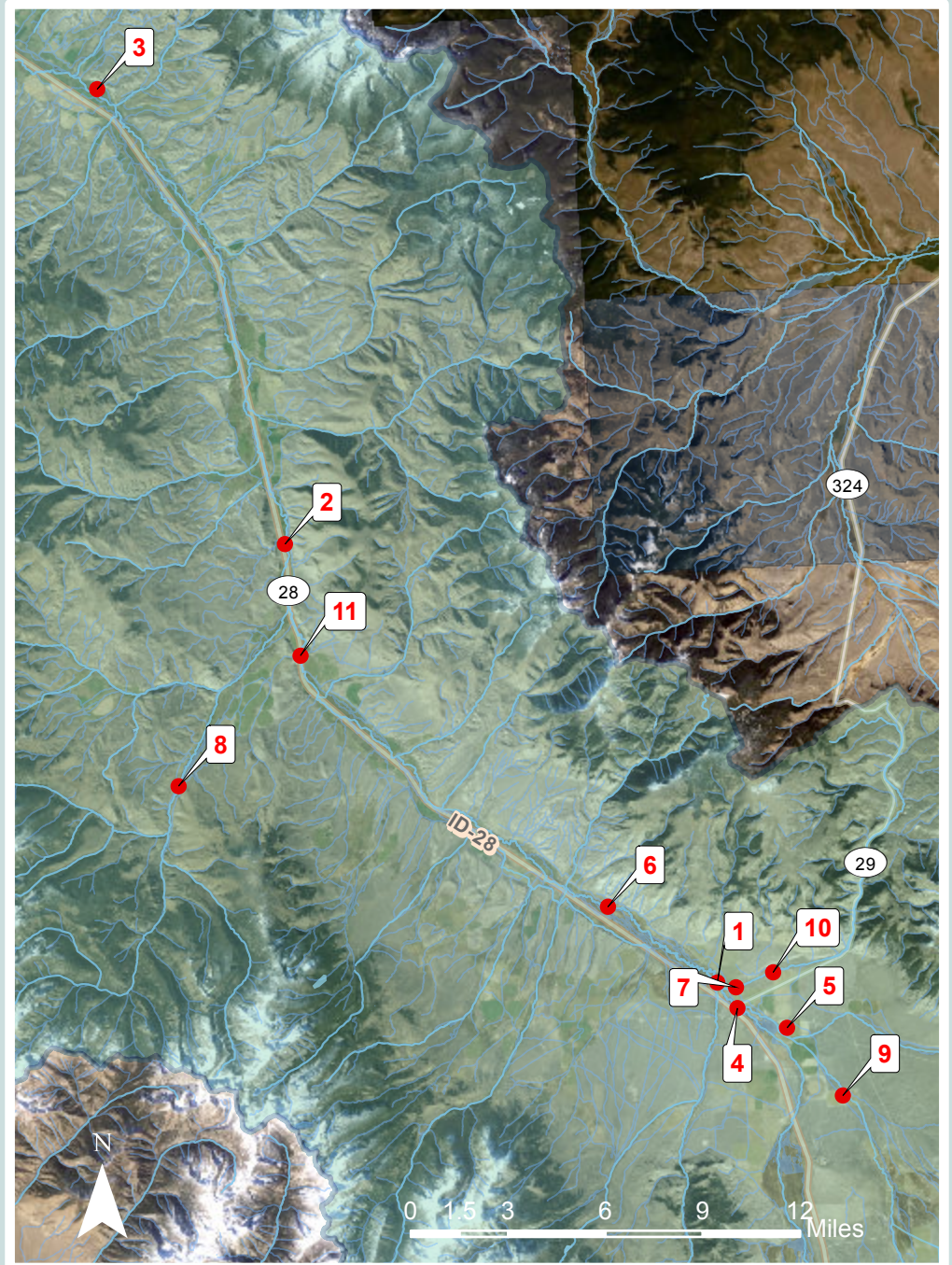


# Lemhi Valley River and Floodplain Restoration Project Sites

- Project Sites
- Lemhi River Basin

1. Lemhi Headwater, a river and floodplain restoration project
2. Narrows Reach, a river and floodplain restoration project
3. Eagle Valley Sub-Reach 1, a river and floodplain restoration project
4. Big Springs II Modification, an irrigation channel modification
5. L-58C, an irrigation diversion relocation
6. L-63, an irrigation diversion modification (to improve fish passage and in-stream habitat)
7. Canyon Creek Confluence, a stream and floodplain restoration project
8. Hayden Creek, a stream and floodplain restoration action
9. Middle Eighteenmile, a stream reconstruction action
10. Canyon Creek Project, an irrigation diversion relocation and stream habitat improvement
11. Little Sawmill Culvert Replacement, a culvert-replacement construction project



Lemhi River Basin

Project Location

