

BPA Situation Report

Safety Update

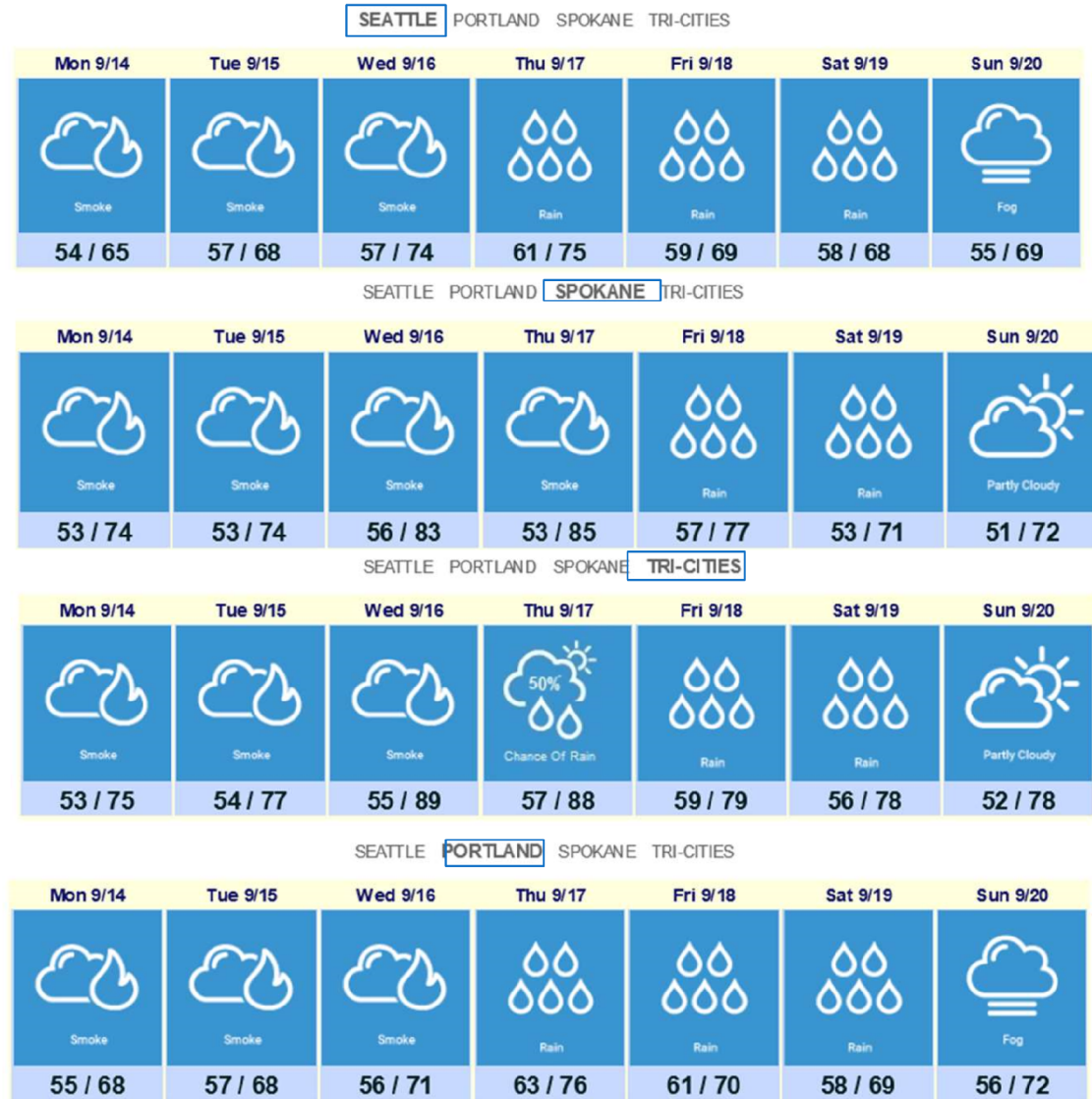
- Ryan Brady



BPA Situation Report

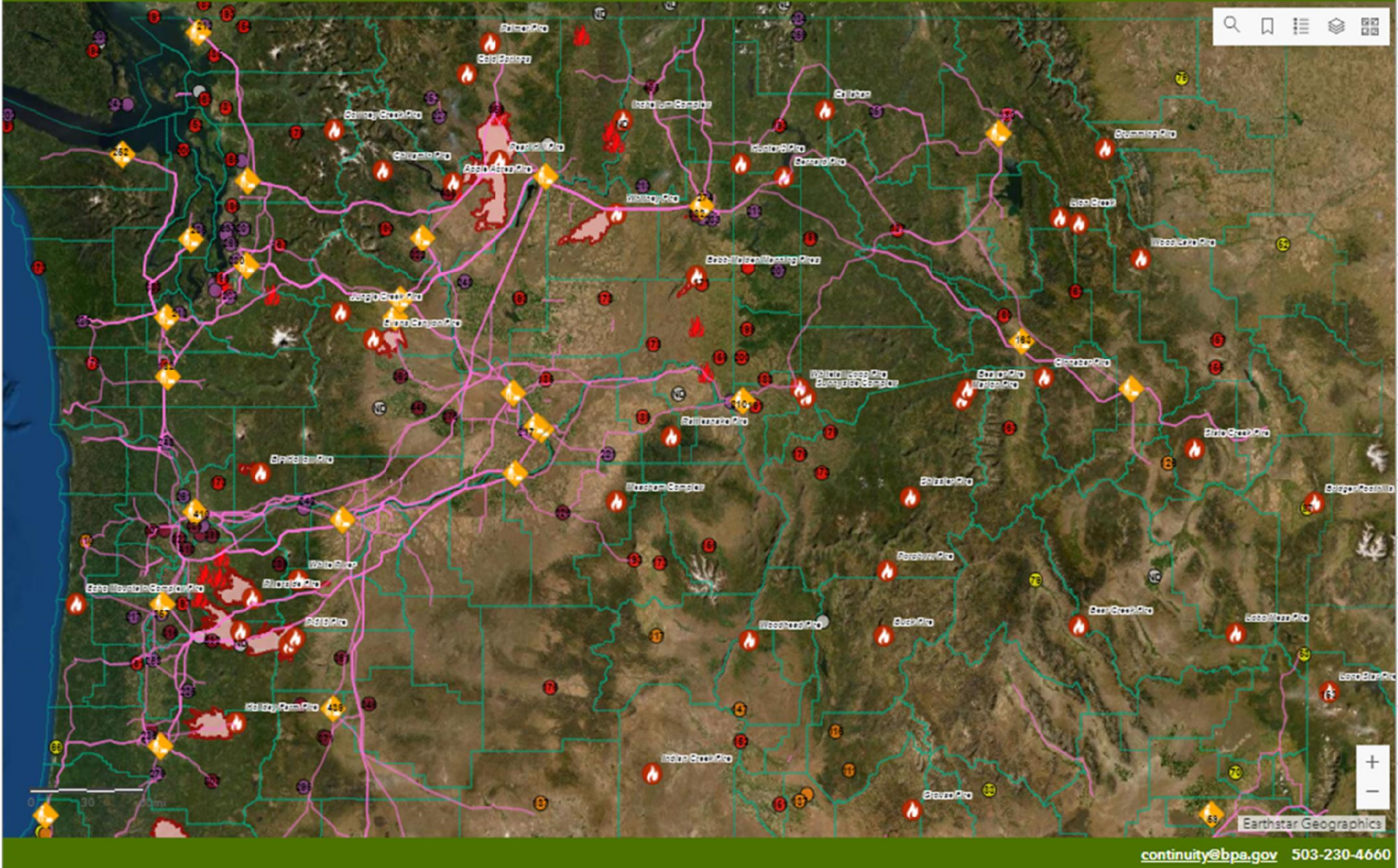
Weather Update

- Weather situation is virtually unchanged from yesterday. Humidity remains high west of the Cascades, and moderate east of the Cascades. Winds remain light.
- We notice from the GACCs that all fires in the region either no longer spreading, or gradually coming under better containment as of this morning.
- The weather will change very little through Thursday: Moderate temperatures, higher humidity, little wind and poor air quality.
- Widespread rain is expected on the west side on Thursday, then spreading east Friday.
- We will continue to monitor the potential for flash flooding near burn scars, which will be a growing concern as the fall rainy season begins within the next 2 weeks.



















BPA Situation Report

 Bonneville Power Administration
Fire Activity Common Operating Picture (COP)



Field Crews

-  Alvey TLM - TFEF
-  Bell TLM - TFSF
-  Chehalis TLM - TFOK
-  Chemawa TLM - TFLF
-  Covington TLM - TFCF
-  Ellensburg TLM - TFWF
-  Grand Coulee TLM - TFWK
-  Idaho Falls TLM - TFIF
-  Kalispell TLM - TFKF
-  North Bend TLM - TFEP
-  Olympia TLM - TFOF
-  Pasco TLM - TFPF
-  Redmond TLM - TFRF
-  Ross TLM - TFKV
-  Snohomish TLM - TFNF
-  The Dalles TLM - TFDF

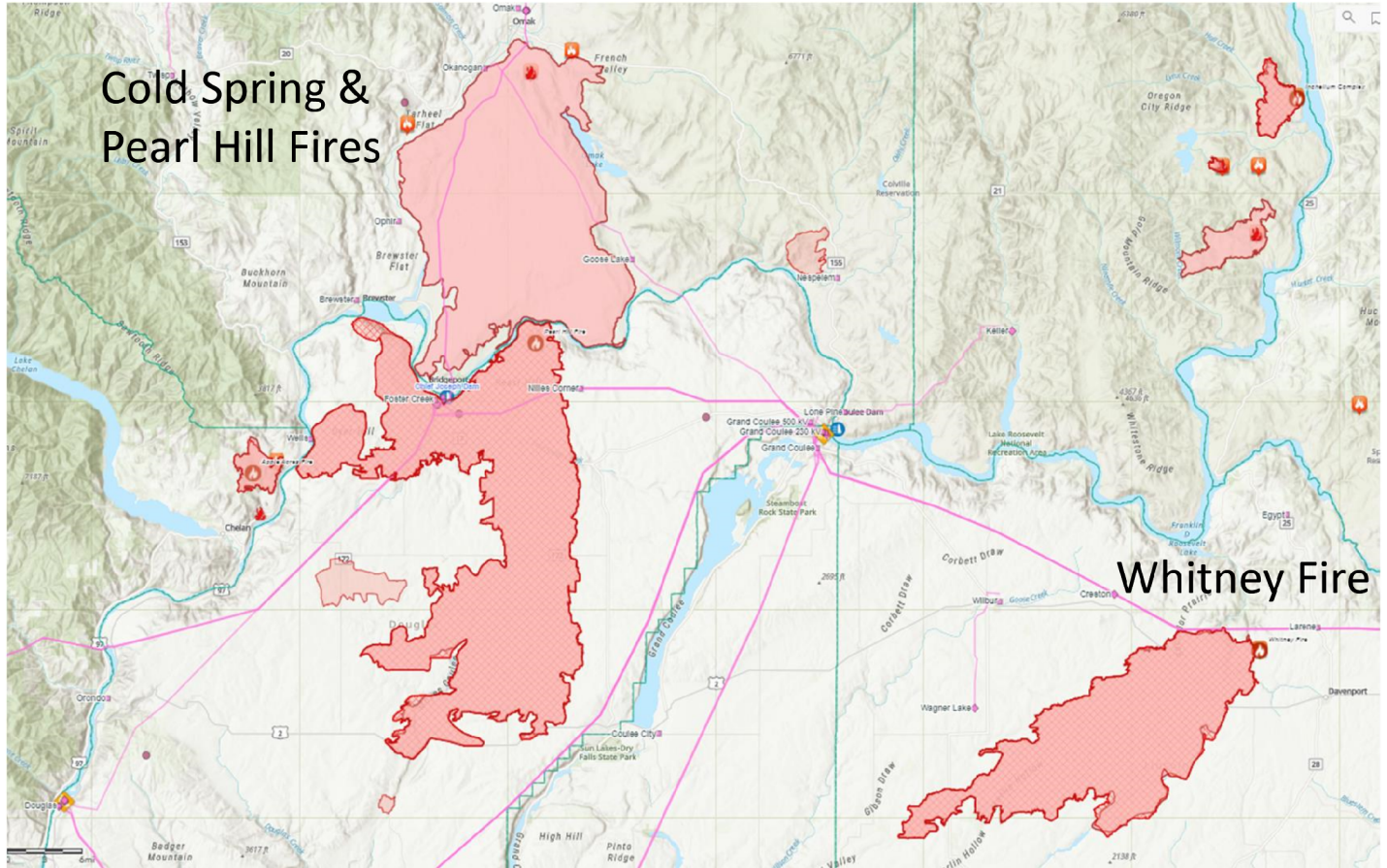
continuity@bpa.gov 503-230-4660

BPA Situation Report

BPA Washington Fires

Cold Spring & Pearl Hill Fires

- Acres Burned: 412,570+
- Counties impacted:
 - Douglas
 - Chelan
 - Okanogan
- Substations
 - Chief Joseph CHJO
 - Okanogan OKAN
 - Nilles Corner NICO
 - East Omak EOMK
 - Brewster BREW
 - Goose Lake GOLK
 - Nespelem NESP



Whitney Fire

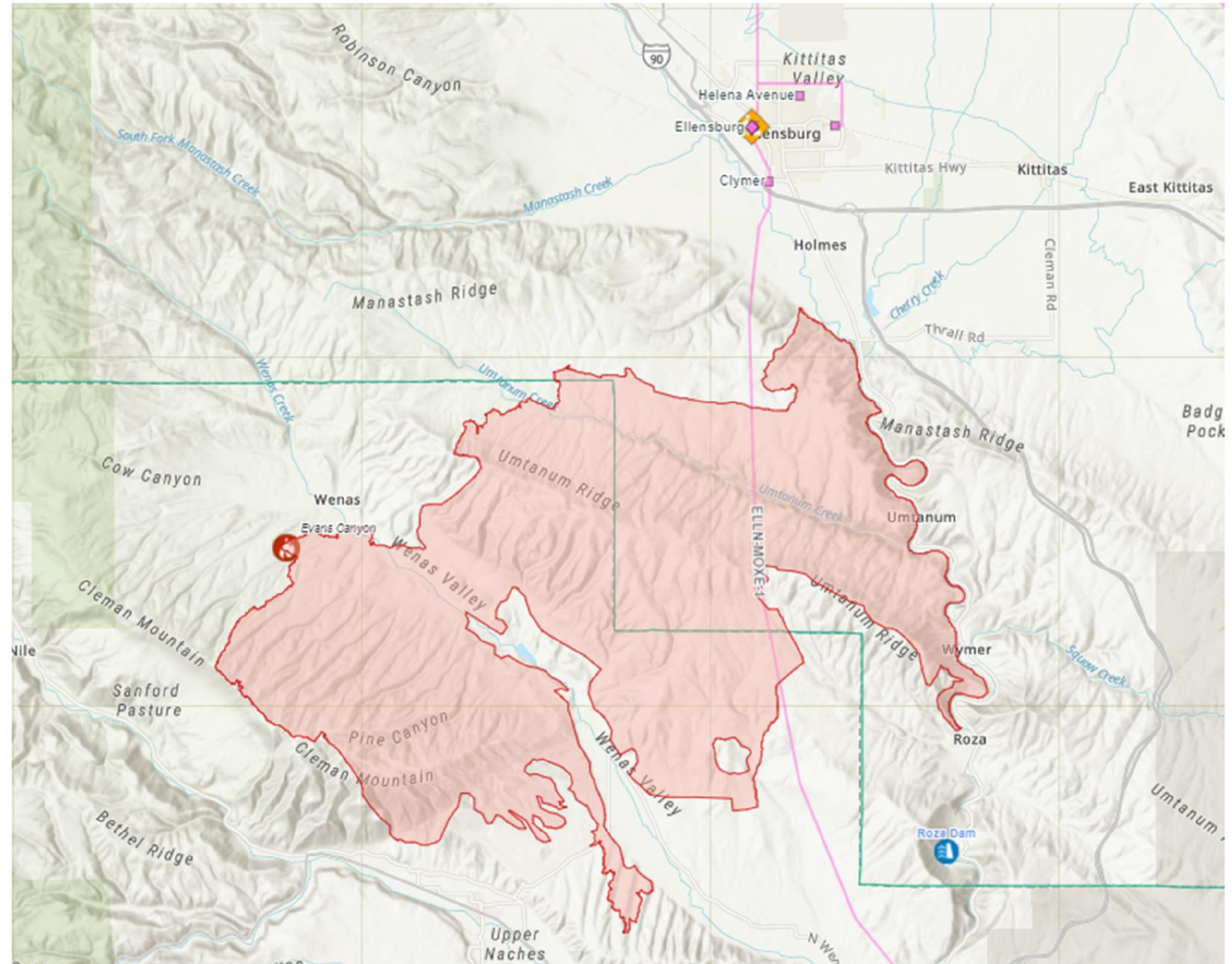
- Acres Burned: 125,196+
- Counties impacted:
 - Lincoln
- Substations
 - Wagner Lake WAGL
 - Creston CRES
 - Larene LREN

BPA Situation Report

BPA Washington Fires

Watching: Evans Canyon Fire

- Acres Burned: 75,795+
- Counties impacted:
 - Kittitas
 - Yakima
- Substations
 - Clymer CLYM
 - Ellensburg ELDO
 - Dolarway DOLR



BPA Situation Report

BPA Oregon Fires

Riverside Fire

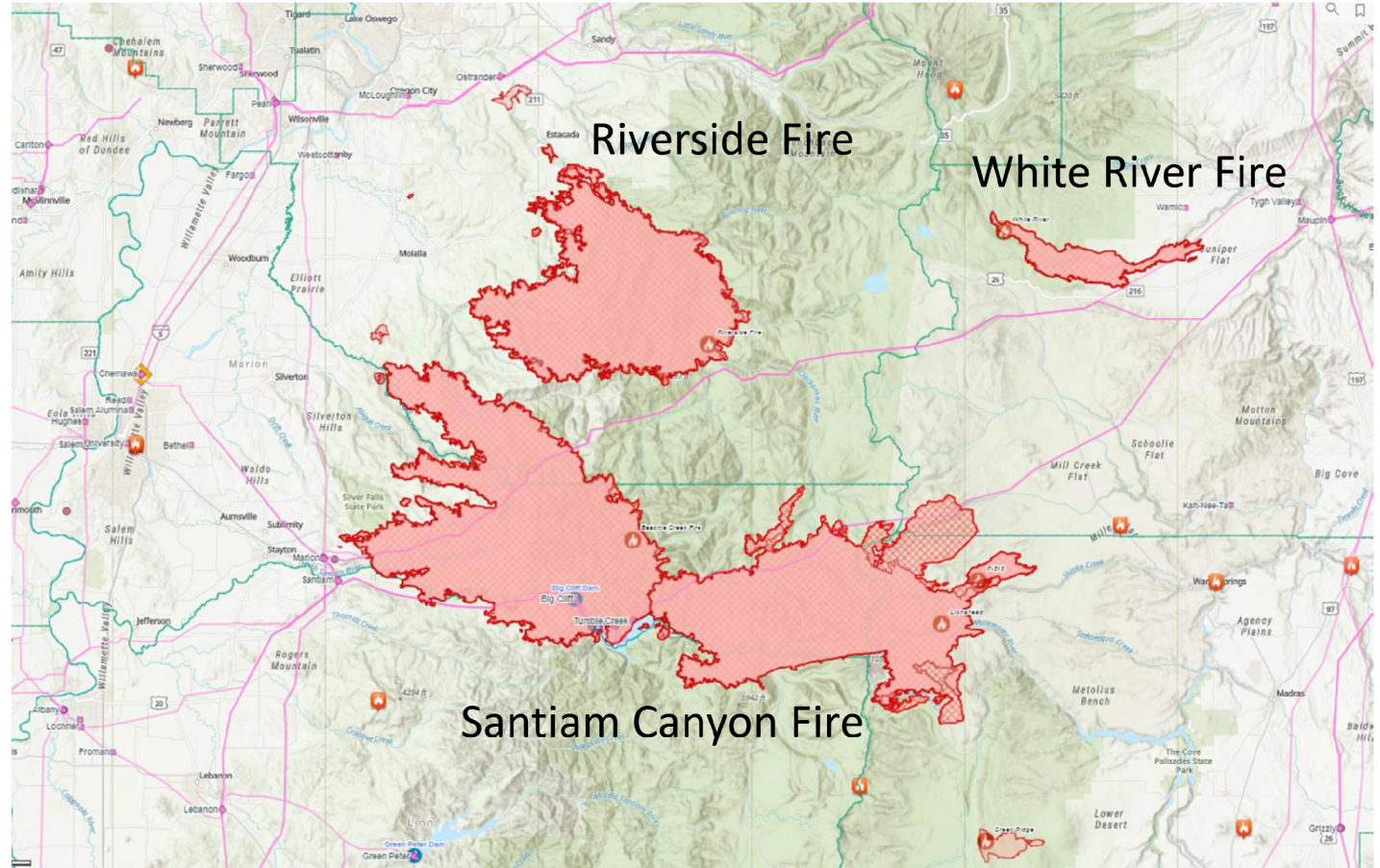
- Acres Burned: 133,508+
- Counties Impacted:
 - Clackamas

White River Fire

- Acres Burned: 17,412+
- Counties Impacted:
 - Wasco

Santiam Canyon Fire

- Acres Burned: 357,106+
- Counties Impacted:
 - Clackamas
 - Marion
 - Linn
- Substations
 - Marion
 - Santiam
 - Detroit DETR
 - Tumble Creek TUMB

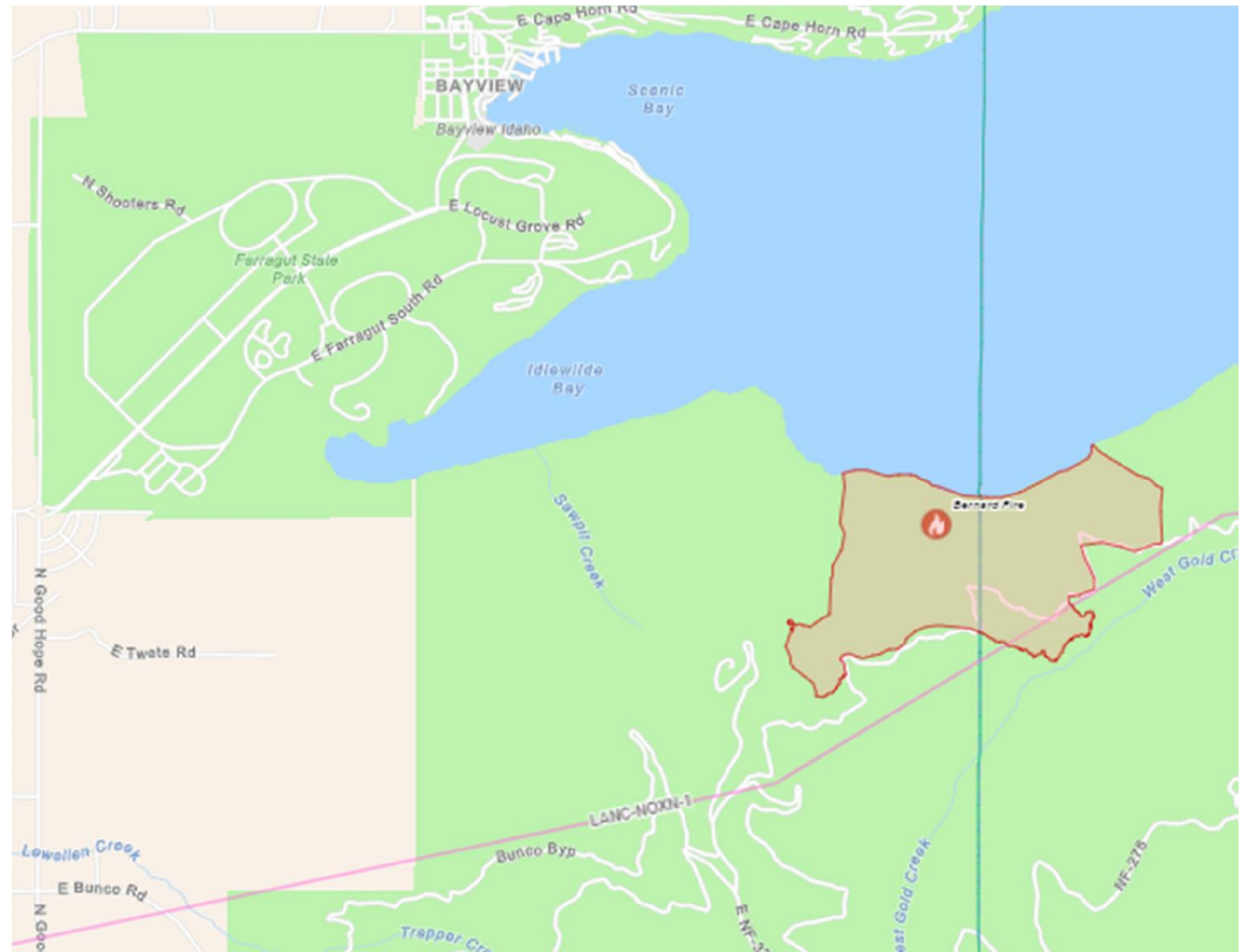


BPA Situation Report

Idaho

Watching: Bernard Fire

- Acres Burned: 876+
- Counties Impacted:
 - Kootenai
 - Bonner
- Line: Lancaster-Noxon No 1 (230 kV)



BPA Situation Report

Idaho

Clover Fire

- Acres Burned: 4,708+
- Counties Impacted:
 - Clearwater
- Substations:
 - Dworshak DWOK

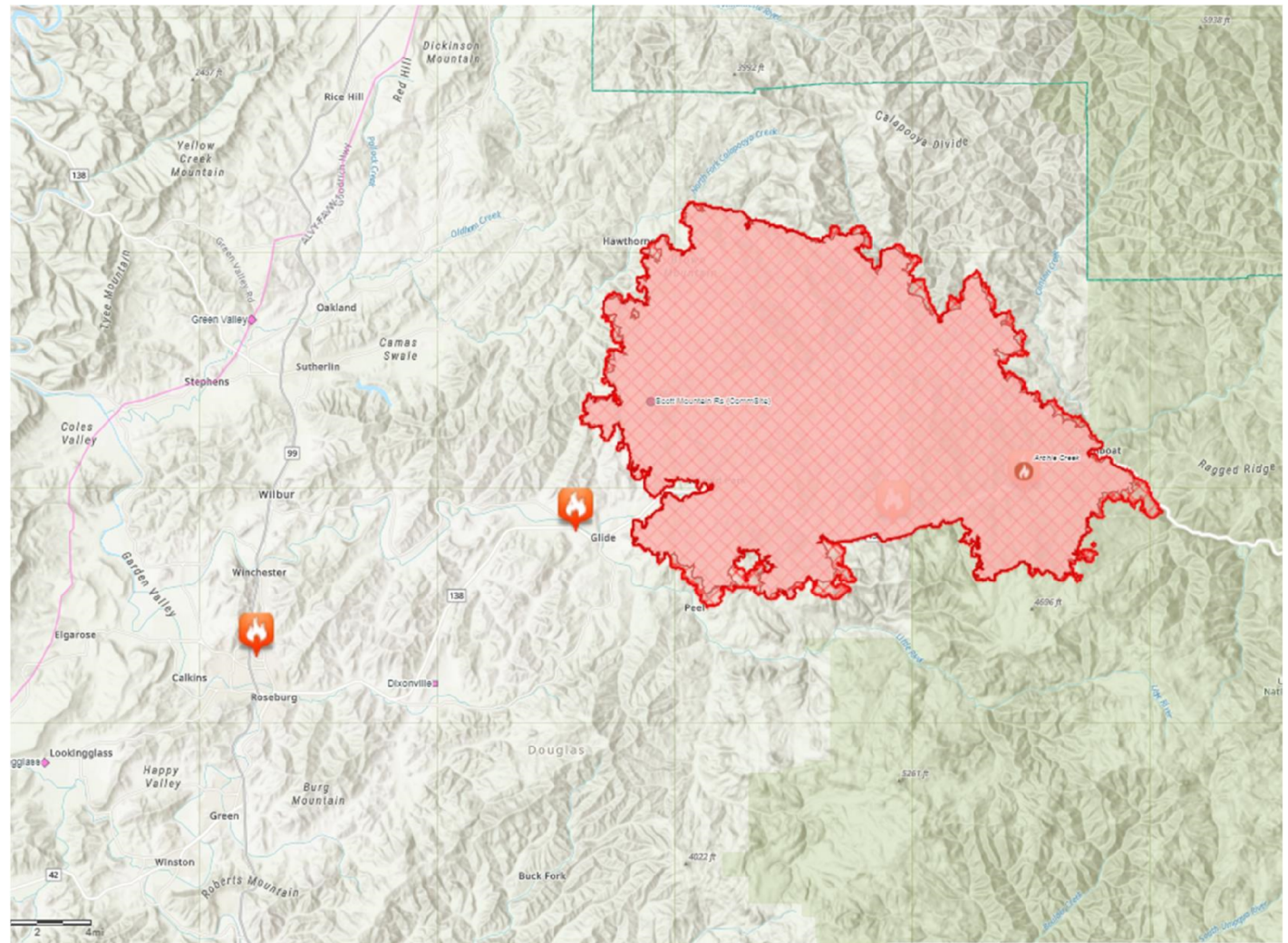


BPA Situation Report

BPA Oregon Fires

Watching: Archie Creek Fire

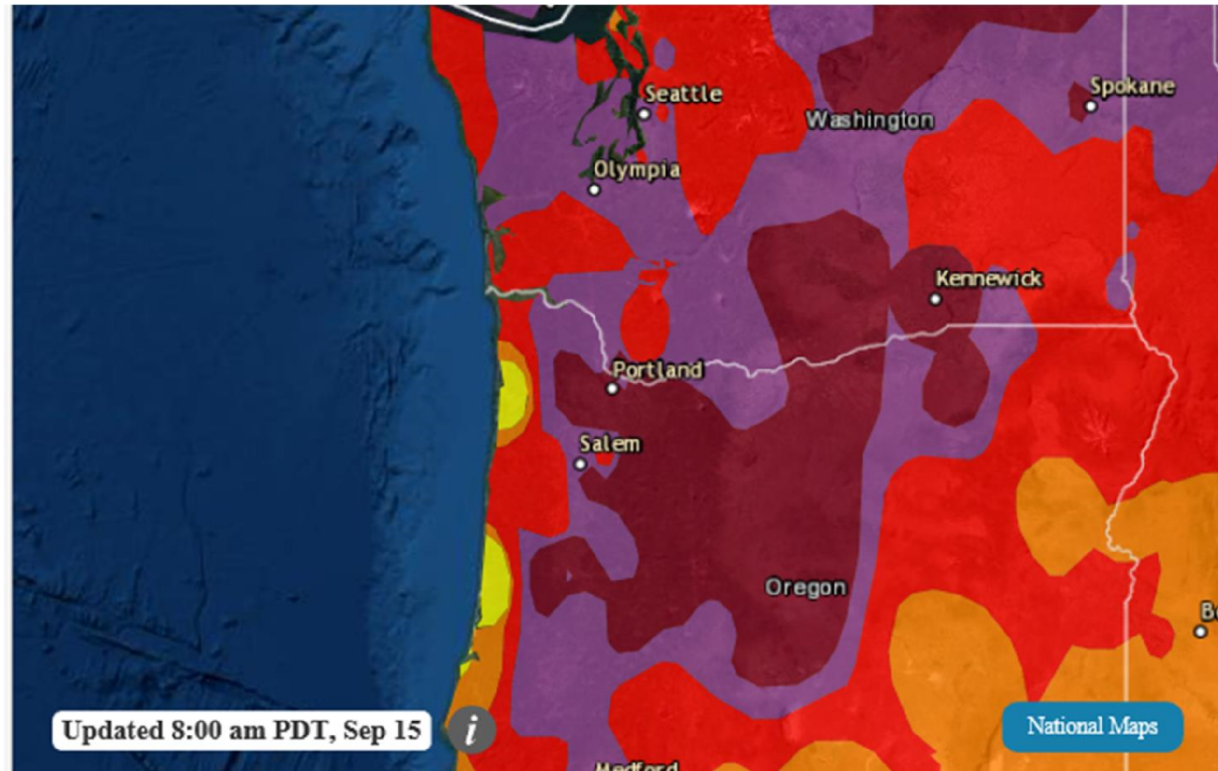
- Acres Burned: 121,475+
- Counties Impacted: Douglas
- Substations
 - Green Valley GRNV



BPA Situation Report

Service Territory Air Quality Report

www.airnow.gov



BPA Situation Report

Oregon Evacuation Zones

Northern Oregon



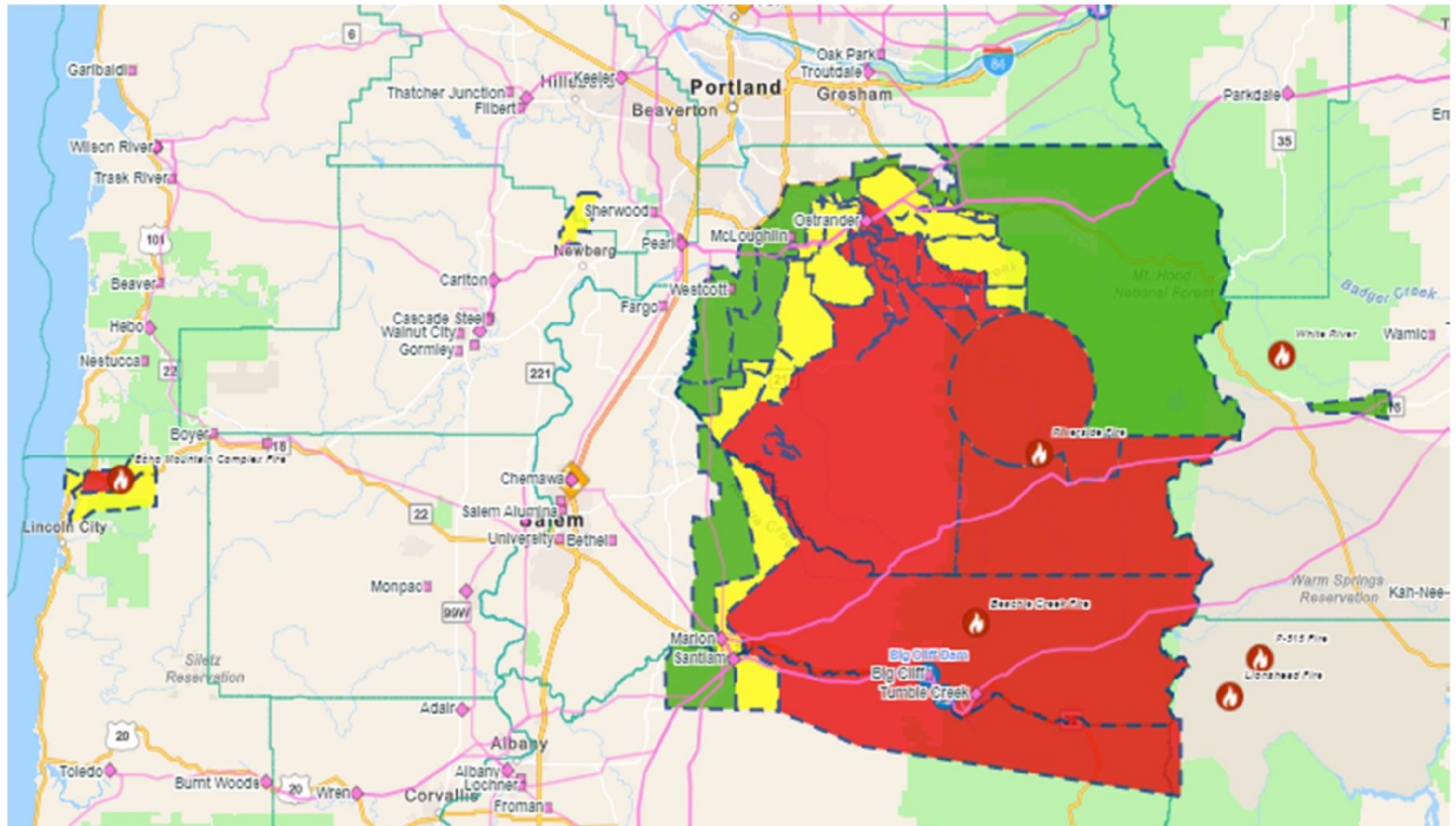
Level 1: BE READY



Level 2: BE SET



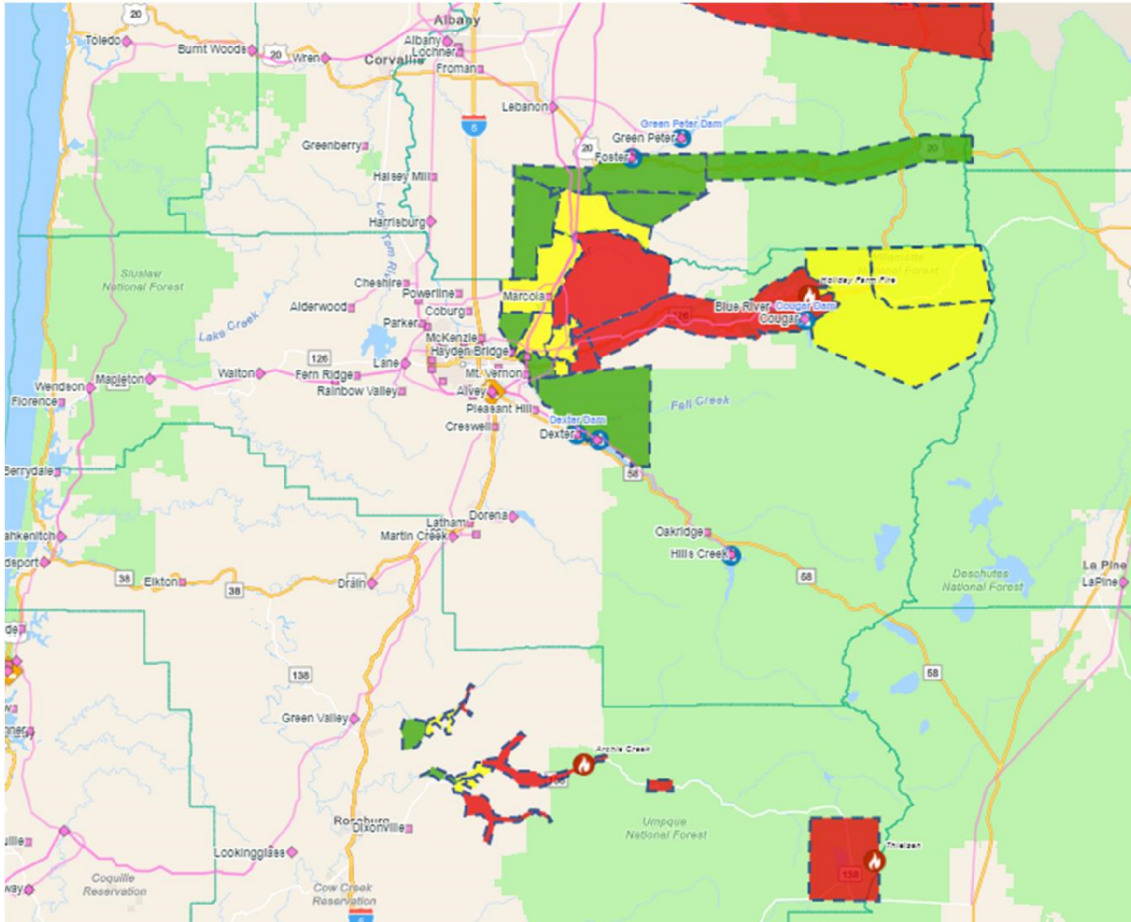
Level 3: GO!



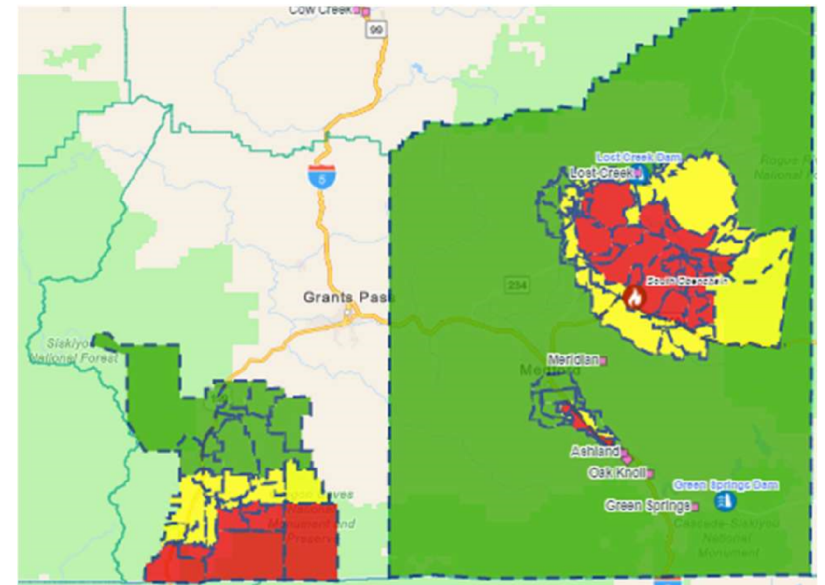
BPA Situation Report

Oregon Evacuation Zones

Central Oregon



Southern Oregon



Level 1: BE READY



Level 2: BE SET



Level 3: GO!

BPA Situation Report

Operations Section Chief Report

- Active fires still burning in the area
- 4 BPA lines or line sections currently OOS that we are responsible to restore.
- 2 BPA line out for proximity work for fire damage restoration
- Access issues keeping crews from completing assessments or repairs:
 - Sections of Cougar – Thurston 115kv
 - A Section of Jones Canyon - Santiam 230kv
- Electrical customers still impacted by BPA restoration:
 - EWEB – ETR TBD – EWEB is not ready to take service
 - Lane Electric – ETR 9-17-20
- Fiber customers still affected by BPA restoration:
 - Noanet – partially restored – full restoration TBD
- Mutual Assistance
 - Continue to asses damage to BPA system to determine the need for or to provide mutual assistance
- Working with Operations and Planning to determine long range strategy

This document may contain SOC-Restricted Information. Under FERC Standards of Conduct, SOC-Restricted Information may not be shared with Marketing Function Employees (MFEs) unless certain criteria have been met (e.g., voluntary consent by the customer, a public OASIS posting, system emergencies, or other exceptions). Please take care to remove or otherwise redact the SOC-Restricted Information before forwarding or otherwise sharing with Marketing Function Employees.

BPA Situation Report

Dispatch Priorities

Salem/Alvey

1. Jones Canyon-Tumble Creek section of Jones Canyon-Santiam #1 230kv line, (may not be able to access for patrols due to active fire)
2. Cougar-Holden Creek #1 115 line.

** The fire threatening Marion substation remains the biggest concern**

Grand Coulee

1. Grand Coulee-Foster Creek #1 115kv line, (restore normal source to CHJ 500kv SS and investigate CHJ SS issues and Nespelem COOP normal source)
2. Grand Coulee-Chief Joseph #1 and #2 230kv lines
3. Goose Lake-Okanogan section of Grand Coulee-Okanogan #2 115kv line

Buckley remains on engine generators for Station Service power (SS is fed from Jones Canyon-Santiam #1 230kv line) . Fuel needs have been addressed

BPA Situation Report

POD Outages as of 08:00

- Cougar – Holden Creek (some TOP, some ours)
 - Forces out Cougar PH and **Carmen Smith generation (EWEB)**.
 - Blue River POD for **Lane Electric** is OOS on this line
- Nilles Corner- Chicken Creek Section Grand Coulee – Foster Creek No 1 115 kV line
 - Normal source to POD still out.
 - Nespelem POD Restored from Douglas. Customer restored.
 - Chief Joe SS other trouble.
- Jones Canyon – Santiam #1 230 KV line
 - Tumble Creek-Santiam section restored
 - Forces out Buckley Station Service
 - Wind Generation restricted to 50% name plate.
- Brewster – Foster Creek (TOP line for Okanogan, not a BPA line)
 - North Bar POD (Douglas Co.) OOS 0345 9/8 (not a BPA Customer)
 - Just listed here as they loop through our system
 - Still out. Eta unknown. 9/11 @ 1115 restored up to Foster Creek.

BPA Situation Report

South Region Activities

- **Salem:** *Santiam Fire (Riverside Fire may merge with Santiam fire)*
 - **Jones Canyon-Tumble Creek section of Jones Canyon-Santiam#1 230kV:**
 - Active fires impeding patrol, reevaluating daily
 - **Marion Sub:**
 - Normal operations
 - Preventive fire watch on site
 - Daily evaluation with fire IMT on risk to Marion
- **Eugene:** *Holiday Farm Fire*
 - **Cougar-Holden Creek #1 115kV:** Cougar Powerhouse-Blue River Tap (6 miles)
 - TLM crews working with tree cutting crews to restore Cougar-Blue River Tap
 - Working with stakeholders to restore POD at Blue River Tap for Lane Electric on 9-17-20

BPA Situation Report

North Region Activities

- **Grand Coulee**

- Making progress on the restoration activities on GCOU – CHJO #1 230kv
 - ETR – 9-17-20
- Completed restoration on the GCOU – FOST #1 115kv
 - Leaving OOS for proximity work
- Completed restoration on the GCOU – CHJO #2 230kv
 - Leaving OOS for proximity work
- Continue restoration on GCOU – OKAN #2 115kv
 - ETR – TBD
- Working with the customer on the final fiber break on the CHJO – SCLR
 - Customer fiber only - NOANET
 - ETR – 9-18-20

BPA Situation Report

Logistics & Planning

- **Logistics**

- AMS continues to standby at Columbia and Midway sub pending final restoration of the fiber. ETR – 9-18-20
- Cell Boosters approved and purchased
- Material and equipment needs being met
- Communication issues being mitigated

- **Planning**

- Assessment of work priorities based on TOT load studies
- Sequencing of crew days off to maintain rest day for all workers not to exceed 14 days
- IMT hours tracking
- Contingency plans for resources

BPA Situation Report

Media Analysis

WASHINGTON FIRES

- **Cold Spring Fire**
 - No new news.
- **Pearl Fire**
 - No new news.

OREGON FIRES

- **Riverside Fire**
 - No new news.
- **White River Fire**
 - No new news.
- **Santiam Canyon Fire**
 - No new news.
- **Holiday Farm Fire**
 - No new news.

GENERAL WILDFIRE STORIES OF INTEREST

- No New News.

BPA Situation Report

Media Analysis Cont.

MEDIA INQUIRIES AND RESPONSES

- **Wall Street Journal**
 - PIO conducted an interview with WSJ reporter Rebecca Smith on 9/14/20. Most of our conversation revolved around the outage report available through BPA.gov on the Transmission section of the website and two outages listed below.
 - Ms. Smith's focus was mostly on two BPA lines listed on the report: The on the Sept. 8 Slatt to Ashe Marion 500 kV 500 kV line outage and the Sept. 7 Santiam: 69 kV CPI Feeder Line #1 outage. PIO explained the circumstances surrounding both outages and provided general information about BPA's wildfire response consistent with the approved statement and talking points. We worked with Dispatch personnel assigned to the IMT to provide details about the Slatt to Ashe – Marion 500 kV line. We confirmed that BPA does not own the 69 kV CPI Feeder Line #1.
- **Salem Statesman Journal**
 - PIO spoke with Statesman Journal reporter Claire Withycombe, who asked if BPA has voluntarily removed any of its lines out of service in the Santiam Canyon area last week. We responded BPA did not. We also provided Withycombe John Hairston's statement and told her at this time we have no evidence that any BPA equipment was associated with ignition of any of the wildfires burning in the area.
 - *As the fires recede and become more contained, PIO expects the media to start to focus on the origins the fires and potential power line involvement in ignition or spread. If you receive a call from the media, please refer that call to pio@bpa.gov. If it is after hours, call Doug Johnson at 503-713-7658*

BPA Situation Report

Additional Report Outs

- Liaison Officer (Inter. Gov. Affairs) – Dan James
- Liaison Officer - Marybeth O’Leary
- Customer Liaison – Tina Ko

Full Summary of Outages:

0800 9/12/20

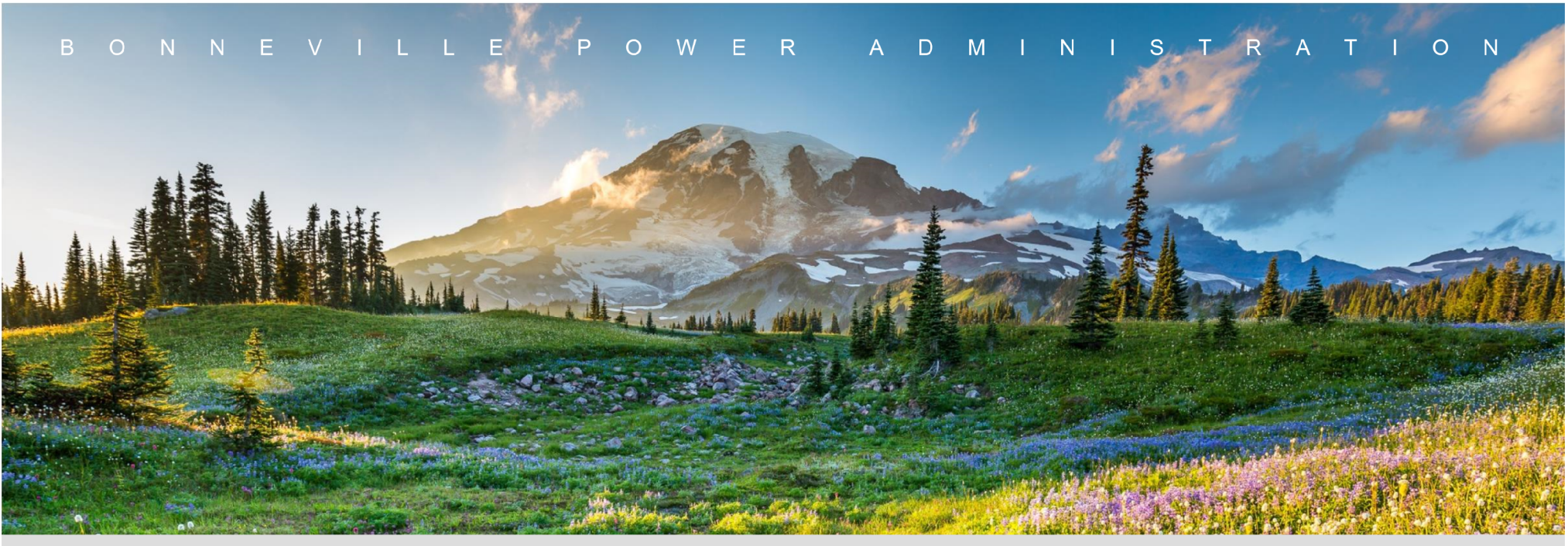
This document may contain SOC-Restricted Information. Under FERC Standards of Conduct, SOC-Restricted Information may not be shared with Marketing Function Employees (MFEs) unless certain criteria have been met (e.g., voluntary consent by the customer, a public OASIS posting, system emergencies, or other exceptions). Please take care to remove or otherwise redact the SOC-Restricted Information before forwarding or otherwise sharing with Marketing Function Employees.

1. Grand Coulee – Chief Joseph #2 230 KV Line
 - a. Out of service 0727 9/7
 - b. Reason out of service: 11 structures down
 - c. Points of Delivery out – no points on this line
 - d. Does it cause any ill effects on system? – fiber optic repairs needed asap
 - e. Priority for restoration - fiber is considered #1 priority
 - f. Plan for restoration – crews will start today, only poles needed to string fiber, fiber to stay in travelers so it can be lit up ASAP
 - g. Fiber splice to begin tomorrow 9/12
2. Grand Coulee – Chief Joseph #1 230kV line
 - a. Out of service 0727 9/7
 - b. Reason out of service: Lines down
 - c. Points of Delivery out – no points on this line
 - d. Does it cause any ill effects on system? - no
 - e. Priority for restoration- Lowest priority in region
 - f. Plan for restoration – TBD
3. Grand Coulee – Foster Creek No 1 115 kV line
 - a. Chicken Creek – Foster Creek – Nilles Corner
 - b. Lines down- Multiple structures down between Nilles and Foster Creek
 - c. Chicken Creek POD – energized from East Omak
 - d. Nespelem POD – energized from Douglas
 - i. Chief Joe SS is fed from here
 - e. Priority #2 job for north crews is Chief Joe SS
 - f. 9/11 Foster Creek restored from Douglas Foster Creek (Wells) at 11:15
4. Grand Coulee – Okanogan #2 115kV line
 - a. Goose Lake – Okanogan section OOS
 - b. Lines down?
 - c. No Points of Delivery (POD) out of service
 - d. Priority is below fiber and below chief jo SS and Nespelem
5. Brewster – Foster Creek (TOP line)
 - a. North Bar POD OOS 0345 9/8
 - b. Just listed here as they loop through our system
 - c. Still out eta is Days. 9/11 @ 1115 restored up to Foster Creek.
6. Okanogan PUD Okanogan to Ophir is OOS (feeds into Brewster)
7. Marion sub

- a. Fire protection of substation
 - b. All 500 lines in service but corridor continues to be threatened
 - c. Loss of multiple 500 lines will result in load shedding in Oregon
8. Jones Canyon – Santiam #1 230 KV line
- a. Out of Service 0536 9/8
 - b. Patrolled on ground from Santiam to Tumble Creek and looks OK – fire beyond tumble creek – and extensive damage around the line – hoping to fly again tomorrow
 - c. Tumble Creek-Santiam section restored CPI has not picked up load yet
 - d. Hall Mt. Radio station is presumed destroyed by fire
 - e. Forces out Buckley Station Service
 - f. Forces out/limits multiple wind generation
 - g. Getting this line in service is high priority but it needs to be patrolled beyond Tumble Creek
9. Cougar – Holden Creek / Holden Creek-Thurston 115kv (some TOP, some ours)
- a. Forces out Cougar PH, Trailbridge and Carmen Smith generation
 - b. Blue River POD for Lane electric is OOS on this line
 - c. EWEB line and they have reported a tree in it
 - d. Pictures and damage report from helo available was flown from Cougar to Blue River – hope to fly Blue River down to Holden Creek tomorrow
 - e. 9/11 Crew working from Cougar to Blue River. That section is 4 days. To Holden?
10. Tillamook – Astoria No 1 115 KV Line
- a. Our terminal still OOS, PACW trouble to Garibaldi
 - b. All POD's are energized
 - c. PACW picked up a terminal clearance today to work on it
 - d. 9/11 PACW estimate is 9/18.
11. Reedsport – Fairview – there was a fire today under 8/5 that is now extinguished but inspection will be necessary
12. Radio sites on Engine Generators (EG)
- a. Lowell Butte (Lane Elec) 0116 9/8
 - b. Thunder Ridge (Rocky Mountain Power) 0106 9/8
 - c. Hall Ridge (has solar) – Presumed Destroyed by fire.
 - d. Scott Mountain
 - i. Fed from Douglas – they report burned up junction box and underground feeder – fire still in area 9/9/PM
13. Substations without Primary Station Service (SS)
- a. Buckley on EG – district has refueling plan – comes from Jones Canyon - Santiam
14. PGE issues
- a. Bethel – Round Butte OOS 2114 9/7 - this has effect on load dropping plans
15. For Reference – not associated with storm – Schultz Raver 3 and 4 lines get removed from service nightly for voltage control
16. Points of Delivery Summary list
- a. Carmen PH EWEB feeder 1 (on Cougar line)
 - b. Blue river Lane Electric feeder 1 (on Cougar line)

Restored:

1. None last night



BPA Situation Brief

September 12, 2020

Fire IMT Meeting 10:00 AM



BPA Situation Report

Safety

- **Summit Fever** -“Summit fever” is a mountaineering term that describes the drive or compulsion of a climber to reach the summit of a mountain no matter what the cost. The climber has invested time, energy and resources into their goal, and by the time they have the summit of the mountain in their sight, they are so close to accomplishing the feat that they allow their judgment to be impaired. They make choices toward the top of the mountain that they almost certainly would not have made earlier.
- Almost everyone is influenced by the need to finish a task, a compulsion that can lead to risk-taking and dangerous or even deadly results.
- Be aware of the impact that summit fever may have on your decision-making as you are trying to restore an outage, complete an overhaul or finish any long, difficult job. Recognize that the clear head you had earlier in the process may now be compromised by your fatigue or desire to get the job done.
- <https://incident-prevention.com/ip-articles/recognizing-summit-fever-in-the-utility-industry> .

BPA Situation Report

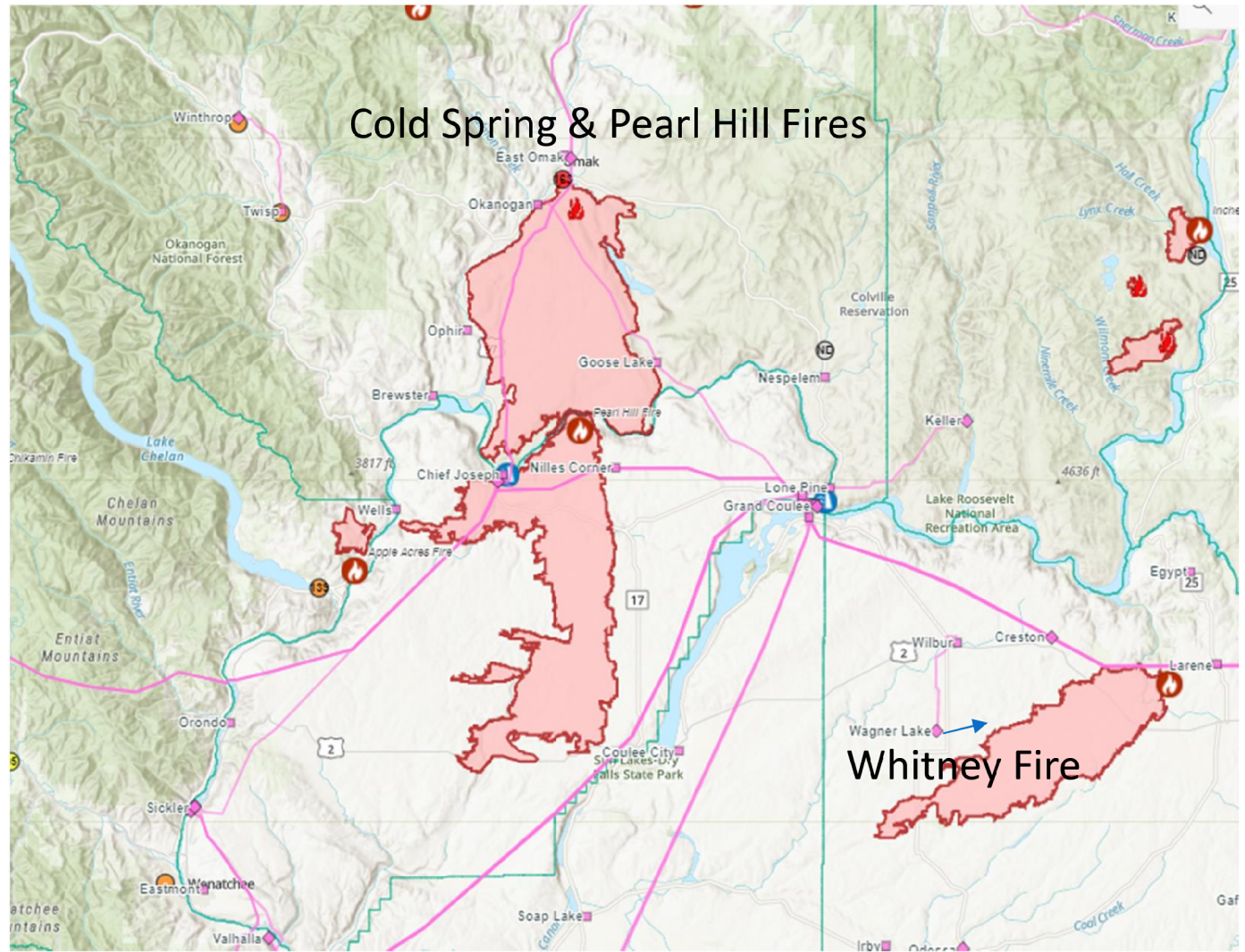
BPA Washington Fires

Cold Spring & Pearl Hill Fires

- Acres Burned: 407,654+
- Counties impacted:
 - Douglas
 - Chelan
 - Okanogan
- Substations
 - Chief Joseph CHJO
 - Okanogan OKAN
 - Nilles Corner NICO

Whitney Fire

- Acres Burned: 123,687+
- Counties impacted:
 - Lincoln
- Substations
 - Wagner Lake WAGL
 - Creston CRES



BPA Situation Report

BPA Oregon Fires

Riverside Fire

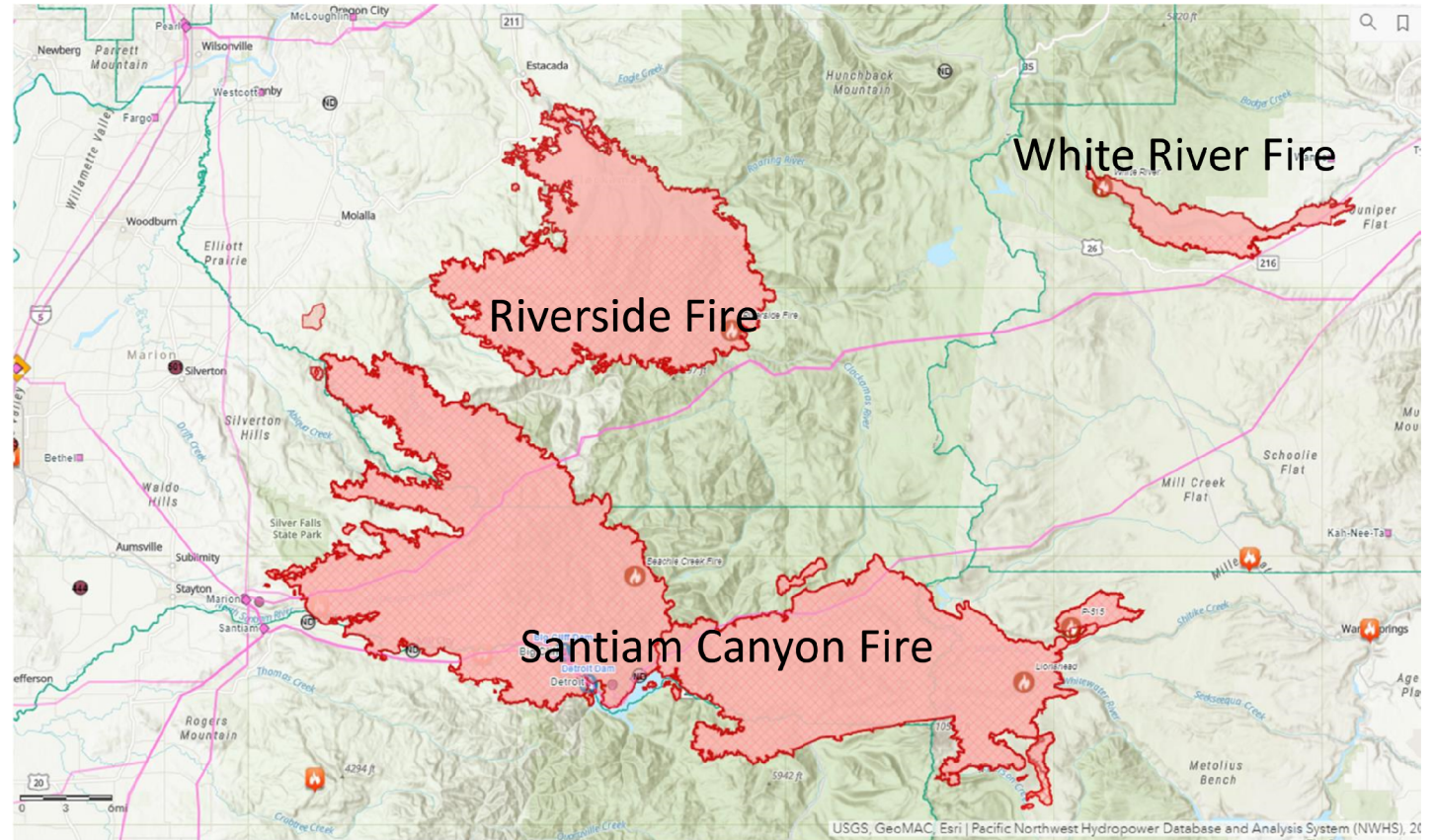
- Acres Burned: 130,052+
- Counties Impacted:
 - Clackamas

White River Fire

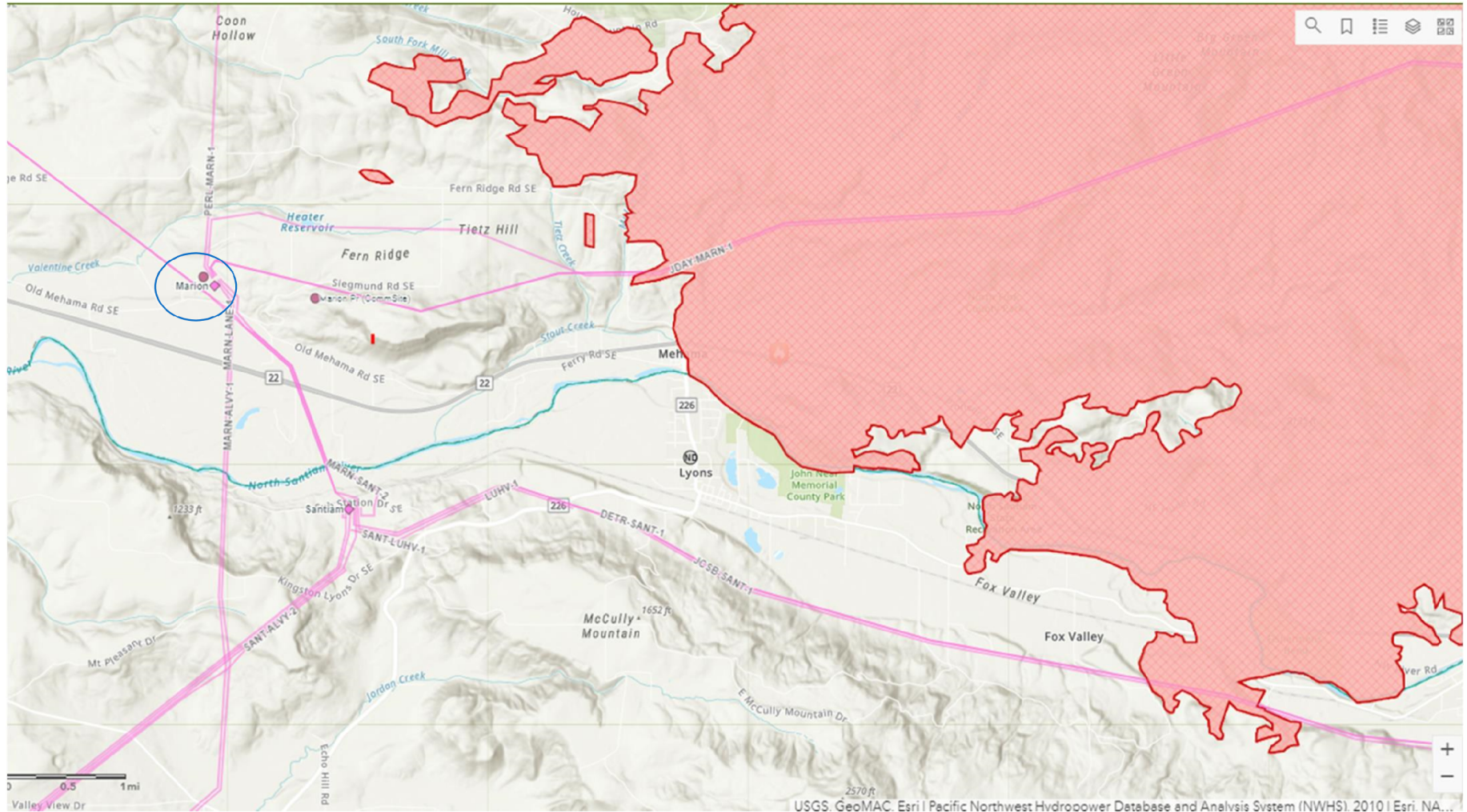
- Acres Burned: 17,412+
- Counties Impacted:
 - Wasco

Santiam Canyon Fire

- Acres Burned: 324,286+
- Counties Impacted:
 - Clackamas
 - Marion
 - Linn
- Substations
 - Marion
 - Santiam
 - Detroit DETR
 - Tumble Creek TUMB



Marion Substation

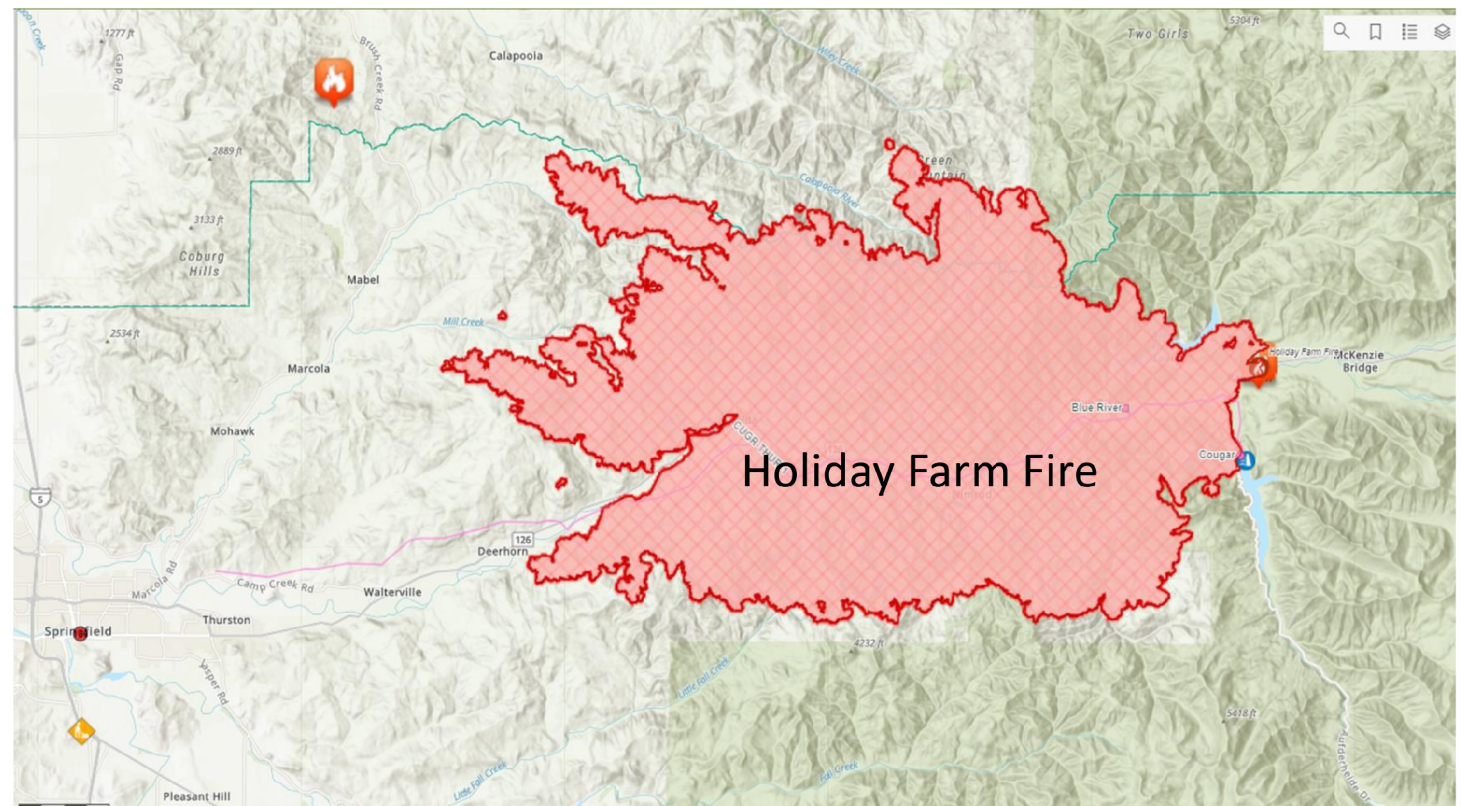


BPA Situation Report

BPA Oregon Fires

Holiday Farm Fire

- Acres Burned:
156,781.33+
- Counties Impacted:
Lane
- Linn
- Substations
 - Cougar CUGR
 - Blue River BLRI
 - Marcola MRCL
 - Thurston THUR



BPA Situation Report

Oregon Evacuation Zones



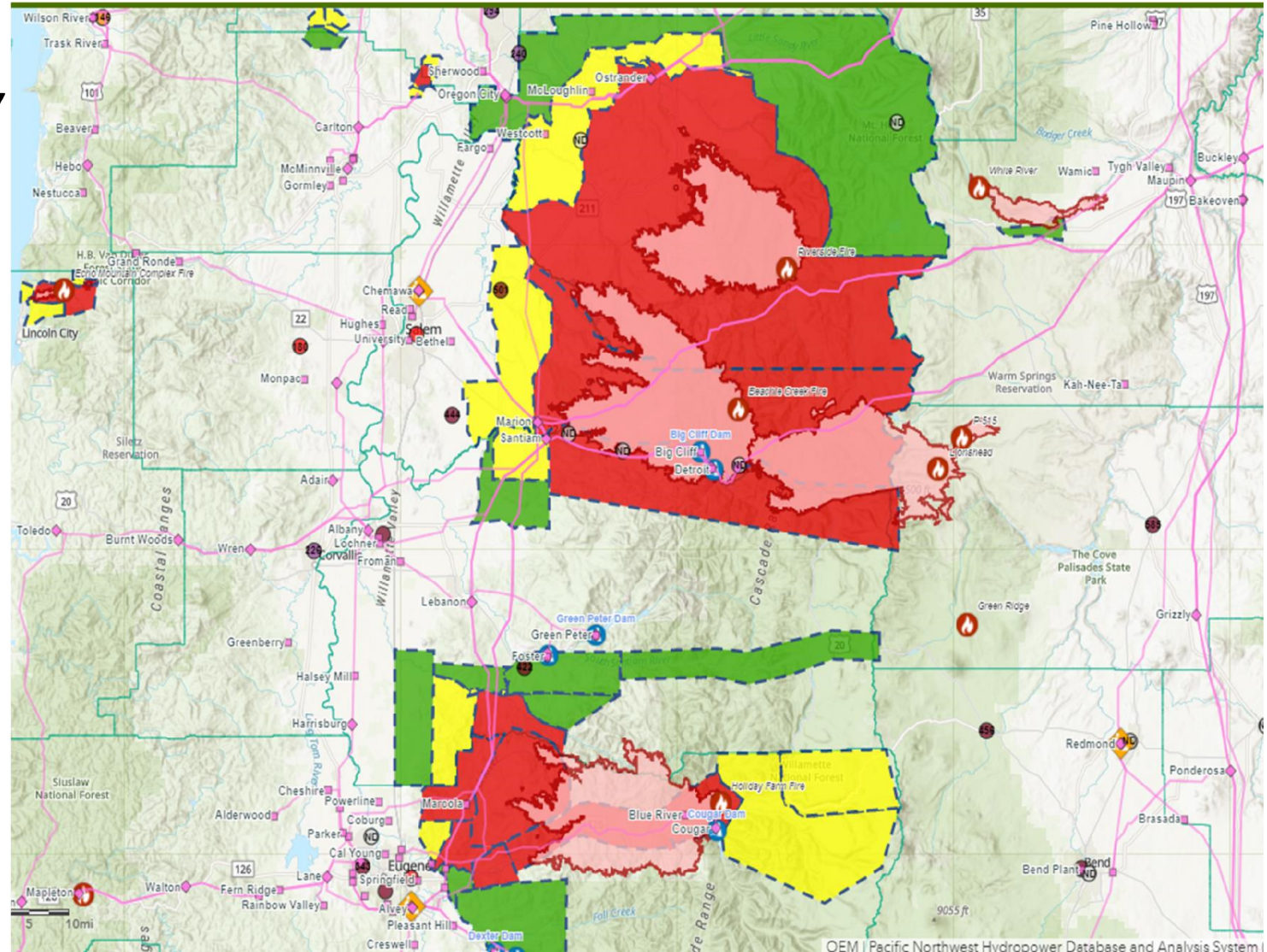
Level 1: BE READY



Level 2: BE SET



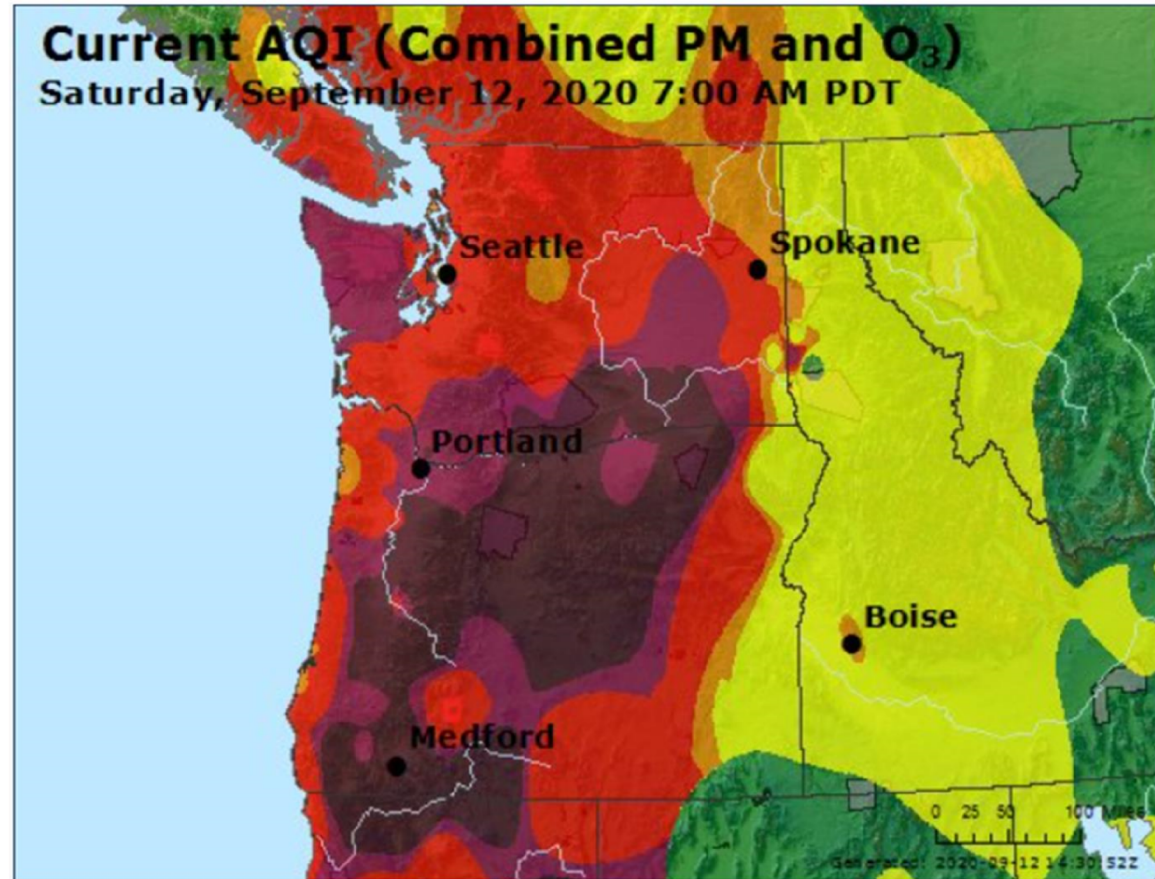
Level 3: GO!



BPA Situation Report

Service Territory Air Quality Report

www.airnow.gov



■ National Parks/Monuments ■ Tribal Boundaries
The tribal boundaries shown here are provided by the Bureau of Indian Affairs and are intended to be used as a general spatial reference only. They are not a formal determination of tribal boundaries by the EPA.



BPA Situation Report

Operations Section Chief Report

- 7 Districts have suffered some sort of damage.
- We currently have crews working this event.
- We have put back in service 13 different lines or line sections:
 - 6 – 115kv lines
 - 4 – 230kv lines
 - 3 – 500kv lines
- Currently out of service:
 - Fiber optic line
 - 6 lines
 - 1 substation on EG
- Communication sites affected:
 - 9 sites on EG as of 0900 9-12-2020
 - 1 site down
- Active fires still burning keeping crews from completing assessments or repairs.

This document may contain SOC-Restricted Information. Under FERC Standards of Conduct, SOC-Restricted Information may not be shared with Marketing Function Employees (MFEs) unless certain criteria have been met (e.g., voluntary consent by the customer, a public OASIS posting, system emergencies, or other exceptions). Please take care to remove or otherwise redact the SOC-Restricted Information before forwarding or otherwise sharing with Marketing Function Employees.

BPA Situation Report

North Region Activities

- Stefan Schildt, North Branch Director
 - Line crews working on fiber and restoration of the line
 - Fiber is currently being spliced with ETR of 9-12-2020
 - Upon completion of fiber:
 - Crews will be split to facilitate restoration on next high priority lines.

BPA Situation Report

South Region Activities

- Rob Robertsen, South Branch Director
- **Salem:** *Santiam Fire (Riverside Fire is close)*
 - **Jones Canyon-Tumble Creek section of Jones Canyon-Santiam#1 230kV:**
 - Active fires impeding patrol, reevaluate as conditions change
- **Marion Sub:**
 - No change, fire watches on site
- **Eugene:** *Holiday Farm Fire*
 - **Cougar-Holden Creek #1 115kV:** Cougar Powerhouse-Blue River Tap (6 miles)
 - Active fires impeding patrol, progress has been made
 - Alvey TLM working with tree cutting crews
 - Working with stakeholders to restore POD at Blue River Tap for Lane Electric

BPA Situation Report

Fiber Activities

- Fred Bryant, Fiber Branch Director



Fiber Updates

- Investigation of Customer report second break between CHJO (chief Jo) and SCLR (sickler) and third fiber break between SHUL (Shultz) and SCLR (Sickler).
- Mobilization of crews to man sites we have lost communications
- Restore the Fiber ring associated with Grand Coulee-Chief Joe #2 Fiber splicing on going today.
- Prepare and staff Marion Substation fire defenses 24/7
- Assess damage on Cougar- Holden Creek, restore power for firefighters if requested.

BPA Situation Report

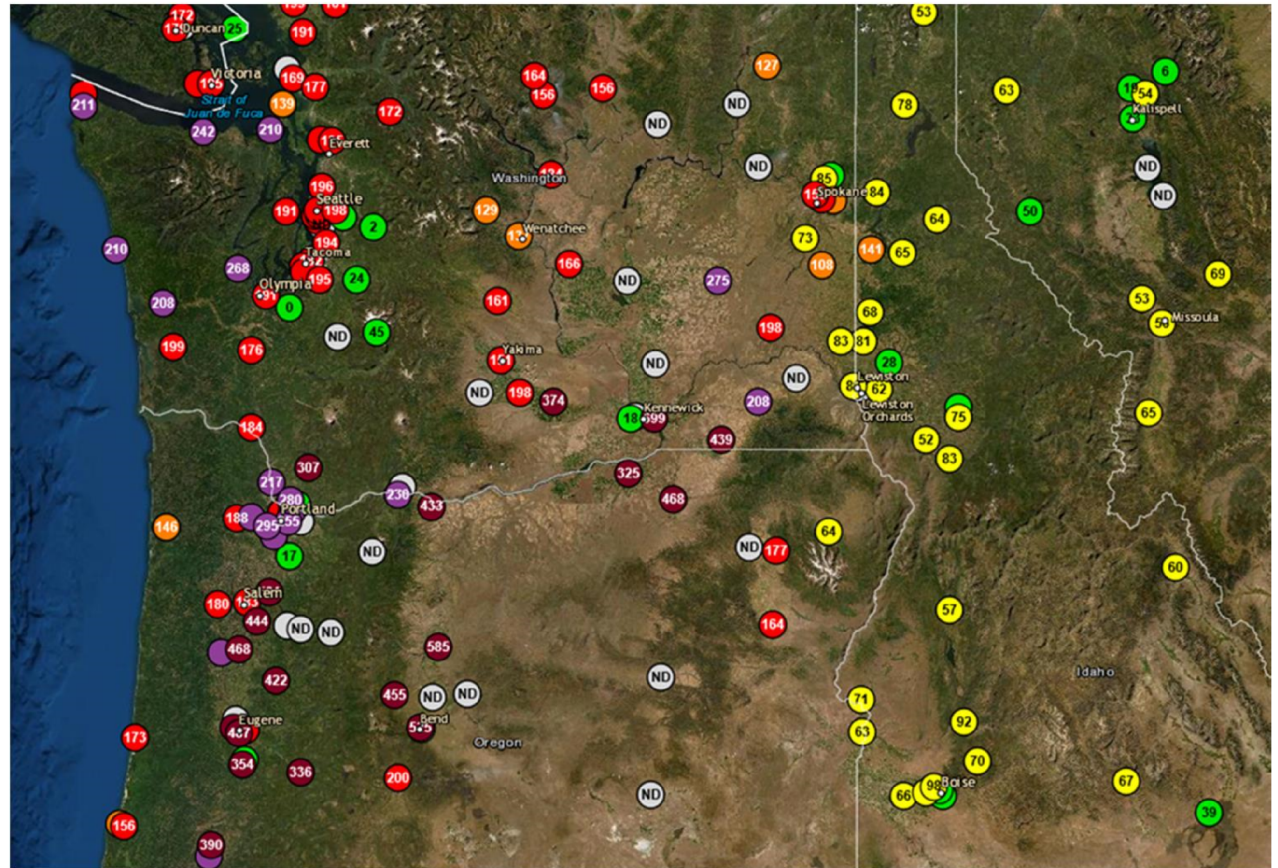
Dispatch Priorities

- **Salem/Chemawa**
 1. Jones Canyon-Tumble Creek section of Jones Canyon-Santiam #1 230kv line, Chemawa Crew has patrolled all they can due to fires on days off until Monday, available if needed
 - ** The fire threatening Marion substation remains the biggest concern**
- **Grand Coulee**
 1. Fiber break on Grand Coulee-Chief Joseph #2 230kv line, line work on Grand Coulee-Chief Joseph #1 and #2 230kv lines
 2. Grand Coulee-Foster Creek #1 115kv line, primary Station Service source to Chief Joseph 500kv yard, Foster Creek substation has been energized from Douglas Foster Creek substation from Wells (Nespelem COOP feeders 1&2 and Chief Joseph 500kv SS)
- Buckley remains on engine generators for Station Service power (SS is fed from Jones Canyon-Santiam #1 230kv line) . Fuel needs have been addressed
- When time permits, request North Bend TLM Patrol the Bandon-Rogue 115kv, Fairview-Rogue 230kv and Reedsport-Fairview #1 115kv line near the Lakeside tap due to reports of fires.

BPA Situation Report

Planning Section Report

- Particulate hazards addressed by crews
- Crew combinations into the same geographical area
- Continued Fatigue monitoring and sequencing of shifts for Fire watch



BPA Situation Report

POD Outages as of 08:00

- Nilles Corner- Chicken Creek Section Grand Coulee – Foster Creek No 1 115 kV line
 - Normal POD still out.
 - Nespelem POD Restored from Douglas. Customer restored.
 - Chief Joe SS other trouble.
- Brewster – Foster Creek (TOP line for Okanogan)
 - North Bar POD (Douglas Co.) OOS 0345 9/8
 - Just listed here as they loop through our system
 - Still out. Eta unknown. 9/11 @ 1115 restored up to Foster Creek.
- Jones Canyon – Santiam #1 230 KV line
 - Forces out Buckley Station Service
 - Tumble Creek Restored. CPI to restore load.
 - Wind Generation restricted to 50% name plate.
- Cougar – Holden Creek (some TOP, some ours)
 - Forces out Cougar PH, Trailbridge and Carmen Smith generation.
 - Blue River POD for Lane Electric is OOS on this line.

BPA Situation Report

Report Outs

- Crew Planning Director – Nate Seabury
- Crew Logistics Director – Neva Allen
- Public Information Officer- Doug Johnson
- Liaison Officer- Marybeth O’Leary

From: Peacock Williamson,Julie (BPA) - DIR-7

Sent: Tue Sep 08 19:16:04 2020

To: Cathcart,Michelle M (BPA) - TO-DITT-2

Cc: Shaheen,Richard L (BPA) - T-DITT-2

Subject: RE: Oregon Wildfires: Santiam Canyon wildfires started by downed power lines, priority on 'saving lives'

Importance: Normal

Attachments: image001.jpg; image002.jpg; image003.jpg; image004.jpg; image005.jpg; image006.jpg; image007.jpg

Thanks I will send this over.

Best,

Julie

From: Cathcart,Michelle M (BPA) - TO-DITT-2 <mmcathcart@bpa.gov>

Sent: Tuesday, September 8, 2020 6:28 PM

To: Peacock Williamson,Julie (BPA) - DIR-7 <jxpeacockwilliamson@bpa.gov>

Cc: Shaheen,Richard L (BPA) - T-DITT-2 <rlshaheen@bpa.gov>

Subject: RE: Oregon Wildfires: Santiam Canyon wildfires started by downed power lines, priority on 'saving lives'

We continue to monitor the fire near Marion substation. If the fire causes the entire substation to trip, we will need to shed load, in coordination with RC West, PAC and PGE.

Sent from Workspace ONE Boxer

On Sep 8, 2020 6:10 PM, "Peacock Williamson,Julie (BPA) - DIR-7" <jxpeacockwilliamson@bpa.gov> wrote:

No word back from ESF-12 yet, I think this is a newly named fire that there isn't a lot of collective data on yet.

Commissioner Tawney from the Oregon PUC called this evening to check in; are there any expected impacts to the system that would be good to let the Governor's office or PUC know about?

Thank you!

Julie

From: Cathcart,Michelle M (BPA) - TO-DITT-2 <mmcathcart@bpa.gov>

Sent: Tuesday, September 8, 2020 3:38 PM

To: Peacock Williamson,Julie (BPA) - DIR-7 <jxpeacockwilliamson@bpa.gov>

Subject: RE: Oregon Wildfires: Santiam Canyon wildfires started by downed power lines, priority on 'saving lives'

Thank you – I think it is that Santiam fire that we really need to understand. I had heard there was a new fire over night and assumed that was the holiday farm fire, but the Santiam is closer to where our concern would be.

Michelle Cathcart (She/Her/Hers)

Vice President | Transmission System Operations

Bonneville Power Administration

bpa.gov | P 360-418-8775 | C (b)(6)

Facebook-Icon_31x31_v3Flickr-Icon_31x31Instagram-Icon_31x31LinkedIn-Icon_31x31Twitter_31x31YouTube_31x31

From: Peacock Williamson,Julie (BPA) - DIR-7 <jxpeacockwilliamson@bpa.gov>

Sent: Tuesday, September 8, 2020 3:37 PM

To: Cathcart,Michelle M (BPA) - TO-DITT-2 <mmcathcart@bpa.gov>

Subject: RE: Oregon Wildfires: Santiam Canyon wildfires started by downed power lines, priority on 'saving lives'

Still waiting to hear back from ESF-12, but I am watching the Governor's press conference and will send notes when it's done. They said there is a new fire which they are calling the Santiam Fire, I updated our question into ESF-12 to understand what time that fire started.

From: Cathcart,Michelle M (BPA) - TO-DITT-2 <mmcathcart@bpa.gov>
Sent: Tuesday, September 8, 2020 12:53 PM
To: Peacock Williamson,Julie (BPA) - DIR-7 <jxpeacockwilliamson@bpa.gov>
Subject: RE: Oregon Wildfires: Santiam Canyon wildfires started by downed power lines, priority on 'saving lives'

I believe it is Holiday Farm. I know Beachie Creek and Lionshead started before our trip.

Michelle Cathcart (She/Her/Hers)

Vice President | Transmission System Operations

Bonneville Power Administration

bpa.gov | P 360-418-8775 | C (b)(6)

Facebook-Icon_31x31_v3Flickr-Icon_31x31Instagram-Icon_31x31LinkedIn-Icon_31x31[Twitter_31x31](#)YouTube_31x31

From: Peacock Williamson,Julie (BPA) - DIR-7 <jxpeacockwilliamson@bpa.gov>
Sent: Tuesday, September 8, 2020 12:51 PM
To: Cathcart,Michelle M (BPA) - TO-DITT-2 <mmcathcart@bpa.gov>
Subject: RE: Oregon Wildfires: Santiam Canyon wildfires started by downed power lines, priority on 'saving lives'

Do you know which fire that was near? Beachie Creek, Lionshead, or Holiday Farm?

Thanks I'm reaching back out to the Governor's office now. They are having a press conference at 3 p.m. to talk about the state of the fires.

From: Cathcart,Michelle M (BPA) - TO-DITT-2 <mmcathcart@bpa.gov>
Sent: Tuesday, September 8, 2020 12:48 PM
To: Peacock Williamson,Julie (BPA) - DIR-7 <jxpeacockwilliamson@bpa.gov>; Hairston,John L (BPA) - K-7 <jlhairston@bpa.gov>; Furrer,Robin R (BPA) - N-7 <rrfurrer@bpa.gov>; James,Daniel M (BPA) - D-7 <dmjames@bpa.gov>; Shaheen,Richard L (BPA) - T-DITT-2 <rlshaheen@bpa.gov>; Cogswell,Peter (BPA) - DI-7 <ptcogswell@bpa.gov>; Cook,Joel D (BPA) - P-6 <jdcook@bpa.gov>; McDonald,Thomas A (BPA) - C-7 <tamcdonald@bpa.gov>; Scruggs,Joel L (BPA) - DK-7 <jlsruggs@bpa.gov>; Lahti,John A (BPA) - TFH-CSB-1W <jalahti@bpa.gov>
Cc: Scruggs,Joel L (BPA) - DK-7 <jlsruggs@bpa.gov>; Johnson,G Douglas (BPA) - DK-7 <gdijohnson@bpa.gov>
Subject: RE: Oregon Wildfires: Santiam Canyon wildfires started by downed power lines, priority on 'saving lives'

Can we get any information on when they believe the fire started? Our line trip was at 0029 this morning.

Michelle Cathcart (She/Her/Hers)

Vice President | Transmission System Operations

Bonneville Power Administration

bpa.gov | P 360-418-8775 | C (b)(6)

Facebook-Icon_31x31_v3Flickr-Icon_31x31Instagram-Icon_31x31LinkedIn-Icon_31x31Twitter_31x31YouTube_31x31

From: Peacock Williamson,Julie (BPA) - DIR-7 <jxpeacockwilliamson@bpa.gov>

Sent: Tuesday, September 8, 2020 12:41 PM

To: Cathcart,Michelle M (BPA) - TO-DITT-2 <mmcathcart@bpa.gov>; Hairston,John L (BPA) - K-7 <jlhairston@bpa.gov>; Furrer,Robin R (BPA) - N-7 <rrfurrer@bpa.gov>; James,Daniel M (BPA) - D-7 <dmjames@bpa.gov>; Shaheen,Richard L (BPA) - T-DITT-2 <rlshaheen@bpa.gov>; Cogswell,Peter (BPA) - DI-7 <ptcogswell@bpa.gov>; Cook,Joel D (BPA) - P-6 <jdcook@bpa.gov>; McDonald,Thomas A (BPA) - C-7 <tamcdonald@bpa.gov>; Scruggs,Joel L (BPA) - DK-7 <jlscruggs@bpa.gov>; Lahti,John A (BPA) - TFH-CSB-1W <jalahti@bpa.gov>

Cc: Scruggs,Joel L (BPA) - DK-7 <jlscruggs@bpa.gov>; Johnson,G Douglas (BPA) - DK-7 <gdjohnson@bpa.gov>

Subject: Oregon Wildfires: Santiam Canyon wildfires started by downed power lines, priority on 'saving lives'

In the Statesman Journal:

<https://www.statesmanjournal.com/story/news/2020/09/08/oregon-wildfires-santiam-canyon-fires-caused-downed-power-lines/5744657002/>

Oregon Wildfires: Santiam Canyon wildfires started by downed power lines, priority on 'saving lives'

[Zach Urness](#)

Salem Statesman Journal

0:00

0:37

The wildfires terrorizing the Santiam Canyon Tuesday morning were started by falling trees that knocked down power lines and ignited small fires that grew on historically high winds, officials said.

The swift growth of the blazes, which brought evacuations up and down the Santiam Canyon, required fire teams to evacuate their own command posts twice overnight and into the morning, before falling back to Salem, Northwest Coordination Center spokeswoman Carrol Connolly said.

It's unclear exactly where the active fire is burning, Connolly said, but it's likely somewhere in the Lyons and Mehama area, although it has moved north near the Scotts Mills area, she said.

The fire has not yet reached Stayton, officials said. The town remains on a level 2 evacuation, meaning "get set to go," according to the [City of Stayton](#). The rest of the Santiam Canyon from Lyons-Mehama to Detroit, Idanha and the Little North Fork area have been under a level 3 "go now" evacuation since early in the morning.

[News:Map traces current fires burning across northwest Oregon in real-time](#)

https://www.gannett-cdn.com/authoring/video-thumbnails/b263316e-d0cd-4a58-a3e0-1913f1d65825_poster.jpg?width=660&height=371&fit=crop&format=pjpg&auto=webp

The main goal now, Connolly said, is evacuating anybody in the path of fires that are expected to kick up on high winds this afternoon.

"The priority right now is getting folks out of the area," Connolly said. "This is about saving lives. And while we are taking firefighting actions, we can't put firefighters in the way of a fire on 50 mph winds, or a position that they can't get out of."

The Beachie Creek Fire, which began in the Opal Creek Wilderness, and Lionshead Fire, which started near Mount Jefferson, also made major runs overnight, but Connolly said they were three different fires, although they now feel close together.

They're working to determine the perimeter of all three fires.

The Oregon State Fire Marshall, Marion County and the U.S. Forest Service are amassing as new teams begin to arrive in the area.

Connolly said the wildfires east of Salem were the No. 3 priority in the nation at this point, and should get an influx of resources.

Those evacuating the fire from Mill City and the Breitenbush areas described widespread flames and a number of homes burning.

"As soon as we got to the edge of town we could see houses and trees burning on both sides of the road," said Mike Ferris, who evacuated from Mill City around 2 a.m. "We could see houses on fire on the Linn County side of the North Santiam."

The fires have apparently been quieter this morning, but more dry winds are expected to kick Tuesday afternoon.

"Unfortunately we are forecasting gusty winds in Santiam Canyon through (Tuesday) morning," National Weather Service meteorologist Tyler Kranz said. "We'll see gusts up to 50 mph before they slow down to 40 mph in the

afternoon and somewhat better in the evening. But it's not until Wednesday when the winds die down and even then, the fire weather doesn't improve much until Thursday."

From: Cathcart,Michelle M (BPA) - TO-DITT-2 <mmcathcart@bpa.gov>
Sent: Tuesday, September 8, 2020 11:33 AM
To: Peacock Williamson,Julie (BPA) - DIR-7 <jxpeacockwilliamson@bpa.gov>; Hairston,John L (BPA) - K-7 <jlhairston@bpa.gov>; Furrer,Robin R (BPA) - N-7 <rrfurrer@bpa.gov>; James,Daniel M (BPA) - D-7 <dmjames@bpa.gov>; Shaheen,Richard L (BPA) - T-DITT-2 <rlshaheen@bpa.gov>; Cogswell,Peter (BPA) - DI-7 <ptcogswell@bpa.gov>; Cook,Joel D (BPA) - P-6 <jdcook@bpa.gov>; McDonald,Thomas A (BPA) - C-7 <tamcdonald@bpa.gov>; Scruggs,Joel L (BPA) - DK-7 <jlscruggs@bpa.gov>; Lahti,John A (BPA) - TFH-CSB-1W <jalahti@bpa.gov>
Subject: RE: Follow Up with Oregon

Please note, our Detroit-Santiam line tripped out at 0029 this morning. From our fire map, it appears the fire started between ROWs, (i.e. fire caused trip rather than vice versa), but any info we can get on timing or where ODF believes the fire started would be helpful.

Michelle Cathcart (She/Her/Hers)

Vice President | Transmission System Operations

Bonneville Power Administration

bpa.gov | P 360-418-8775 | C (b)(6)

Facebook-Icon_31x31_v3Flickr-Icon_31x31Instagram-Icon_31x31LinkedIn-Icon_31x31[Twitter_31x31](#)YouTube_

31x31

From: Peacock Williamson,Julie (BPA) - DIR-7 <jxpeacockwilliamson@bpa.gov>
Sent: Tuesday, September 8, 2020 11:04 AM
To: Hairston,John L (BPA) - K-7 <jlhairston@bpa.gov>; Furrer,Robin R (BPA) - N-7 <rrfurrer@bpa.gov>; James,Daniel M (BPA) - D-7 <dmjames@bpa.gov>; Shaheen,Richard L (BPA) - T-DITT-2 <rlshaheen@bpa.gov>; Cathcart,Michelle M (BPA) - TO-DITT-2 <mmcathcart@bpa.gov>; Cogswell,Peter (BPA) - DI-7 <ptcogswell@bpa.gov>; Cook,Joel D (BPA) - P-6 <jdcook@bpa.gov>; McDonald,Thomas A (BPA) - C-7 <tamcdonald@bpa.gov>
Subject: RE: Follow Up with Oregon

Hello All,

Sorry to circle back around, as soon as I hit the send button the Kristen called back after a conversation with the State Fire Marshall. He has indicated that he believes that some of these fires were definitely ignited by the electric system ("it's either power lines or lightening, and there was no lightening). He does not know whose system it was (distribution, transmission/ and/or utility).

She said she does believe that if he gets a question about the source he feels confident enough to say some of the fires were started by power lines. (However, there is no indication that it could not be another source, fireworks, campfire, etc. but several fires were sparked it sounds like, so there could be multiple sources.) This is related to fires that are on the West slope of the Cascades, along the Santiam River near Stayton, Detroit, and Idhana.

She has indicated that they do not know how they will respond if they get a question about this, but will keep us in the loop as they get more information.

Please let me know if there is other action I should take.

Julie

From: Peacock Williamson,Julie (BPA) - DIR-7

Sent: Tuesday, September 8, 2020 10:41 AM

To: Hairston,John L (BPA) - K-7 <jlhairston@bpa.gov>; Furrer,Robin R (BPA) - N-7 <rrfurrer@bpa.gov>; James,Daniel M (BPA) - D-7 <dmjames@bpa.gov>; Shaheen,Richard L (BPA) - T-DITT-2 <rlshaheen@bpa.gov>; Cathcart,Michelle M (BPA) - TO-DITT-2 <mmcathcart@bpa.gov>; Cogswell,Peter (BPA) - DI-7 <ptcogswell@bpa.gov>

Subject: Follow Up with Oregon

Hello All,

I've just spoken with the Oregon Governor's office about the comments made by the Oregon Department of Forestry on ignition sources during yesterday evening's call. The Governor's office advisor (Kristen Sheeran) **said that they have no indication that electric lines are an ignition source of the fire at this time.** However, what has happened is that the Department of Forestry has seen downed power lines and is making a connection

between downed lines and the fires. Kristen has expressed to Forestry that down power lines do not indicated causality; and the fires could have caused down power lines.

Kristen indicated that this is very concerning to both the Governor's office and the Public Utility Commission; and that this is being communicated directly to the Department of Forestry. They are requesting that Forestry refrain from making assumptions, especially in broader forums when no investigation has occurred since the fires are extremely active at this time.

I let Kristen know that we are available to talk directly to Forestry if that would help in emphasizing the importance of not making assumptions. She said she will keep us informed on the progress of this conversation.

On another note, Kristen indicated that this is one of the worst fire events that the state has ever seen. She described the situation as "very volatile and chaotic". They are anticipated a loss of life in Santiam Canyon given the strong wind and that the fire basically "barreled down Highway 22" last night. They are still in the middle of evacuations.

Please let me know if you have follow up questions; or there is anything else I can do.

Best,

Julie

Julie Peacock

Oregon Liaison | Regional Relations

Bonneville Power Administration

bpa.gov | Desk: 503.230.3100 | Cell: (b)(6)

BPA Fire IMT Daily Briefing

9/10/2020 PM

Every day we are assessing facility damage and updating restoration plan. This is executive summary for the day.

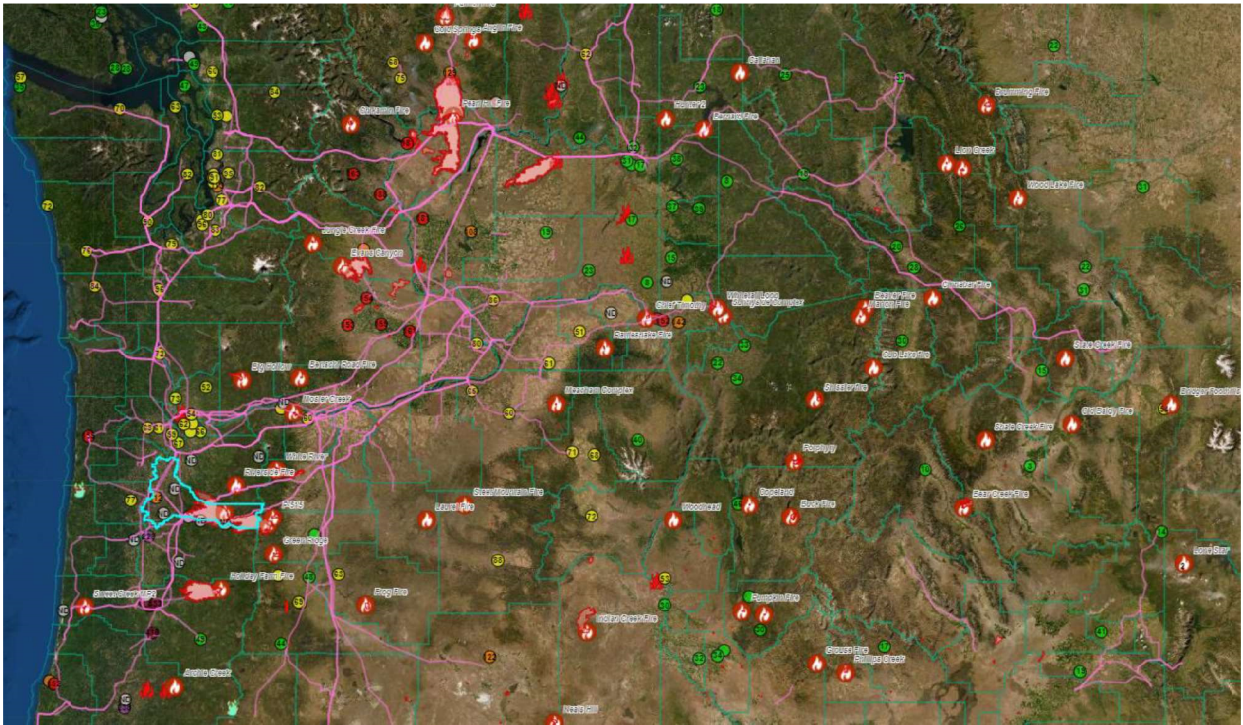
Current Concerns:

1. Safety of responders – BPA is in constant contact with field crews and actively monitoring safety (increased air quality concerns)
2. COVID 19 precautions, following current Back to Work Guidelines.
3. Fatigue – monitoring and managing the crews fatigue and adherence to the Extended Work Hour Policy.
4. Lodging – due to evacuations and first responders, lodging is difficult to find and may become an issue. So far keeping up.

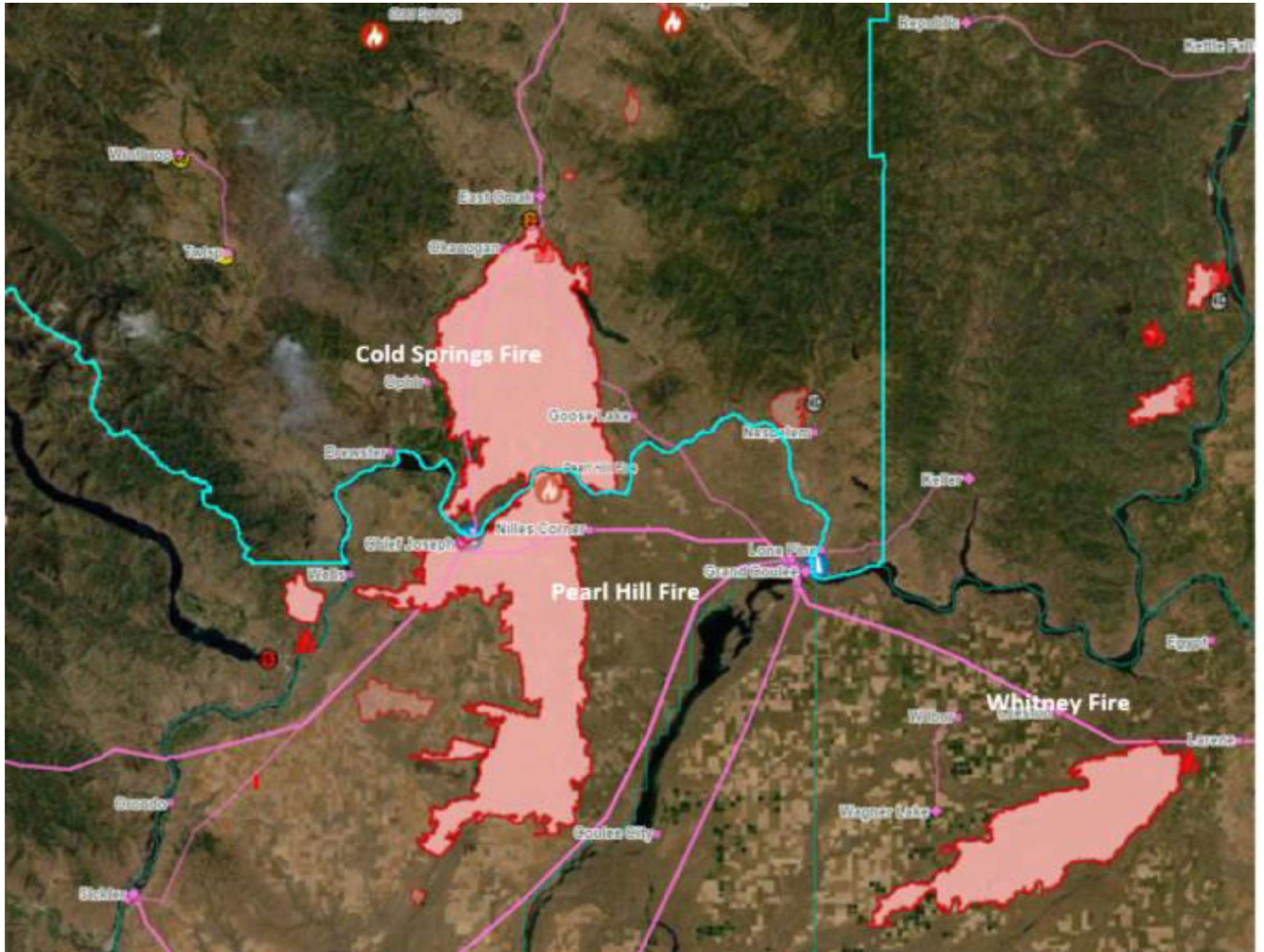
Northwest Fire Weather Summary:

We are actively monitoring local fires and will be updating maps/status reports to reflect current status. Current report out are the most priority for system impacts at this time.

System View with Fires:



**Washington Fires: North Operations Section Focus on Chief Joe Area -Fiber Restoration as top priority
Cold Springs, Pearl Hill and Whitney Fires**



Cold Springs Fire: 162,830 + acres and **Pearl Hill Fire:** 174,571+ acres

Counties Impacted: Douglas, Chelan, Okanogan

Powerhouse: Chief Joseph CJPH

Substations nearby:

1. Chief Joseph
2. Foster Creek FSTC & FOST,
3. Nilles Corner NICO,
4. Goose Lake

Whitney Fire: 102,924+ acers

Counties impacted: Lincoln

Substations nearby:

1. Creston CRES
2. Larene LREN
3. Wagner Lake WAGL
4. Wilbur WILU

System priorities: as of 1730 from Rob Schoenberg

South Region

1. Marion Substation (Stayton, OR area) - is currently greatest concern. Crews have completed a fire break. There is a 24 hour fire watch with report out three times a day. Current reports of heavy smoke with no flames visible in any direction. A water tanker on site. Fire crew is not present but available when needed. Loss of multiple 500 lines will result in load shedding in Oregon. Dispatch is working with other utilities to create load shed plan for contingency plan. Additionally creating contingency plan for Fiber Optic break. We are in constant communication with the Fire IC.
2. Jones Canyon-Santiam #1 230kv line (out of service)
 - a. Out of Service 0536 9/8
 - b. Fire in area limiting ability to travel
 - c. Tumble Creek POD OOS
 - d. Hall Mt. Radio station at risk of fire
 - e. Forces out Buckley Station Service
 - f. Forces out/limits multiple wind generation
 - g. Priority #1 for Salem crews
 - h. Patrols to continue tomorrow from Jones Canyon-Tumble Creek section if conditions allow
3. Request for North Bend TLM to patrol the Bandon-Rogue 115kv line, Fairview-Rogue 230kv line, and the Reedsport-Fairview #1 115kv line near the Lakeside tap, due to reports of fire.

North Region

1. Grand Coulee-Chief Joseph No 1&2 230kv lines (Fiber break #1 Priority, Lines #2)
 - a. Out of service 0727 9/7
 - b. Reason out of service: 11 structures down
 - c. Points of Delivery out – no points on this line
 - d. Does it cause any ill effects on system? – Fiber optic repairs needed asap
 - e. Priority for restoration - fiber is considered #1 priority
 - f. Plan for restoration – (See restoration plan below)
2. Grand Coulee-Foster Creek No 1 115 kV line (primary Station Service source to Chief Joseph 500kv yard)
 - a. Chicken Creek – Foster Creek – Nilles Corner
 - b. Lines down- Multiple structures down between Nilles and Foster Creek
 - c. Nespelem POD – not sure of customer ability to receive load yet
 - i. Chief Joe SS is fed from here
 - d. Priority job for north crews is Chief Joe SS
 - e. Clearances issued and work planned to complete tomorrow
 - f. Dispatching is in agreement if crews are pulled off this line to assist with fiber work and then resume work to restore Chief Joseph SS after fiber splices have been made

Station Service

Buckley remains on engine generators for Station Service power (SS is fed from Jones Canyon-Santiam #1 230kv line). Fuel needs have been addressed.

Fiber Break Priority: Risk/Impacts/Restoration Plan



Risk due to Fiber Break on GCOU-CHJO 230KV #2 on 09-07-2020

09-02-2020: Fiber went into alarm. Investigation revealed fiber degradation between SHUL and SCLR. Due to declared Restricted Maintenance Operation (RMO), repair of this 'Partial Break' was postponed as the in-use (lit) fibers seems to be within spec & stable with no physical damage located.

09-07-2020: During Wind/Fire Storm, the Fiber between CHJO and GCNC broke multiple places due to structure failure (poles burn down):

- All critical operational traffic rerouted.
- The Partial Break had further degraded: The lit fibers are OK and not-in-use (dark) fibers have severely degraded.
- Fire was also threatening the fiber between GCFI and MCC.

09-07-2020 to Current:

- Various fires have, at various times, threatened the fiber between SHUL & COUL and between GCFI & MCC.
- The partial break had further degraded:
- Lit fibers are attenuated, but still usable (we are running on them)
- The dark fibers have failed.
- A burnt pole with known existing fiber damaged was discovered to have new physical cable damage between SCLR and CHJO:
- It is carrying the operation traffic with no alternate route.
- So, the extent of this damage is unknown,
- And we are not testing (disturbing) it until the other side is fixed.

System Impacts due to Fiber Break on GCOU-CHJO 230KV #2 on 09-07-2020

Currently all critical operational traffic is rerouted, but there is no redundancy. If a second failure happens (loss of power, electronics, or another fiber break anywhere on this system) up to 650 communications and control circuits will be lost. The most critical (~253) of these circuits (RAS, TT, and SCADA) were provided to the Tech Staff. Their preliminary analysis of loss of this sub-set of circuits would result in:

- The loss of ability to arm Gen Drop at Grand Coulee, Chief Joseph and Wells will likely limit the NWACI and PDCI limits as follows:
 - NWACI TTC limit will go from 4800MW down to 3000MW, actual flow is currently 3002MW
 - PDCI TTC limit will go from 3210MW down to 2100MW, actual flow is currently 1574MW
- Removing the Grand Coulee-Schultz #1&2 500kv lines due to no MWTT and CHJO-SNOH & RKYR-MPLV operating at 230kv will limit NOH and WOCN as follows:
 - NOH N-S TTC limit will go from 4050MW down to 3769MW, actual flow is currently is 847MW
 - WOCN TTC limit will go from 8383MW down to 7443MW, actual flow is currently 3425MW
- Failure of DCB RAS, so BPA will only be running on the DCA RAS.
- Having to man 14 Sub-Stations due to loss of SCADA control from both Control Centers.
- Running WM RAS from MCC instead of DCC.
- Manual care and feeding of the RAS/IPS Schemes.
- Additionally: Not being able to use Grand Coulee and Chief Joseph will impact Hydro Duty.

Restoration Plan due to Fiber Break on GCOU-CHJO 230KV #2 on 09-07-2020

- Currently multiple TLM Crews on Site focused on fiber functionality
 - Final rebuild will happen later
- All crews focused on fiber restoration to have operational traffic back in service by:
 - EOD 09-12-2020 best case
 - EOD 09-14-2020 worst case
- Estimated time frames take into account all required coordination between all parties (i.e TLM, PSC, CC, etc).

- Safety & Health
 - Safety is priority #1
 - Working at safe pace
 - Managing fatigue and ensuring relief periods
 - COVID precautions
 - Social distancing / masks / self-assessments
 - Limited crew to crew interaction

Full Summary of Outages: as of 1730 from Rob Schoenberg

1. Grand Coulee – Chief Joseph #2 230 KV Line
 - a. Out of service 0727 9/7
 - b. Reason out of service: 11 structures down
 - c. Points of Delivery out – no points on this line
 - d. Does it cause any ill effects on system? – fiber optic repairs needed asap
 - e. Priority for restoration - fiber is considered #1 priority
 - f. Plan for restoration – crews will start today, only poles needed to string fiber, fiber to stay in travelers so it can be lit up ASAP
2. Grand Coulee – Chief Joseph #1 230kV line
 - a. Out of service 0727 9/7
 - b. Reason out of service: Lines down
 - c. Points of Delivery out – no points on this line
 - d. Does it cause any ill effects on system? - no
 - e. Priority for restoration- Lowest priority in region
 - f. Plan for restoration – TBD
3. Grand Coulee – Foster Creek No 1 115 kV line
 - a. Chicken Creek – Foster Creek – Nilles Corner
 - b. Lines down- Multiple structures down between Nilles and Foster Creek
 - c. Nespelem POD – not sure of customer ability to receive load yet
 - i. Chief Joe SS is fed from here
 - d. Priority #2 job for north crews is Chief Joe SS
4. Grand Coulee – Okanogan #2 115kV line
 - a. Goose Lake – Okanogan section OOS
 - b. Lines down?
 - c. No Points of Delivery (POD) out of service
 - d. Priority is below fiber and below chief jo SS and nespelem
5. Brewster – Foster Creek (TOP line)
 - a. North Bar POD OOS 0345 9/8
 - b. Just listed here as they loop through our system
6. Okanogan PUD Okanogan to Ophir is OOS (feeds into Brewster)
7. Marion sub
 - a. Fire protection of substation
 - b. All 500 lines in service but corridor continues to be threatened
 - c. Loss of multiple 500 lines will result in load shedding in Oregon

- d. 500 kV corridor pictures available
- 8. Jones Canyon – Santiam #1 230 KV line
 - a. Out of Service 0536 9/8
 - b. Patrolled on ground from Santiam to Tumble Creek and looks OK – fire beyond tumble creek – and extensive damage around the line – hoping to fly again tomorrow
 - c. Tumble Creek POD OOS
 - d. Hall Mt. Radio station at risk of fire
 - e. Forces out Buckley Station Service
 - f. Forces out/limits multiple wind generation
 - g. Getting this line in service is high priority but it needs to be patrolled beyond Tumble Creek
- 9. Detroit – Santiam 230 KV Line
 - a. Out of Service 0029 9/8
 - b. Reports of significant damage to line
 - c. Forces out Big Cliff and Detroit PH
 - d. Same corridor as Jones Canyon - Santiam
- 10. Cougar – Holden Creek (some TOP, some ours)
 - a. Forces out Cougar PH, Trailbridge and Carmen Smith generation
 - b. Blue River POD for Lane electric is OOS on this line
 - c. EWEB line and they have reported a tree in it
 - d. Pictures and damage report from helo available was flown from Cougar to Blue River – hope to fly Blue River down to Holden Creek tomorrow
- 11. Forest Grove – Tillamook #1 115 KV Line
 - a. South Fork – Tillamook section OOS
 - b. 2nd level priority for south crews
 - c. Being worked on 9/9
- 12. Tillamook – Astoria No 1 115 KV Line
 - a. Our terminal still OOS, PACW trouble to Garibaldi
 - b. All POD's are energized
 - c. PACW picked up a terminal clearance today to work on it
- 13. Reedsport – Fairview – there was a fire today under 8/5 that is now extinguished but inspection will be necessary
- 14. Radio sites on Engine Generators (EG)
 - a. Lowell Butte (Lane Elec) 0116 9/8
 - b. Thunder Ridge (Rocky Mountain Power) 0106 9/8
 - c. Hall Ridge (has solar)
 - d. Scott Mountain
 - i. Fed from Douglas – they report burned up junction box and underground feeder – fire still in area 9/9/PM
- 15. Substations without Primary Station Service (SS)
 - a. Buckley on EG – district has refueling plan – comes from Jones Canyon - Santiam
 - b. Dworshak on EG – district has a refueling plan – comes from Clearwater power
- 16. Lost Creek Generation – out of service due to PACW line trouble
- 17. PACW issues

- a. PACW Tillamook B-1093 for Tillamook – Garibaldi section of Tillamook – PACW Astoria OOS 2250 9/7 Multiple trees in line from Tillamook out. All PODs in service
18. PGE issues
- a. Bethel – Round Butte OOS 2114 9/7 - this has effect on load dropping plans
19. For Reference – not associated with storm – Schultz Raver 3 and 4 lines get removed from service nightly for voltage control
20. Points of Delivery Summary list
- a. Foster Creek Nespelem Valley feeder 1 (includes chief joe SS and 2 other feeds)
 - b. Carmen PH EWEB feeder 1 (on Cougar line)
 - c. Blue river Lane Electric feeder 1 (on Cougar line)
 - d. Tumble creek consumers power feeder 1 (off of Jones Canyon line)

Restored:

1. Pearl-Marion #1 500 KV line, has been restored.
2. The Hills Creek-Lookout Point #1 115 KV has been restored.
3. North Bonneville-Troutdale #1 230 KV line, has been restored.
4. John Day – Marion #1 500 kv line has been restored.
5. Santiam consumers power feeder 1 (Marion SS) has been restored.
6. John Day-Marion #1 500kv line restored at 1345 9/9.
7. South Fork-Tillamook section of Forest Grove-Tillamook #1 115kv line, line section has been repaired and restored 9/9.
8. Hills Creek-Lookout Point #1 115kv line restored at 1009 today, will remain I/S tonight unless LEC opens feeders at Oakridge again 9/9.
9. Buckley and Dworshak Substation Service restored 9/9.
10. Jones Canyon-Santiam #1 230kv line, Tumble Creek-Santiam section restored 9/10 at 1228.
11. South Fork-Tillamook section of Forest Grove-Tillamook #1 115kv line, line has been repaired and restored to service 9/10 at 1645.
12. Grande Ronde-Boyer #1 115kv line section relayed O/S last night and was patrolled, nothing found, line was ready for service waiting on PACW to patrol their line. Restored to service 9/10 at 1742.

This document may contain SOC-Restricted Information. Under FERC Standards of Conduct, SOC-Restricted Information may not be shared with Marketing Function Employees (MFEs) unless certain criteria have been met (e.g., voluntary consent by the customer, a public OASIS posting, system emergencies, or other exceptions). Please take care to remove or otherwise redact the SOC-Restricted Information before forwarding or otherwise sharing with Marketing Function Employees.

BPA Situation Report

Operations Section Chief Report

- 7 Districts have suffered some sort of damage.
- We currently have 10 crews working this event.
- We have put back in service 13 different lines or line sections:
 - 6 – 115kv lines
 - 4 – 230kv lines
 - 3 – 500kv lines
- Currently out of service:
 - Fiber optic line
 - 6 lines
 - 1 substation on EG
- Communication sites affected:
 - 9 sites on EG as of 0900 9-12-2020
 - 1 site down
- Active fires still burning keeping crews from completing assessments or repairs.