

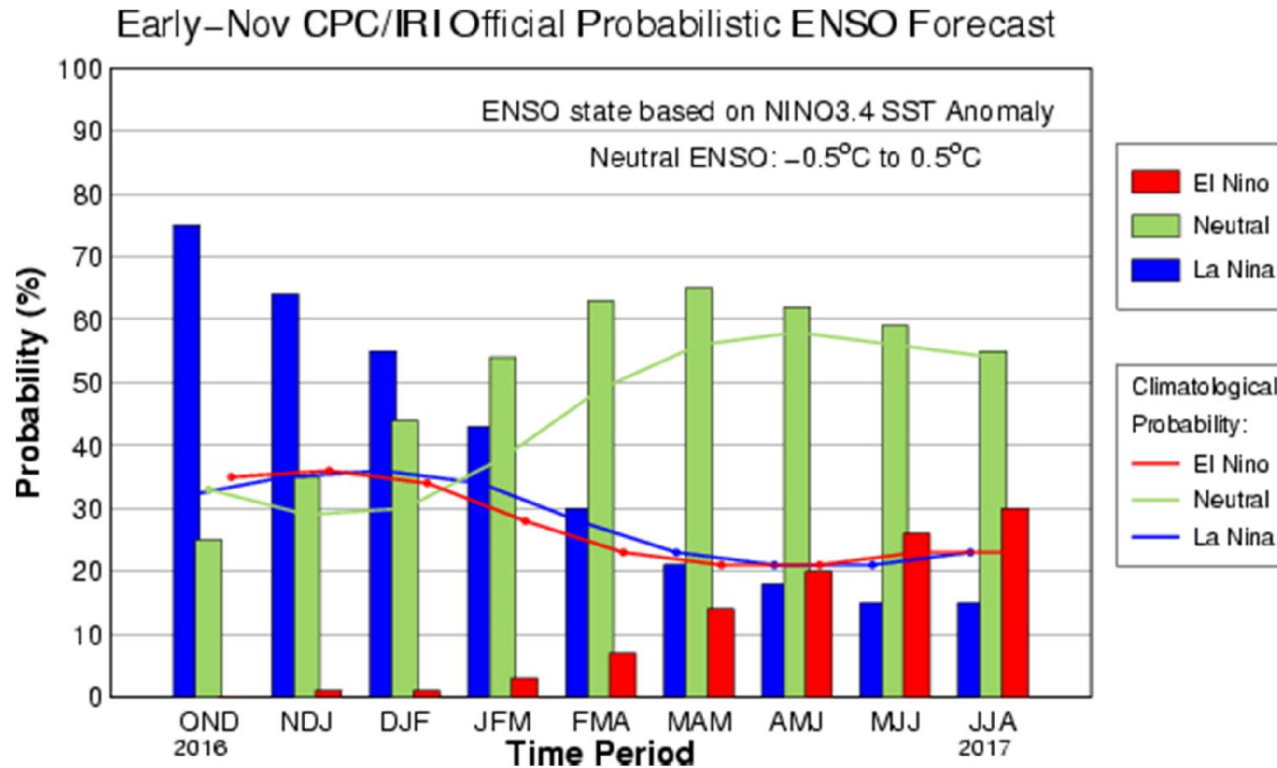
Ended with dry summer and glacier melt



...and extreme Wildfires



ENSO Conditions



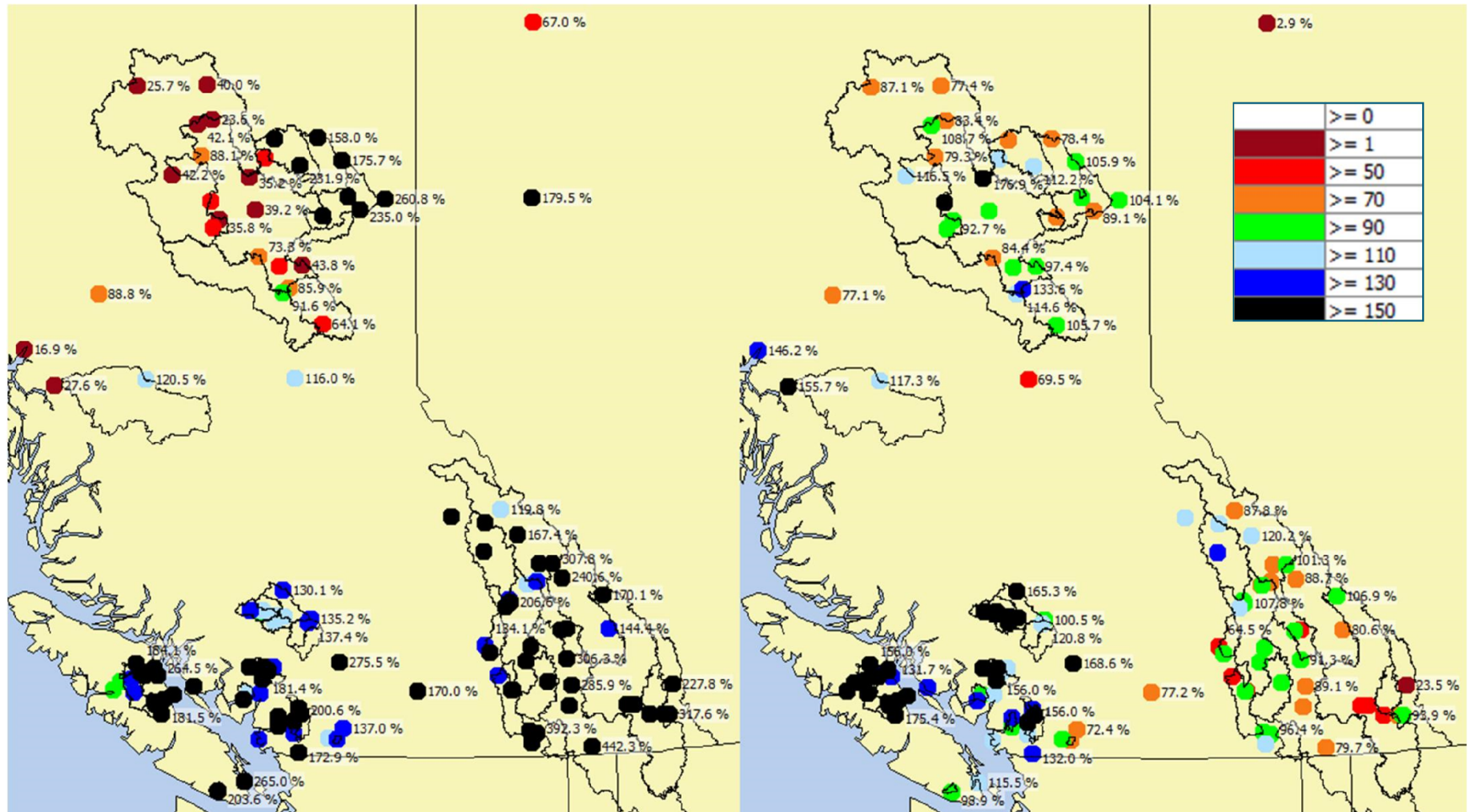
NOAA CPC (Nov 2016): Weak La Niña in place; transitioning to neutral over the winter

- Generally, ENSO has a small positive impact on the 2016 WSF regression equations

Precipitation (% of normal)

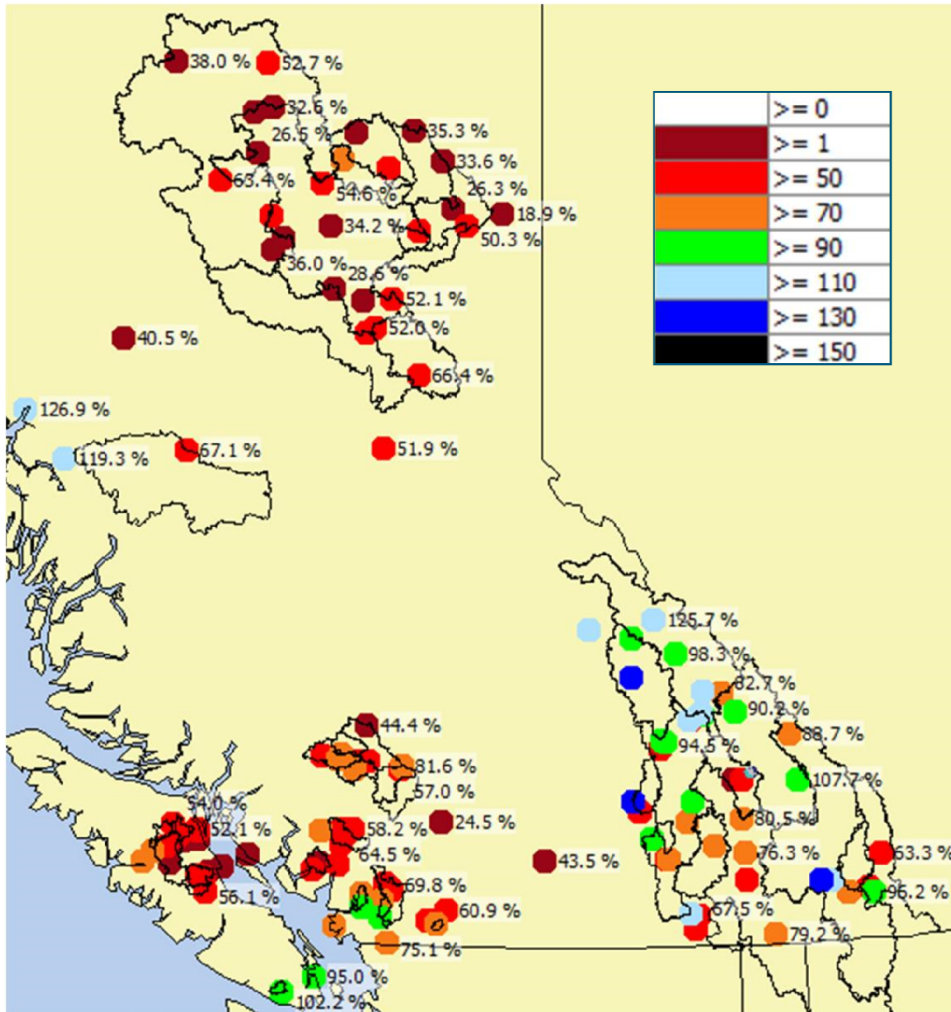
October

November

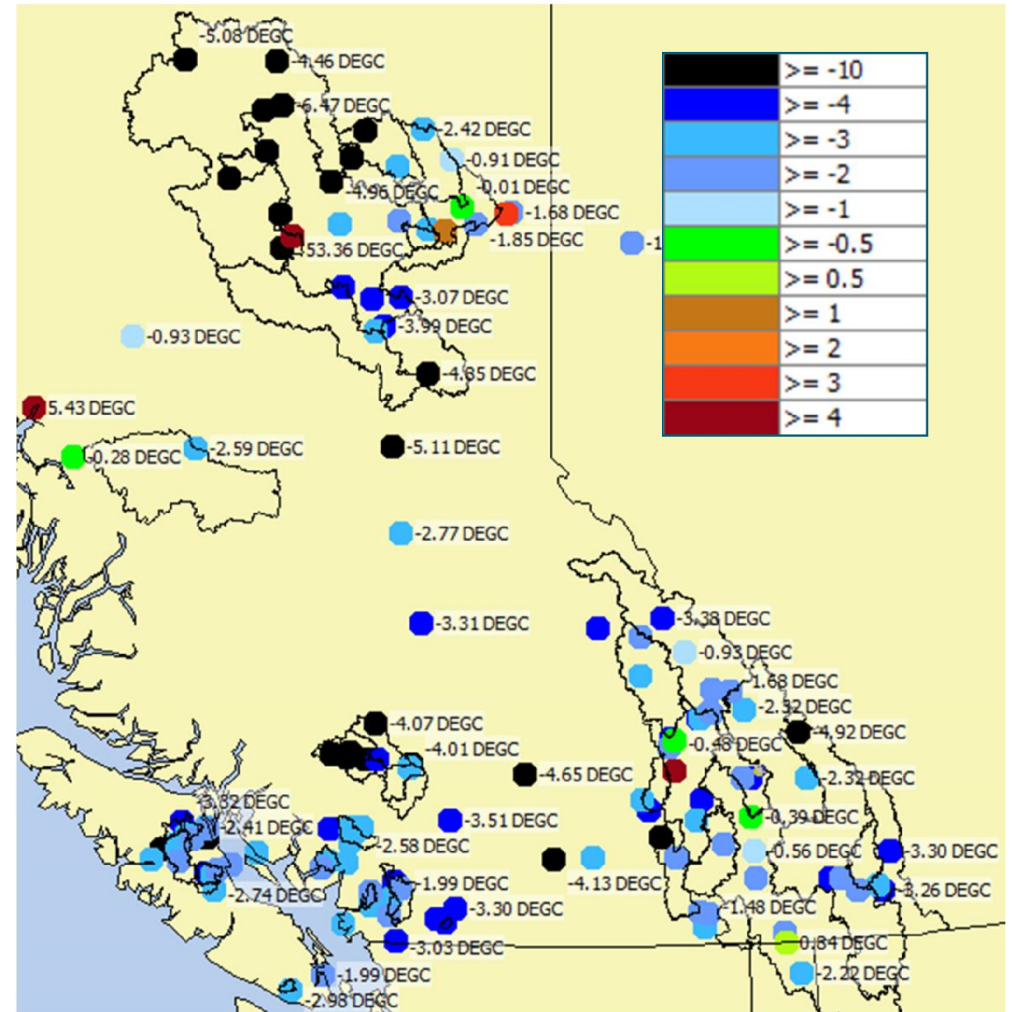


December Weather

Precipitation (% of normal)

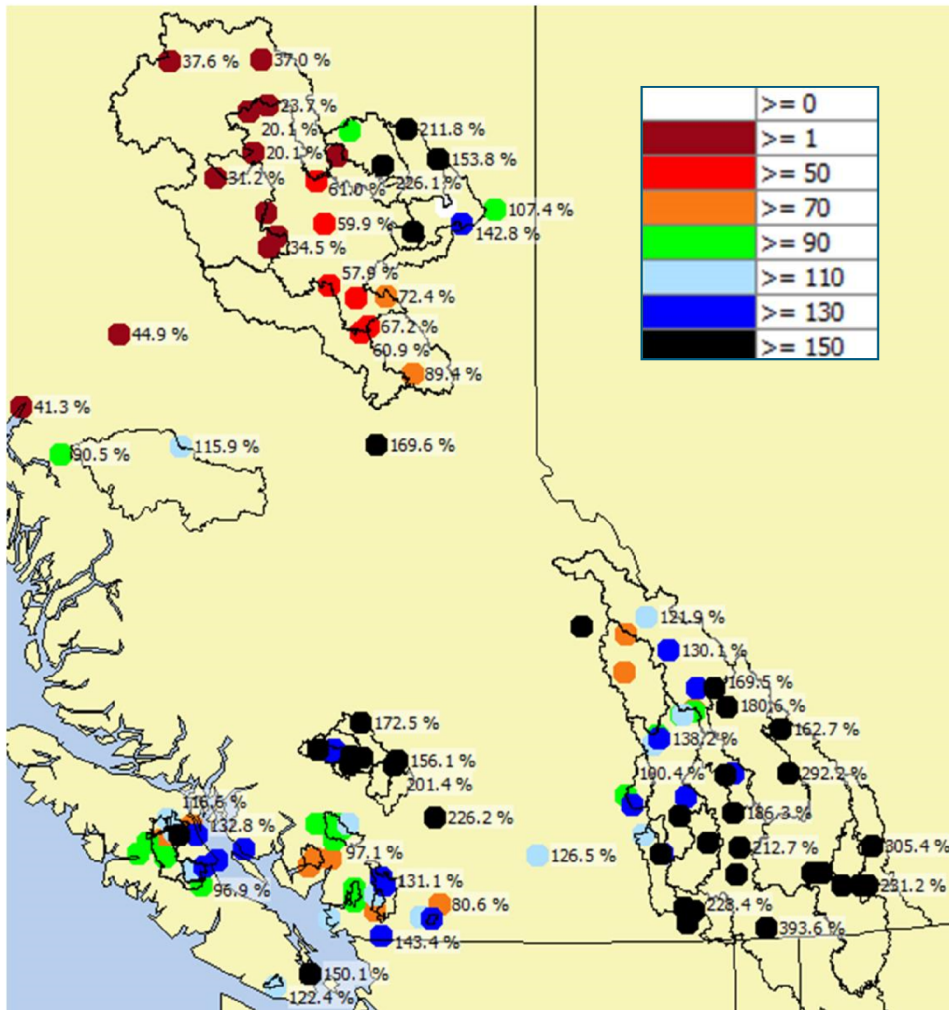


Temperature (deviation from normal)

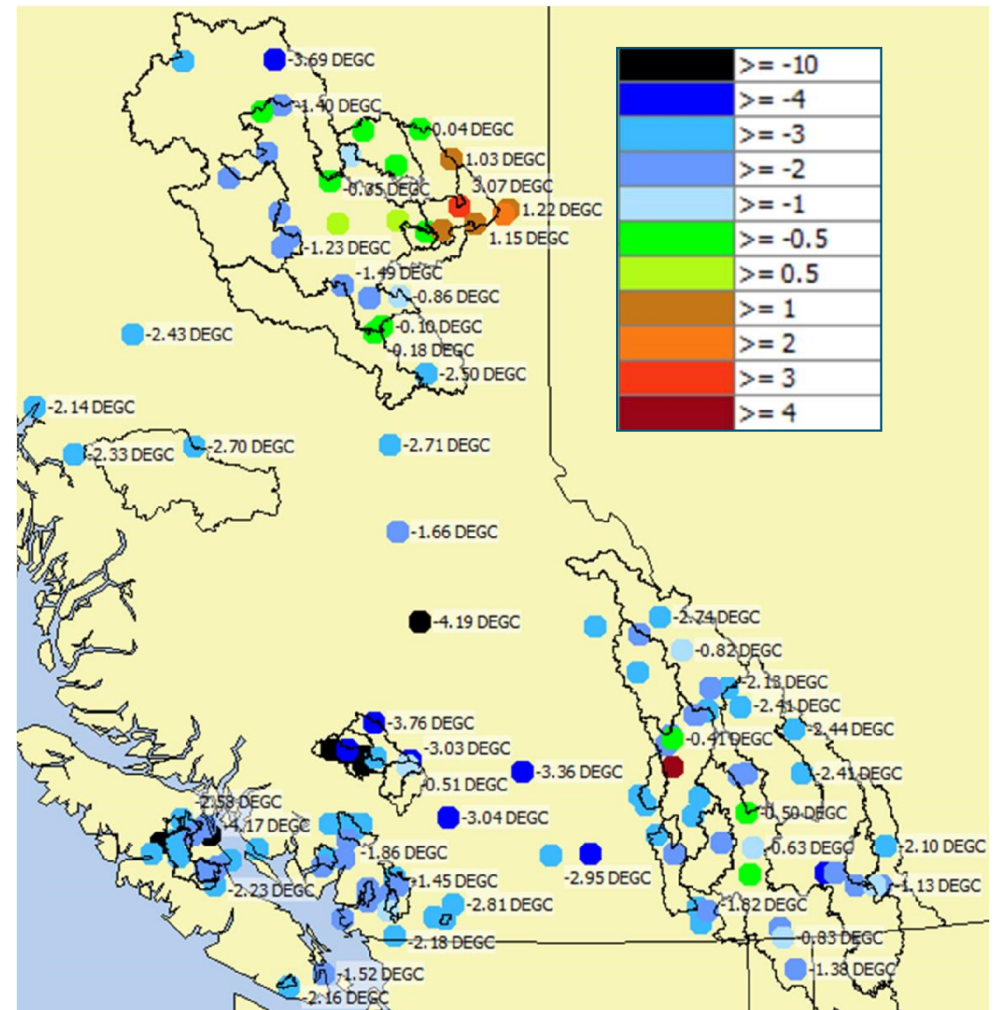


February Weather

Precipitation (% of normal)

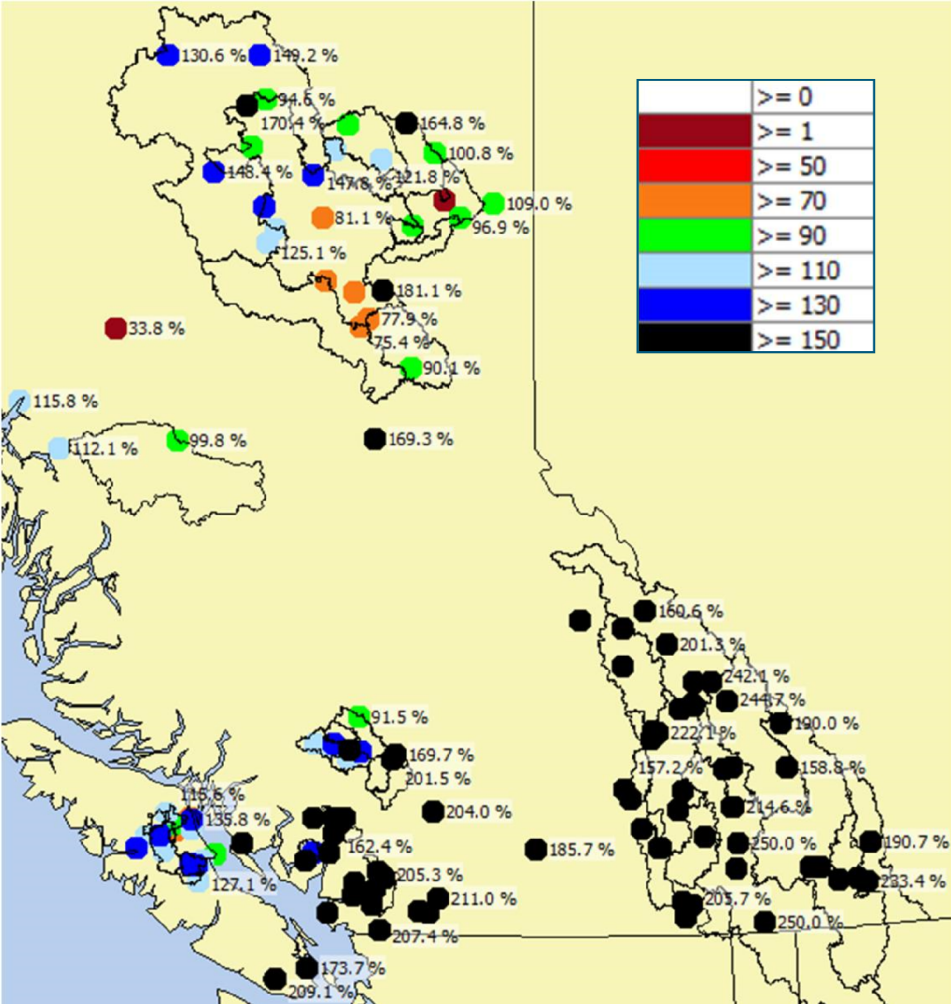


Temperature (deviation from normal)

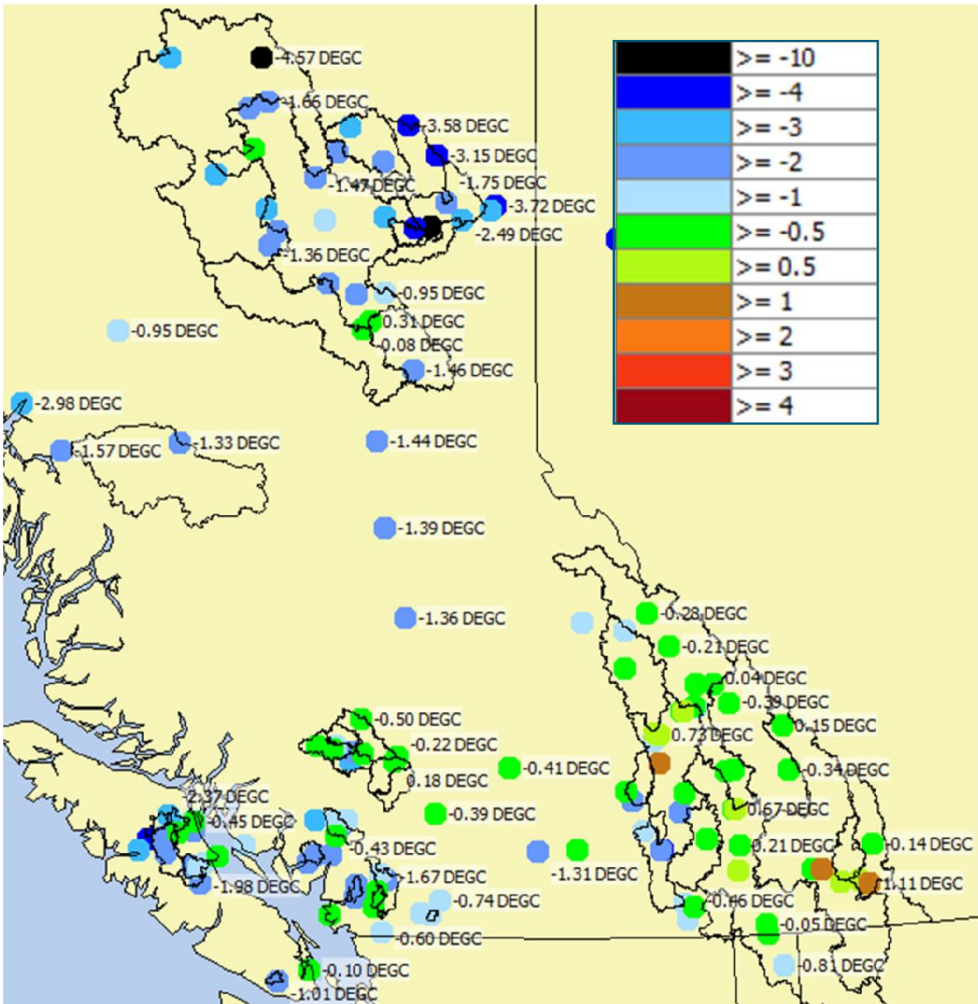


March Weather

Precipitation (% of normal)

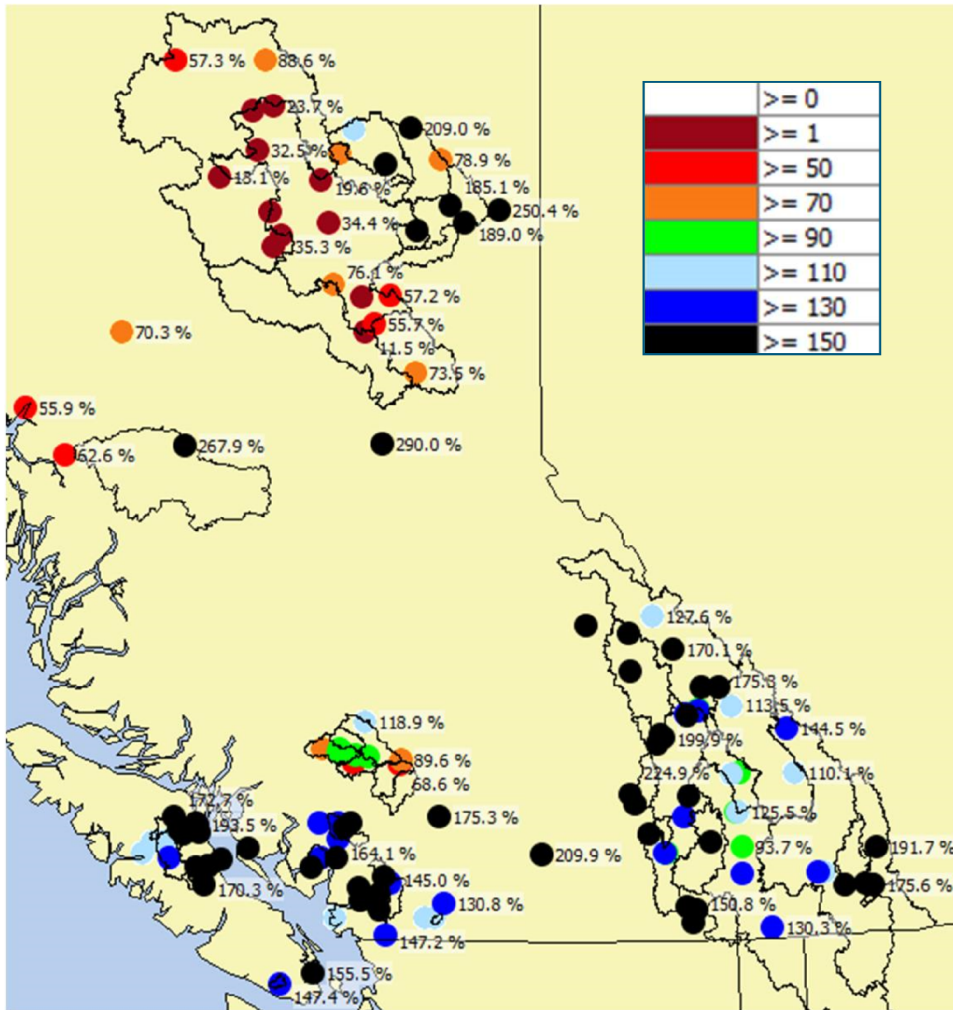


Temperature (deviation from normal)

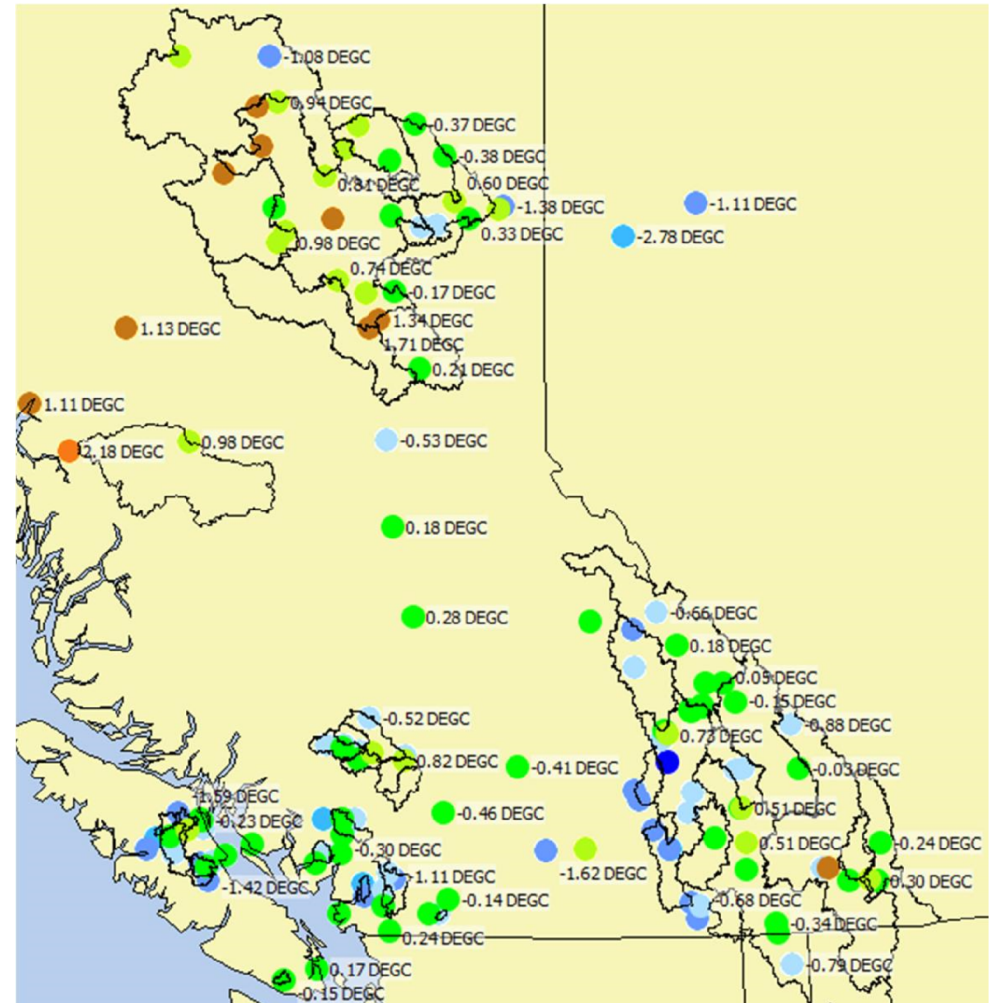


April Weather

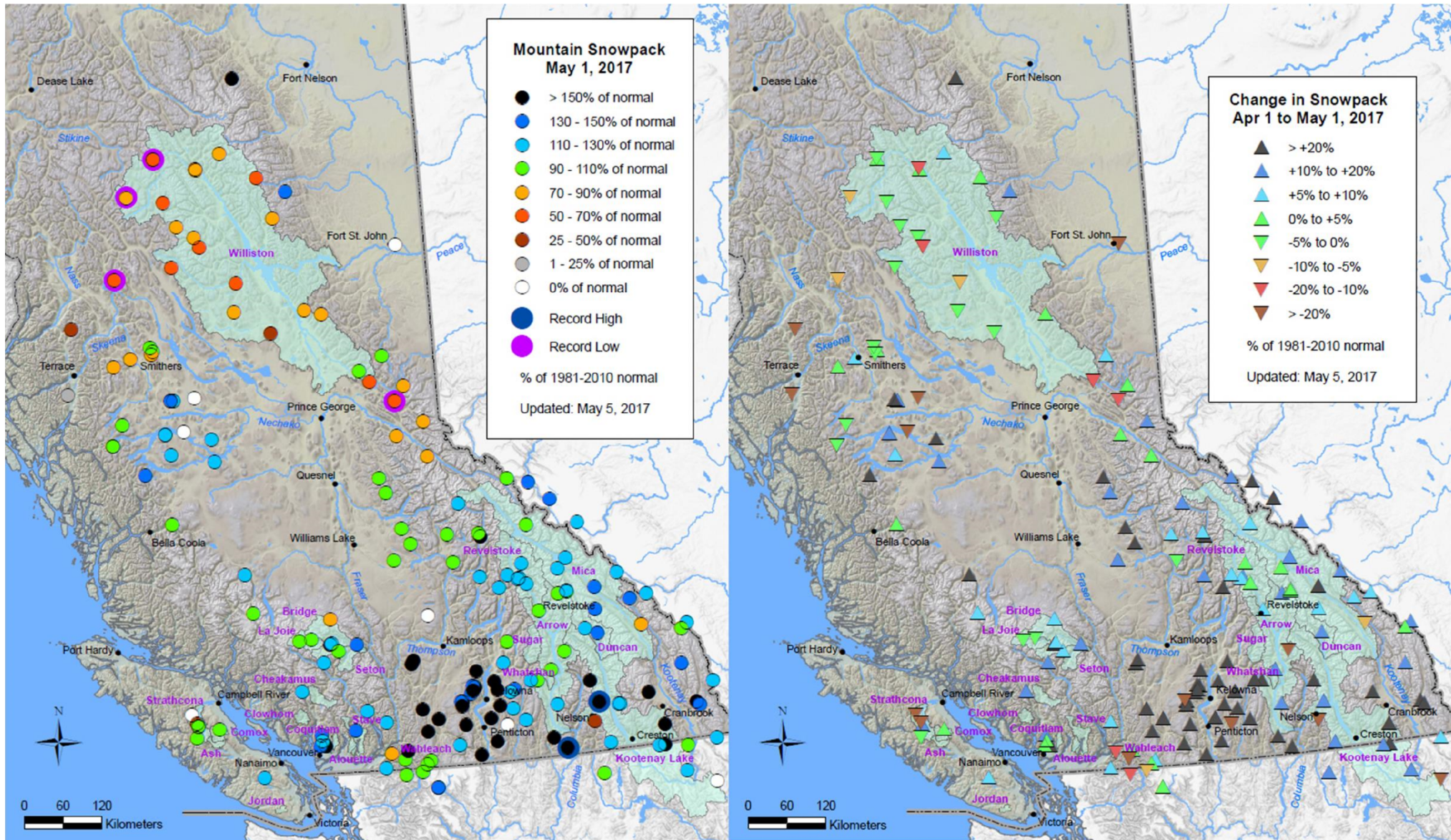
Precipitation (% of normal)



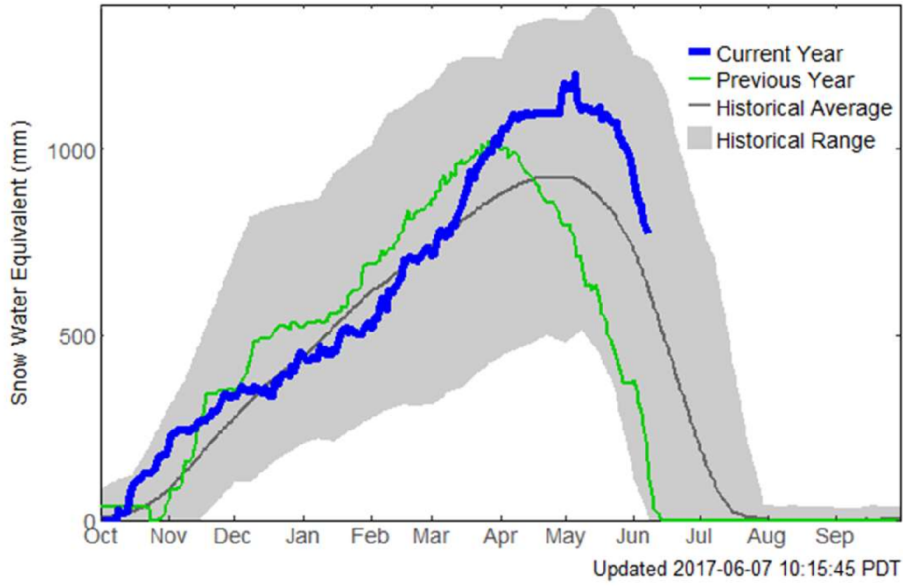
Temperature (deviation from normal)



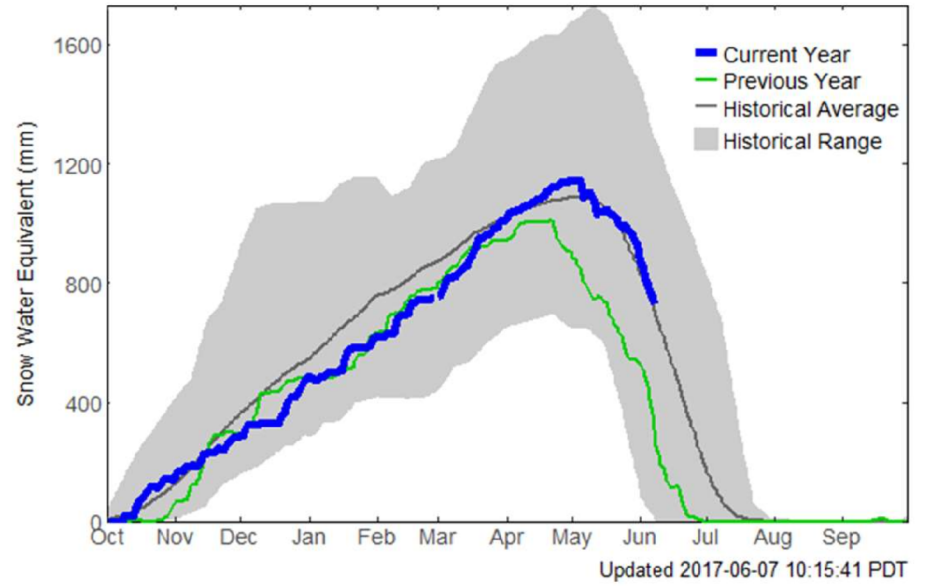
May 1st Snowpack (% of normal)



Mountain Snowpack - Columbia



East Creek



Molson Creek

Water Year 2017

Mica Daily Inflow Hydrograph

Water Year 2017

Updated 17-Oct-2017 08:46:40

