



Fact Sheet

December 2010

Big Eddy-Knight Transmission Project Update

Draft environmental impact statement available for review

BPA is proposing to construct a 500-kilovolt lattice-steel tower transmission line from our existing Big Eddy Substation in The Dalles, Ore., to a proposed new Knight Substation about four miles northwest of Goldendale, Wash. We have completed a draft environmental impact statement for the project based on research, field review and public comment. We are asking for your comments on the draft EIS and invite you to public meetings. Your comments on the draft EIS will help us refine our environmental analysis. Please note that comments are due by Jan. 28, 2011.

Draft EIS

The draft EIS is a comprehensive document that explains the need for BPA to take action, describes the alternatives being considered in detail, as well as alternatives considered but eliminated from detailed study. The draft EIS also discusses the potential environmental impacts by alternative, and lists the mitigation measures that would lessen or eliminate those impacts.

Impacts to various resources were determined based on the footprint of transmission towers, access roads and Knight Substation. Impacts were also evaluated for construction areas and right-of-way easements, as well as long-term maintenance and operation of the project. Impacts are disclosed for the following resources:

- **Land use** – How the line could impact agricultural use, near-by residents, parks and conservation lands.
- **Visual** – How the line, roads and substation would affect views within the Columbia River Gorge National Scenic Area, and from homes and other sites in the rural environment, including views of Mt. Hood and Mt. Adams.
- **Vegetation** – Where the project would require the removal of or disturbance to trees, special-status plants and common vegetation communities and how the project could potentially introduce or spread noxious weeds.
- **Soils and Geology** – How the project would disturb soils, cause erosion and cross possible landslide areas.
- **Water Resources and Wetlands** – How sediment or shading water could affect streams and rivers crossed, and whether and where wetlands could potentially be filled.
- **Wildlife** – Where and how wildlife and their habitats could be disturbed and affected.
- **Fish** – How impacts to water bodies could affect fish.
- **Cultural Resources** – How possible historic or cultural sites along the project could be impacted.
- **Socioeconomics** – How having a new line in the area could have social effects, and what economic impacts could occur from construction jobs and spending, taxes, land use changes and property values.
- **Transportation** – What impacts would occur to the existing road system and from proposed access roads for the project.
- **Noise** – What noise levels would be generated during construction and line and substation operation.
- **Public Health and Safety** – A description of safety issues during construction, the potential for electric shocks and electric and magnetic field effects.



- **Air Quality** – How the generation of emissions and dust could impact air quality.
- **Greenhouse gases** – What emissions could contribute to greenhouse gases.
- **Cumulative Impacts** – How potential project impacts could add to other past, present and future impacts to various resources.

The EIS also describes the project’s consistency with federal, state, regional and local regulations and with the National Scenic Area Management Plan.

The draft EIS is available online at www.bpa.gov/go/BEK.

Project description

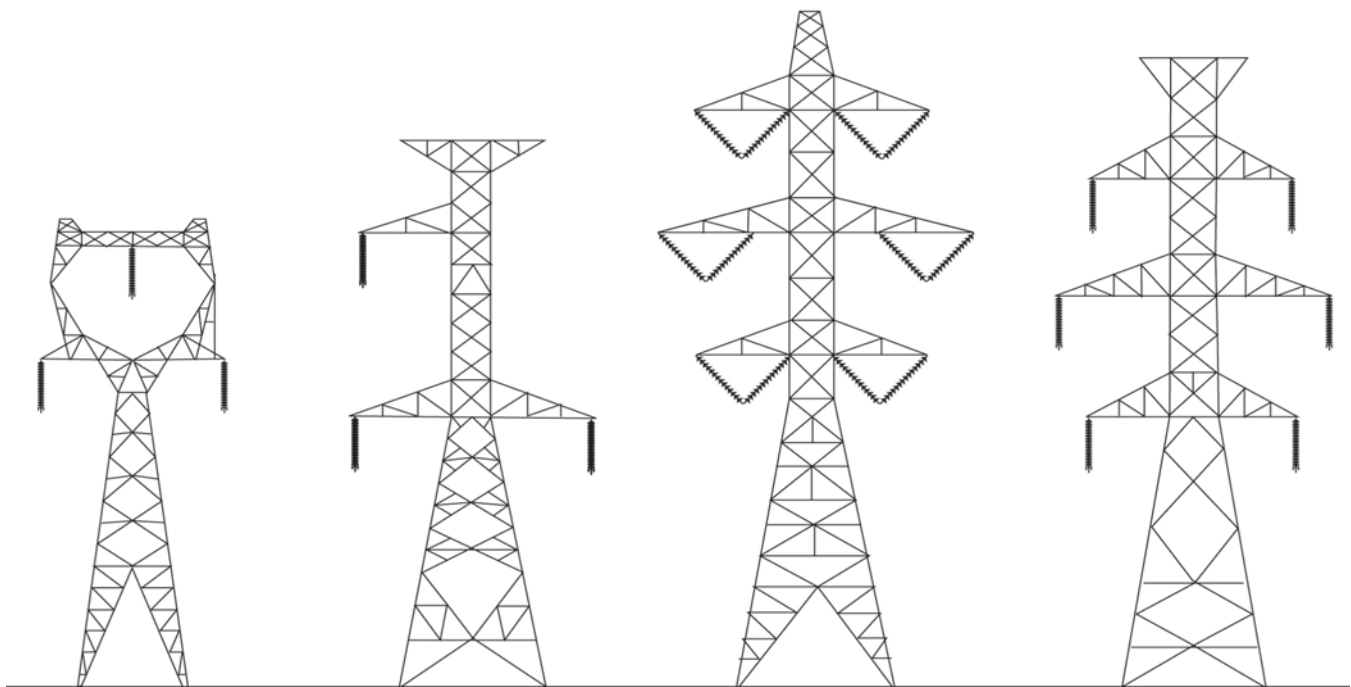
The proposed project is needed to increase the electrical capacity of the BPA transmission system so we can respond to requests for transmission service in the region. The project includes a new transmission line, substation facilities, and a fiber optic cable (see map). BPA is proposing three transmission line routes:

the West Alternative, Middle Alternative, and East Alternative, as well as the option to not build the line (the No Action Alternative).

All transmission line routes would begin at BPA’s existing Big Eddy Substation. Additional equipment would be installed within the fenced substation yard. All routing alternatives would be approximately 28 miles long. Each proposes to use a combination of existing BPA transmission line right-of-way and new 150-foot wide right-of-way. Each alternative would cross the Columbia River and the Columbia River Gorge National Scenic Area, and would end at one of the proposed Knight Substation sites.

Where the proposed alternatives would parallel existing lines, there are options to build the proposed line adjacent to existing lines using single-circuit towers or to tear down existing lines and build double-circuit towers that could carry both lines. In general, single-circuit 500-kilovolt towers would be between 105 and 205 feet tall (depending on terrain). Double-circuit towers are about 50 feet taller than the single-circuit

Proposed Tower Types



Single-Circuit Suspension
Height 105’ to 205’
Average span 1150’

Single-Circuit Dead-End
Height 120’ to 200’
Average span 1150’

Double-Circuit Suspension
Height 170’ to 250’
Average span 1150’

Double-Circuit Dead-End
Height 160’ to 220’
Average span 1150’

towers, and would range from 170 to 250 feet tall. Tower heights would vary depending on the terrain, need for road and river crossings and other factors.

Two sites are being considered for the proposed new Knight Substation, which would require about 30 acres, with the fenced electrical yard covering about 10 acres. The sites are next to each other along BPA's existing Wautoma-Ostrander transmission line (see map). Site 1 is the most western site and is on private land. Site 2 is next to Site 1 and is on Washington Department of Natural Resources land.

BPA is considering two options for a fiber optic cable that would be required for communication between Big Eddy and Knight substations. A Loop Back Option would string fiber optic cable on the proposed transmission line towers from Big Eddy Substation to Knight Substation then loop back to Big Eddy Substation on the same towers. A Wautoma Option would follow the same route to Knight Substation but then continue an additional 72 miles on an existing BPA line through Yakima County, Wash., to BPA's Wautoma Substation in northwest Benton County (see map).

BPA's preferred alternative

The East Alternative is BPA's preferred alternative for the project. It proposes to use double-circuit towers where the line will be parallel to existing lines, Substation Site 1 and the Wautoma fiber optic cable option. Although these project components are preferred, we have not made a final decision. BPA will announce its final decision in a Record of Decision, expected in summer 2011.

Public meetings

We are hosting two open-house style meetings for the public to share their views about this proposed project:

The Dalles, Ore. – Tuesday, Jan. 11, 2011, 4 p.m. to 7 p.m., at the Shilo Inn Suites Hotel, 3223 Bret Clodfelter Way, The Dalles, Ore. 97058

Goldendale, Wash. – Wednesday, Jan. 12, 2011, 4 p.m. to 7 p.m., at the Goldendale High School, 525 E. Simcoe Drive, Goldendale, Wash. 98620

Project team members will be available to take your comments on the draft EIS and answer any questions you may have. You may stop by anytime during the open houses.

In case of severe weather, please call 800-622-4519 to ensure the meeting has not been cancelled and rescheduled.

How to comment

We invite your comments on the draft EIS. Please note that comments are due by Jan. 28, 2011.

Environmental Impact Statement Schedule

Winter 2010 - 2011

BPA issues draft EIS for public review and comment

January 11 and 12, 2011

BPA holds public meetings to receive comments on the draft EIS

January 28, 2011

Comments due for draft EIS

Early Summer 2011

BPA issues final EIS

Late Summer 2011

BPA issues Record of Decision announcing agency decision

Comments can be submitted online at: www.bpa.gov/comment; faxed to 503-230-3285; mailed to BPA's Public Affairs Office - DKE-7, P.O. Box 14428, Portland, OR, 97293-4428; or submitted via telephone toll-free at 800-622-4519. We will post a link to all comments we receive on the project Web site at www.bpa.gov/go/BEK.

If you received this factsheet in the mail, you are on our mailing list. If you would like to be added to the mail list, please call us toll-free at 800-622-4519 and leave your name, address and other contact information so we can include you in future mailings.

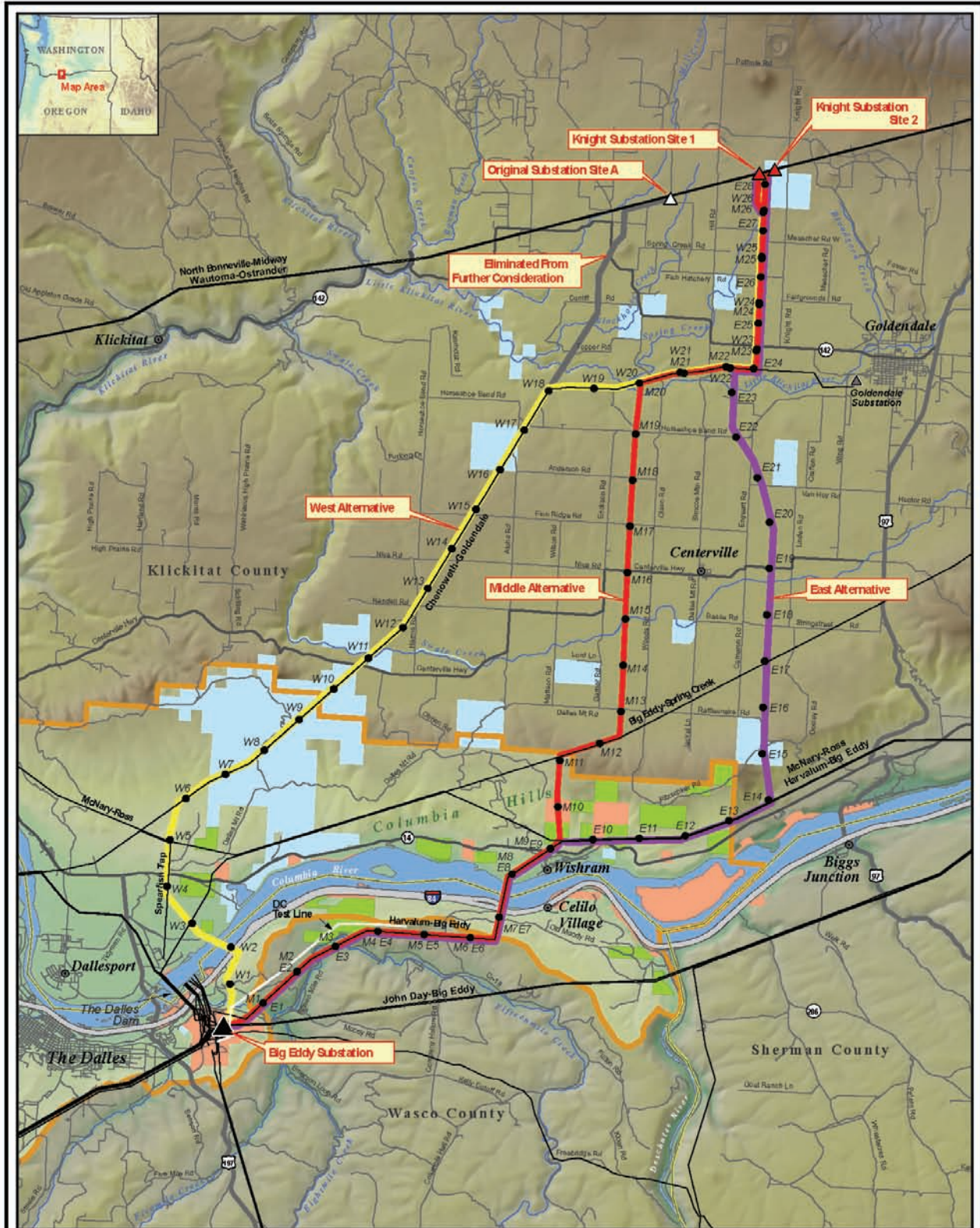
Please be sure to reference "Big Eddy-Knight Transmission Project" in all communications.

Next steps

We will consider all comments submitted during the comment period. We will also continue to work with the Washington Energy Facility Siting Council and the

Big Eddy-Knight Transmission Project Map

Wasco County, Ore. and Klickitat County, Wash.



Existing Facilities

- ▲ BPA Big Eddy Substation
- ▲ Non-BPA Substation
- BPA Transmission Lines

Proposed Facilities

- West Alternative
- Middle Alternative
- East Alternative
- Eliminated From Further Consideration
- ▲ Knight Substation Sites
- ▲ Original Substation Site A
- Line Mile Markers

Columbia River Gorge National Scenic Area

- Federal
- State
- Tribal Trust
- County Boundary



Oregon Department of Energy, as well as with other federal, state, regional and local agencies, tribes, landowners and interest groups.

All comments and our responses to comments will be published in the final EIS. The final EIS will also include any changes to our proposal or analysis. BPA expects to complete and publish the final EIS in early summer 2011 and then issue a record of decision in late summer 2011 that will explain BPA's decision about whether to build the project.

Additional contact information

Stacy Mason, Environmental Coordinator, Bonneville Power Administration – KEC-4, P.O. Box 3621, Portland, OR 97208-3621; toll-free telephone 800-282-3713; direct telephone 503-230-5455; or e-mail slmason@bpa.gov.

Steve Prickett, Project Manager, Bonneville Power Administration – TNP-3, P.O. Box 61409, Vancouver, WA 98666-1409; toll-free telephone 800-282-3713; direct telephone 360-619-6379; or e-mail sprickett@bpa.gov.

Shelley Fenton, Realty Specialist, Bonneville Power Administration – TERR-3, P.O. Box 3621, Portland, OR 97208-3621; toll-free telephone 800-282-3713; direct telephone 503-230-4797; or e-mail snfenton@bpa.gov.

Big Eddy-Knight Fiber Optic Cable Overview Map

Wasco County, Ore. and Klickitat County, Wash.

