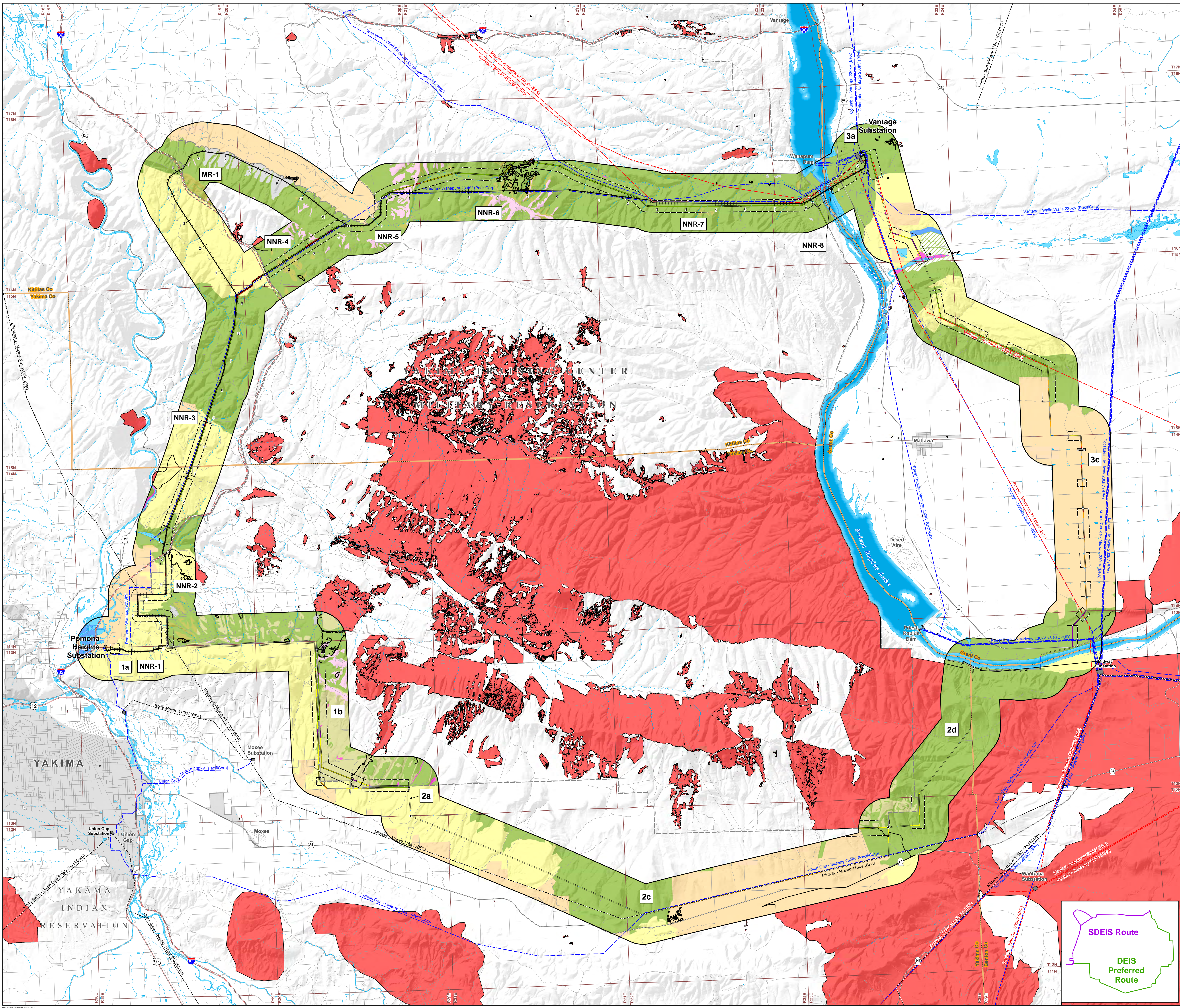
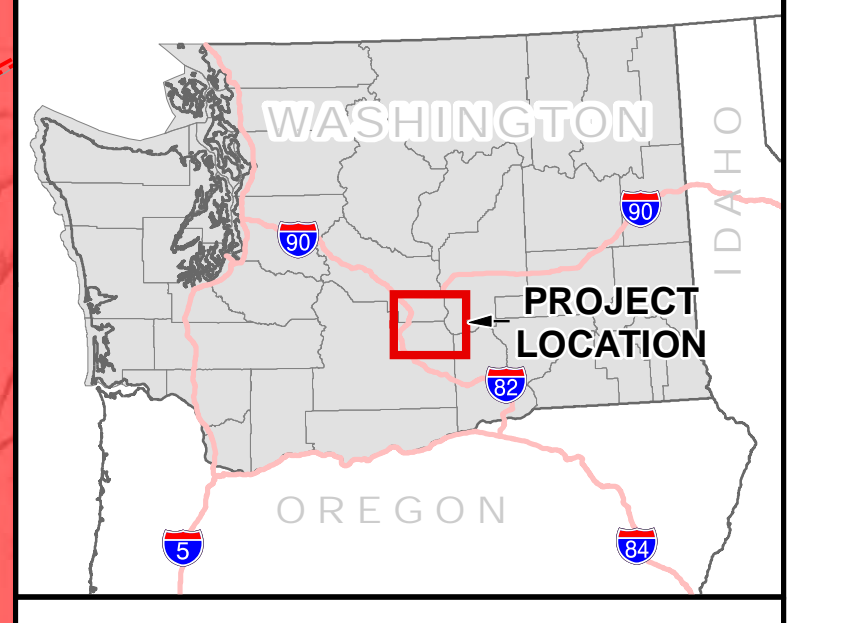


Vegetation & Fire History



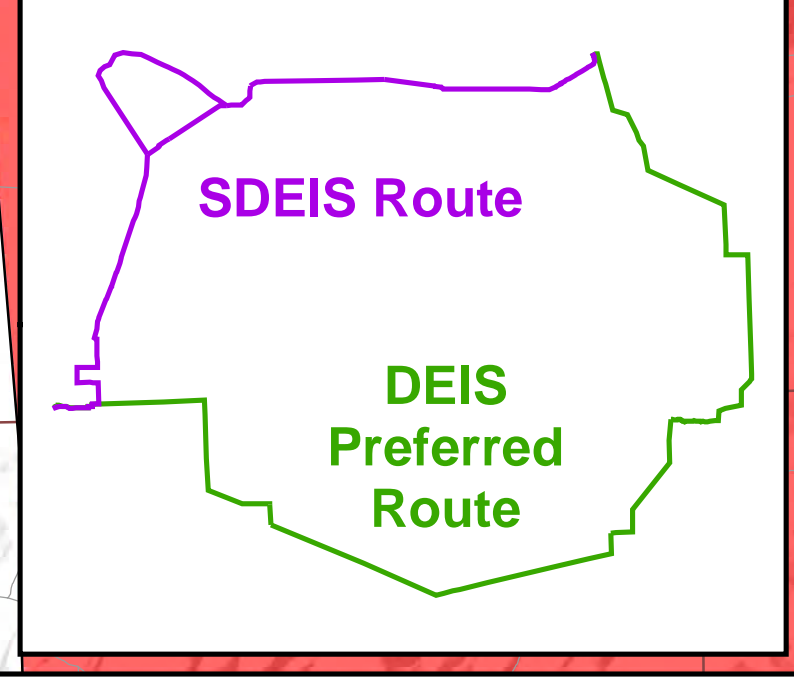
- Legend**
- Route Features**
- Route Node
 - Alternative Route
 - Study Corridor (2 miles)
- Vegetation**
- GAP Analysis**
- Agriculture
 - Annual Grassland
 - Riparian
 - Sagebrush - Perennial Grassland
 - Sagebrush - Annual Grassland
 - Water
- YTC Vegetation**
- Disturbed
 - Forb
 - Perennial Grassland
 - Riparian
 - Sagebrush - Perennial Grassland
- POWER Vegetation:** Interpreted within 160 feet corridor from field work and aerial photography.
- General location of botanical right-of-way survey completed on federal lands
 - Agriculture
 - Annual Grassland
 - Basalt Cliffs or Rock
 - Disturbed or Developed
 - Intermittent Stream or gully
 - Grassland
 - Noxious Weeds
 - Perennial Grassland
 - Rabbitbrush - Annual Grassland
 - Riparian
 - Sagebrush - Annual Grassland
 - Sagebrush - Perennial Grassland
 - Shrubs
 - Trees
 - Water
- Fire History**
- Fire Data 1987-2012
 - Inside Corridor/Outside Corridor
- Existing Transmission Facilities**
- 500kV Transmission Line
 - 230kV Transmission Line
 - 115kV Transmission Line
- Substation**
- Substation
- Boundaries**
- County
 - Township
 - City Boundary
 - Yakima Training Center
- Transportation**
- Interstate Highway
 - US Highway
 - State Route
 - Local Access Road
- Water Features**
- River or Perennial Stream
 - Open Water



Data are projected in UTM Zone 10N, NAD83

0 0.5 1 2 3 Miles

PACIFIC POWER & LIGHT **POWER ENGINEERS**



Visual Resources

Legend

Route Features

- Route Node
- Alternative Route
- Study Corridor (6 miles)

Visual Resources

- Interim BLM VRM Class III

Sensitive Viewers

- High Sensitivity - Residence
- High Sensitivity
- Moderate Sensitivity

Key Observation Points (KOP) and Inventory

KOPs

- High Sensitivity
- Moderate Sensitivity
- Inventory Observation Point (IOP)

Scenic Quality

- A
- B
- C

Development Character Areas

- Industrial/Utility
- Developed Parkland
- Agriculture
- Residential

Existing Transmission Facilities

- 500kV Transmission Line
- 230kV Transmission Line
- 115kV Transmission Line
- Substation

Boundaries

- County
- Township
- City Boundary
- Yakima Training Center

Transportation

- Interstate Highway
- US Highway
- State Highway
- Local Access Road

Water Features

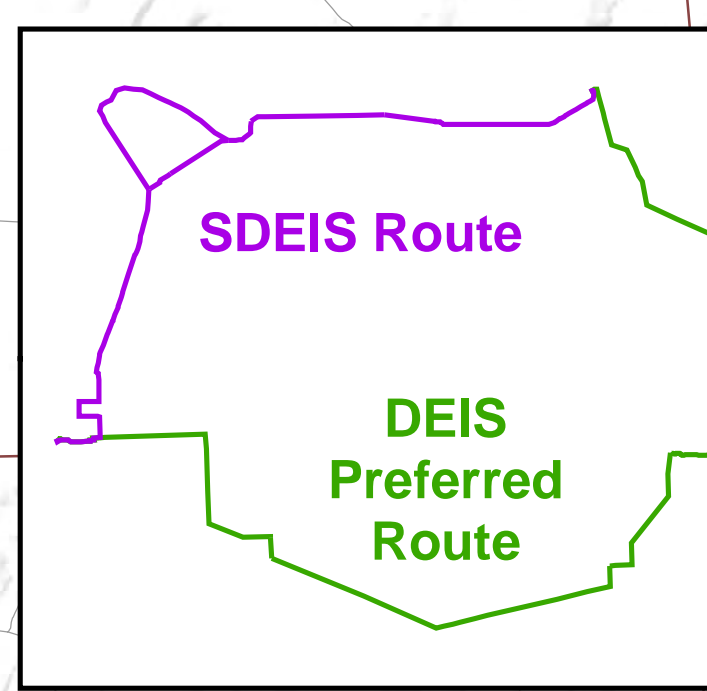
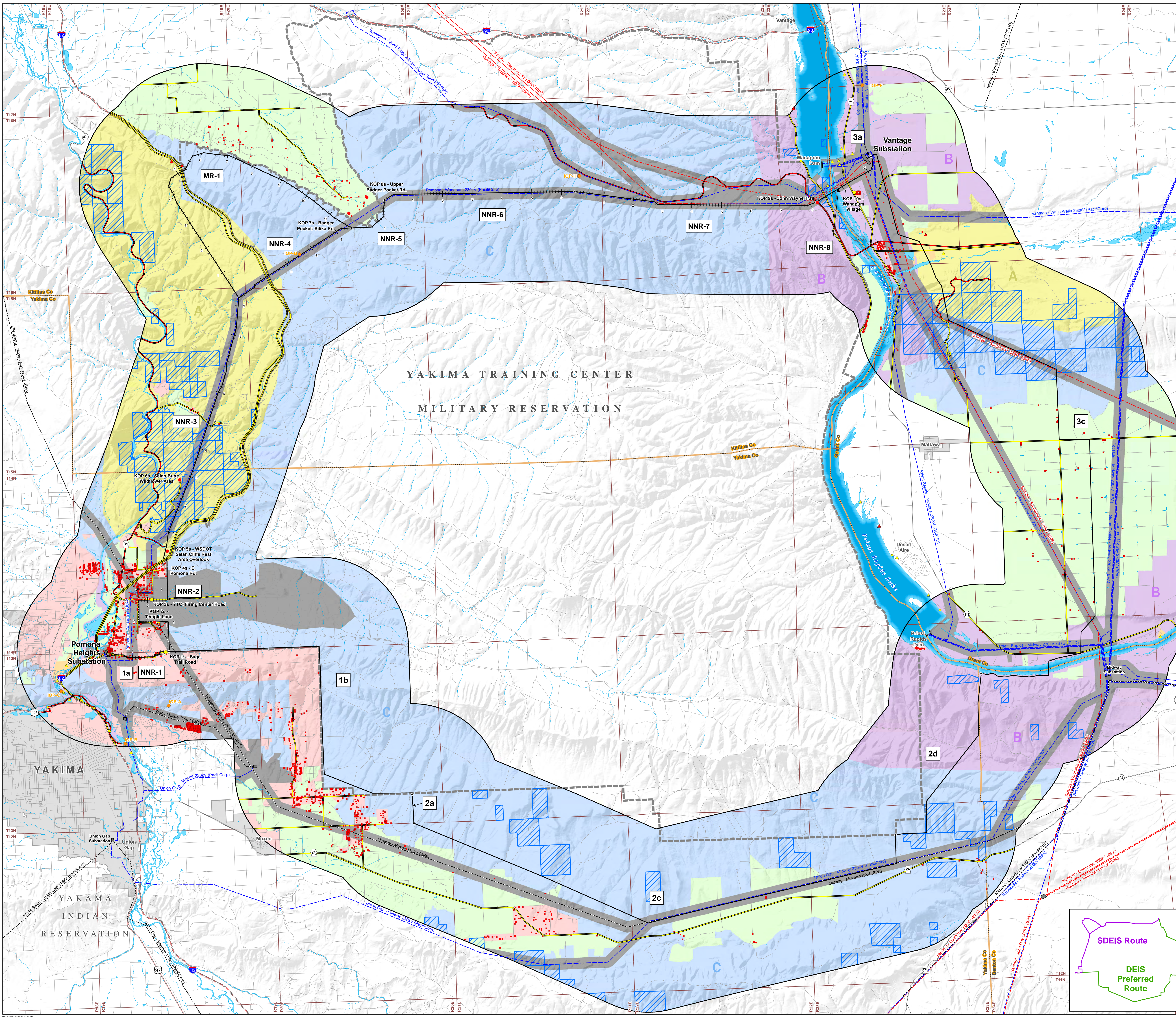
- River or Perennial Stream
- Open Water



Data are projected in UTM Zone 10N, NAD83

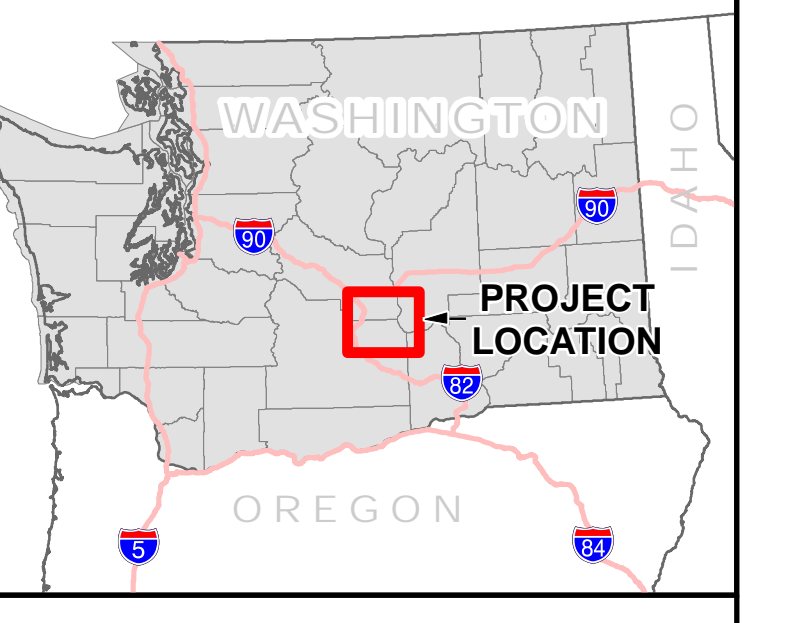


0 0.5 1 2 3 Miles



Water Resources and Wetlands

- Legend**
- Route Features**
- Route Node
 - Alternative Route
 - Study Corridor (2 miles)
- National Wetland Inventory**
- Freshwater Emergent Wetland
 - Freshwater Forested or Shrub Wetland
 - Freshwater Pond
 - Lake
 - Riverine
- National Hydrography Dataset**
- Intermittent Stream
 - Perennial Stream or River
 - Canal or Ditch
 - Pipeline
- State Hydrological Boundaries**
- Water Resource Inventory Area
 - Adopted Shoreline Boundary
 - Dam
- FEMA Flood Data**
- 100 year Floodplain
 - 500 year Floodplain
 - Area protected by levee
- Existing Transmission Facilities**
- 500kV Transmission Line
 - 230kV Transmission Line
 - 115kV Transmission Line
- Boundaries**
- County
 - Township
 - City Boundary
 - Yakima Training Center
- Transportation**
- Interstate Highway
 - US Highway
 - State Route
 - Local Access Road

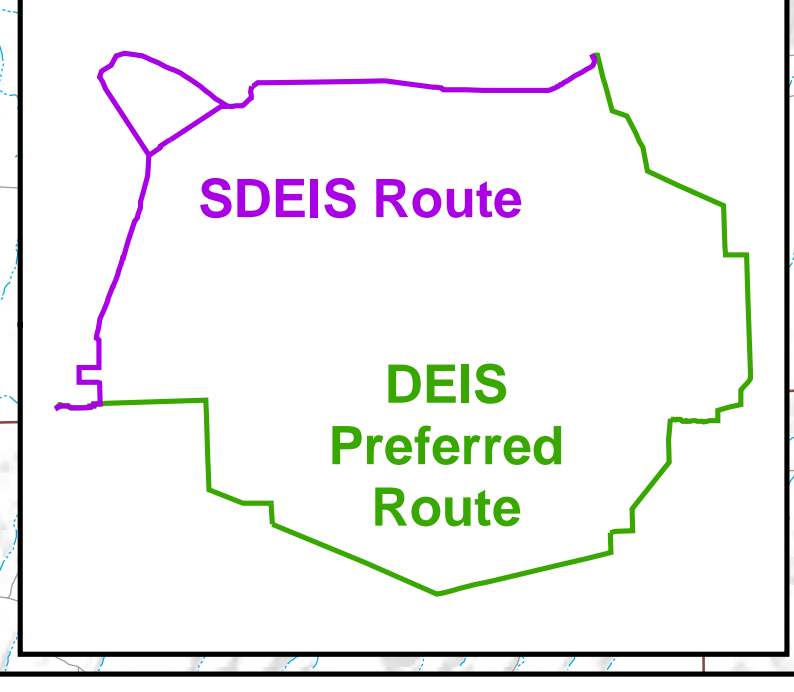
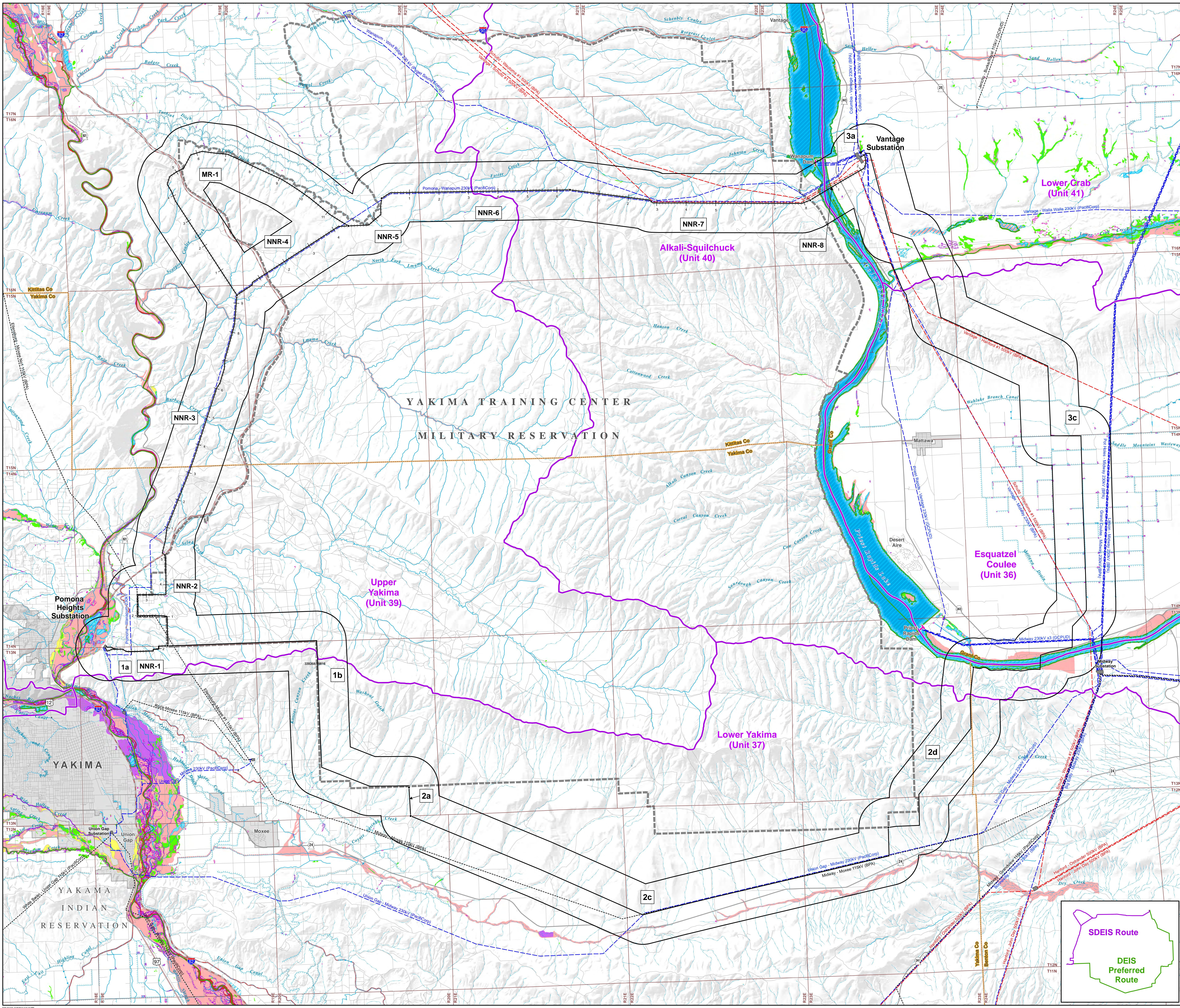


Date are projected in UTM Zone 10N, NAD83

0 0.5 1 2 3 Miles

PACIFIC POWER & LIGHT
A DIVISION OF PACIFICORP

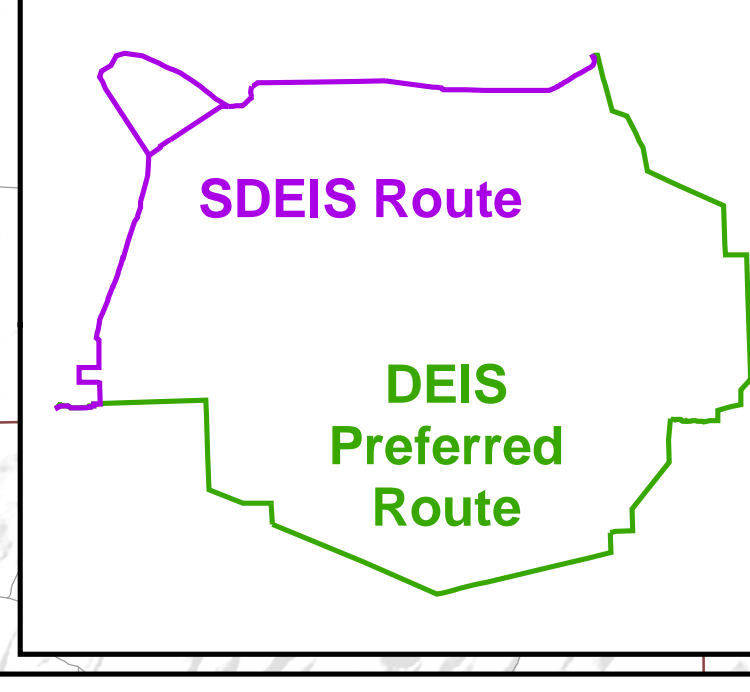
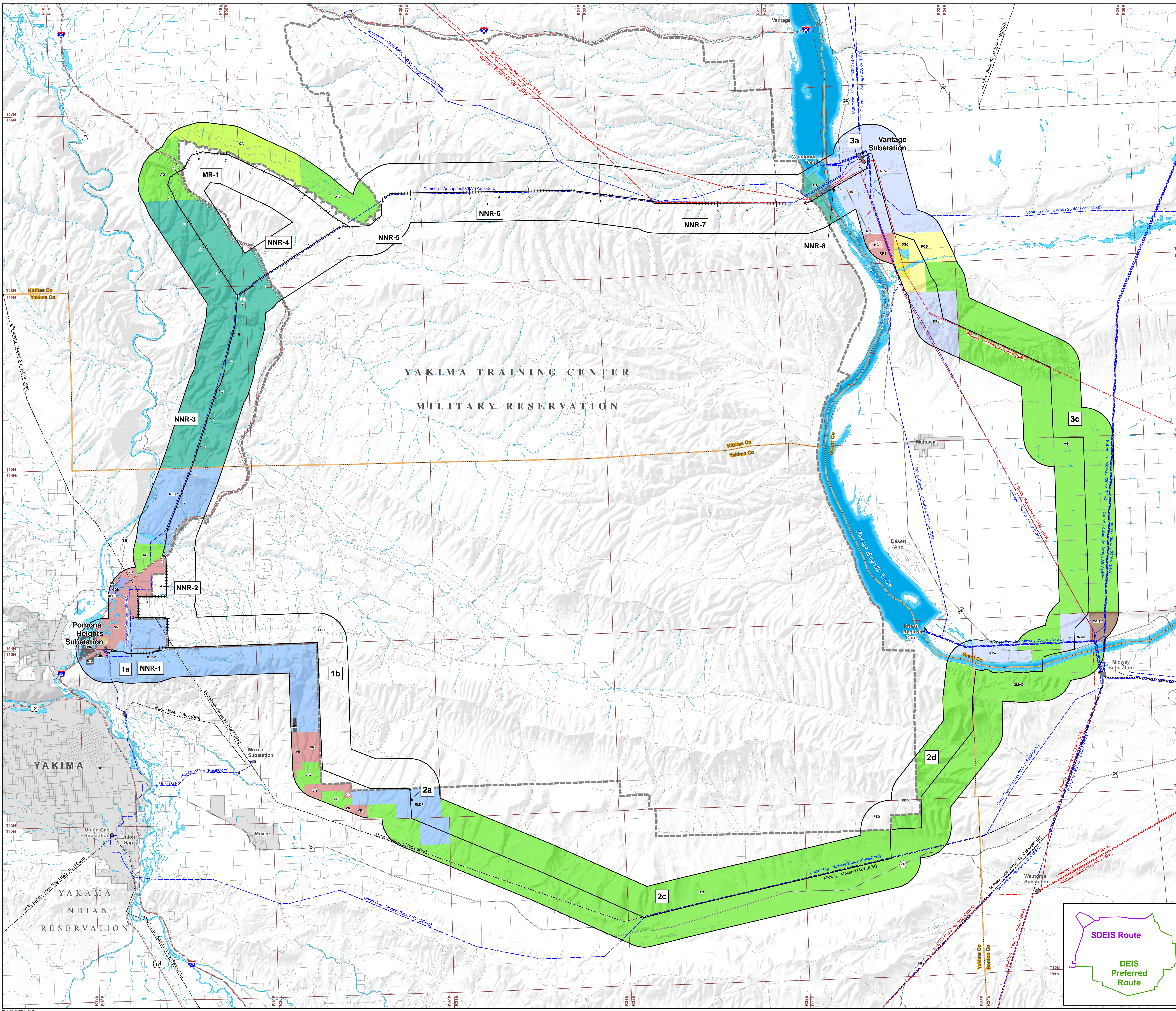
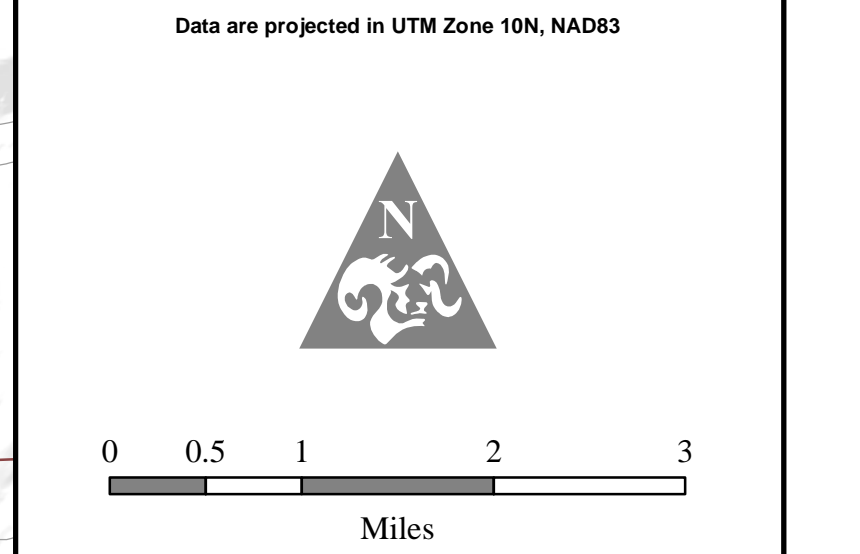
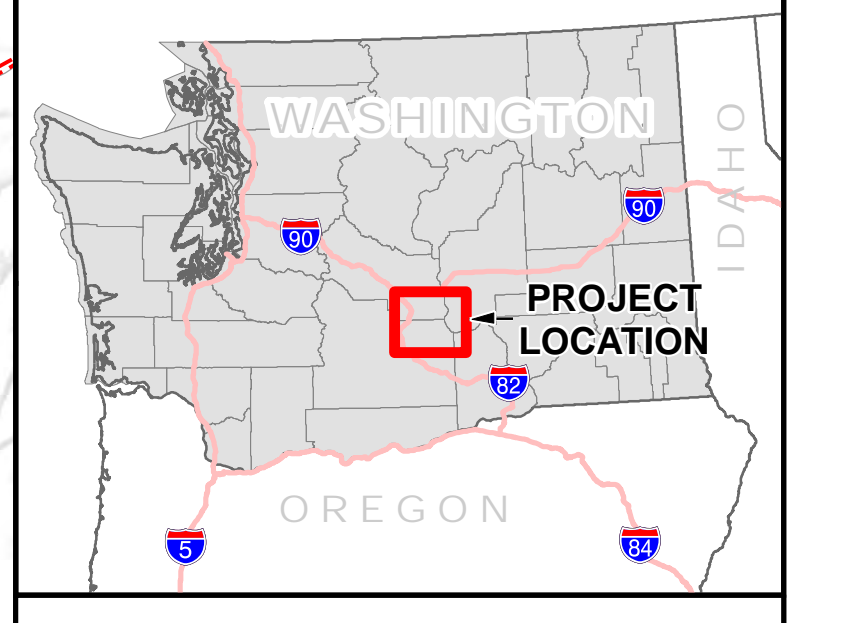
POWER ENGINEERS

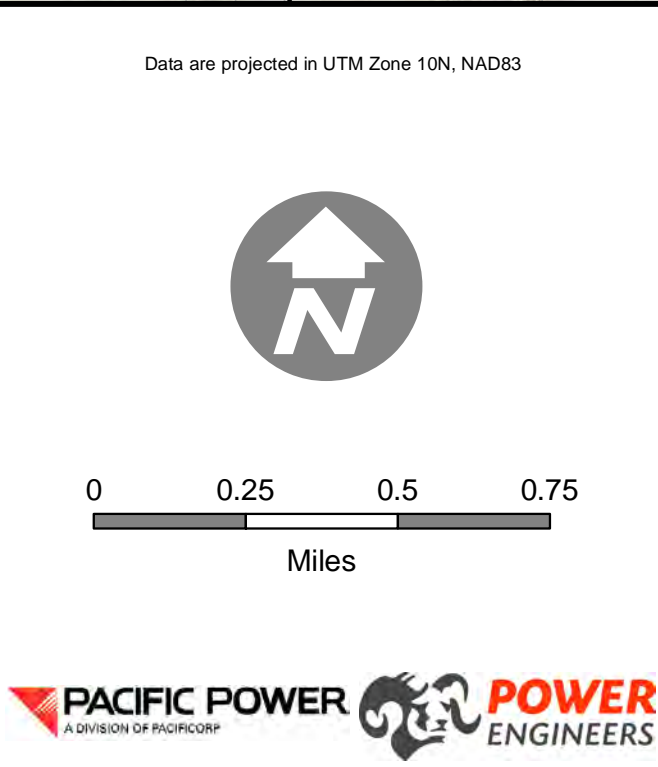
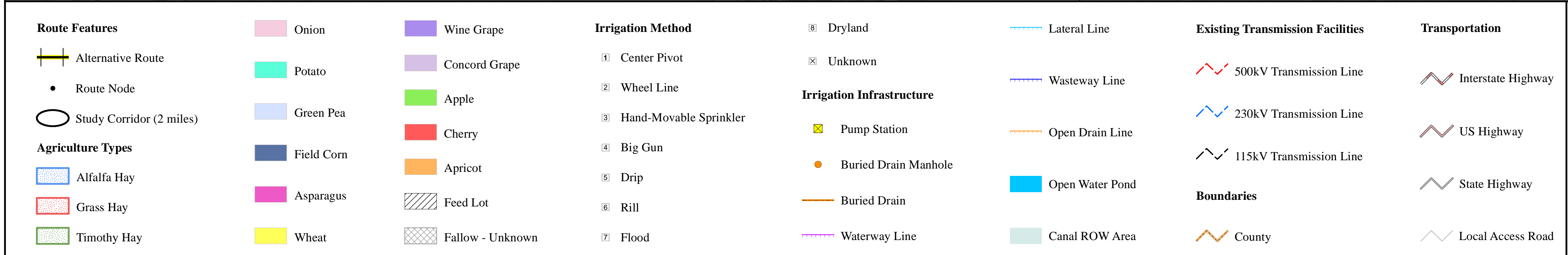
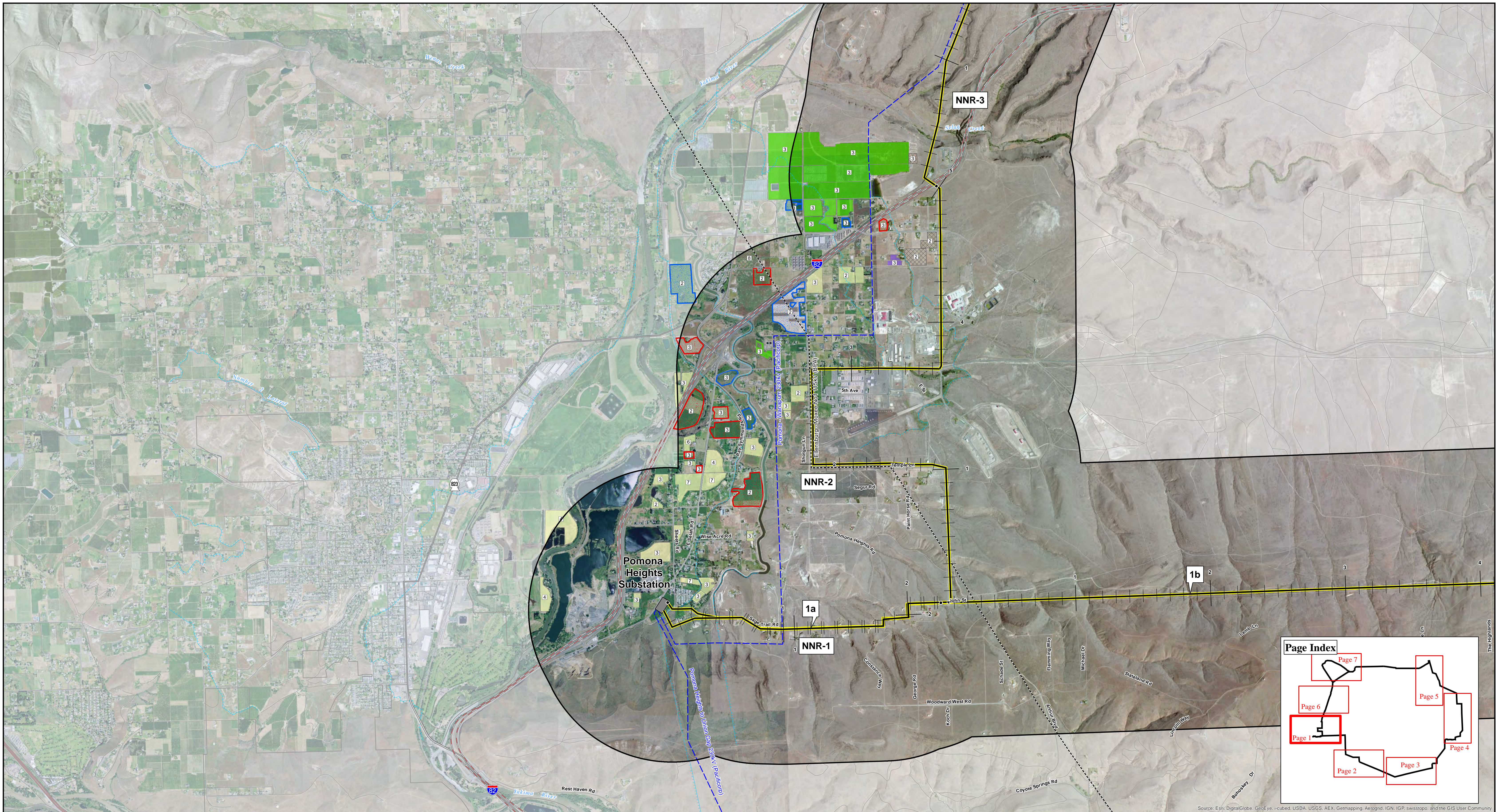


Small text at the bottom left corner, likely containing project metadata or disclaimer information.

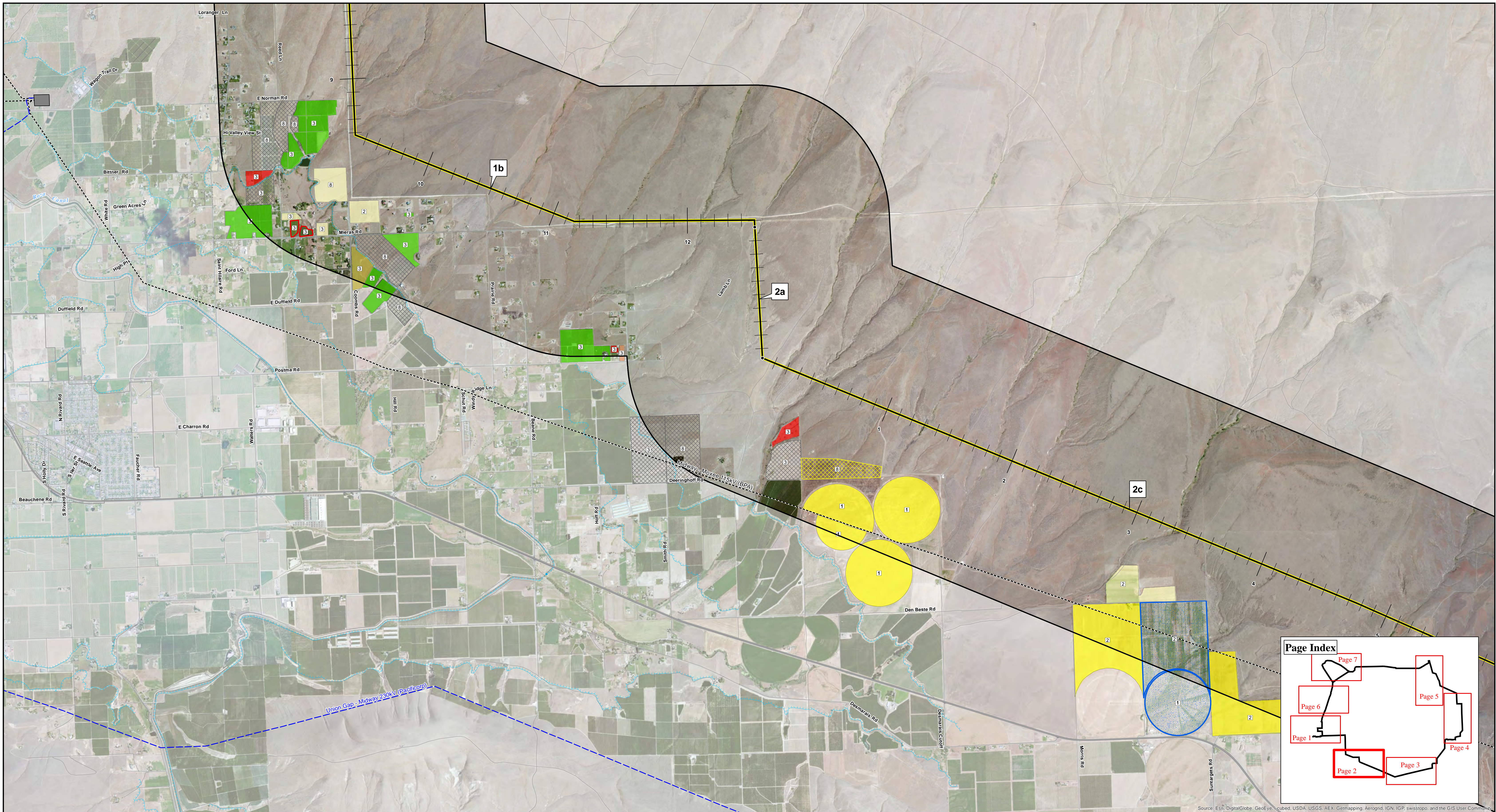
Zoning

- Legend**
- Route Features**
- Route Node
 - Alternative Route
 - Study Corridor (2 miles)
- Zoning by County**
- Benton County Zoning**
- Growth Management Act Agricultural District (GMAD)
- Grant County**
- Zones**
- Agriculture (AG)
 - Open Space Conservation (OSC)
 - Public Open Space (POS)
 - Rural Community (RC)
 - Rural Light Industrial (RLI)
 - Rural Remote (RRem)
 - Rural Residential 3 (RR3)
- Other**
- Wahluke SubArea Plan (WSAP)
- Kittitas County**
- Zones**
- Agriculture (AG)
 - Commercial Agriculture (CA)
 - Forest & Range (F-R)
- Yakima County Zoning**
- Zones**
- Agriculture (AG)
 - Industrial (I)
 - Mining (MIN)
 - Remote/Extremely Limited Development Potential (RLDP)
 - Valley Rural (VR)
- Existing Transmission Facilities**
- 500kV Transmission Line
 - 230kV Transmission Line
 - 115kV Transmission Line
- Substation**
- Boundaries**
- County
 - Township
 - City Boundary
 - Yakima Training Center
- Transportation**
- Interstate Highway
 - US Highway
 - State Route
 - Local Access Road
- Water Features**
- River or Perennial Stream
 - Open Water





File Saved: 1/30/24 4:23:21 PM
Path: W:\114809_VantagePomona\PER\Environmental\GIS\Appendix\Agriculture_Irrigation_MB.mxd



Route Features Alternative Route Route Node Study Corridor (2 miles)	Agriculture Types Alfalfa Hay Grass Hay Hops	Route Features Wheat Apple Pear Cherry Nectarine/Peach Pasture Fallow - Wheat Fallow - Unknown	Irrigation Method Center Pivot Wheel Line Hand-Movable Sprinkler Big Gun Drip Rill Flood	Irrigation Infrastructure Pump Station Buried Drain Manhole Buried Drain Waterway Line	Irrigation Infrastructure Lateral Line Wasteway Line Open Drain Line Open Water Pond Canal ROW Area	Existing Transmission Facilities 500kV Transmission Line 230kV Transmission Line 115kV Transmission Line	Boundaries County	Transportation Interstate Highway US Highway State Highway Local Access Road
--	--	---	--	---	---	--	-----------------------------	---

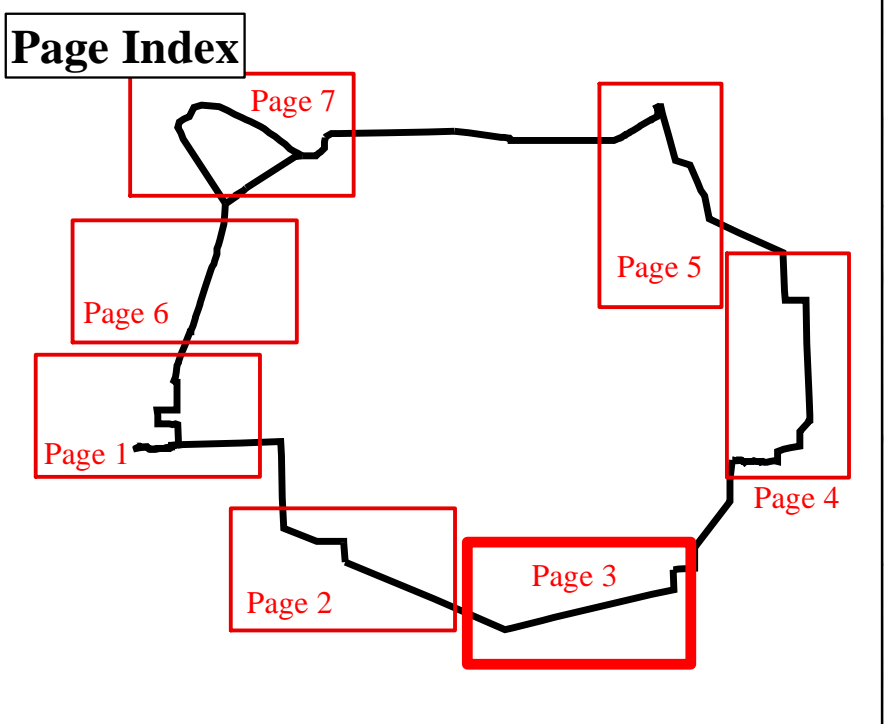
Data are projected in UTM Zone 10N, NAD83

PACIFIC POWER & LIGHT
A DIVISION OF PGE

POWER ENGINEERS

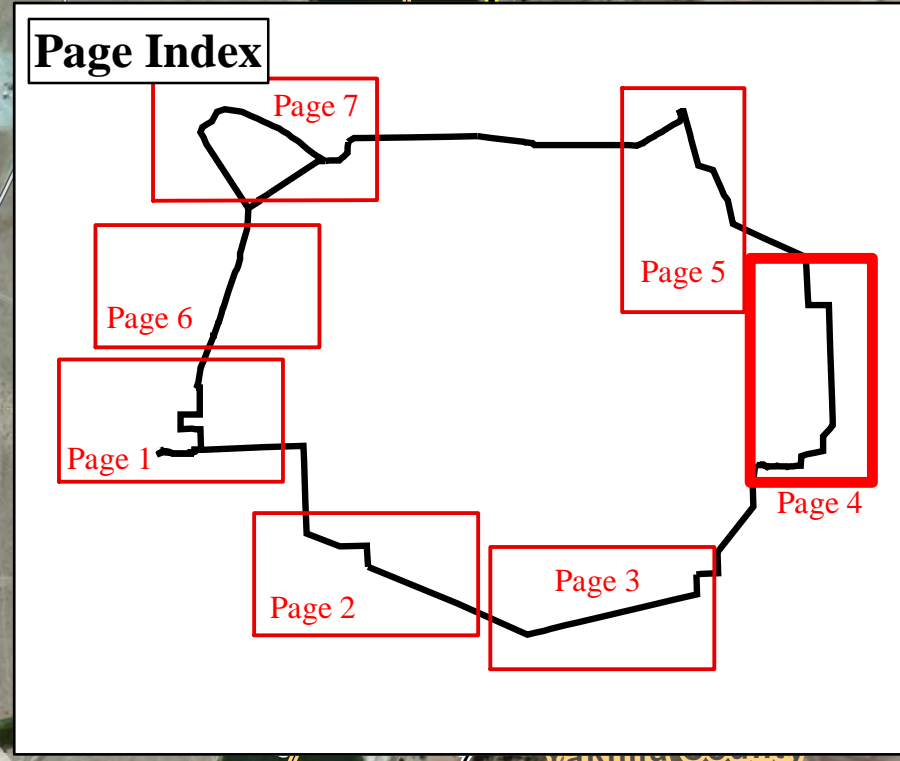
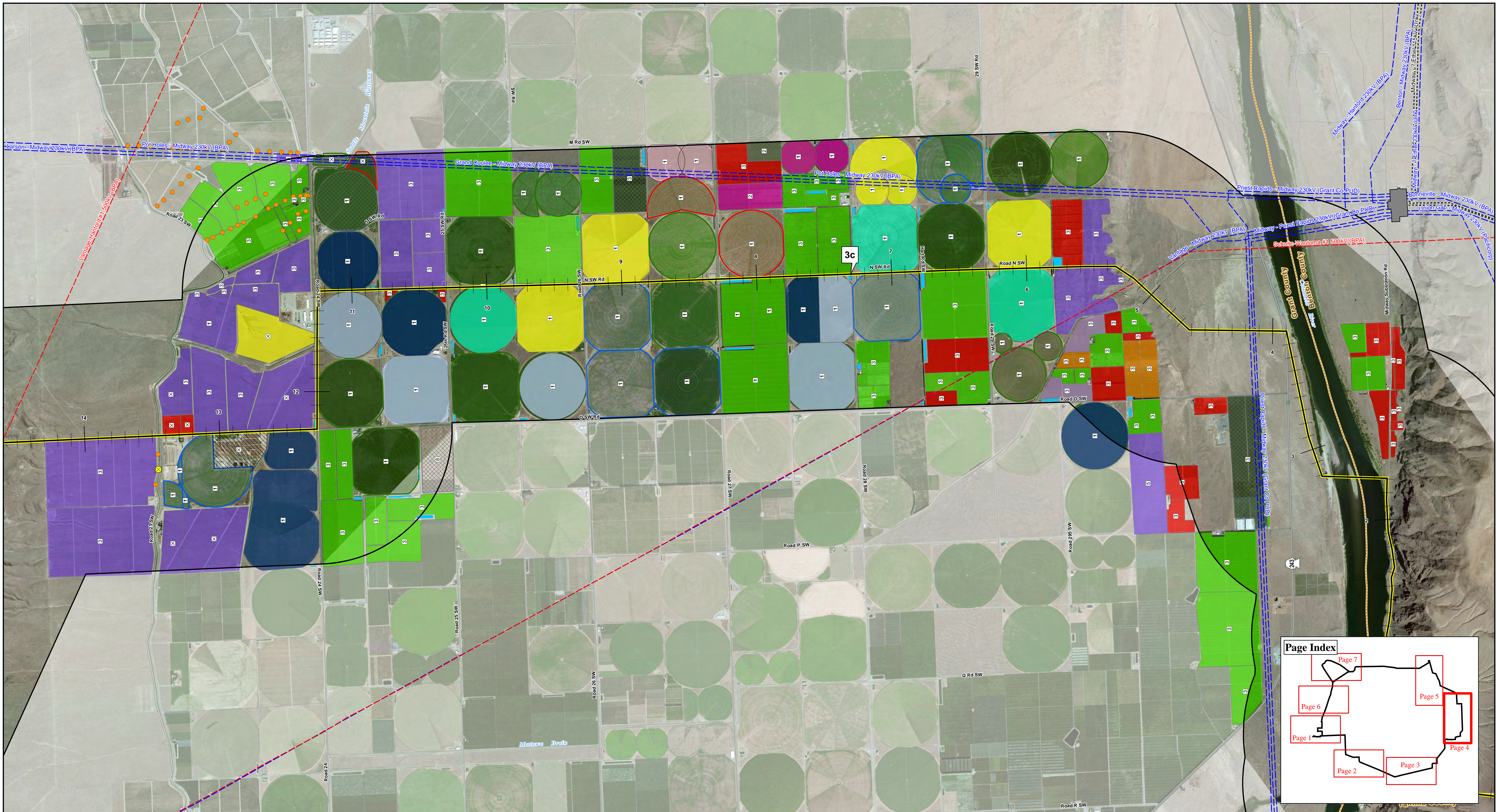


File Saved: 1/20/24 4:23:21 PM
Path: W:\114809_VantagePomona\PER\Environmental\GIS\Appendix\Agriculture_Irrigation_MB.mxd

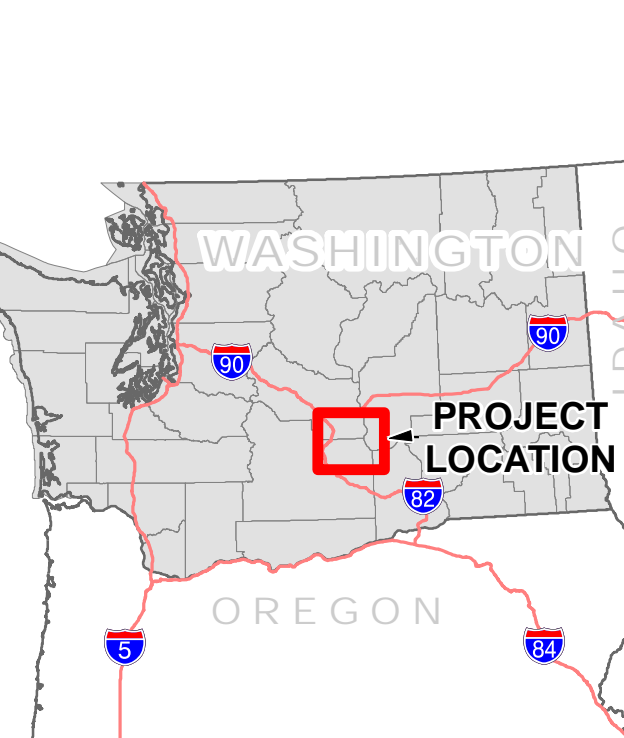
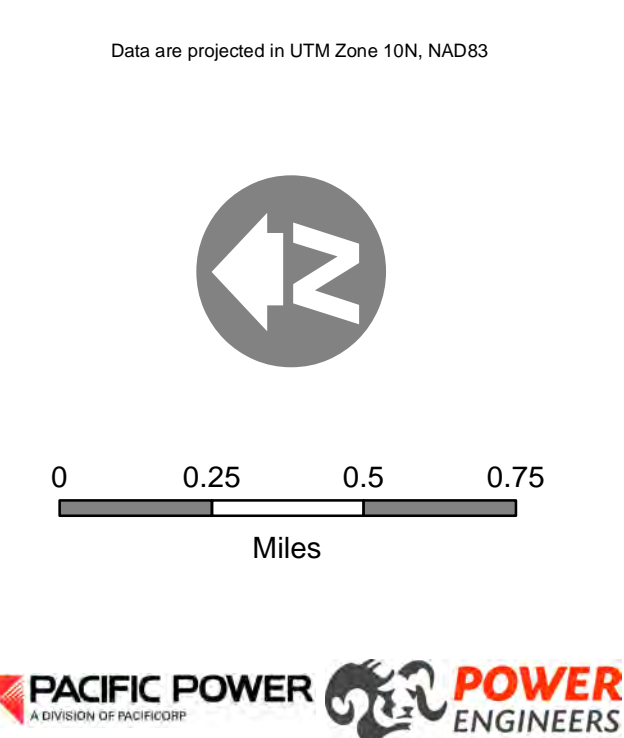


<p>Route Features</p> <ul style="list-style-type: none"> Alternative Route Route Node Study Corridor (2 miles) <p>Agriculture Types</p> <ul style="list-style-type: none"> Alfalfa Hay Timothy Hay 	<ul style="list-style-type: none"> Field Corn Wheat Apple Wildlife Feed Green Manure Fallow - Wheat Fallow - Unknown CRP Identified Acres CRP Acres (unknown location within section) 	<p>Irrigation Method</p> <ul style="list-style-type: none"> Center Pivot Wheel Line Hand-Movable Sprinkler Big Gun Drip Rill Flood 	<ul style="list-style-type: none"> Dryland Unknown <p>Irrigation Infrastructure</p> <ul style="list-style-type: none"> Pump Station Buried Drain Manhole Buried Drain Waterway Line 	<ul style="list-style-type: none"> Lateral Line Wasteway Line Open Drain Line Open Water Pond Canal ROW Area 	<p>Existing Transmission Facilities</p> <ul style="list-style-type: none"> 500kV Transmission Line 230kV Transmission Line 115kV Transmission Line <p>Boundaries</p> <ul style="list-style-type: none"> County 	<p>Transportation</p> <ul style="list-style-type: none"> Interstate Highway US Highway State Highway Local Access Road 	<p>Data are projected in UTM Zone 10N, NAD83</p> <p>PACIFIC POWER & LIGHT A DIVISION OF Xcel Energy</p> <p>POWER ENGINEERS</p>	<p>WASHINGTON OREGON</p> <p>PROJECT LOCATION</p>	<p>Vantage - Pomona Heights 230 kV Transmission Line Project</p> <p>Agriculture & Irrigation</p> <p>Page 3 of 7</p>
---	--	--	--	---	--	---	--	--	--

File Saved: 1/20/24 4:23:21 PM
Path: W:\114809_VantagePomona\PER\Environmental\GIS\Appendix\Agriculture_Irrigation_MB.mxd



Route Features Alternative Route Route Node Study Corridor (2 miles)	Agriculture Types Alfalfa Hay Grass Hay Timothy Hay	Crop Types Onion Potato Green Pea Field Corn Asparagus Wheat Wine Grape Concord Grape Apple Cherry Apricot Feed Lot Fallow - Unknown	Irrigation Method Center Pivot Wheel Line Hand-Movable Sprinkler Big Gun Drip Rill Flood	Irrigation Infrastructure Dryland Unknown Pump Station Buried Drain Manhole Buried Drain Waterway Line	Transmission Lines Lateral Line Wasteway Line Open Drain Line Open Water Pond Canal ROW Area	Existing Transmission Facilities 500kV Transmission Line 230kV Transmission Line 115kV Transmission Line	Boundaries County	Transportation Interstate Highway US Highway State Highway Local Access Road
--	---	--	--	---	--	--	-----------------------------	---

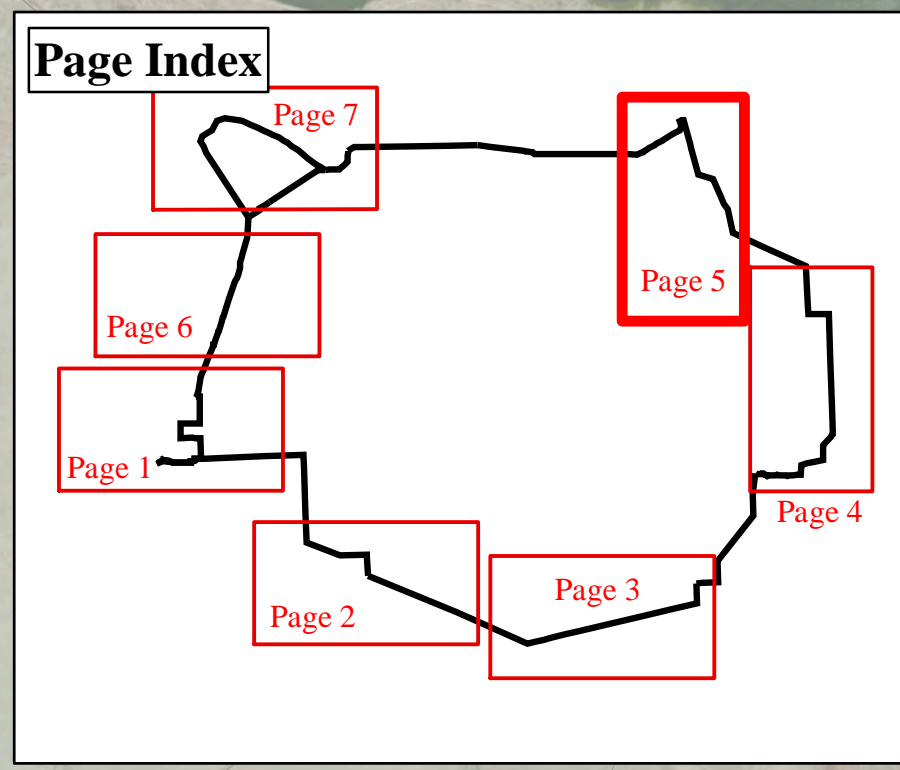


Vantage - Pomona Heights
230 kV Transmission Line Project

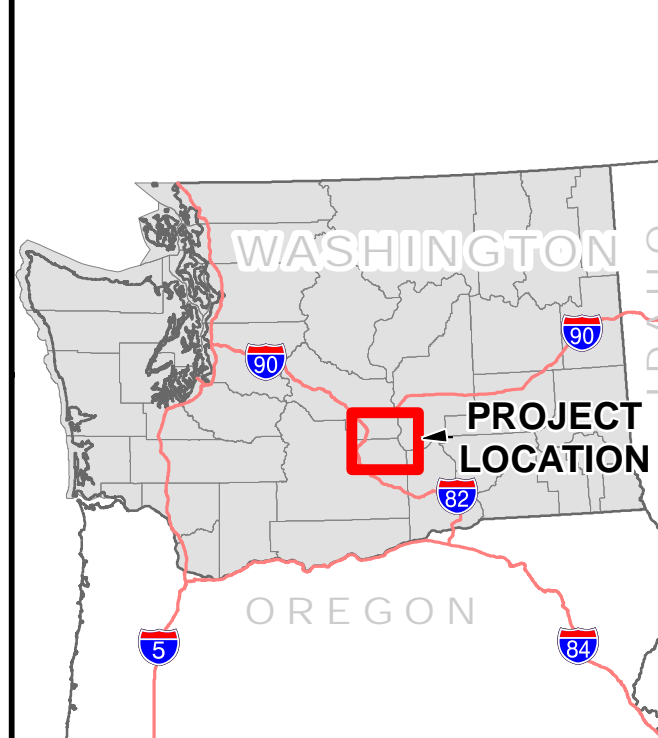
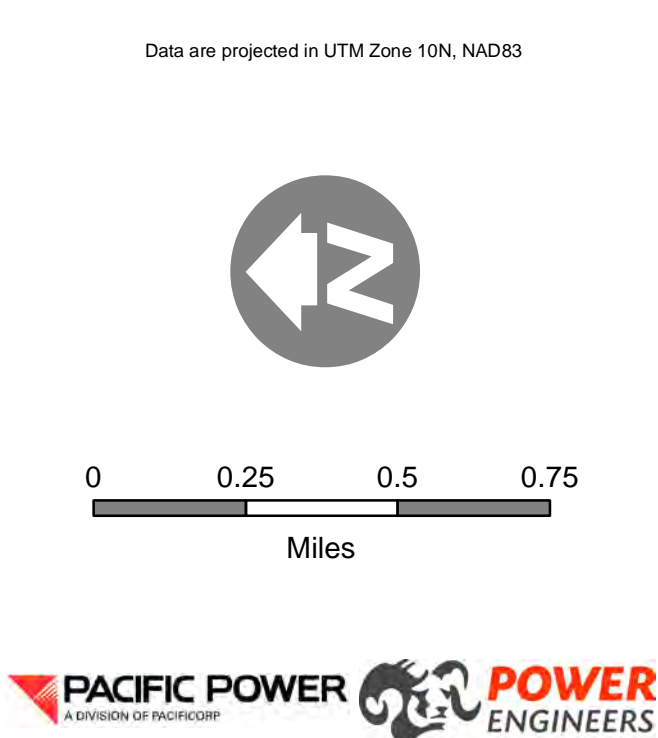
Agriculture & Irrigation

Page 4 of 7

File Saved: 7/26/2014 9:52:39 AM
 Path: W:\114809_VantagePomonaPERE\Environment\GIS\Appendix\Agriculture_Irrigation_ME.mxd



Route Features	Agriculture Types	Irrigation Method	Irrigation Infrastructure	Existing Transmission Facilities	Boundaries	Transportation
Alternative Route	Alfalfa Hay	Center Pivot	Pump Station	500kV Transmission Line	County	Interstate Highway
Route Node	Mint	Wheel Line	Buried Drain Manhole	230kV Transmission Line		US Highway
Study Corridor (2 miles)	Blueberry	Hand-Movable Sprinkler	Buried Drain	115kV Transmission Line		State Highway
	Concord Grape	Big Gun	Waterway Line			Local Access Road
	Apple	Drip	Lateral Line			
	Cherry	Rill	Wasteway Line			
	Pasture	Flood	Open Drain Line			
			Open Water Pond			
			Canal ROW Area			

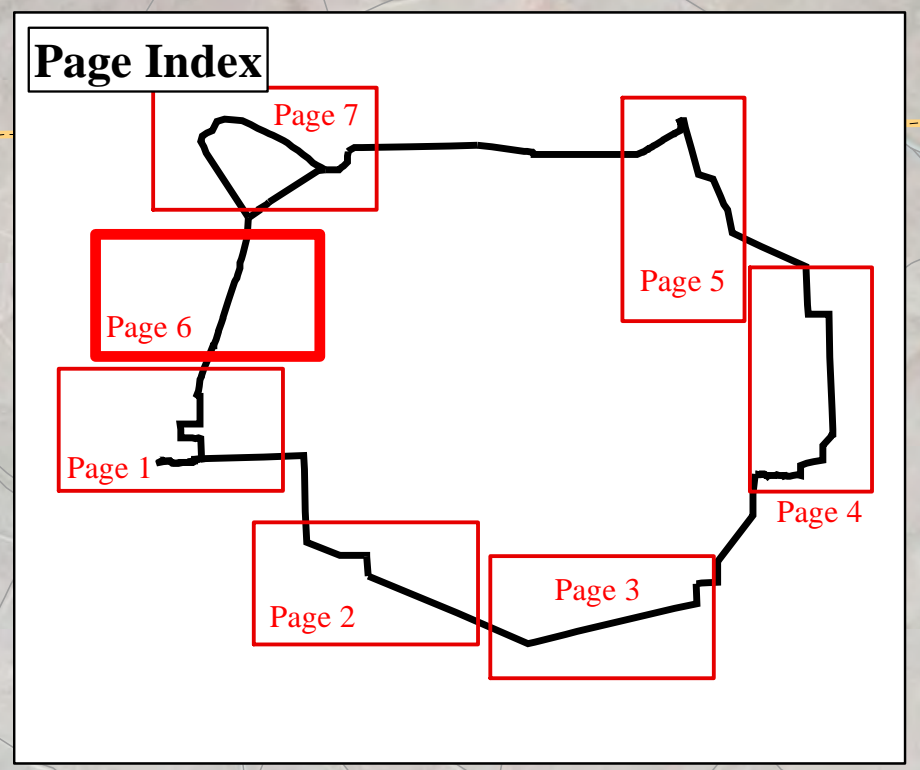


Vantage - Pomona Heights
230 kV Transmission Line Project

Agriculture & Irrigation

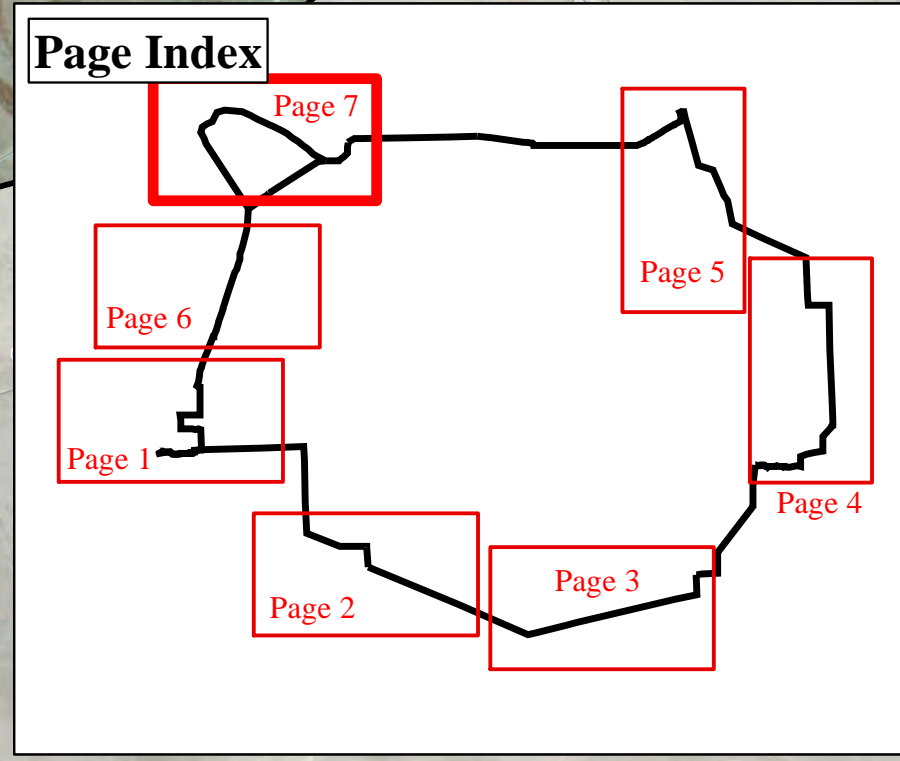
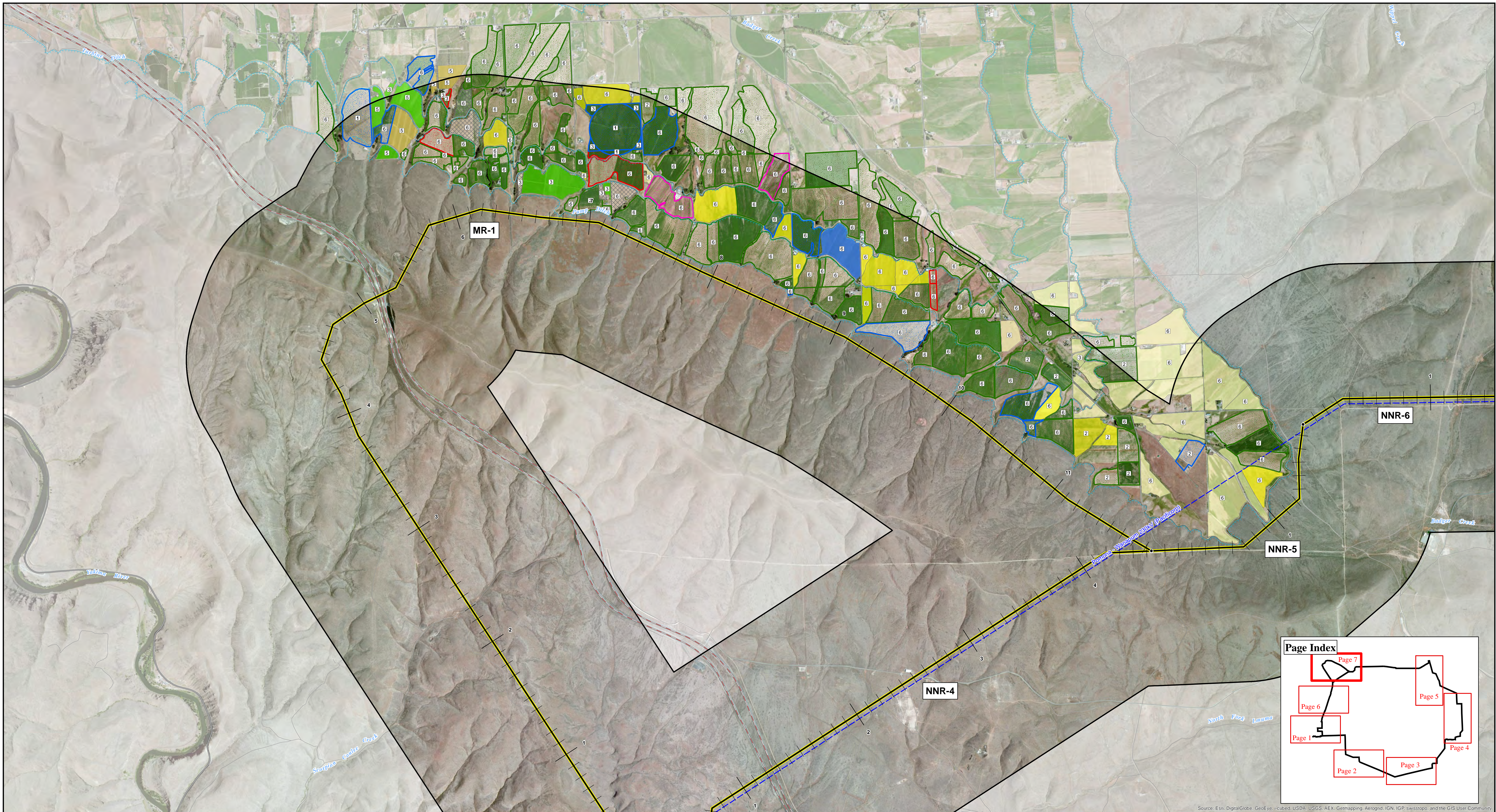
Page 5 of 7

File Saved: 7/24/2014 9:52:39 AM
Path: W:\114809_VantagePomonaPERE\Environmental\GIS\Appendix\Agriculture_Irrigation_ME.mxd

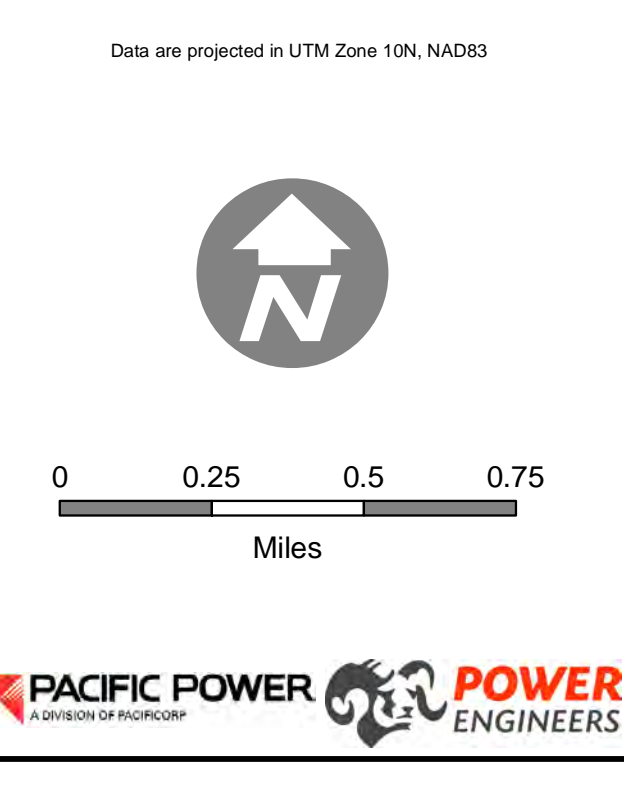


<p>Route Features</p> <ul style="list-style-type: none"> Alternative Route Route Node Study Corridor (2 miles) 	<p>Agriculture Types</p> <ul style="list-style-type: none"> Grass Hay Apple Pear Fallow - Unknown 	<p>Irrigation Method</p> <ul style="list-style-type: none"> Center Pivot Wheel Line Hand-Movable Sprinkler Big Gun Drip Rill Flood 	<p>Irrigation Infrastructure</p> <ul style="list-style-type: none"> Dryland Unknown Pump Station Buried Drain Manhole Buried Drain Waterway Line 	<ul style="list-style-type: none"> Lateral Line Wasteway Line Open Drain Line Open Water Pond Canal ROW Area 	<p>Existing Transmission Facilities</p> <ul style="list-style-type: none"> 500kV Transmission Line 230kV Transmission Line 115kV Transmission Line <p>Boundaries</p> <ul style="list-style-type: none"> County 	<p>Transportation</p> <ul style="list-style-type: none"> Interstate Highway US Highway State Highway Local Access Road 	<p>Data are projected in UTM Zone 10N, NAD83</p> <p>PACIFIC POWER & LIGHTING POWER ENGINEERS</p>	<p>WASHINGTON OREGON PROJECT LOCATION</p>	<p>Vantage - Pomona Heights 230 kV Transmission Line Project</p> <h2>Agriculture & Irrigation</h2> <p>Page 6 of 7</p>
--	--	--	---	---	--	---	--	---	---

File Saved: 1/30/2014 4:23:21 PM
Path: W:\114809_Vantage\Pomona\PER\Environmental\GIS\Appendix\Agriculture_Irrigation_M6.mxd



Route Features Alternative Route Route Node Study Corridor (2 miles) Agriculture Types Alfalfa Hay Grass Hay Sudangrass Timothy Hay	Sweet Corn Wheat Oat Apple Pear Pasture Fallow - Unknown	Irrigation Method Center Pivot Wheel Line Hand-Movable Sprinkler Big Gun Drip Rill Flood Dryland Unknown Irrigation Infrastructure Pump Station Buried Drain Manhole Buried Drain Waterway Line	Lateral Line Wasteway Line Open Drain Line Open Water Pond Canal ROW Area	Existing Transmission Facilities 500kV Transmission Line 230kV Transmission Line 115kV Transmission Line Boundaries County	Transportation Interstate Highway US Highway State Highway Local Access Road
---	--	---	---	---	---



Vantage - Pomona Heights
 230 kV Transmission Line Project

Agriculture & Irrigation

Page 7 of 7

Date Saved: 1/30/2014 4:23:21 PM
 Path: W:\114809_VantagePomona\PER\Environmental\GIS\Appendix\Agriculture_Irrigation_MB.mxd