

APPENDIX A PROJECT MAPS

THIS PAGE INTENTIONALLY LEFT BLANK.

Construction Access Levels

Legend

Route Features

- Route Node
- Study Corridor (2 miles)

Construction Access Levels

- 0- No Road Construction (Agriculture/Slope/Water Crossing)
- 1- Overland Access (in flat terrain)
- 2- Use Existing Roads
- 3- Improve Existing Roads
- 4- Construct New Access, Flat to Rolling Terrain (0-8% slope)
- 5- Construct New Access, Rolling Terrain (8-15% slope)
- 6- Construct New Access, Steep Terrain (15-30% slope)
- 7- Construct New Access, Mountainous Terrain (>30% slope)

Existing Transmission Facilities

- 500kV Transmission Line
- 230kV Transmission Line
- 115kV Transmission Line

Substation

Boundaries

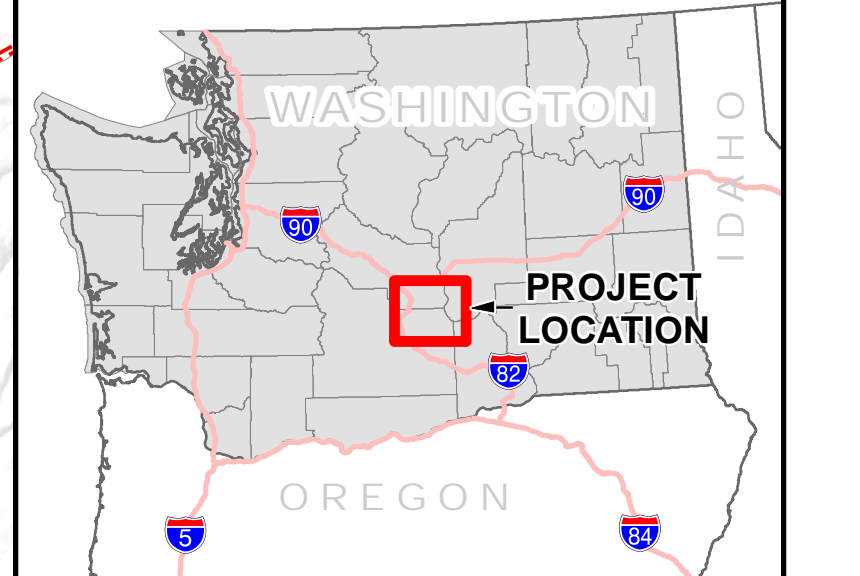
- County
- Township
- City Boundary
- Yakima Training Center

Transportation

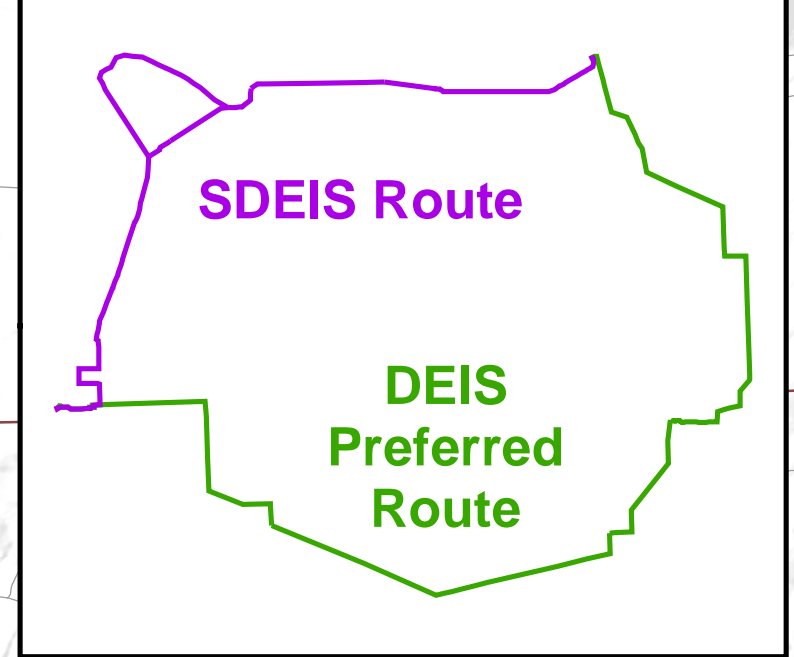
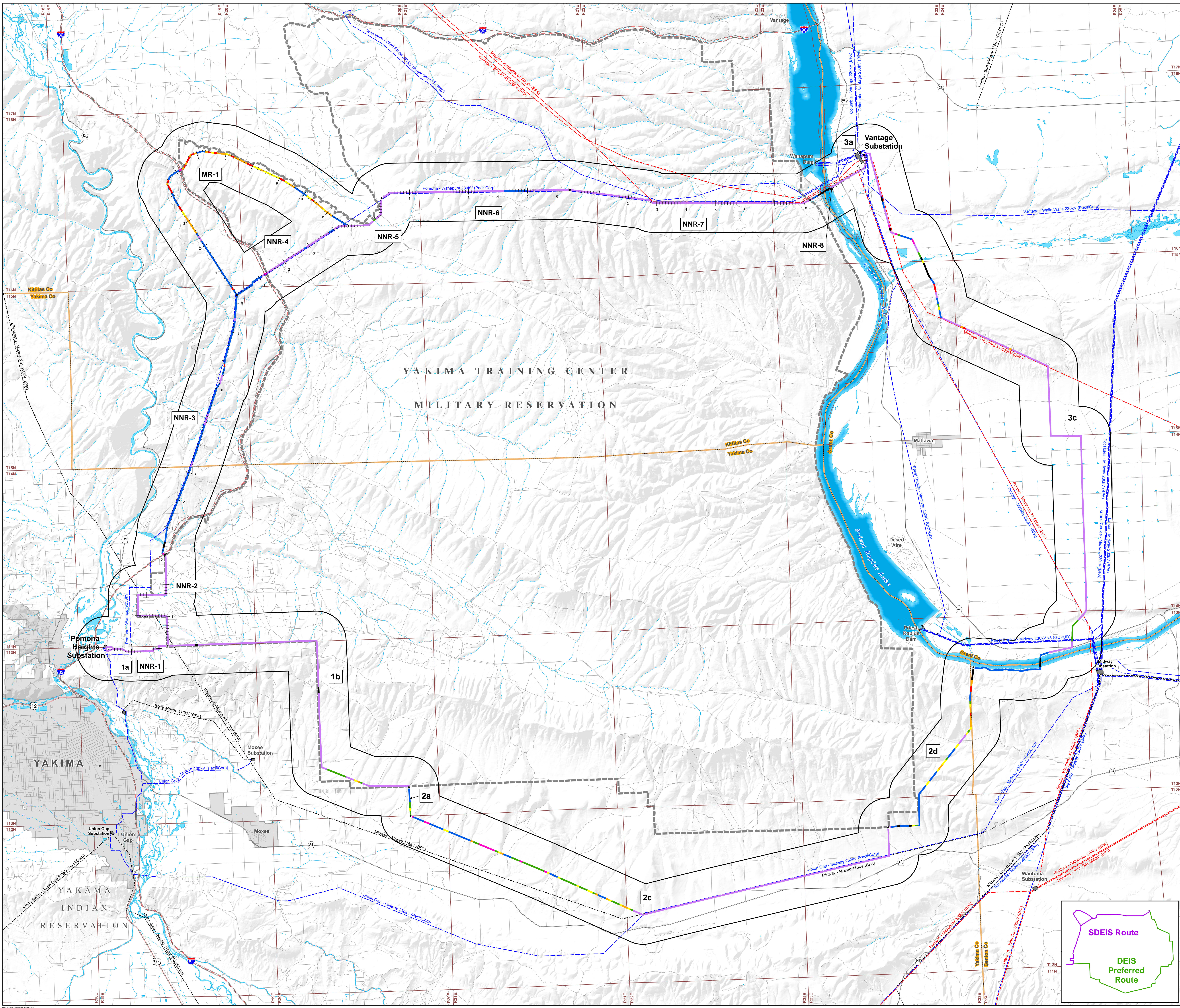
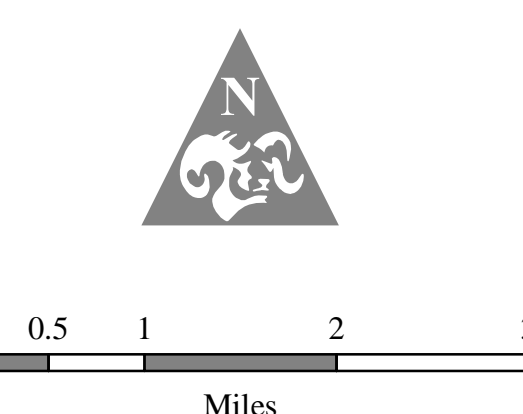
- Interstate Highway
- US Highway
- State Route
- Local Access Road

Water Features

- River or Perennial Stream
- Open Water



Data are projected in UTM Zone 10N, NAD83



Geohazards

Legend

Route Features

- Route Node
- Alternative Route
- Study Corridor (6 miles)

Active Faults

- Fault Trench
- Visible fault trace
- - - Inferred fault trace
- Concealed fault trace

Landslides

- ▣ Mapped Landslide

Liquefaction Susceptibility

- Very Low to Low
- Low
- Low to Moderate
- Moderate to High

Existing Transmission Facilities

- 500kV Transmission Line
- 230kV Transmission Line
- 115kV Transmission Line

Substation

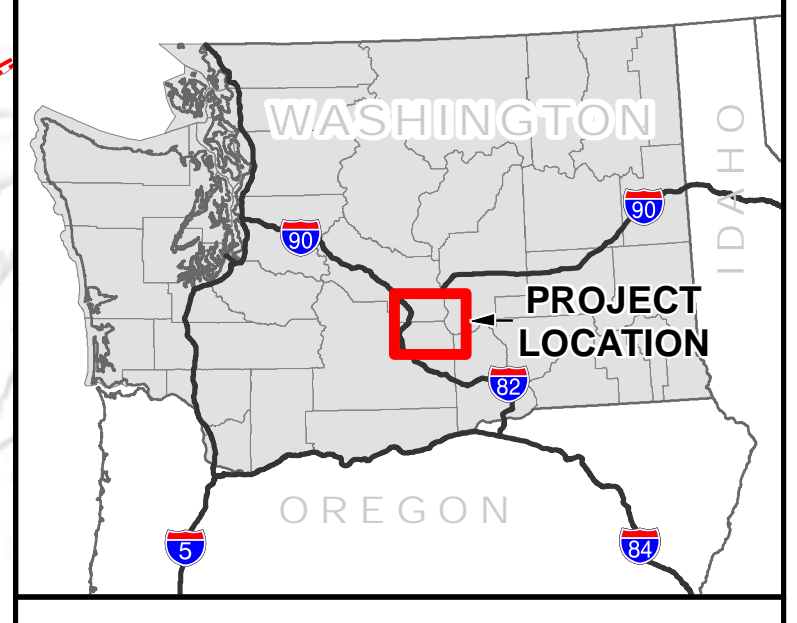
- ▣ County
- ▣ Township
- ▣ City Boundary
- ▣ Yakima Training Center

Transportation

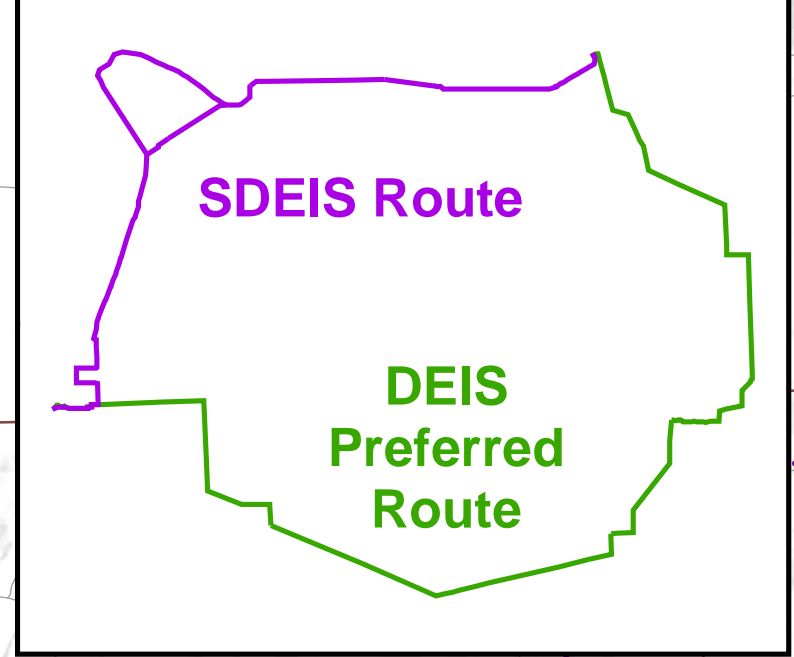
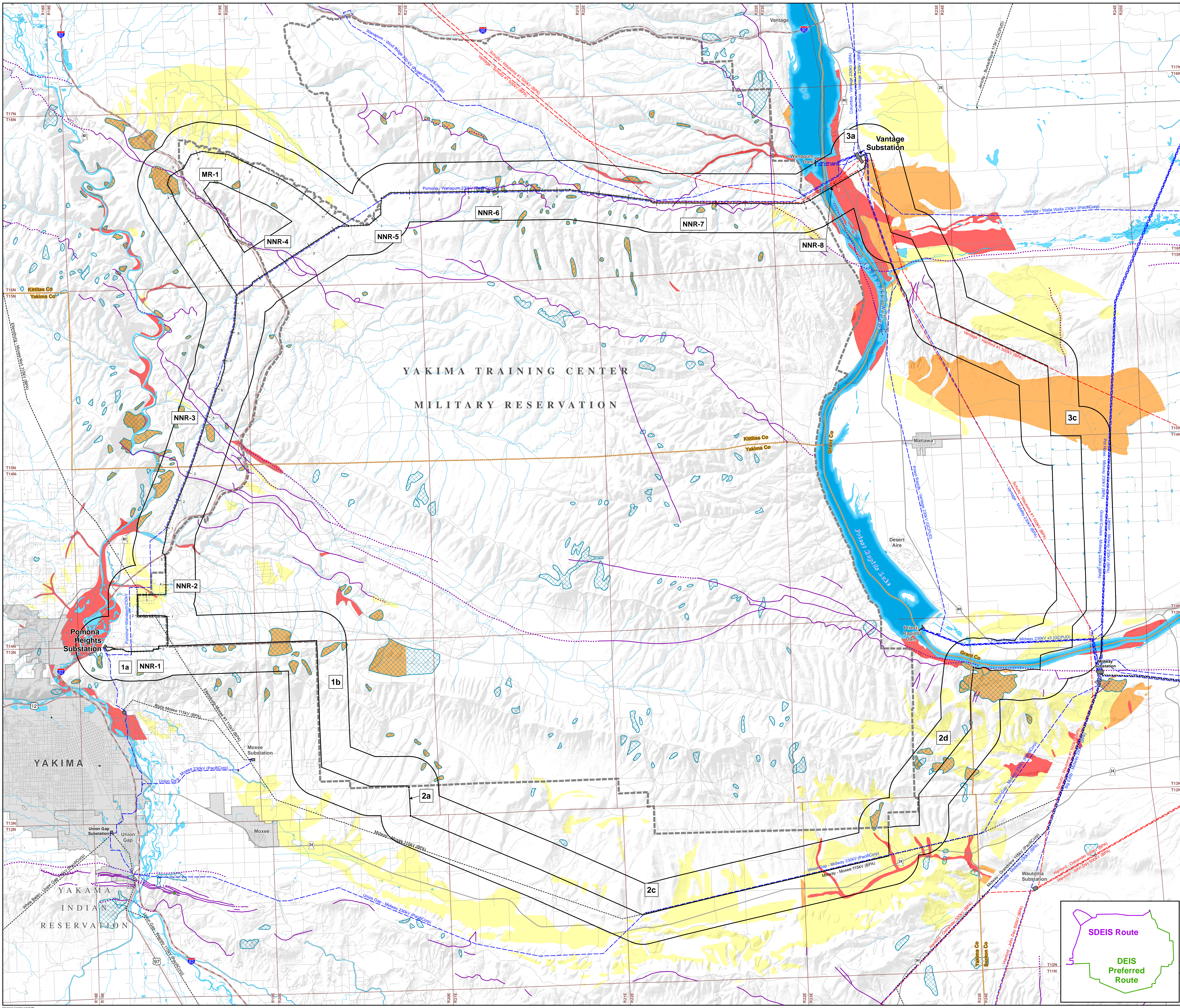
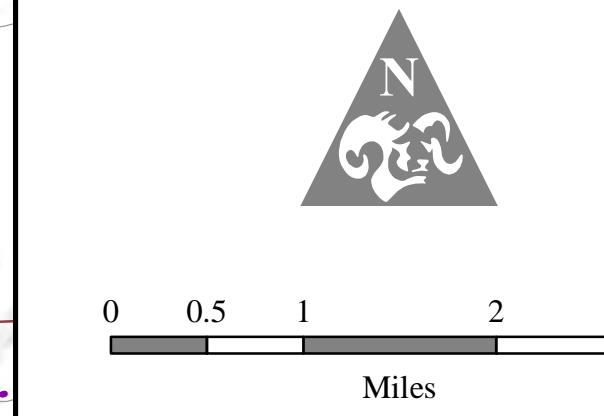
- Interstate Highway
- US Highway
- State Route
- Local Access Road

Water Features

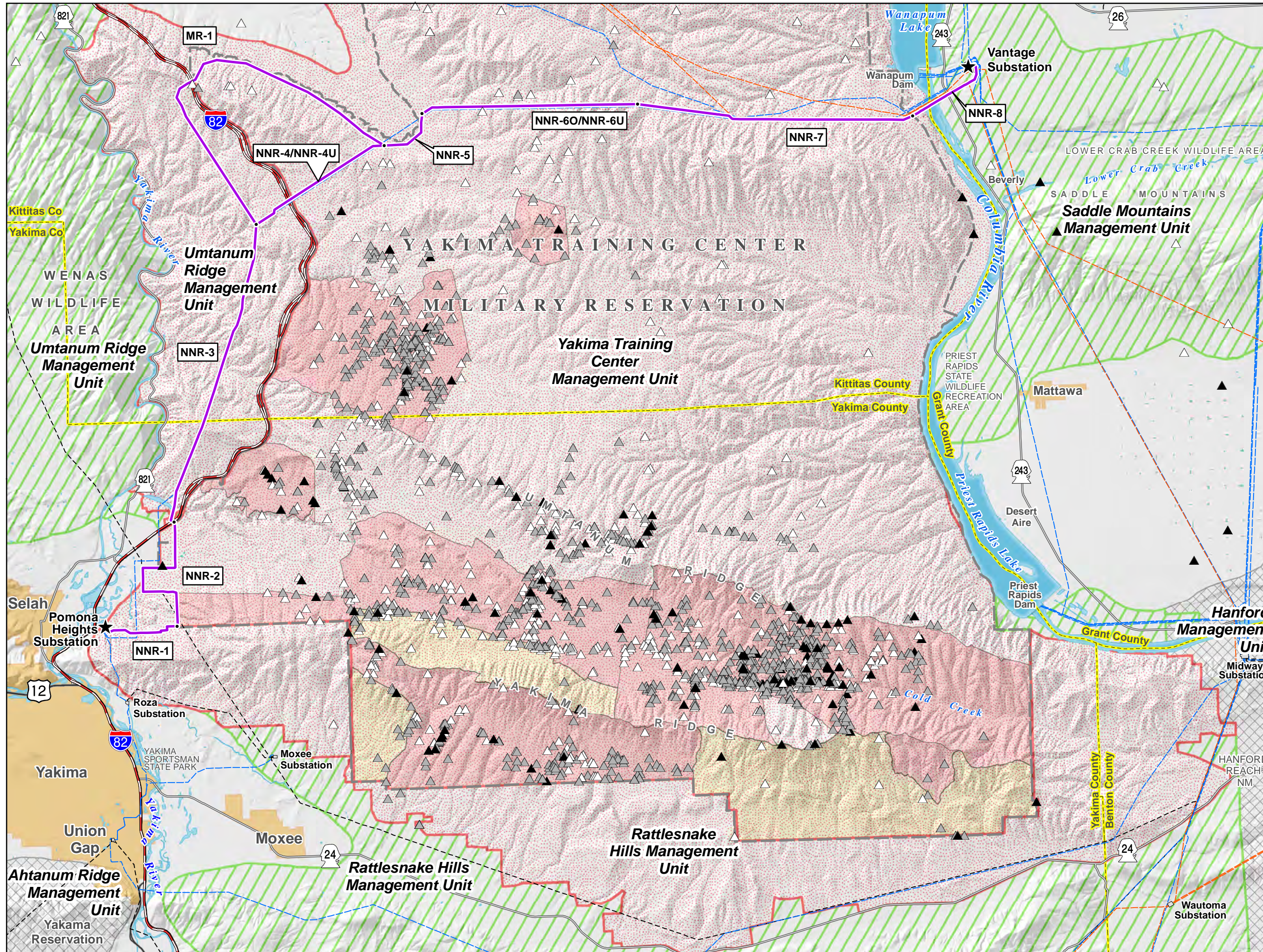
- River or Perennial Stream
- Open Water



Data are projected in UTM Zone 10N, NAD83



Sage-Grouse Occurrence & Management Zones



Legend

Routes

- Alternative Route
- Route Segment Name (1a)
- Route Segment Node
- Project Substation

Existing Transmission

- 500kV
- 230kV
- 115kV
- Substation

Sage-Grouse Occurrence Data

- Incidental Sighting 2011-2012
- Incidental Sighting 2001-2010
- Incidental Sighting 1969-2000

WA Sage-Grouse Management Units

- Regularly Occupied Habitat
- Occasionally Occupied Habitat
- Expansion Habitat

YTC Sage-Grouse Protection Areas 2010

- Primary
- Secondary

Roads

- Interstate Highway
- US Highway
- State Highway

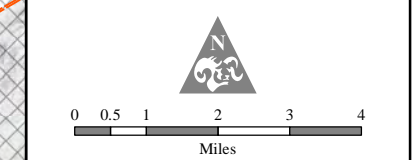
Base Features

- County Boundary
- Municipality
- Yakima Training Center



Due to the sensitive nature of the wildlife location data, lek location data is not shown.

Data are projected in UTM Zone 10N, NAD83



Important Farmland Soils

Legend

Route Features

- Route Node
- Alternative Route
- Study Corridor (2 miles)

Important Farmland Soils

- Farmland of Statewide Importance
- Unique Farmland
- Prime Farmland (if drained)
- Prime Farmland (if irrigated)

Existing Transmission Facilities

- 500kV Transmission Line
- 230kV Transmission Line
- 115kV Transmission Line

Substation

- Substation

Boundaries

- County
- Township
- City Boundary

Yakima Training Center

- Yakima Training Center

Transportation

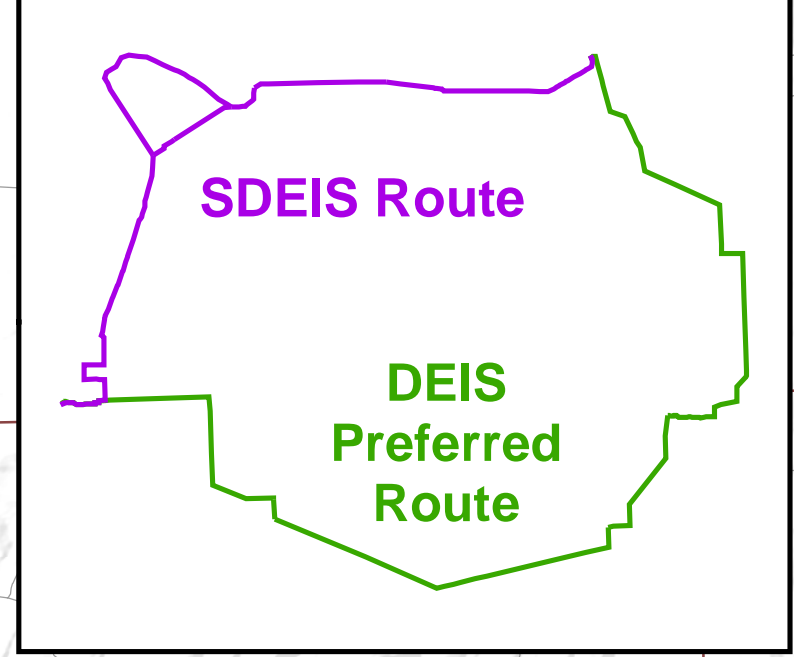
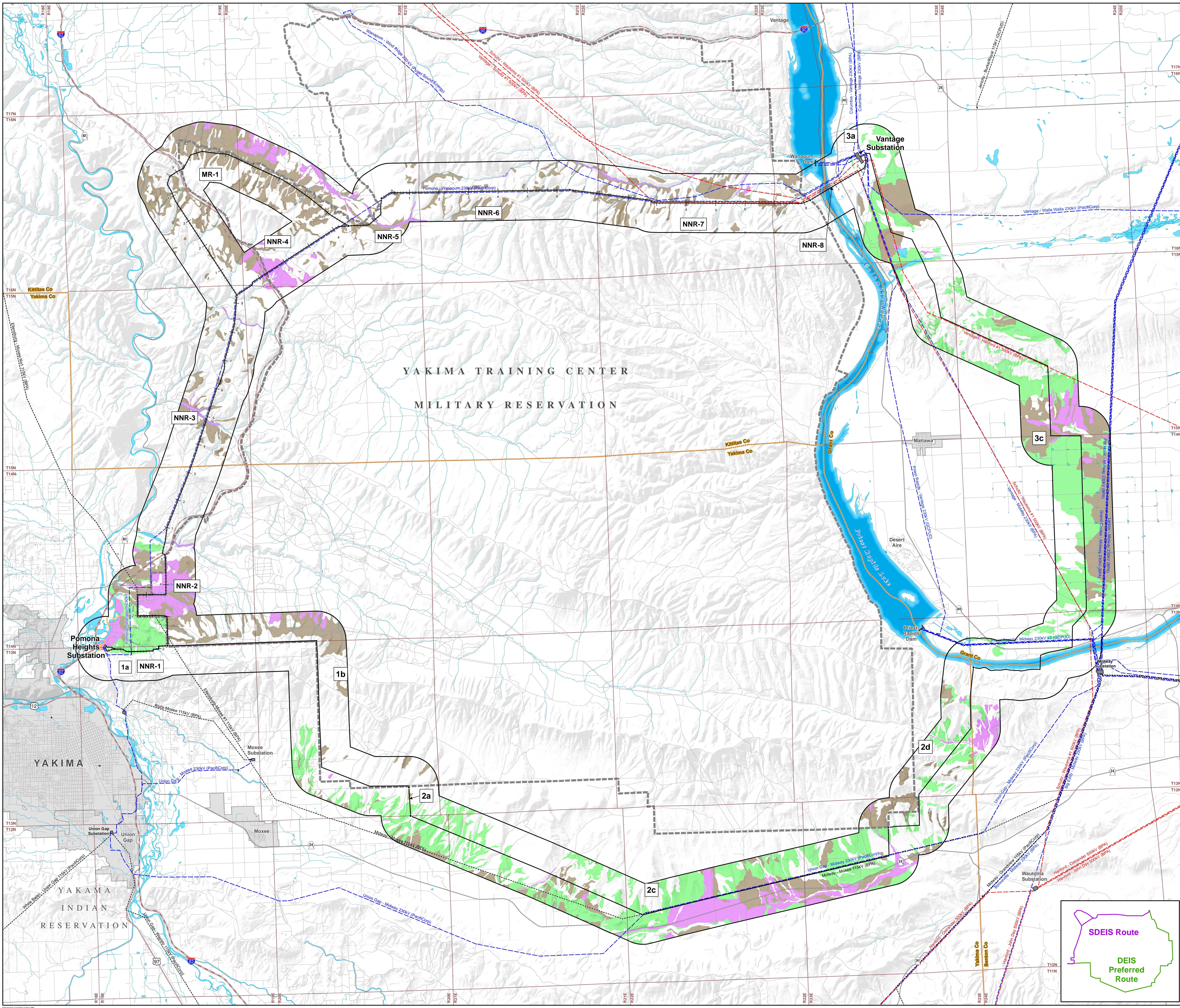
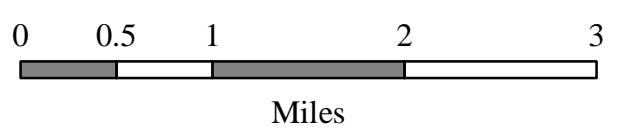
- Interstate Highway
- US Highway
- State Route
- Local Access Road

Water Features

- River or Perennial Stream
- Open Water



Data are projected in UTM Zone 10N, NAD83

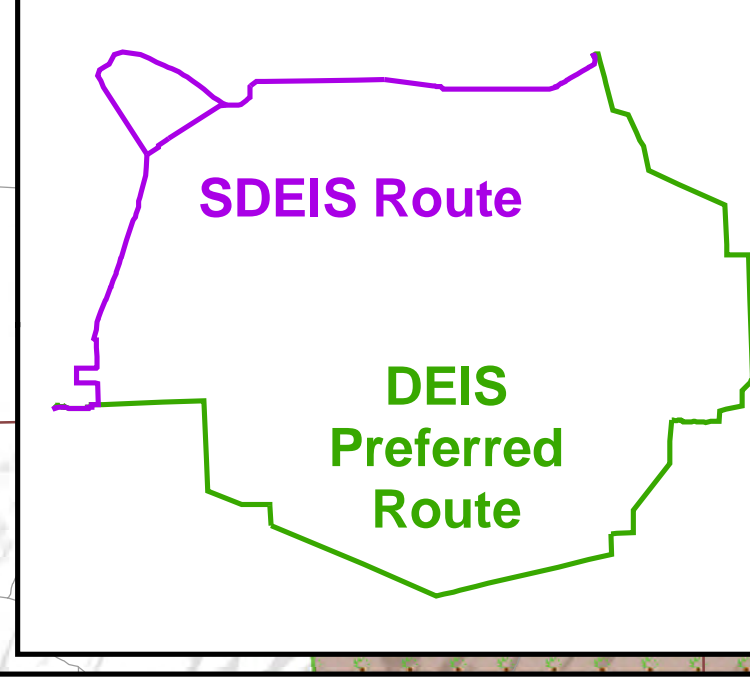
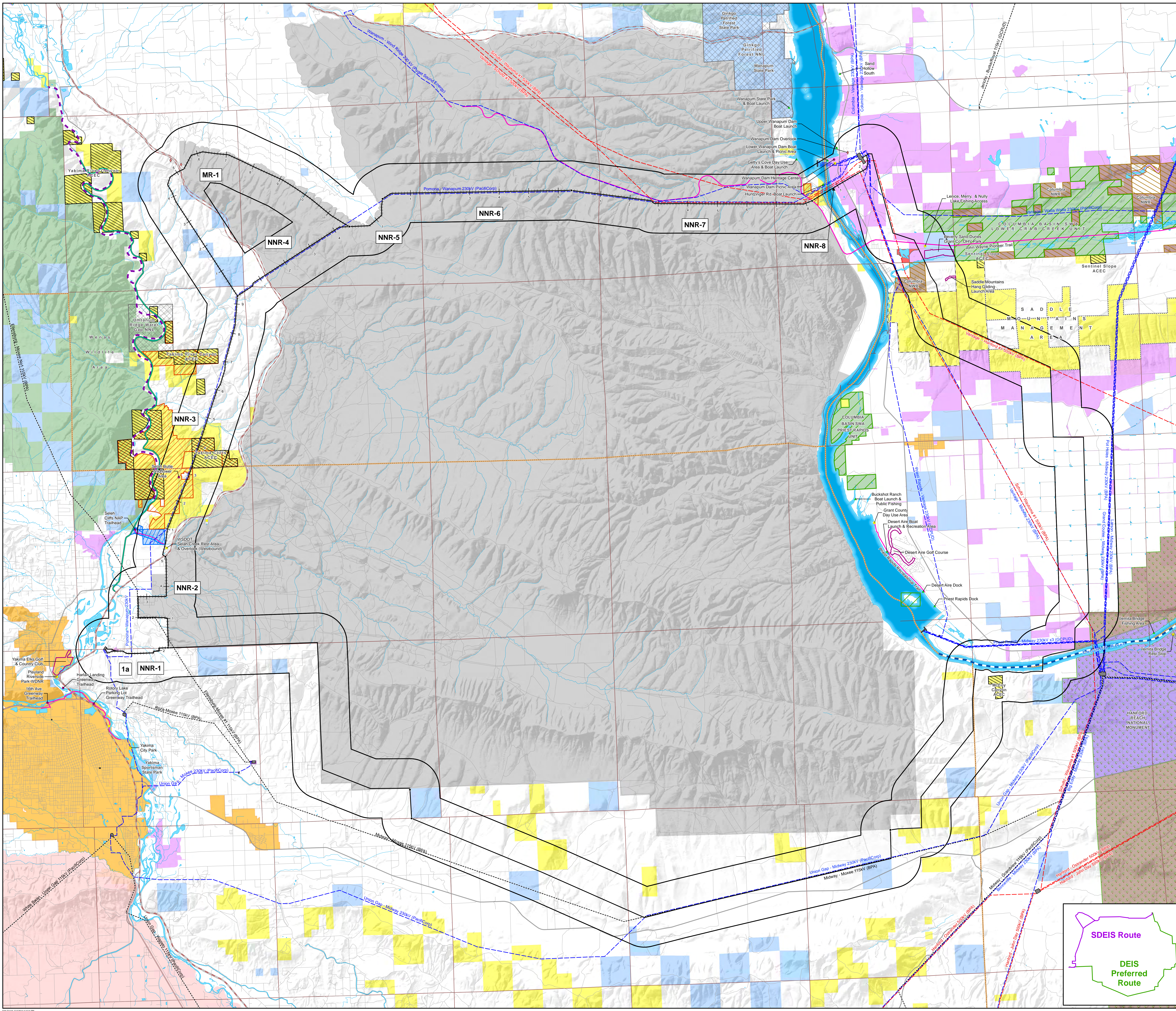
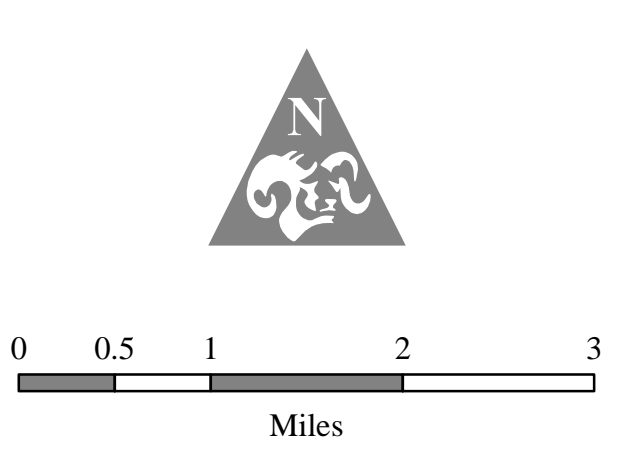


Jurisdiction, Recreation, and Special Management Areas

- Legend**
- Route Features**
- Route Node
 - Alternative Route
 - Study Corridor (2 miles)
- Boundaries**
- County
 - Township
 - City Boundary
- Existing Transmission Facilities**
- 500kV Transmission Line
 - 230kV Transmission Line
 - 115kV Transmission Line
 - Substation
- Transportation**
- Interstate Highway
 - US Highway
 - State Highway
 - Local Access Road
- Water Features**
- River or Perennial Stream
 - Open Water
- Recreation and Special Management Areas**
- Dock, Boat Launch, or Fishing Access
 - Park, Picnic Area, or Rest Area
 - Recreation Location
 - Scenic Overlook or Viewpoint
 - Designated Scenic Byway
 - Trail
- Country**
- Burkett Lake Recreation Area / Crab Creek Corridor
- State**
- Columbia Basin State Wildlife Area
 - Washington Department of Natural Resources: Natural Area Preserve (NAP)
- Federal**
- Eligible Recreational River
 - Eligible Wild and Scenic River
 - Area of Critical Environmental Concern (ACEC)
 - Proposed Area of Critical Environmental Concern (ACEC)
 - National Monument
 - National Natural Landmark
 - National Wildlife Refuge
 - Saddle Mountains OHV road restricted area
 - Saddle Mountains open OHV area
- Jurisdiction**
- Private Individual or Company
 - Bureau of Indian Affairs
 - Bureau of Land Management
 - Bureau of Reclamation
 - Washington Department of Fish and Wildlife
 - State of Washington
 - Yakima Training Center (DOD)
 - U.S. Fish and Wildlife Service
 - Department of Energy

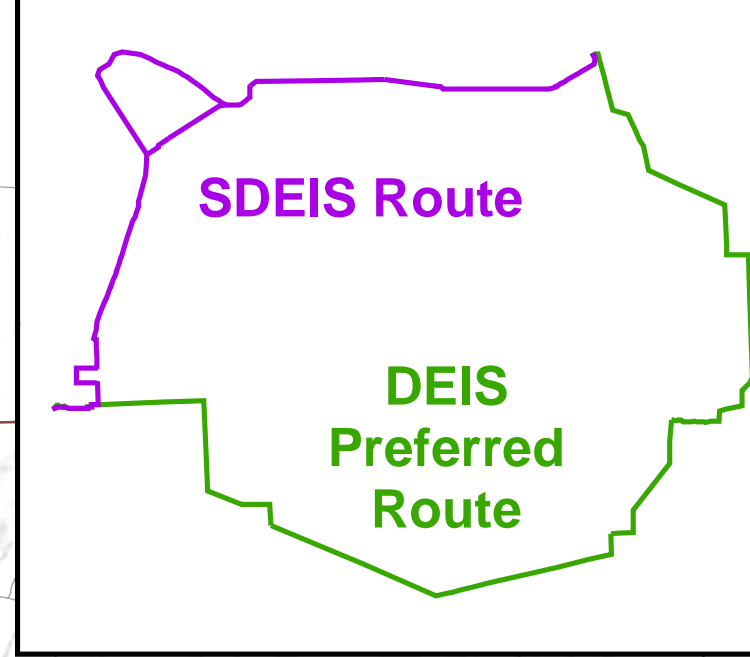
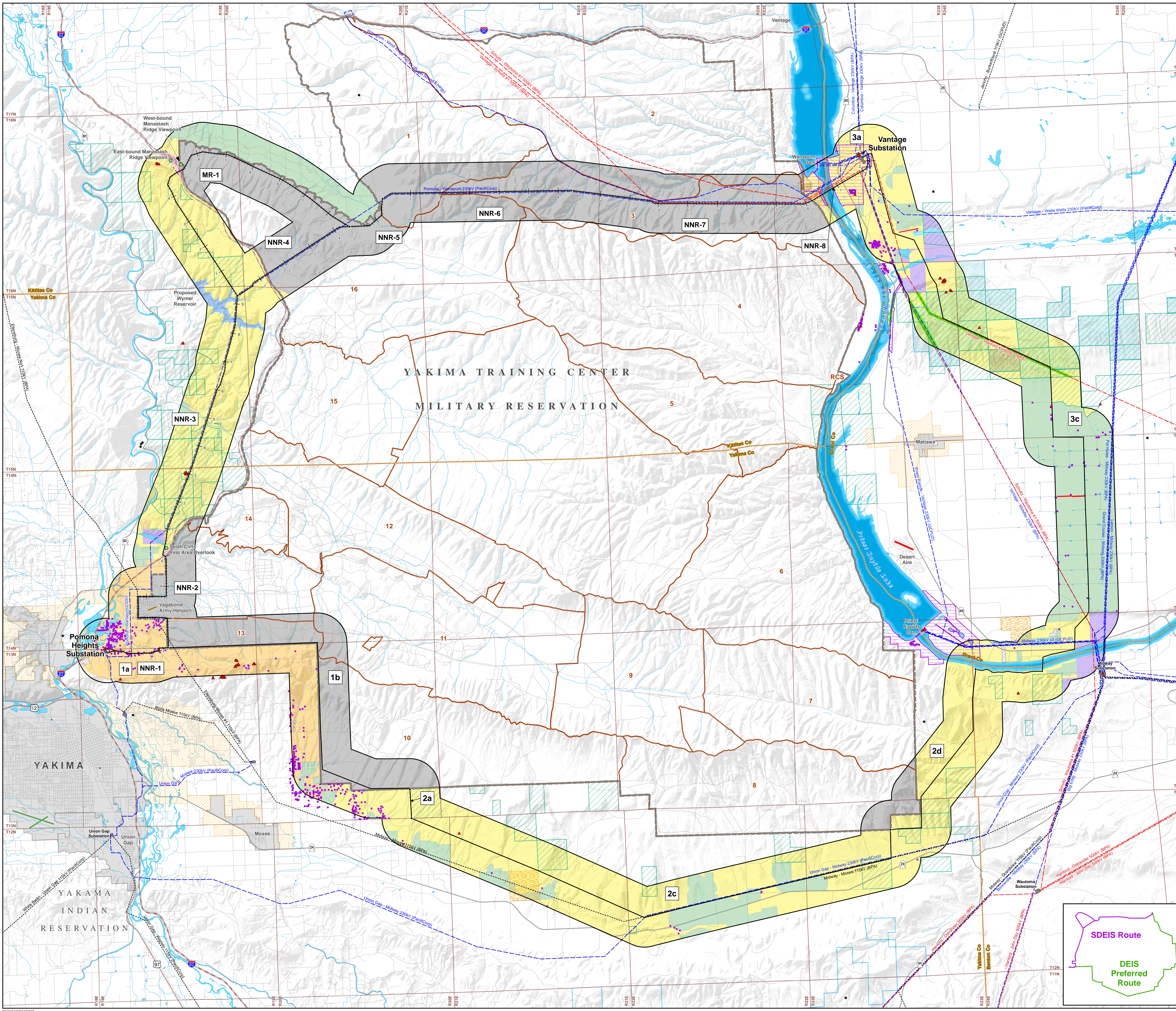
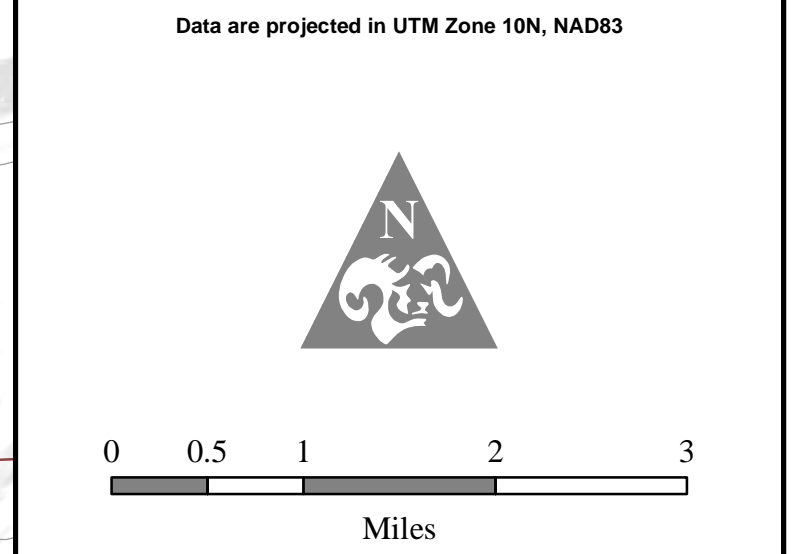


Data are projected in UTM Zone 10N, NAD83

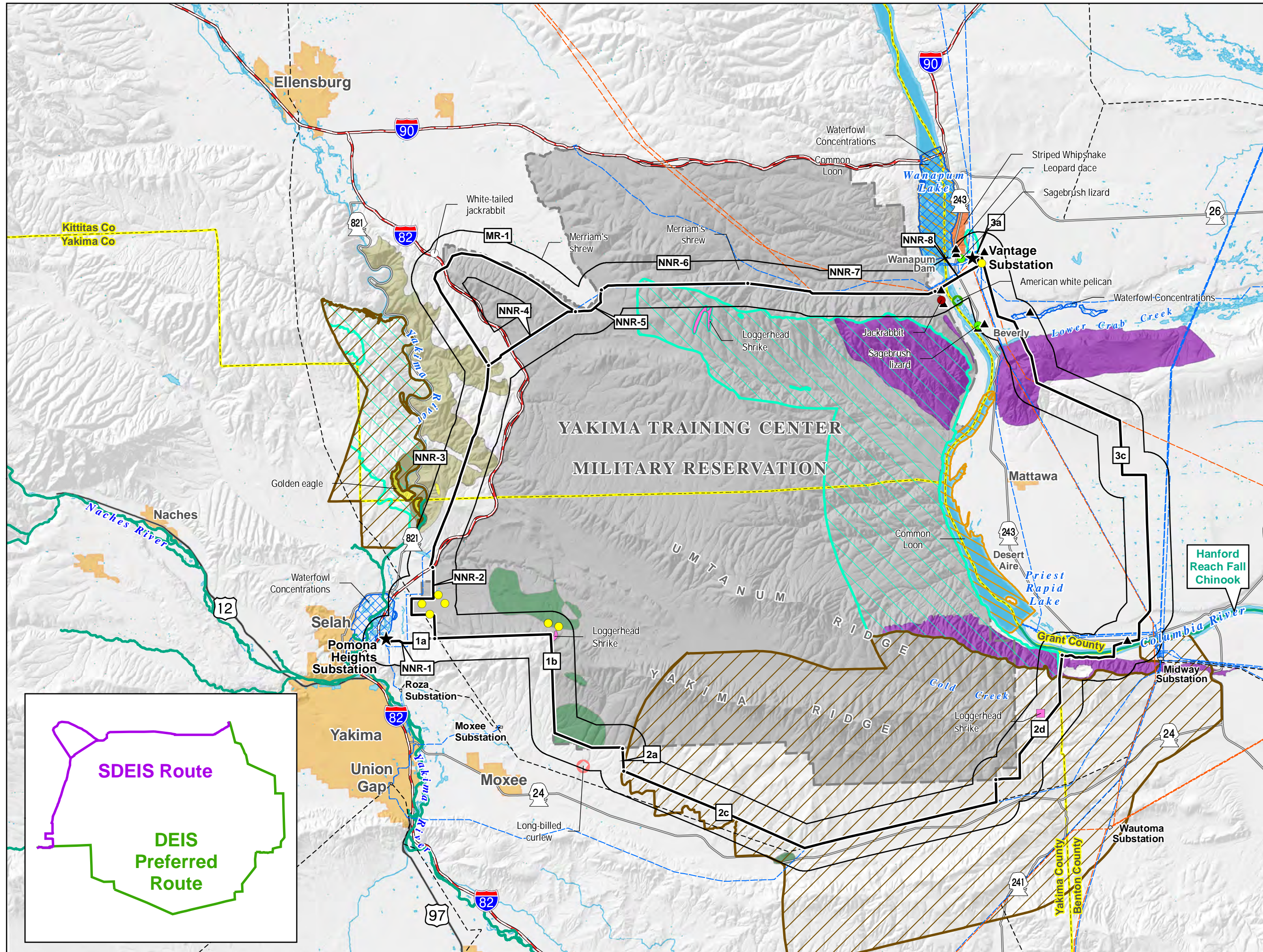


Land Use

- Legend**
- Route Features**
- Route Node
 - Alternative Route
 - Study Corridor (2 miles)
- Land Use Features**
- Oil or Gas Well
 - FCC Communication Tower
 - Grant County PUD Land Designation: Project Facility
 - Urban Growth Area
- Residences**
- Residence
- Leases**
- BLM or State Grazing
 - BLM Oil & Gas
 - BLM Wind Energy Facility
 - State Irrigated Agriculture
- Existing Land Use**
- Residential
 - Irrigated Cropland
 - Undeveloped/Grazing/Vacant
 - Recreation/Conservation
 - Transportation
 - Yakima Training Center
 - BLM Designated Utility Corridor (200 ft minimum width)
 - Gravel Mine
- Existing Transmission Facilities**
- 500kV Transmission Line
 - 230kV Transmission Line
 - 115kV Transmission Line
- Other Features**
- Substation
 - Dam
- Boundaries**
- County
 - Township
 - City Boundary
 - Yakima Training Center (YTC)
 - YTC Training Area
- Transportation**
- WSDOT Rest Area
 - Interstate Highway
 - US Highway
 - State Route
 - Local Access Road
 - Public Airport
 - Private Airstrip
 - Vagabond Army Helipoint
- Water Features**
- River or Perennial Stream
 - Open Water
 - Proposed Wymer Reservoir



Sensitive Wildlife Species



Legend

- Alternative Route
- Route Segment Name
- Route Segment Node
- Project Substation

Existing Transmission

- 500kV
- 230kV
- 115kV
- Substation

PHS Species Data

PHS Species Points

- Black-tailed jackrabbit
- White-tailed jackrabbit
- Jackrabbit spp.
- Leopard dace
- Loggerhead shrike
- Merriam's shrew
- Night snake
- Sagebrush lizard

PHS Species Location Polygons

- American white pelican
- Long-billed curlew

Priority Species Regional Location Area

- Bighorn Sheep
- Chukar
- Common Loon
- Elk
- Golden Eagle
- Loggerhead Shrike
- Long-billed curlew
- Mule Deer
- Striped Whipsnake
- Waterfowl Concentrations

WA Department of Fish and Wildlife

- Salmonid Stock Inventory

Roads

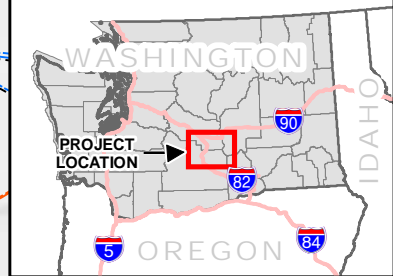
- Interstate Highway
- US Highway
- State Highway

Base Features

- County Boundary
- Municipality
- Yakima Training Center

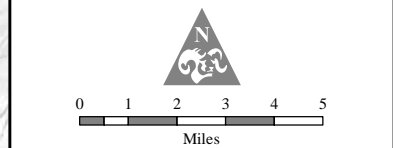
SDEIS Route

DEIS Preferred Route



Due to the sensitive nature of the wildlife location data, some species or types of locations are not shown. All data shown is at 1:250,000.

Data are projected in UTM Zone 10N, NAD83



Soil Erosion Potential by Water

Legend

Route Features

- Route Node
- Alternative Route
- Study Corridor (2 miles)

Soil Restoration Potential

- High Potential
- Moderate Potential
- Low Potential
- Not Rated
- Not Applicable

Soil Erosion Potential by Water

- Low Risk Factor
- Moderate Risk Factor
- High Risk Factor
- Not rated or Not Available
- Agricultural Area

Existing Transmission Facilities

- 500kV Transmission Line
- 230kV Transmission Line
- 115kV Transmission Line

Substation

Boundaries

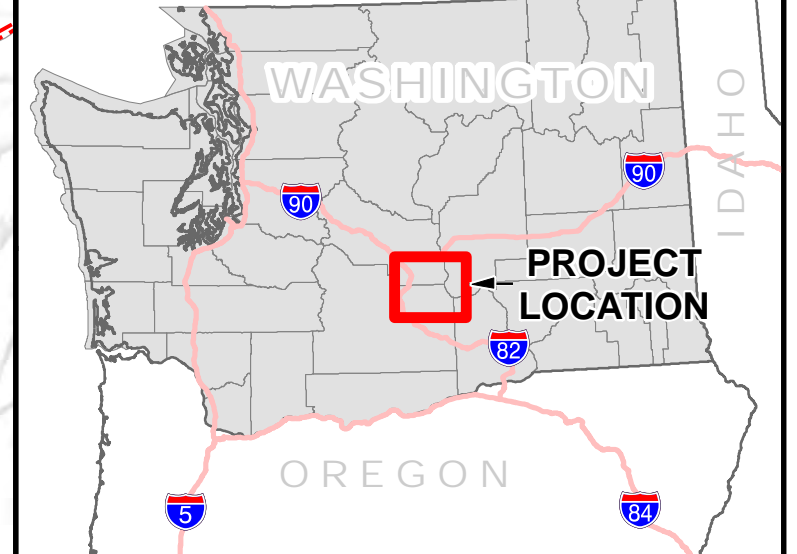
- County
- Township
- City Boundary
- Yakima Training Center

Transportation

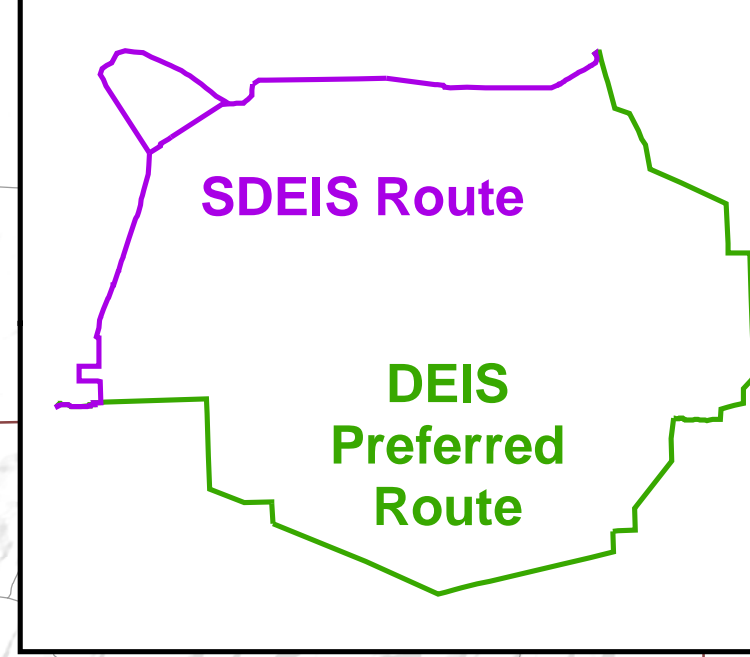
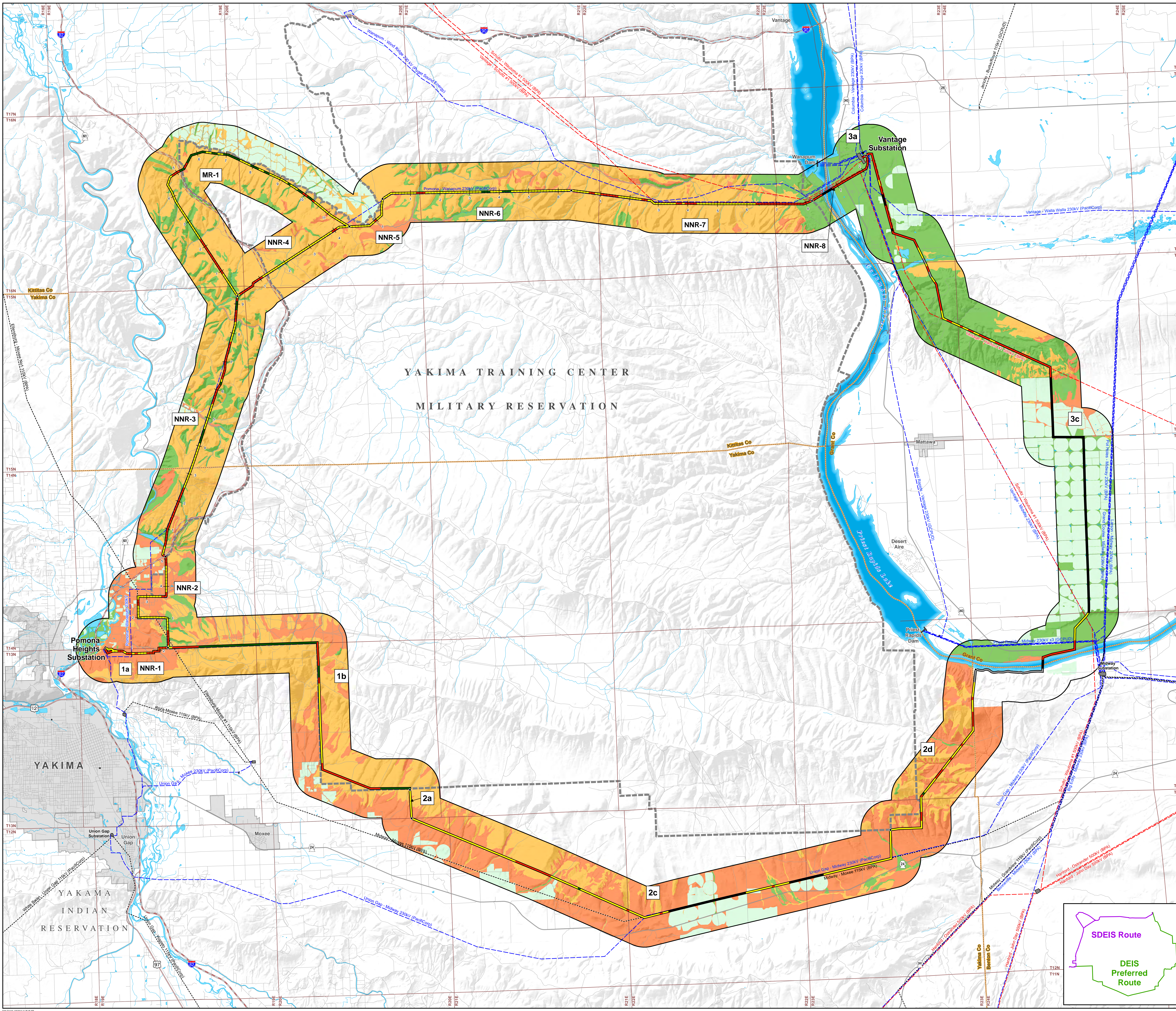
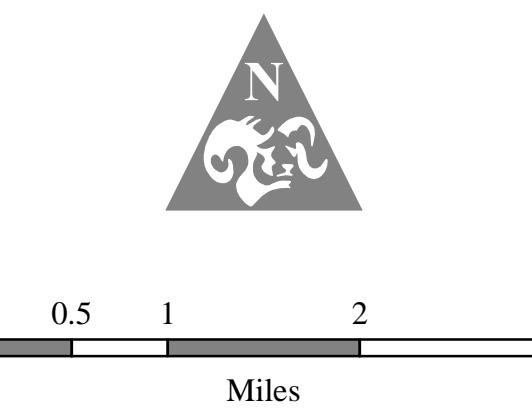
- Interstate Highway
- US Highway
- State Route
- Local Access Road

Water Features

- River or Perennial Stream
- Open Water



Data are projected in UTM Zone 10N, NAD83



Soil Erosion Potential by Wind

Legend

Route Features

- Route Node
- Alternative Route
- Study Corridor (2 miles)

Soil Restoration Potential

- High Potential
- Moderate Potential
- Low Potential
- Not Rated
- Not Applicable

Soil Erosion Potential by Wind

- Low Risk Factor
- Moderate Risk Factor
- High Risk Factor
- Not rated or Not Available
- Agricultural Area

Existing Transmission Facilities

- 500kV Transmission Line
- 230kV Transmission Line
- 115kV Transmission Line
- Substation

Boundaries

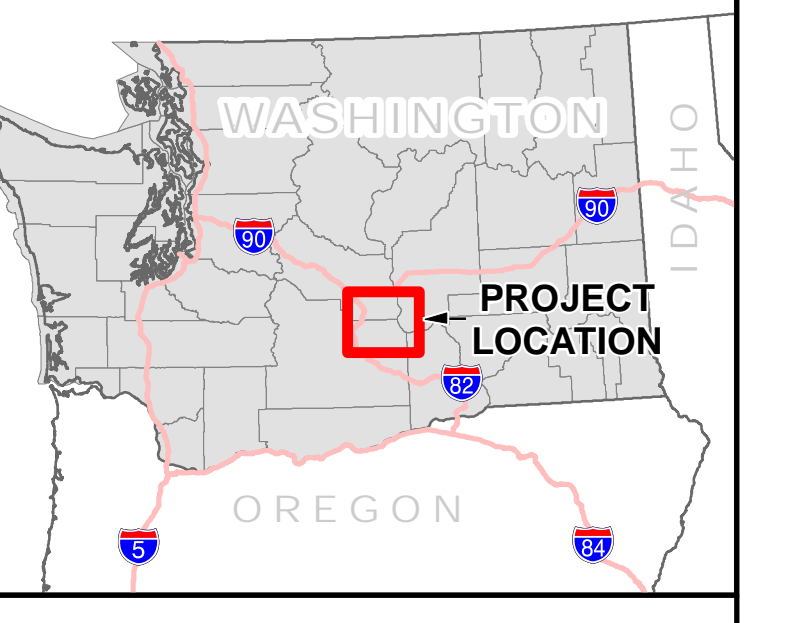
- County
- Township
- City Boundary
- Yakima Training Center

Transportation

- Interstate Highway
- US Highway
- State Route
- Local Access Road

Water Features

- River or Perennial Stream
- Open Water



Date are projected in UTM Zone 10N, NAD83

