



AGENDA – May 3rd

**New Mo' Website
Data Centers**

Memo on Reporting Savings to Utilities



ETHAN

MANTHEY

HELLO

my name is



ETHAN

MANTHEY

Mo'.com

ENTER A WORLD OF YOUR IMAGINATION!

Data Centers

Why should we

CARE?



405aMW

7th Plan 2017

Embedded Data Center Load



55aMW

Savings Target

With no program in place to capture it

7th Plan Potential, 2016-2021

So what is a data center?



Closets

Server Room





Localized Data Centers

Mid-Tier Data Centers





Co-Location, 'Colos'

Enterprise









What they all have in **common**



Priorities
Security
Reliability
Efficiency

IT Equipment

- Servers
- Storage
- Networking (communications)

HVAC and Infrastructure

- Cooling
- Power management



IT Equipment

- Servers
- Storage
- Networking (communications)

HVAC and Infrastructure

- Cooling
- Power management

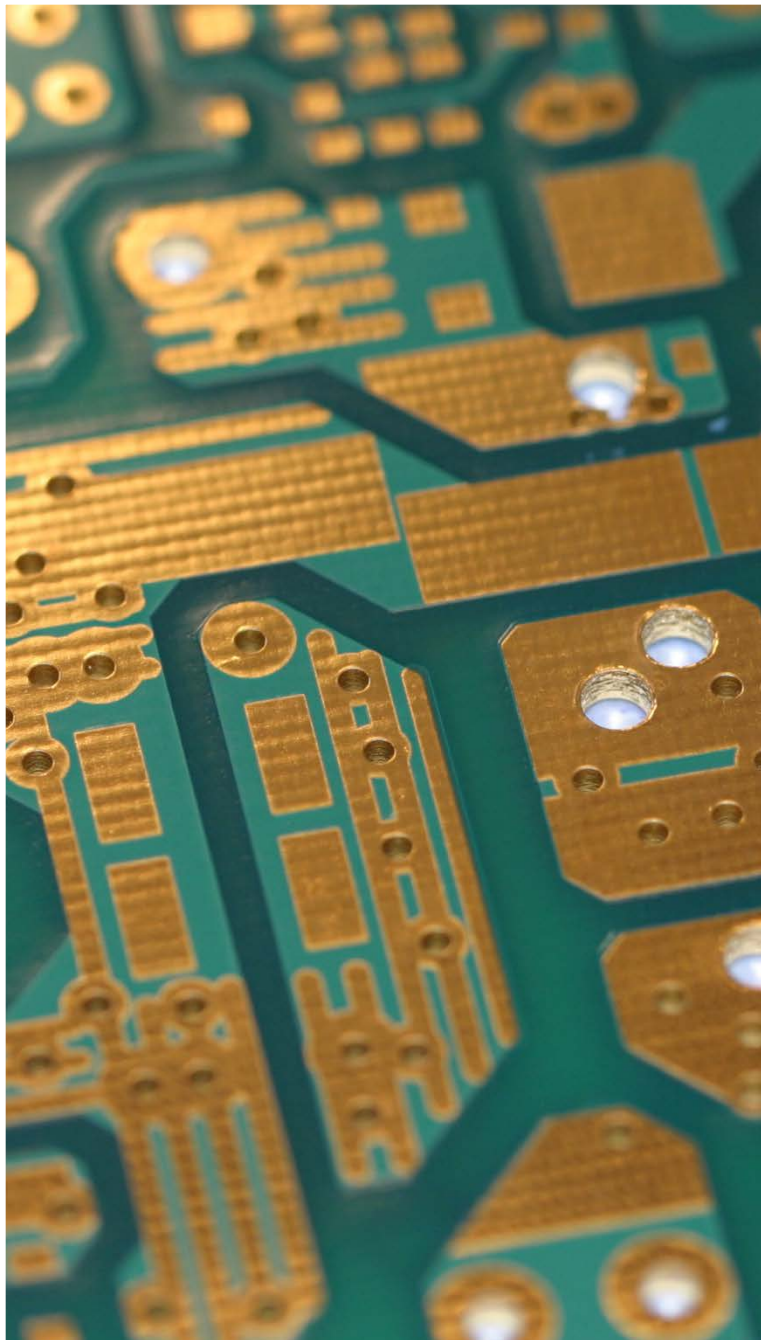


IT Equipment

- Servers
- Storage
- Networking (communications)

HVAC and Infrastructure

- Cooling
- Power management



IT Equipment

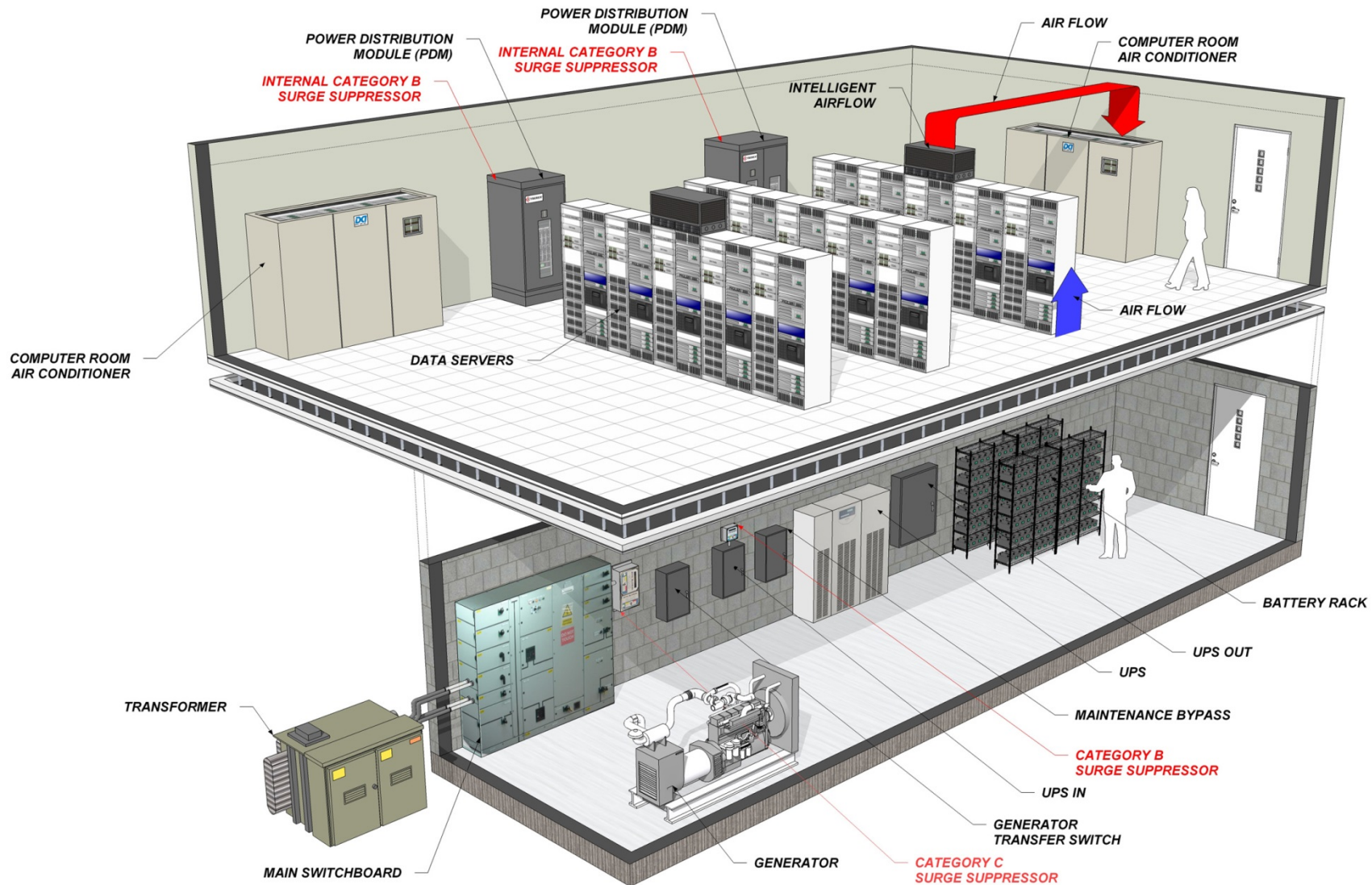
- Servers
- Storage
- Networking (communications)

HVAC and Infrastructure

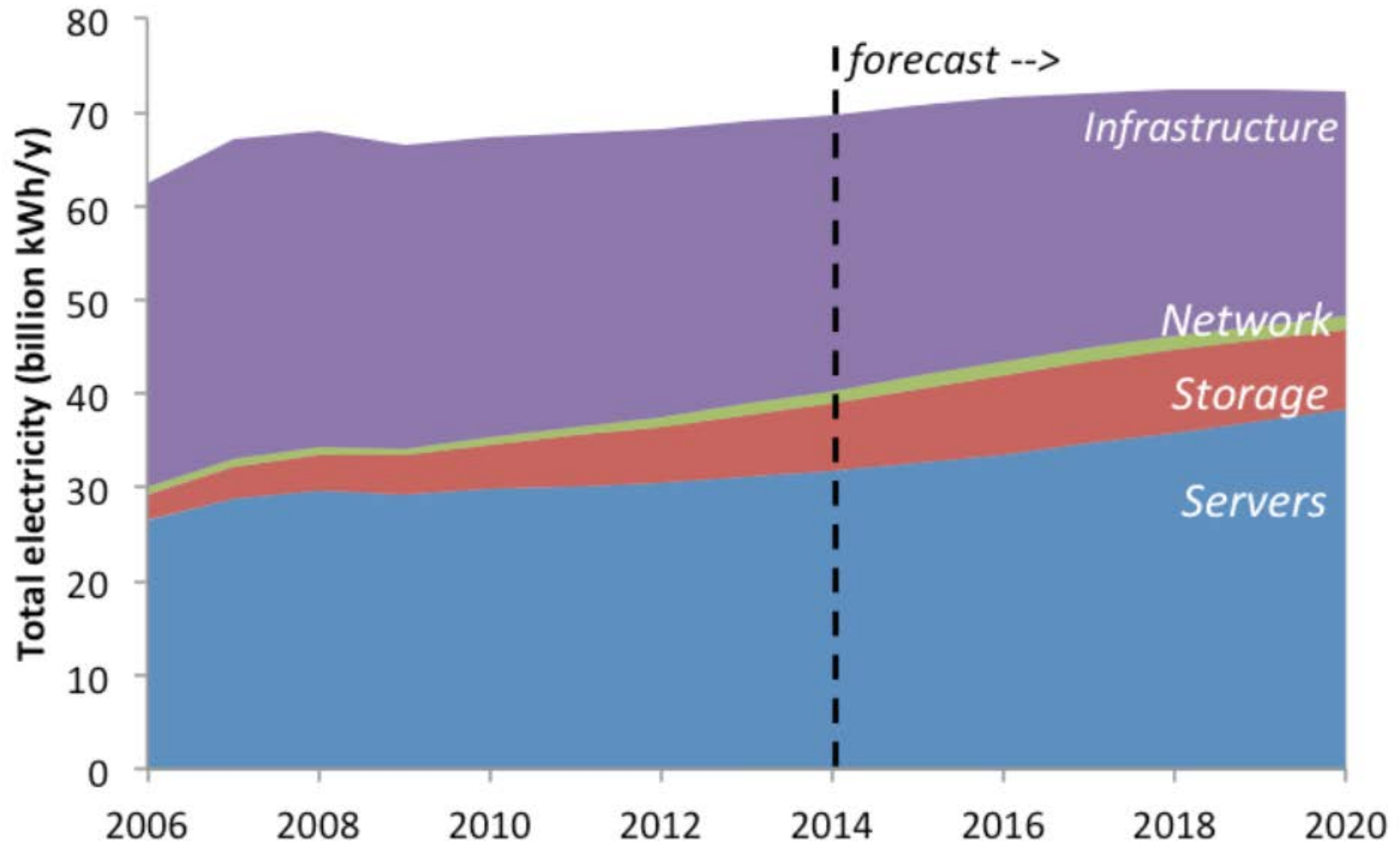
- Cooling
- Power management

Computer Wattage → BTUs

IT and Infrastructure



Consumption Nationally

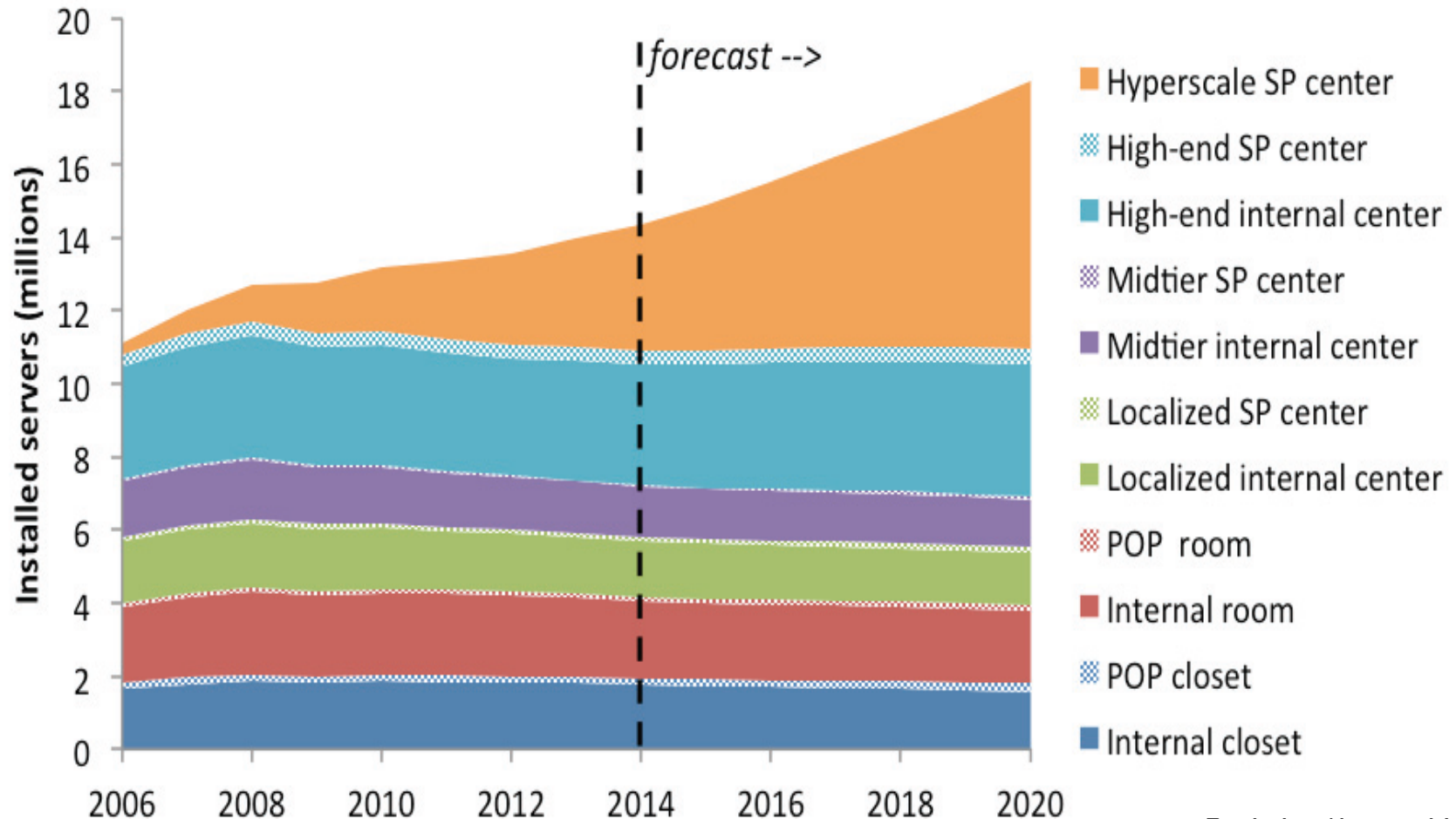




Data Centers in the PNW

Enterprise	???
Mid-Tier	500
Localized	700
Server Rooms	20,000
Server Closet	16,233

Trend to Enterprise DCs





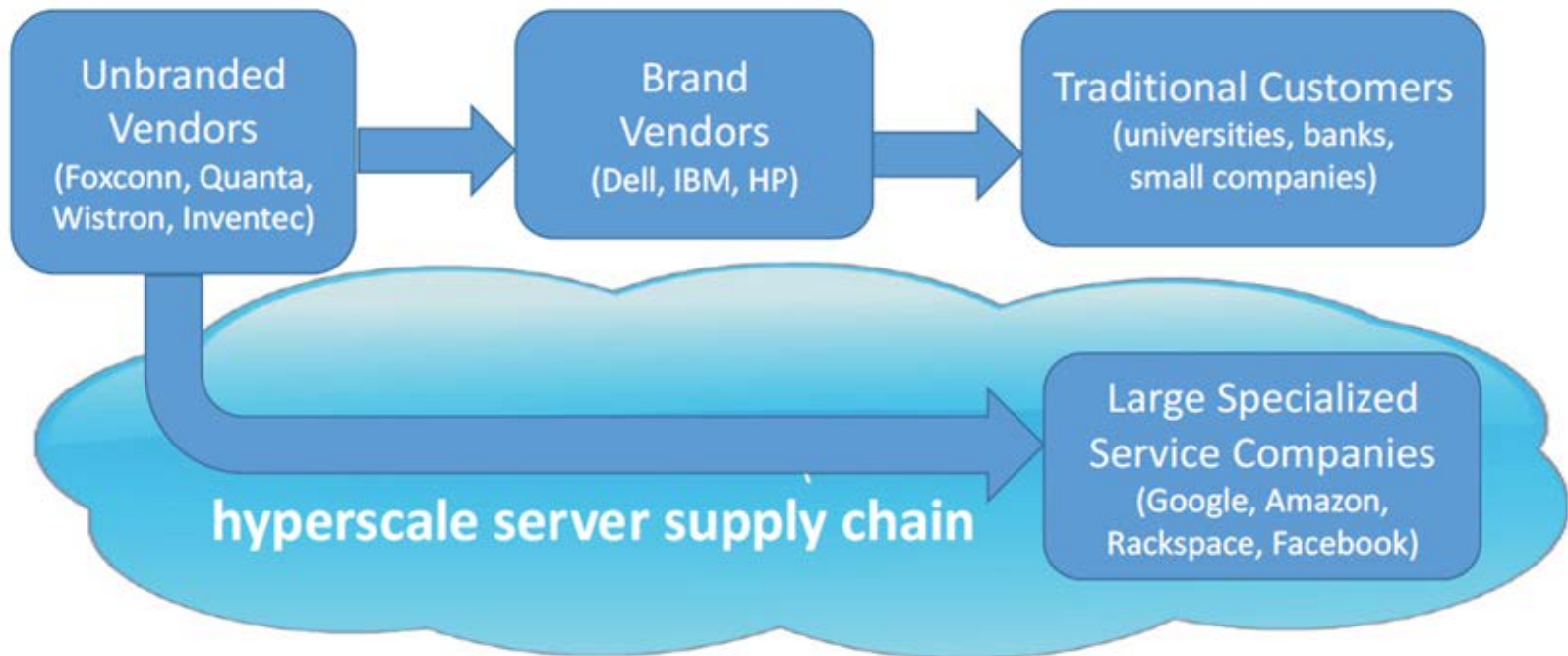
“Moving to the cloud”

... just means using someone else's computer



Supply Chain

Our understanding of the supply chain is pretty basic





Market Actors

Supply Chain Market Actors

- Manufacturers, VARs (Value Added Reseller), IT service providers, System integrators

Data Center Actors

- Facilities Manager, IT Manager, CFO
- Good information on decision-making process at DC

Next Month
EE in the DC

The image features three concentric rectangular frames. The outermost frame is red, the middle frame is green, and the innermost frame is blue. The text "Questions?" is centered within the blue frame.

Questions?

Decision Memo Released

RTF Market

Analysis subcommittee

Email: RTFAdmin@NWCouncil.org

EFX

Efficiency Exchange May 9-10



EFX

Adapting Lighting Programs in a Changing Market

DAY 1 - 5/9 @ 1:30pm



EFX

**Making it to the Big Leagues: How
National Accounts Influence Efficiency**

DAY 2 - 5/10 @ 1:00pm

Coming Soon!

June 1st

Residential Lighting Brownbag



THX!

Thanks for coming!

Join us next month – June 7th