



Preemption Process Flow Diagram

Version 2.0

2/2/2024

This document provides a simplified visual representation of the overall Preemption and ROFR process that is fully detailed by the NAESB Wholesale Electric Quadrant (WEQ) standards in booklet WEQ-001-25. The flow diagrams depict the software processes that carry out the policies set forth the [Preemption of Short-Term Transmission Service business practice](#). Refer to the business practice for full details or submit questions to tblresdesk@bpa.gov.

Table of Contents

A. Where does PCM fit.....	1
B. Three Major Processes of PCM	2
C. Evaluate Challenger and Possible Defenders	3
D. Execute the Preemption/ROFR Process	4
E. Complete Final Actions Based upon Challenger Response	5



BONNEVILLE POWER ADMINISTRATION

A. Where does PCM fit

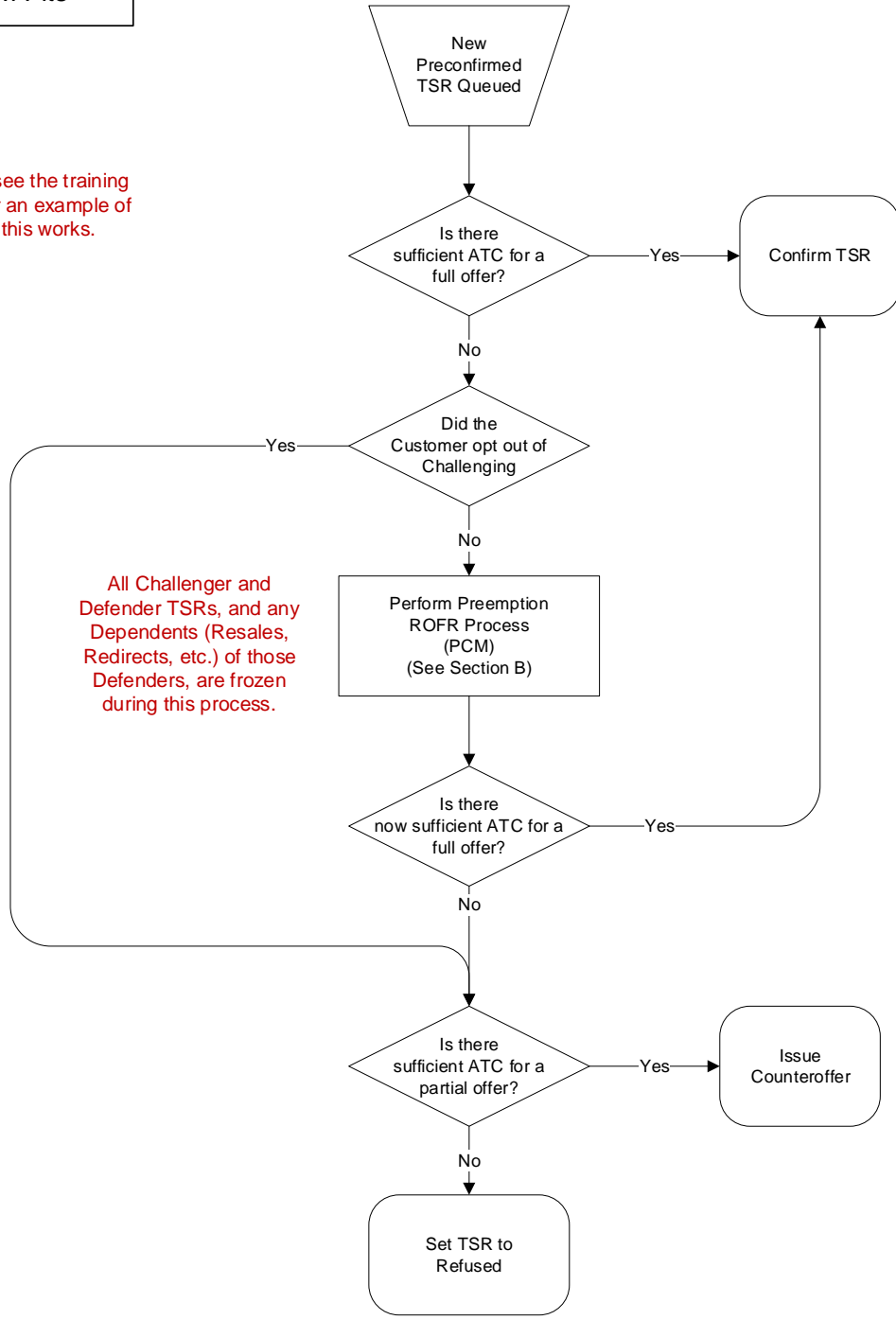
When an incoming TSR encounters a path that is constrained, PCM checks to see if there are lower priority TSRs or reservations that, if preempted, could free up capacity for the incoming TSR. If so, the Preemption and ROFR is initiated.

PCM Process Flows
Level 1 Overview

Where PCM Fits

Where PCM Fits

Please see the training video for an example of how this works.

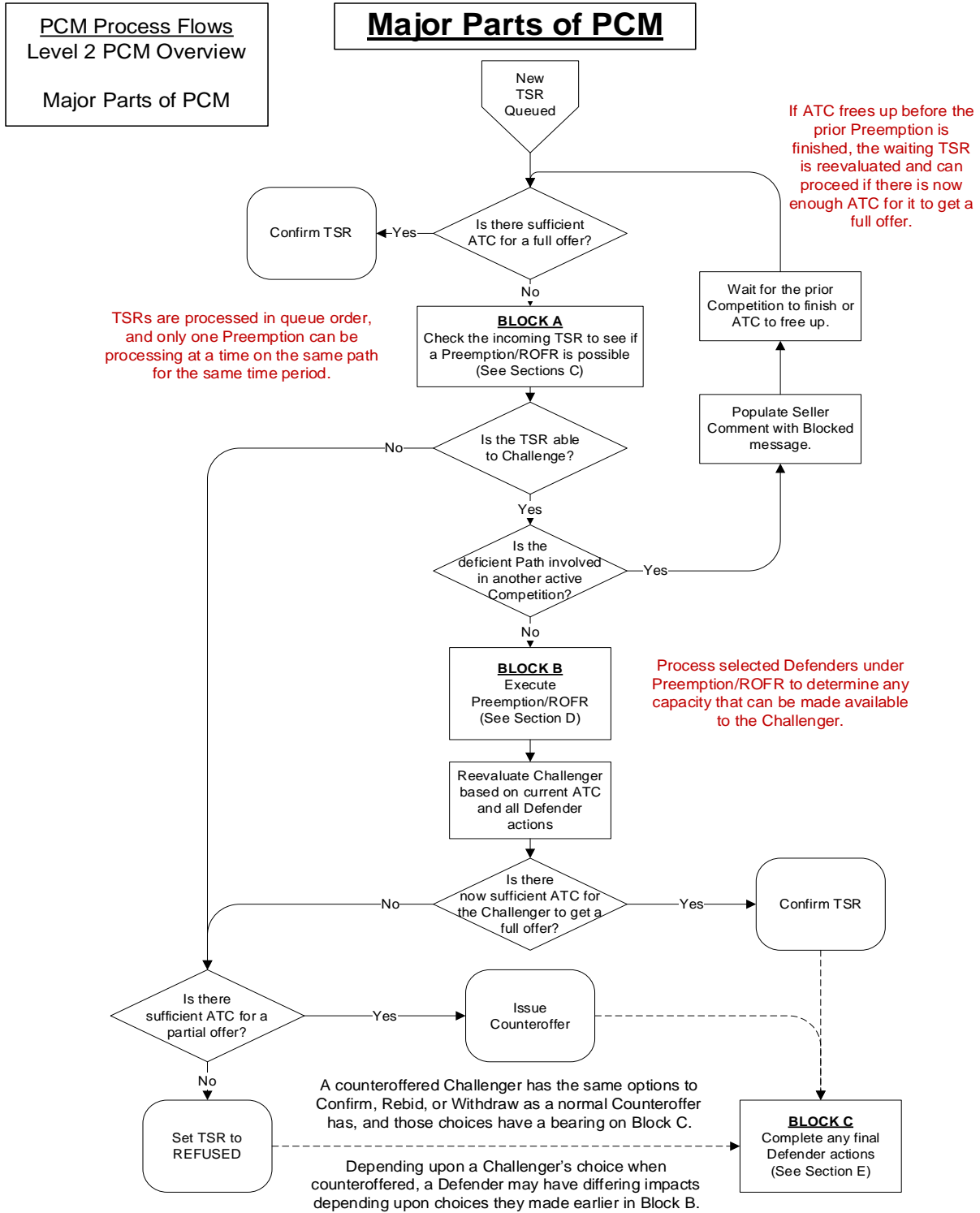




BONNEVILLE POWER ADMINISTRATION

B. Three Major Processes of PCM

1. Evaluate Challenger and possible Defenders for feasibility (Process Flow Block A).
2. Execute the Preemption and ROFR process (Process Flow Block B).
3. Complete final actions (Process Flow Block C).





BONNEVILLE POWER ADMINISTRATION

C. Evaluate Challenger and Possible Defenders

Evaluate the Challenger to see if it is eligible. Identify lower priority TSRs and conditional reservations as potential Defenders. Select those that will improve the offer to the Challenger. Determine if a Preemption/ROFR process is feasible to move forward.

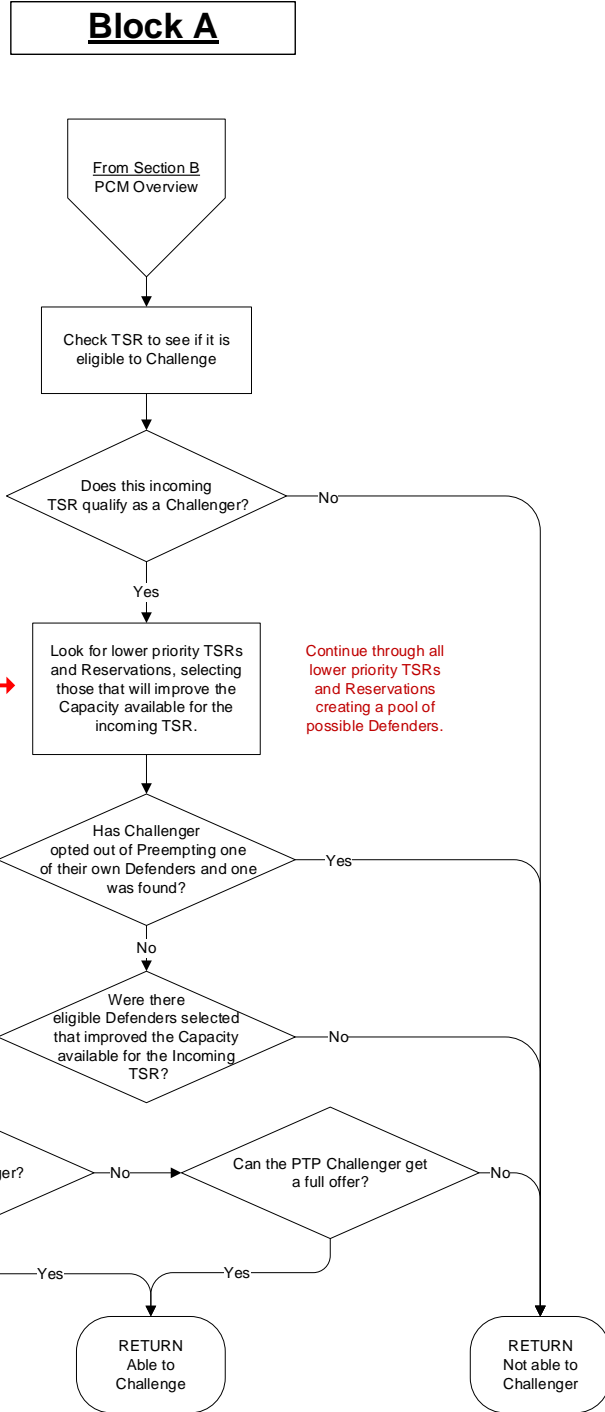
PCM Process Flows
Level 3, Block A

Evaluate the incoming TSR to see if it can Challenge a lower priority TSR or Reservation for their Capacity, then look for possible Defenders

- Preconfirmed.
- No leading or trailing zeros.
- Not profiled if PTP (NT can be profiled).
- Must be Attested if SAMTS.
- Enough time to complete per the BP Table B and C.
- Has not opted out of challenging.

- Defender Selection Criteria
- Defender is Conditional.
 - Defender is a lower priority than the Challenger.
 - Defender will provide capacity to the Challenger on all deficit paths.
 - ROFR Defender has enough time and available ATC to exercise ROFR.
 - Defender will not be impacted by more than 105% of that given to Challenger.
 - Non-firm PTP Defenders must be the same Service as the Challenger.
 - Secondary Hourly PTP (1-NS) and Non-firm NT (6-NN) cannot be a Challenger or Defender.

Note:
Conditional = Vulnerable
Unconditional = Safe



The incoming TSR is able to Challenge

The incoming TSR is NOT able to Challenge



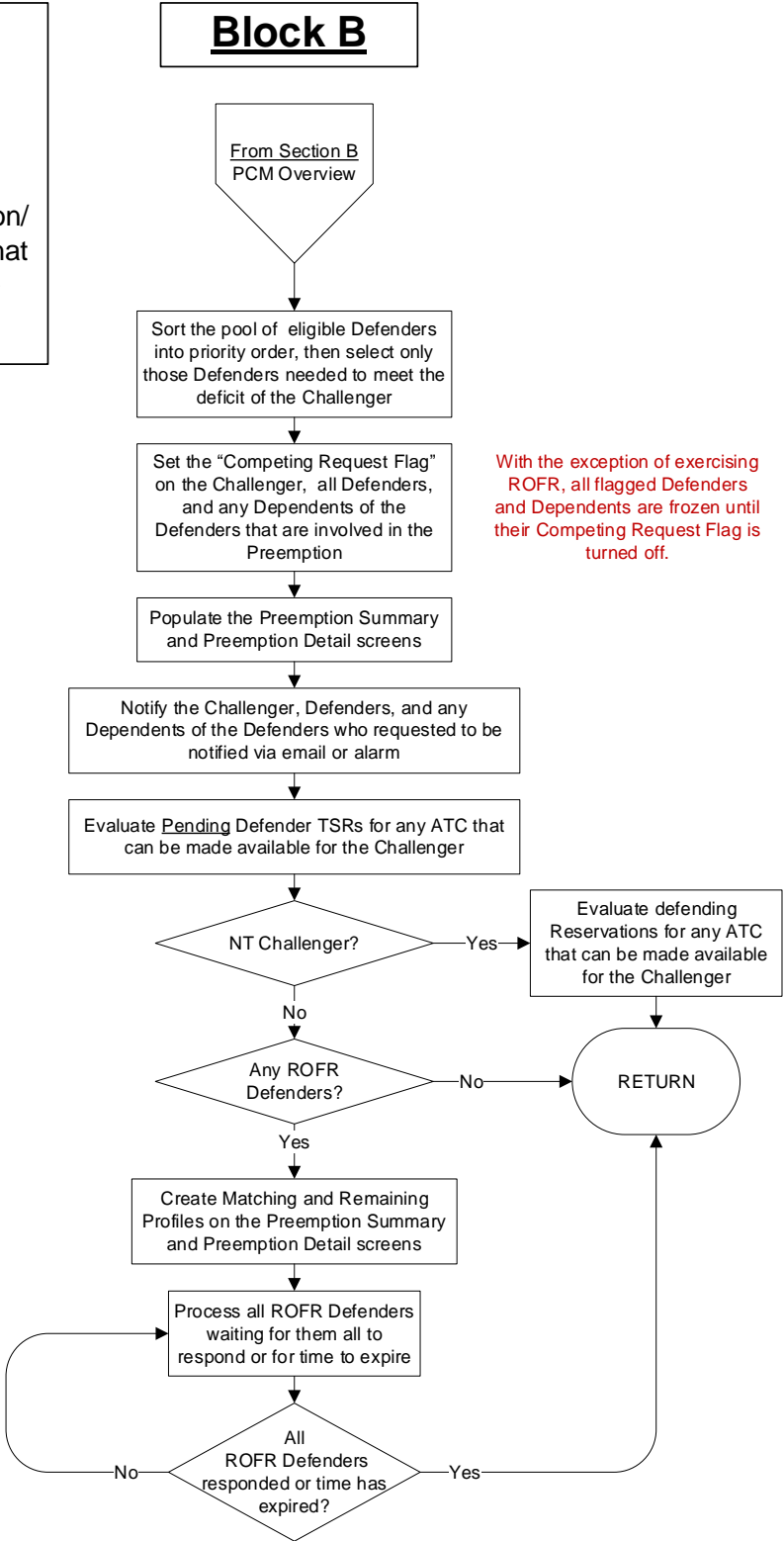
BONNEVILLE POWER ADMINISTRATION

D. Execute the Preemption/ROFR Process

Process through selected Defenders executing Preemption/ROFR to determine any capacity that can be made available to the Challenger.

PCM Process Flows
 Level 3, Block B
 Execute Preemption/ROFR

Process through selected Defenders executing Preemption/ROFR to determine any ATC that can be made available to the Challenger

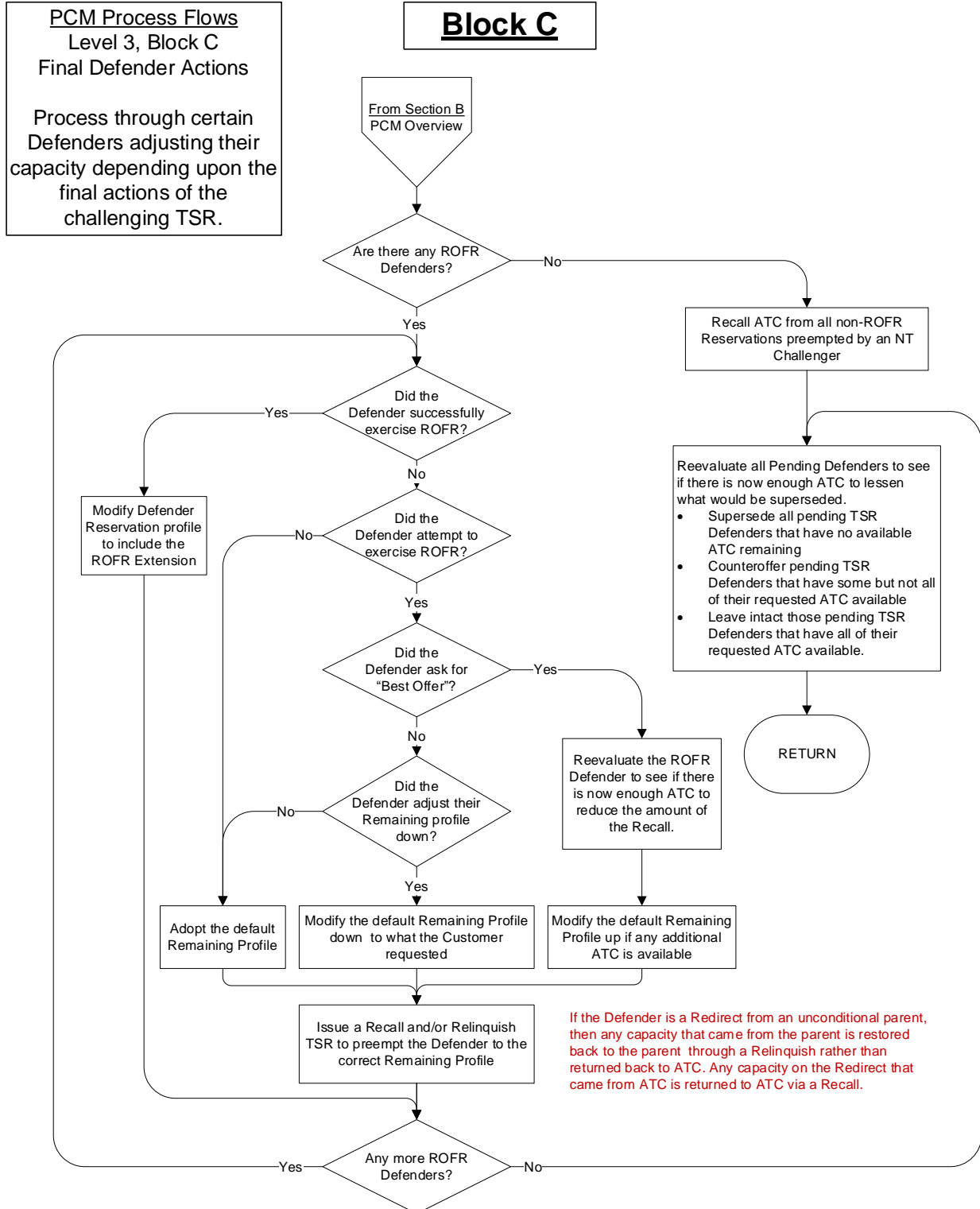




BONNEVILLE POWER ADMINISTRATION

E. Complete Final Actions Based upon Challenger Response

Grant new capacity for successful ROFRs or recall capacity for ROFRs that are unsuccessful. The capacity preempted from some Defenders is taken in response to the final action by the Challenger.





BONNEVILLE POWER ADMINISTRATION

Revision History

Version	Date	Change
1.0	03/18/22	Initial draft diagram for posting. Block C.1 needs to be finished.
2.0	02/02/24	Removed section C.1 and added that information to Section C instead.