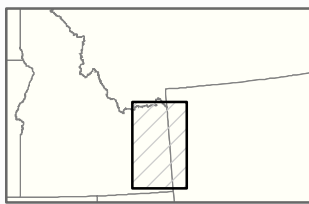


Eastern Idaho Transmission Line Network

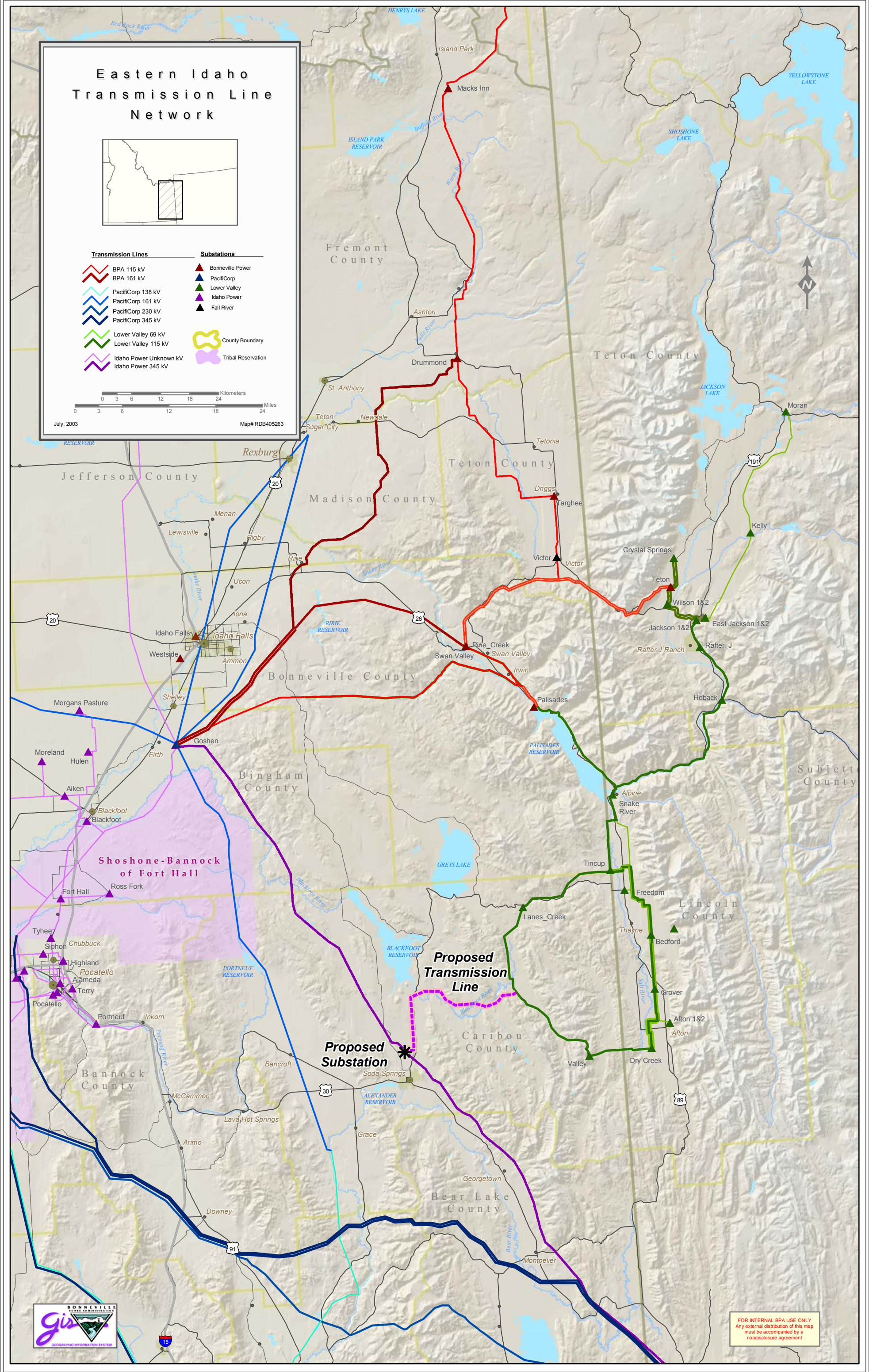


- | Transmission Lines | Substations |
|------------------------|--------------------|
| BPA 115 kV | Bonneville Power |
| BPA 161 kV | PacifiCorp |
| PacifiCorp 138 kV | Lower Valley |
| PacifiCorp 161 kV | Idaho Power |
| PacifiCorp 230 kV | Fall River |
| PacifiCorp 345 kV | County Boundary |
| Lower Valley 69 kV | Tribal Reservation |
| Lower Valley 115 kV | |
| Idaho Power Unknown kV | |
| Idaho Power 345 kV | |



July, 2003

Map# RDB405263



Proposed Transmission Line

Proposed Substation

FOR INTERNAL BPA USE ONLY
Any external distribution of this map must be accompanied by a nondisclosure agreement

