

## **Appendix B1**

---

### **Right-of-Way Tower Configuration Tables and Figures – Central Alternative using Central Option 1**



**Table B1-1 Central Alternative Tower Configurations (Preferred Alternative)**

Segment	Segment Length (miles)	Section (Tower to Tower)	Additional Right-of-Way Required (Feet)	Existing BPA Right-of-Way Configuration	Proposed Action	Proposed Right-of-Way Configuration	Figure
B	1.0	B/1-B/6	150			New 500-kV line	B-1
F	15.8	F/1-F/75	150			New 500-kV line	B-1
G	1.67	G/1-G/8	150			New 500-kV line	B-1
H	1.2	H/1-H/8	150			New 500-kV line	B-1
10	7.9	10/1-10/34	150			New 500-kV line	B-1
12	5.0	12/1-12/20	150			New 500-kV line	B-1
15	1.9	15/1-15/9	150		150 feet new right-of-way on north side of existing Pacificorp right-of-way to accommodate new 500-kV line.	New 500-kV line Pacificorp Merwin-Kalama-Cardwell SC 115-kV line	B1-1
23	1.3	23/1-23/7	150		150 feet new right-of-way on north side of existing Pacificorp right-of-way to accommodate new 500-kV line.	New 500-kV line Pacificorp Merwin-Kalama-Cardwell SC 115-kV line	B1-1
L	1.7	L/1-L/5	150			New 500-kV line	B-1
		L/5-L/9	150		150 feet new right-of-way on south side of existing Pacificorp right-of-way to accommodate new 500-kV line.	Pacificorp Merwin-Yale SC 115-kV line on Pacificorp right-of-way New 500-kV line	B-28
18	7.2	18/1-18/22	150		150 feet new right-of-way on south side of existing Pacificorp right-of-way to accommodate new 500-kV line.	Pacificorp Merwin-Yale SC 115-kV line on Pacificorp right-of-way New 500-kV line	B-5
		18/22-18/32	150			New 500-kV line	B-1
28	6.0	28/1-28/27	150			New 500-kV line	B-1
V	5.9	V/1-V/27	150			New 500-kV line	B-1
P	8.7	P/1-P/39	150			New 500-kV line	B-1
35	2.5	35/1-35/15	150			New 500-kV line	B-1
T	0.4	T/1-T/3	150			New 500-kV line	B-1
49	2.7	49/1-49/7	150			New 500-kV line	B-1
		49/7-49/13	0	North Bonneville-Troutdale No. 2 SC 230-kV line North Bonneville-Ross No. 1 SC 230-kV line	Remove about 16 existing 230-kV towers and replace with DC 230-kV line parallel to new 500-kV line	New 500-kV line North Bonneville-Troutdale No. 1/North Bonneville-Ross No. 1 DC 230-kV line	B1-2
51	2.1	51/1-51/11	0	North Bonneville-Troutdale No. 1 SC 230-kV line North Bonneville-Troutdale No. 2 SC 230-kV line	Remove about 20 existing 230-kV towers and replaced with DC 230-kV line parallel to new 500-kV line	North Bonneville-Troutdale No. 1&2 DC 230-kV line New 500-kV line	B-22
52	4.8	52/1-52/2	0	North Bonneville-Troutdale No. 1 SC 230-kV line North Bonneville-Troutdale No. 2 SC 230-kV line	Remove about 4 230-kV towers and replace with DC 230-kV line parallel to new 500-kV line	North Bonneville-Troutdale No. 1&2 DC 230-kV line New 500-kV line	B-23
		52/2-52/9		North Camas-Oak Park SC 115-kV line North Bonneville-Troutdale No. 1 SC 230-kV line North Bonneville-Troutdale No. 2 SC 230-kV line	Remove about 14 230-kV towers and replace with DC 230-kV line parallel to new 500-kV line	North Camas-Oak Park SC 115-kV line North Bonneville-Troutdale No. 1&2 DC 230-kV line New 500-kV line	B-23
		52/9-52/13		North Bonneville-Troutdale No. 1 SC 230-kV line North Bonneville-Troutdale No. 2 SC 230-kV line	Remove about 8 existing 230-kV towers and replace with DC 230-kV line parallel to new 500-kV line	North Bonneville-Troutdale No. 1&2 DC 230-kV line New 500-kV line	B-23
		52/13-52/19		North Bonneville-Troutdale No. 1 SC 230-kV line North Bonneville-Troutdale No. 2 SC 230-kV line	Remove about 10 existing 230-kV towers and replace with DC 230-kV line parallel to new 500-kV line using special river crossing towers.	North Bonneville-Troutdale No. 1&2 DC 230-kV line New 500-kV line	B1-3
		52/19-52/23		North Bonneville-Troutdale No. 1 SC 230-kV line North Bonneville-Troutdale No. 2 SC 230-kV line	Remove about 6 existing 230-kV towers and replace with DC 230-kV line parallel to new 500-kV line using special river crossing towers	North Bonneville-Troutdale No. 1&2 DC 230-kV line New 500-kV line Georgia Pacific James River East	B1-3

**Table B1-1 Central Alternative Tower Configurations (Preferred Alternative)**

Segment	Segment Length (miles)	Section (Tower to Tower)	Additional Right-of-Way Required (Feet)	Existing BPA Right-of-Way Configuration	Proposed Action	Proposed Right-of-Way Configuration	Figure
						Georgia Pacific James River West Pacificorp Troutdale-Runyan 115-kV/Troutdale-James River 69-kV DC line	
		52/23-52/26				New 500-kV line	B-1

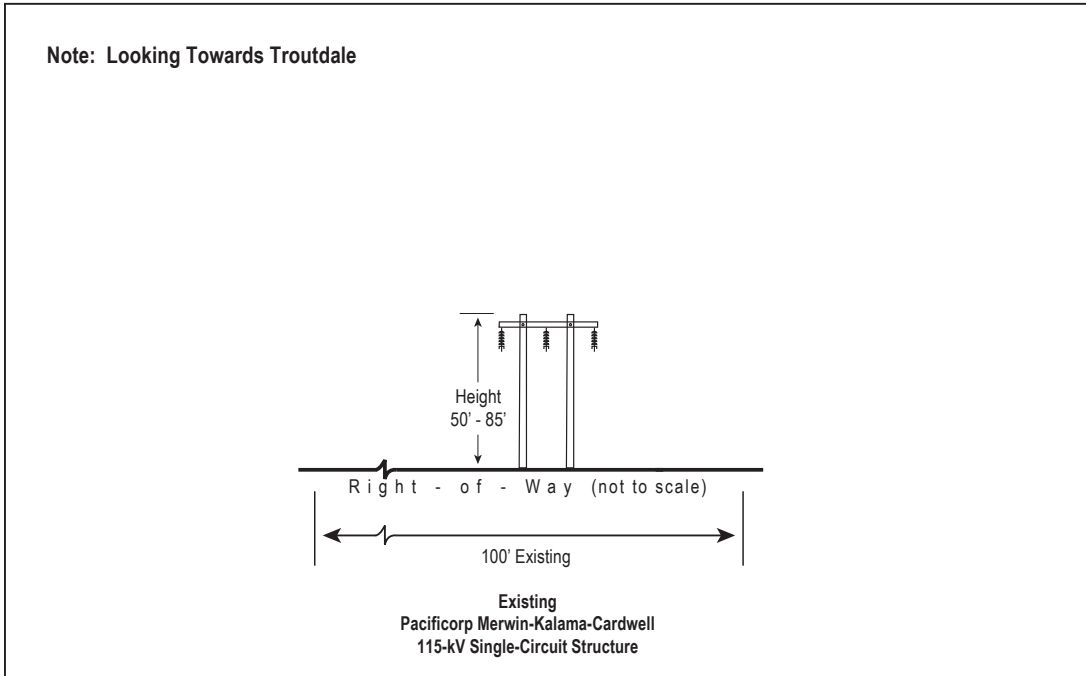
SC - Single Circuit  
DC - Double Circuit  
TC - Triple Circuit

**Table B1-2 Central Option 1 Tower Configurations (Preferred Alternative)**

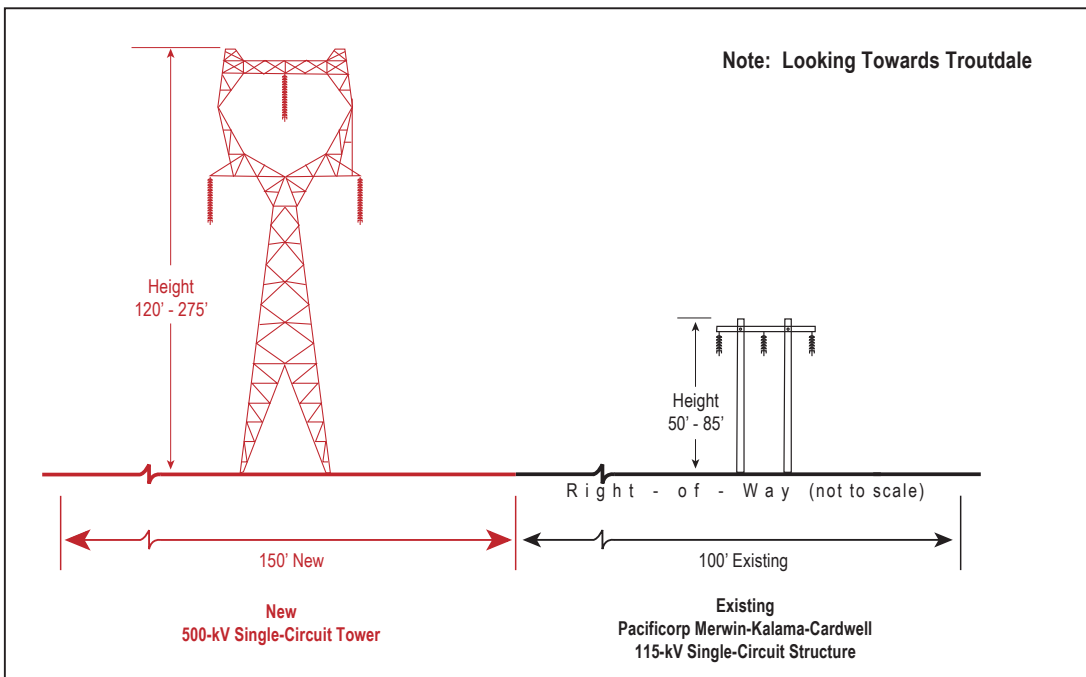
Segment	Segment Length (miles)	Section (Tower to Tower)	Additional Right-of-Way Required (Feet)	Existing BPA Right-of-Way Configuration	Proposed Action	Proposed Right-of-Way Configuration	Figure
A	2.5	A/1-A/10	125	Longview-Chehalis No. 1 SC 230-kV line Napavine-Allston No. 1 SC 500-kV line Longview-Chehalis No. 3 SC 230-kV line Paul-Allston No. 2 SC 500-kV line	125 feet new right-of-way needed on east side of existing right-of-way to accommodate new 500-kV line	New 500-kV line Longview-Chehalis SC. 230-kV line Napavine-Allston No. 1 SC 500-kV line Longview-Chehalis No. 3 SC 230-kV line Paul-Allston No. 2 SC 500-kV line	B-24

# Figure B1-1 Route Segments 15 and 23 Towers 15/1-15/9, 23/1-23/7

Existing. Single-Circuit Pacificorp Merwin-Kalama-Cardwell Line



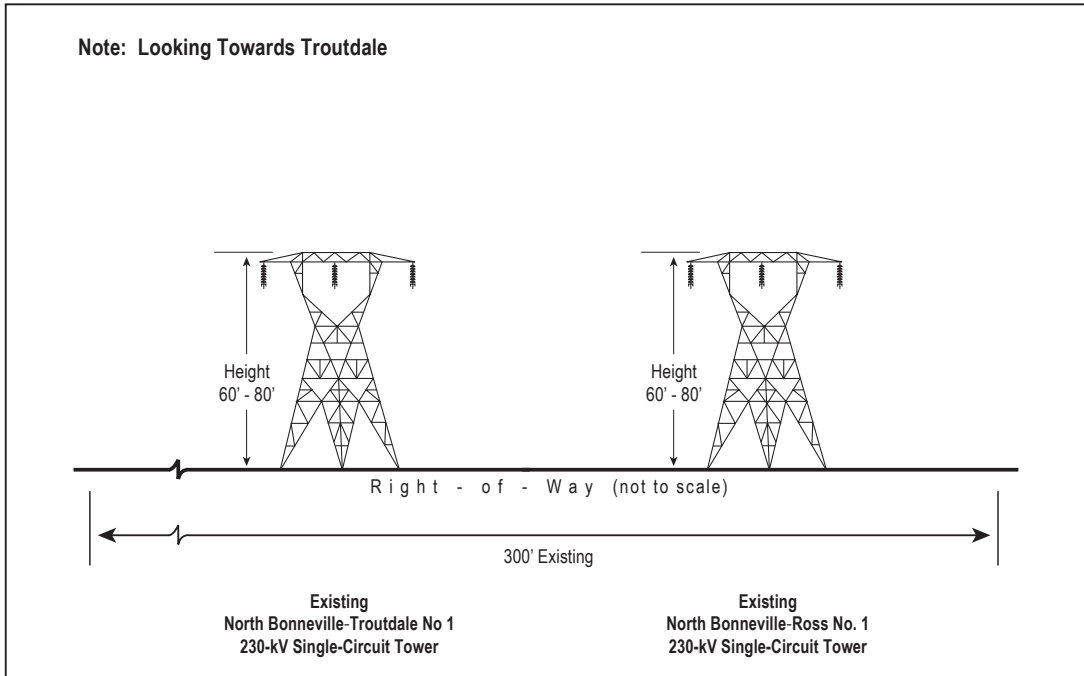
## Proposed. New Single-Circuit Tower Parallel to the Pacificorp Merwin-Kalama-Cardwell Line



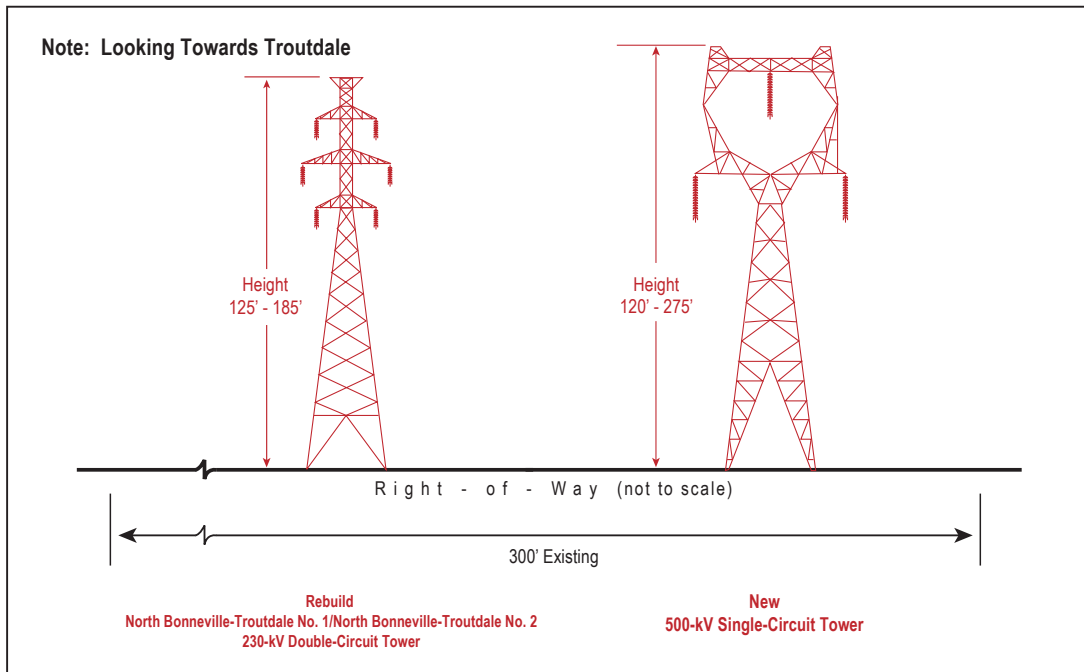
Some towers not to scale

# Figure B1-2 Route Segment 49 Towers 49/7-49/13\*

Existing. Single-Circuit North Bonneville-Troutdale No. 1 Line Parallel to the Single-Circuit North Bonneville-Ross No. 1 Line



**Proposed.** New Single-Circuit Tower Parallel to the New Double-Circuit Rebuild Tower for North Bonneville-Troutdale No. 1 and North Bonneville-Ross No. 1 Lines

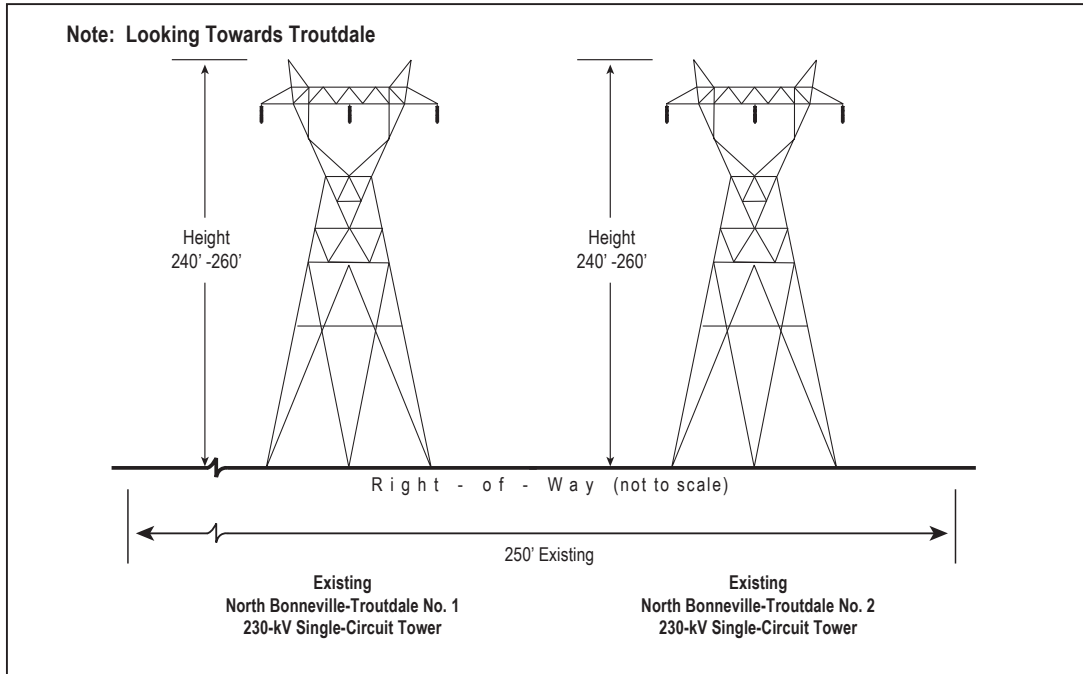


\* Note: Towers 49/1-49/7 will require 150 feet of new right-of-way. See Figure B-1 in Appendix B for more information.

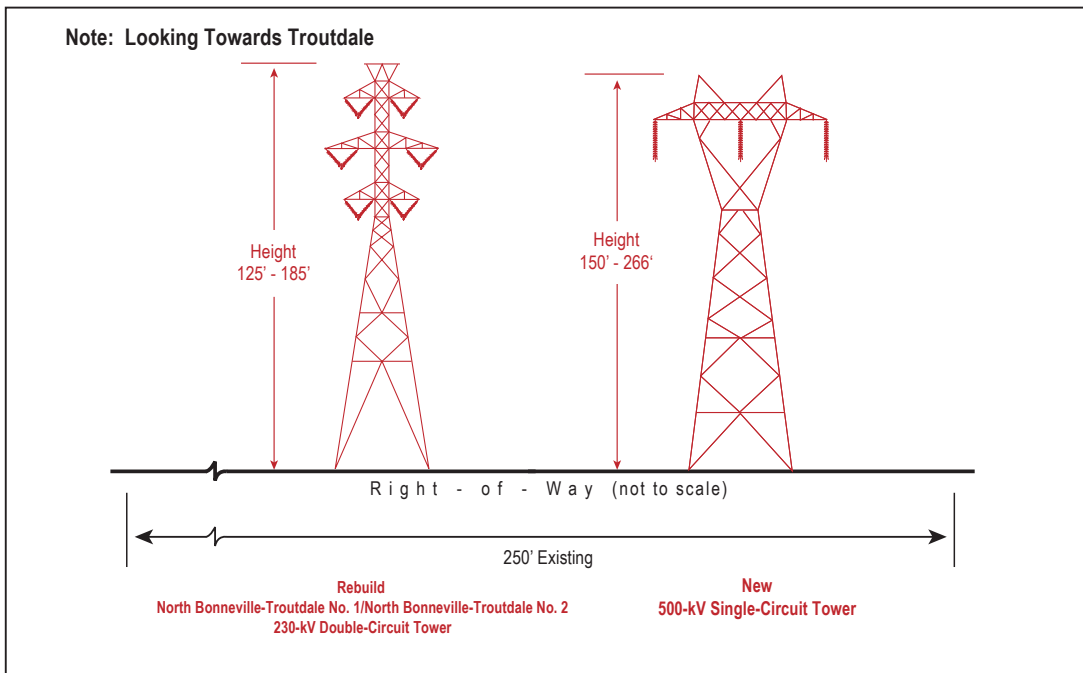
Some towers not to scale

# Figure B1-3 Route Segment 52 Towers 52/13-52/19

Existing. Single-Circuit North Bonneville-Troutdale No. 1 and North Bonneville-Troutdale No. 2 Lines



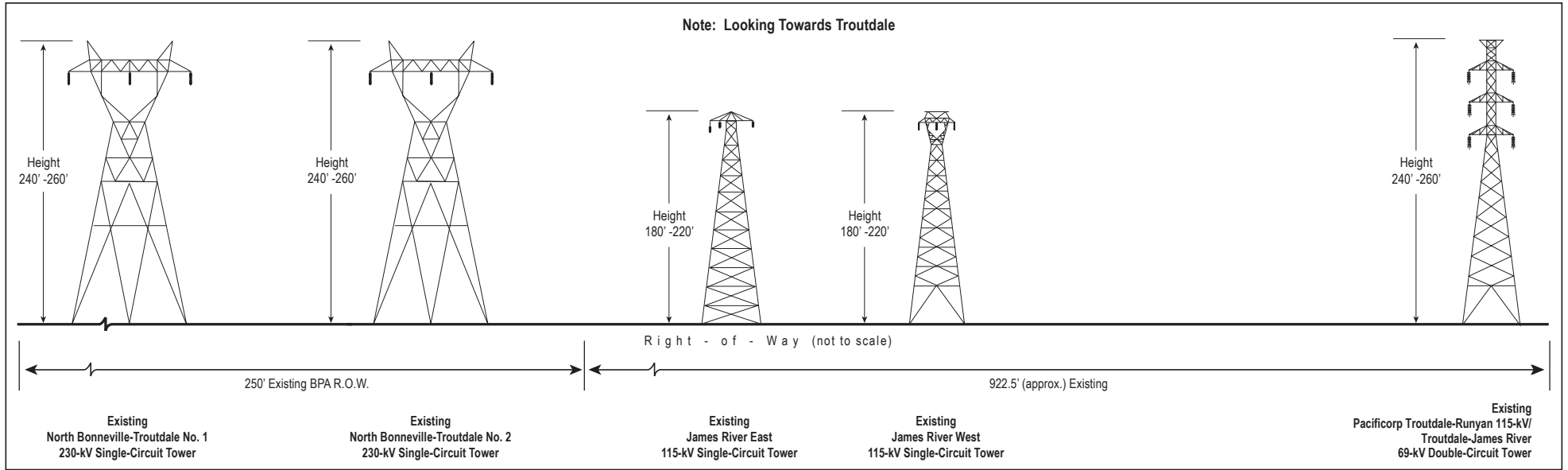
**Proposed.** New Single-Circuit Tower Parallel to the New Double-Circuit Rebuild Tower for North Bonneville-Troutdale No. 1 and No. 2 Lines



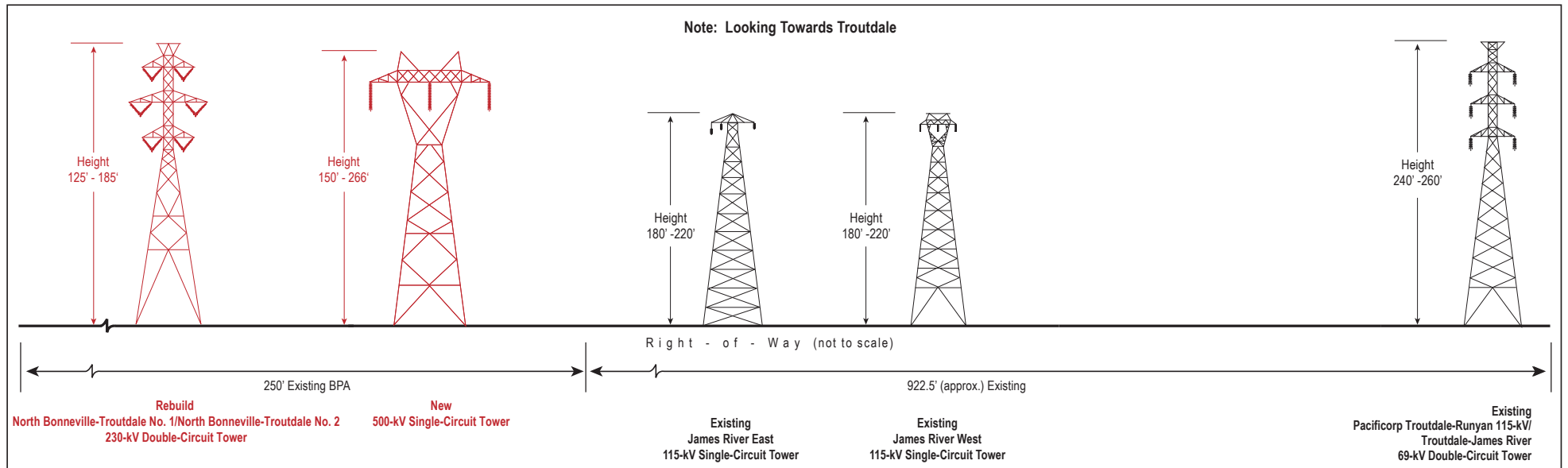
Some towers not to scale

# Figure B1-3 Route Segment 52 (cont.) Towers 52/19-52/22

Existing. Single-Circuit North Bonneville-Troutdale No. 1 Line Parallel to the North Bonneville-Troutdale No. 2 Line



**Proposed.** New Single-Circuit Tower Parallel to the New Double-Circuit Rebuild Tower for North Bonneville-Troutdale No. 1 and No. 2 Lines



Some towers not to scale