

# Energy Smart Reserved Power (ESRP) PROGRAM FY26/27/28 Incentive Application SOLICITATION WEBINAR

May 21, 2025

David J. Lee, CEM | Federal and Agricultural Sector Lead

[djlee@bpa.gov](mailto:djlee@bpa.gov) OR [ESRP Program](#)

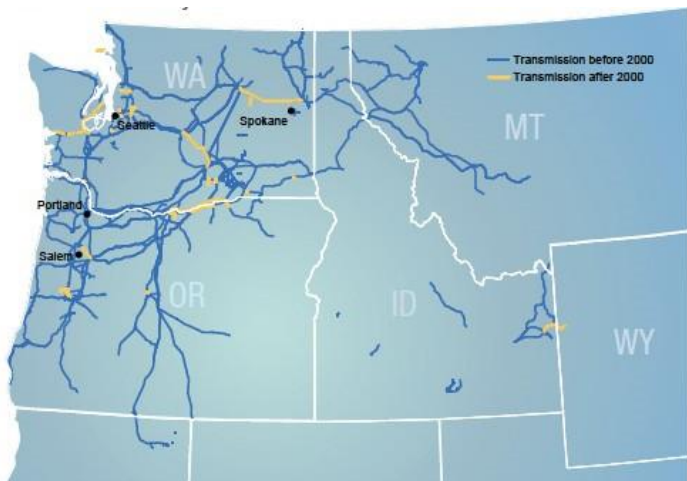
# AGENDA

- ESRP Program overview refresh
- How to participate in the FY26/27/28 incentive application process.
- Incentive and measure changes
- FY26 budget \$\$ and incentive application timeline
- Available resources to aid you in the application process
- Q&A



Aerial view of Minidoka Dam  
South central Idaho

# WHO IS BPA?



Owens, operates and maintains 15,000 circuit miles of transmission

- Non-profit federal power marketing administration(US DOE Agency) based in the Pacific Northwest
- Markets wholesale energy from 31 dams operated/owned by US ACE & US BOR
- Provides 28% of electricity consumption in the PNW (nearly carbon free)
- Power Act of 1980 expanded BPA's charter to acquire least cost resource (LCR = Energy Efficiency)

# MEET THE ESRP PROGRAM TEAM

- David J. Lee - Federal Sector Lead/Program Manager
- TJ Sharkey - Tech Lead, Field Engineer (Eastern WA)
- Dan Dellitt – Business Analyst/Program Support
- Dick Stroh – Field Engineer (ID)
- Travis Wood – Field Engineer (ID)
- Larry King – Field Engineer (ID)
- Nia Alvarado – Field Engineer Intern
- Maggie Bagan- Marketing Support

Note: After 39 years! with BPA, Tom Osborn has recently retired.

# ELIGIBLE ESRP PROGRAM PARTICIPANTS

## CONSUMERS OF RESERVED POWER\*

- 26 Independently operated, federally-charted irrigation districts
- 2 Federally-operated irrigation districts (US Bureau of Indian Affairs)
- 2 Federal Hatcheries (US Fish & Wildlife Service)

## STATION SERVICE FACILITIES

- Some BPA Transmission Facilities, which include:
  - Control Houses
  - Maintenance Shops
  - Yard Lighting
- Federally-owned & operated dams:
  - US Bureau of Reclamation
  - US Army Corps of Engineers

# ACHIEVEMENTS FROM 2016 to 2024

ESRP Program-  
delivered  
incentives

**\$13.2M**



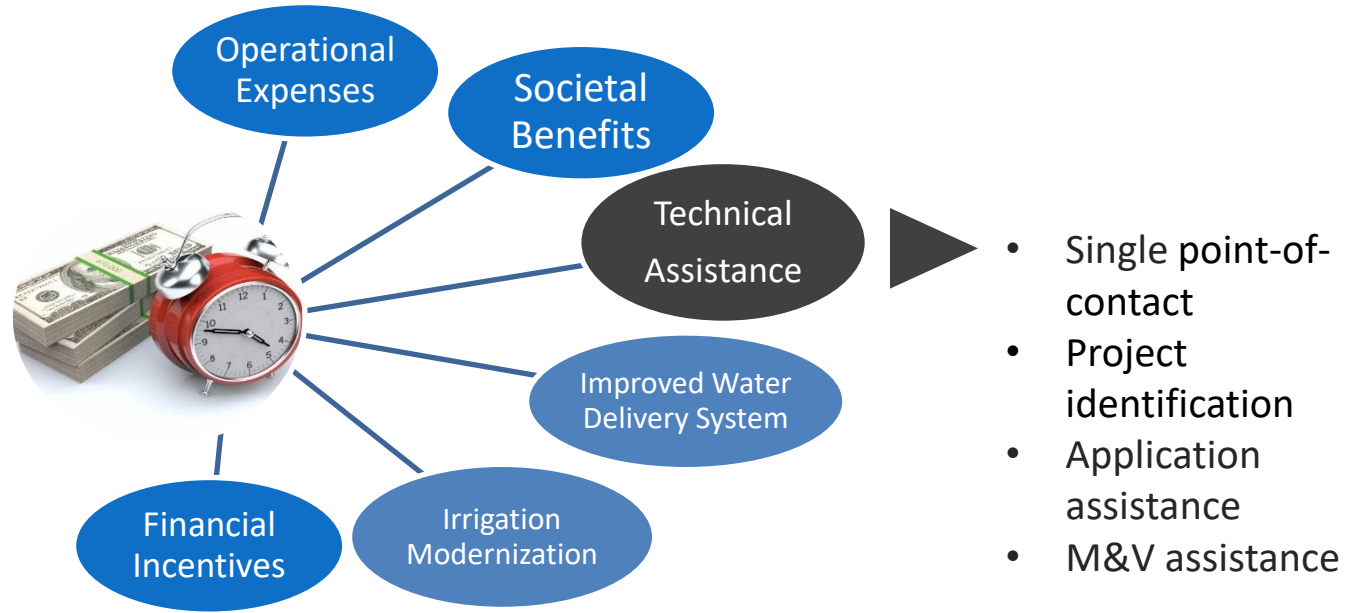
**7.1 aMW**

in energy  
savings

90% of these savings have been attributed  
to Irrigation District participation

**Irrigation Districts have created added generation of  
12.9 aMW (113 MWh) through water delivery improvements**

# PROGRAM BENEFITS



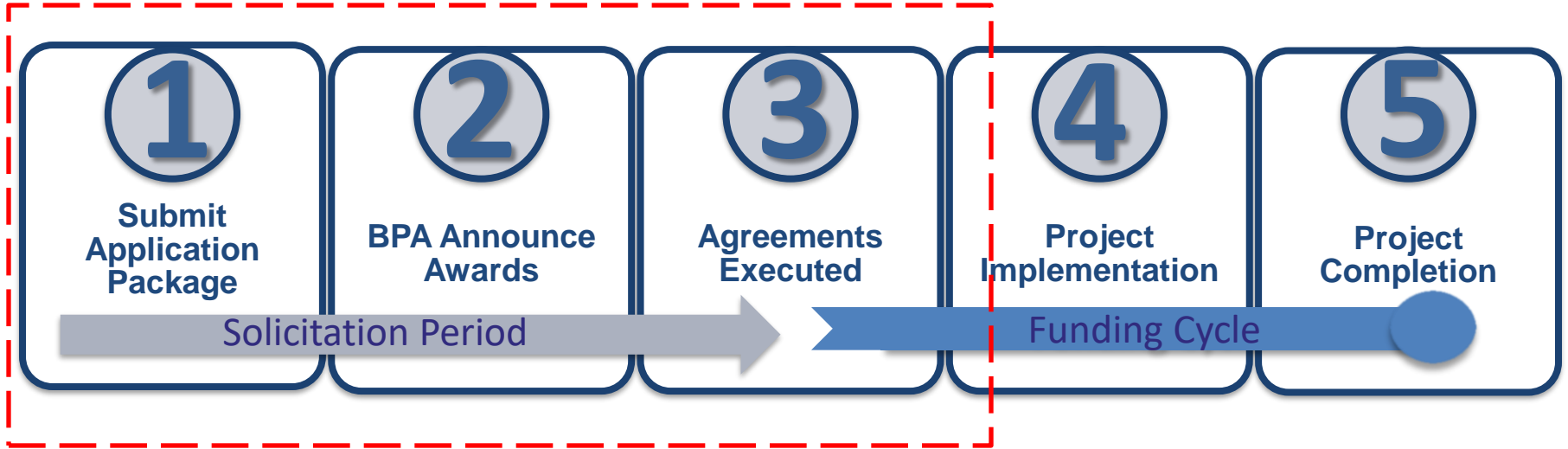
# WHAT IS A SOLICITATION



- BPA is inviting YOU to apply for incentive/rebate\$\$\$
- A competitive application process with deadlines to review, rank, and evaluate applications based on cost-benefit analyses
- Starts prior to the launch of the Funding Cycle from *Open Enrollment to Agreement Execution*



# STEPS TO PARTICIPATE



# STEP 1: INCENTIVE APPLICATION PACKAGE

# 1

## Submit Application Package

- Incentive Application
- Proposal/bid
- Calculator/PIF(s)

- Application Resources available
  - Measure Reference Guide
  - Incentive Rate Reference Table(s)
  - Visit Resources and Tools section >> Getting Started
- Applications must be submitted by deadlines
  - Visit ESRP Program Funding Cycle section for timelines and funding status
- Proposed projects must adhere to program policies
  - Visit **Frequently Asked Question** section for program policies
- *If applicable*, complete Calculators and Project Information Forms (PIFs)
  - *Measure Reference Guide indicates which measures require calculators or PIFs*
  - *Visit Resources and Tools >> Required Support Documents*

# INCENTIVE APPLICATION

## BONNEVILLE POWER ADMINISTRATION

### ESRP Program Incentive Application

The ESRP program budget is renewed annually and is subject to change. Open Enrollment projects with the greatest regional benefit have funding priority, however, funding is not guaranteed. Open Season applications will be reviewed. Open season applications will be reviewed on a first come first served basis once priority awards have been announced.

For more information, visit the [ESRP program website](#)

#### SELECT APPLICATION WINDOW (Choose One):

☐ Open Enrollment Window (first priority funding)

Application must be received by July 31, 2025.

Reserved Power participants only.

☐ Open Season (first-come first-served)

Application should be received by March 06, 2026.

All participants.

A multi-year application represents a project with multiple phases (or components) with completion dates that occur in different funding cycles. Each phase must entail energy efficiency measure(s) with distinct, quantifiable energy savings and project costs. Whereas, a single year application includes one or more measures that will be completed in the same funding cycle.

#### SELECT FUNDING CYCLE\* (Select one for single year application or multiple for a multi-year application):

☐ FY26 (Oct 1, 2025 to Sep 30, 2026)

☐ FY27 (Oct 1, 2026 to Sep 30, 2027)

☐ FY28 (Oct 1, 2027 to Sep 30, 2028)

\* Contingent upon available funding availability.

#### A. APPLICANT INFORMATION

Applicant Entity		Federal TIN	
Address	City	State	Zip
Technical Contact	Phone	Email	
Administrative Contact	Phone	Email	
Agreement Signatory	Phone	Email	

## 2 application types available

- Auto calculate
- Manual for key entry or pen

First....Select Application Window and Funding Cycle

A. Applicant Information

B. Project Proposal

C. Project Savings

D. Project Financials (Part I & II)

E. M&V Plan

F. Applicant Certification



# Tips: (B) Project Proposal

## Project Summary

Enter brief project summary. (1 to 3 sentences)

Optimize Water Delivery System. Project entails: Replace (1) existing pump, (1) replace existing pump with VFD, install canal lining in open ditches, and replace (3) thermostats

## Existing System (baseline) – include applicable meter #, pump # or other identifiers

Enter current system description.

- 1.) Pump #23: 10 hp turbine pump @ meter# XYZ
- 2.) Pump #12: 10hp centrifugal pump with VFD @ meter# ABC
- 3.) Open Ditch <West canal> located near Hwy 20; XX of miles
- 4) Replace (2) thermostats in building A and (1) Building B. HVAC systems = electric forced air

## Proposed System (post installation) – include model numbers (if known)

Enter proposed system description.

- 1.) Pump #23: 10hp. model# ABC-01
- 2.) Pump #12: 10hp pump model# ABC-01; VFD model# RD-003
- 3.) Install XX miles of Concrete lining
- 4.) Install (3) smart thermostats

- Keep descriptions simple
- Identify all measures/ components of the project
- Seek technical assistance for measure identification

# Tips: (C) Project Savings

## When calculating energy savings.....

- Request technical assistance from the Program as needed
- Complete *Required Support Documents* to the best of your ability or seek technical assistance
  - (2) New Pump Project Information Forms
  - (1) Variable Frequency Drive (Existing Pump) Calculator
- Identify measures with water savings and utilize independent studies for water savings
  - Canal Lining

# D. Project Financials (Part 1)

	Column A	Column B	Column C	Column D	Column E	Column F	Column G
Measure #	Measure Category	Resource Opportunity Type	Energy Savings (kWh/yr)	Incentive Rate (\$)	Incentive Rate Unit	Quantity	Estimated Incentive (\$)
#1	New Efficient Pump	Retrofit	4,000	\$ 50	per hp	20	\$ \$1,000
#2	VFD Centrifugal Pump	Retrofit	2,500	\$ 50	per hp	10	\$ 500
#3	Canal Lining	Retrofit	128,500	\$ 0.45	per kWh	1	\$ 57,825
#4	Connected Smart Thermostat	Retrofit	2925	\$ 150	per unit	3	\$ 450
#5	Select Measure	Choose Resource Type		\$	Choose unit		\$
Total			137,925				\$ 59,775

**Columns A, D, & E:** Align with the naming conventions found in the Incentive Rate Reference Tables and Measure Reference Guide.

**Column C:** Section C of application (Project Savings) shows the math. Technical assistance may be requested to complete this portion of application.

**Column G:**

- **Prescriptive Approach** (see #1, 2 & 4)  
(*Column D multiplied by Column F*)
- **Custom Approach** (see #3)  
(*Column C multiplied by Column D*)

Incentive Calculation Table may be completed manually

# D. Project Financials (Part 2)

	Column G	Column H	Column I	Column J	Column K
Measure #	Estimated Incentive (\$)	Estimated Measure Cost (\$)	Additional Funds	Adjusted Measure Cost (\$)	Total Estimated Incentive (\$)
#1	\$ 1,000	\$ 15,000	\$ 0	\$ 15,000	\$ 1,000
#2	\$ 500	\$ 8,000	\$ 0	\$ \$8,000	\$ \$500
#3	\$ 57,825	\$ 250,000	\$ 200,000	\$ 50,000	\$ 50,000
#4	\$ 450	\$ 400	\$ 0	\$ 400	\$ 450
#5	\$ 59,775	\$	\$	\$	\$
TOTAL	\$ 59,550	\$ 273,400	\$ 200,000	\$ 73,400	\$ 51,950

- TOTAL Estimated Incentive cannot exceed \$500,000 project cap
- Sum of Total Estimated Incentive (Column K) cannot exceed the Sum of Adjusted Measure Cost (Column J)

**For example....**

**Measures 1 & 2:** no adjustments;  
Column K = Column G

**Measure 3:** adjusted measure cost due to grant award;  
Column K = Column J

**Measure 4:** no adjustments;  
policy applies to the entire project and is not applied at the measure level

# E: MEASUREMENT & VERIFICATION

- Define technical requirements of proposed equipment and establish baseline and savings calculation procedures for custom projects
- An example M&V plan is available online in the BPA M&V Protocol Selection Guide
- Independent third-party technical studies for savings calculations and follow up metering
- Technical assistance from program staff is available
  - Complete this portion of application
  - Identify energy savings multipliers for prescriptive measures



## STEP 2: REVIEW AND AWARD



2

**BPA Announces  
Awards**

Participant Accepts  
or Declines Incentive  
Offer

- Program will evaluate, rank and select applications that maximize the energy savings potential within the budget.
- Each application will be reviewed for completeness and the program may request additional information to determine accuracy of estimated incentives and/or savings.
- An awardee letter will be issued for selected projects.
- Applications that are not selected will be notified by letter and added to a waitlist, if funding levels change.

# STEP 3: AGREEMENTS EXECUTED

3

## Agreements Executed

Agreements must be reviewed and signed within 45 days of receipt

- The Agreement is project-specific and outlines the following:
  - Terms and conditions (T&Cs)
  - Maximum allowable incentive amount for project
  - M&V Plan for each measure
- ***An incentive offer is not guaranteed until the Incentive Agreement is signed by the participant and BPA.***

# NEW INCENTIVE RATES

*BPA is increasing  
incentive rates for  
FY26/27/28 funding  
cycles*

## **Who benefits?**

- All participants especially irrigation districts

## **Which measures?**

- Water delivery and management
- VFDs for pumps and high efficient pumps
- Other measures

**How much?** Incentive rates increased by 25% to 40%

**Timing of incentive increases?** Effective October 1, 2025

# MEASURE REFERENCES

For new incentive rates, check out the updated program incentive rate reference table.

Use the measure reference guide to determine additional requirements or considerations.

## ESRP PROGRAM MEASURE REFERENCE GUIDE

<b>Typical Measure Life</b>	The Typical Measure Life is the estimated life of product calculated in years for energy efficiency savings calculations. The actual life of a product may vary. Measure Life is not a performance guarantee.
<b>Retrofits versus New Construction and Major Remodels</b>	Retrofits are depicted as replacing a product with an energy efficient model; where as a new construction or major remodel represents equipment that services a new load or process. The baseline for a retrofit is typically the performance of the existing equipment using a deemed or calculated approach, whereas, the baseline for a new construction or major remodel takes into consideration code requirements and/or performance testing.
<b>Incentive Rates</b>	Incentive rates captured in the Incentive Rate Reference Table are captured in dollars per kWh saved; unless otherwise stated. Incentive rates are renewed annually prior to Open Enrollment and Open Season windows. Promotional incentive rates may be offered for a limited duration and may supersede standard incentive rates.

### WATER DELIVERY SYSTEM IMPROVEMENTS

CATEGORY	MEASURES	DESCRIPTION	SPECIAL CONSIDERATIONS
Motors/Drives	New premium efficiency motors	Small incentives are available for new premium motors. The premium efficiency motor standards applies to: <ul style="list-style-type: none"> <li>NEMA Design A, a three-phase, low voltage induction motor rated between 1 and 500 horsepower (hp), and</li> <li>NEMA Design B, a medium-voltage 250 to 500 hp motor designed for service at 5,000 volts or less.</li> </ul>	The baseline for this measure is the efficiency rating of a new standard efficiency motor. The standard efficiency motor efficiency is compared to the efficiency of a premium efficiency motor. The difference between the efficiencies is used to calculate the energy savings. The incentive is based on the energy savings from the increased efficiency, and the incremental cost of the premium efficiency motor.  NEMA Design A/B does not have specifications for motors larger than 500 hp. Incentives for motors over 500 hp will be considered through a custom approach.
	Variable Frequency Drives (VFD)	BPA recommends that all new VFD installations meet the IEEE 519 harmonics standard. This measure provides an annual energy savings of 10% to 30% of the calculated annual energy usage of the application. This measure applies to pumping operations that deliver, distribute, or transport irrigation water with qualifying	The incremental cost of a variable frequency drive is considered to be the entire cost of the drive, including installation costs, in new construction and retrofit applications.  The Ag VFD calculator, located in Resources & Tools Section (Required Support Documents) of the ESRP website, must be completed and attached to the ESRP Application. If the scope of

ESRP Program Incentive Rate Reference Table EFFECTIVE October 1, 2025				
Energy Efficiency Measures		Measure Life (Years)	Retrofit Incentive Rate (\$ per kWh or unit saved)	New Con/Major Remodel Incentive Rate (\$ per kWh or unit saved)
Project Development				
Technical Analysis Study	Technical Analysis Study identifying/analyzing energy efficiency measure opportunities	N/A	Up to \$0.25 per estimated kWh energy savings capped at 100% of cost	N/A
WATER DELIVERY SYSTEM IMPROVEMENTS				
VFD's for Pumps	Variable Frequency Drives (Turbine Pump)	10	\$135 per hp	\$135 per hp
	Variable Frequency Drives (Centrifugal Pump)	10	\$95 per hp	\$95 per hp
Pumping Improvements	New pump	10	\$95 per hp	\$95 per hp
	Pump Rebuilds	10	\$0.25	NA
	Reduce pumping plant friction loss	30	\$0.40	\$0.40
Sprinkler system improvements on pressurized systems		5	\$0.25	\$0.27
System Lift Reduction		30	\$0.45	\$0.45
Water Delivery	Existing Pipe Lining (CML)	30	\$0.50	\$0.50
	Canal lining	20+	\$0.45	\$0.45
	Canal and Lateral piping (plastic & fiberglass)	30+	\$0.50	\$0.50
Water Management	Advanced On-farm water management	1	\$0.05	\$0.05
	System Upgrades	2-3	\$0.05	\$0.05
	Automated Gates (real-time flow and controls)	4+	\$0.30	\$0.35
OTHER IMPROVEMENTS				
Air Compressor System Improvements		10	\$0.30	\$0.35
Building Shell	Residential Insulation	20	up to \$2.35 per sqft	up to \$2.35 per sqft
	Non-residential Insulation	20	up to \$2.00 per sqft	up to \$2.00 per sqft
	Residential Windows	30	up to \$20.00 per sqft	up to \$16.00 per sqft
	Non-residential Windows	30	up to \$18.00 per sqft	up to \$18.00 per sqft
Custom Projects		1	\$0.03	\$0.03
		2-3	\$0.05	\$0.05
		4-19	\$0.25	\$0.27
		20+	\$0.35	\$0.35
Distribution Efficiency Improvements (Distribution Transformers)		4-19	\$0.30	\$0.30
		20+	\$0.35	\$0.35
Engine Block Heaters		10	\$400 per unit <3kW \$2,000 per unit 3kW+	\$200 per unit <3kW \$1000 per unit 3kW+
HVAC	Building Automation	18	\$0.25	\$0.27
	Efficient HVAC Equipment	10	\$0.25	\$0.27
	Connected/Smart Thermostats/Advanced RTU controls	5	\$250 per unit	\$100 per unit
	Variable Frequency Drives	10	up to \$500 per hp (VAV)	up to \$500 per hp (VAV)
LED Lighting & Controls		10	\$0.30	\$0.35
Heat Pump Hot Water Heater		15	up to \$2,200	1,000 per unit

The ESRP Program Incentive Rate Reference Table is a condensed list of eligible energy efficiency measures that are commonly implemented in the Energy Smart Reserved Power Program. If you are pursuing a project that is not listed in the table above, please contact [esrp@bpa.gov](mailto:esrp@bpa.gov) for further assistance. The ESRP Measure Reference Guide is supplemental to this table and provides a description of the

# NEW MEASURES

## Technical Analysis Study (TAS)

- Performed by a licensed/certified engineer or similar
- Holistically identifies and analyzes energy and water efficiency measures at your sites
  - Meets “ASHRAE Level 2 Energy Audit” standard
  - Provides comprehensive report including a business case for implementing the improvements
  - Water, energy and O&M savings; Return on investment/simple payback
- Up to \$0.25 per initial gross estimate kWh savings capped at 50% of savings and 100% of participant’s costs
- Effective October 1, 2025
- TAS Proposal would initiate an incentive contract followed by a contract modification which would include the projects to be implemented

***Contact the program if you would like to pursue this measure***

# 2026/27/28 Solicitation Milestones

FY26 Program Budget: \$ 2,000,000

Milestone	Funding Cycle			Milestone Description
	FY26	FY27	FY28	
Open enrollment window for reserved power applicants	May 21, 2025 to July 31, 2025			First-priority funding requests
Open season for ALL applicants	August 1, 2025 to March 31, 2028			Open season closes once the particular FY budget is fully committed contractually
Award letters/email issued	September 01, 2025 - April 15, 2028			Applicants notified of award status
Incentive agreements executed	October 31, 2025	October 31, 2026	October 31, 2027	Funds are committed for your project upon execution of the incentive agreement
Project completion deadline	September 30, 2026	September 30, 2027	September 30, 2028	The agreement expires upon project completion date. Incentive payment process commences after the final report is submitted and reviewed.

# PROGRAM WEBSITE RESOURCES

1

## How does the program work?

- |                                       |   |
|---------------------------------------|---|
| Step 1: Submit an Application Package | + |
| Step 2: BPA Announces Awards          | + |
| Step 3: Agreements Executed           | + |
| Step 4: Project Implementation        | + |
| Step 5: Project Completion            | + |

2

## ESRP Program Funding Cycle

- |   |
|---|
| 2023 Funding Cycle (Oct. 1, 2022 to Sept. 30, 2023) |
| 2024 Funding Cycle (Oct. 1, 2023 to Sept. 30, 2024) |
| 2025 Funding Cycle (Oct. 1, 2024 to Sept. 30, 2025) |

3

## Resources and Tools

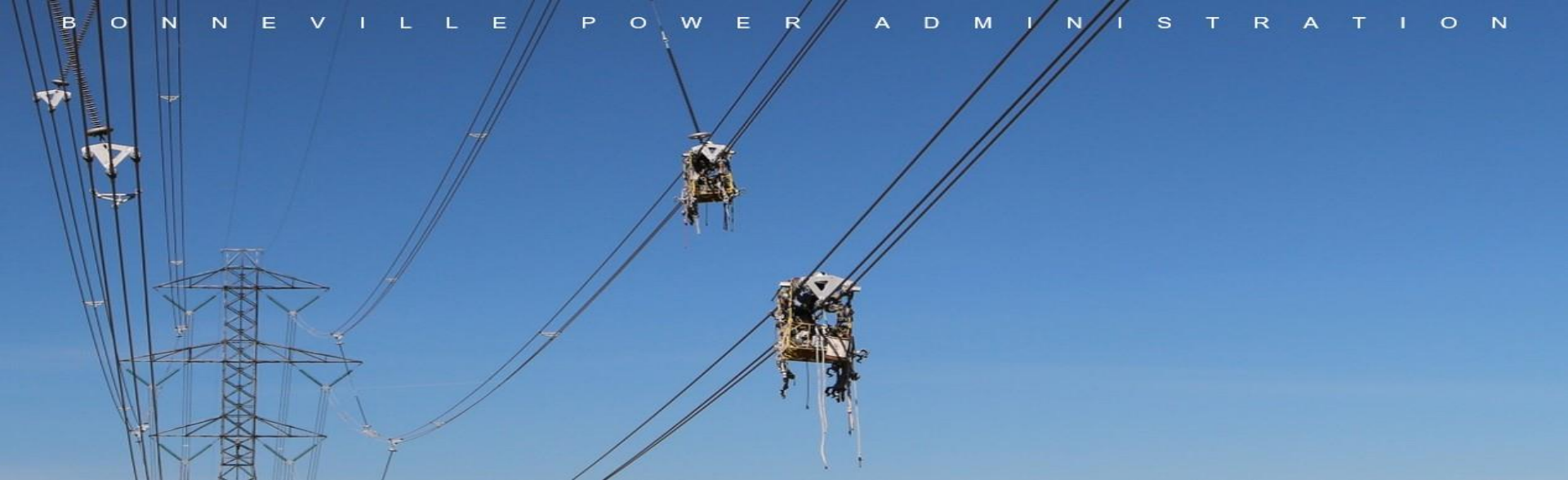
- |                            |   |
|----------------------------|---|
| Getting Started            | + |
| Required Support Documents | + |
| Other Materials            | + |
| Related Links              | + |

4

## Frequently Asked Questions

- |                           |
|---------------------------|
| Program Updates           |
| General Questions         |
| Application Process       |
| Award to Project Closeout |





# Questions?



# Key Takeaways

- Enrollment is now open for Reserved Power applicants
- FY26 program budget is \$ 2,000,000
- Incentives have increased effective Oct 1, 2025
  - Ensure you use the new incentive rate reference table
- The new incentive application and rate reference table will be emailed to you soon.
  - Updated program website resources will be available by June 9<sup>th</sup>
- Program/technical support is available to assist you in the application process
- Submit your FY25 completion report by August 15, 2025
- *Energy efficiency incentives may be available for your facilities not covered by this program and for your residence through your local electric utility*



# THANK YOU!

David J. Lee, CEM | Federal and Agricultural Sector Lead

[djlee@bpa.gov](mailto:djlee@bpa.gov) OR [ESRP Program](#)