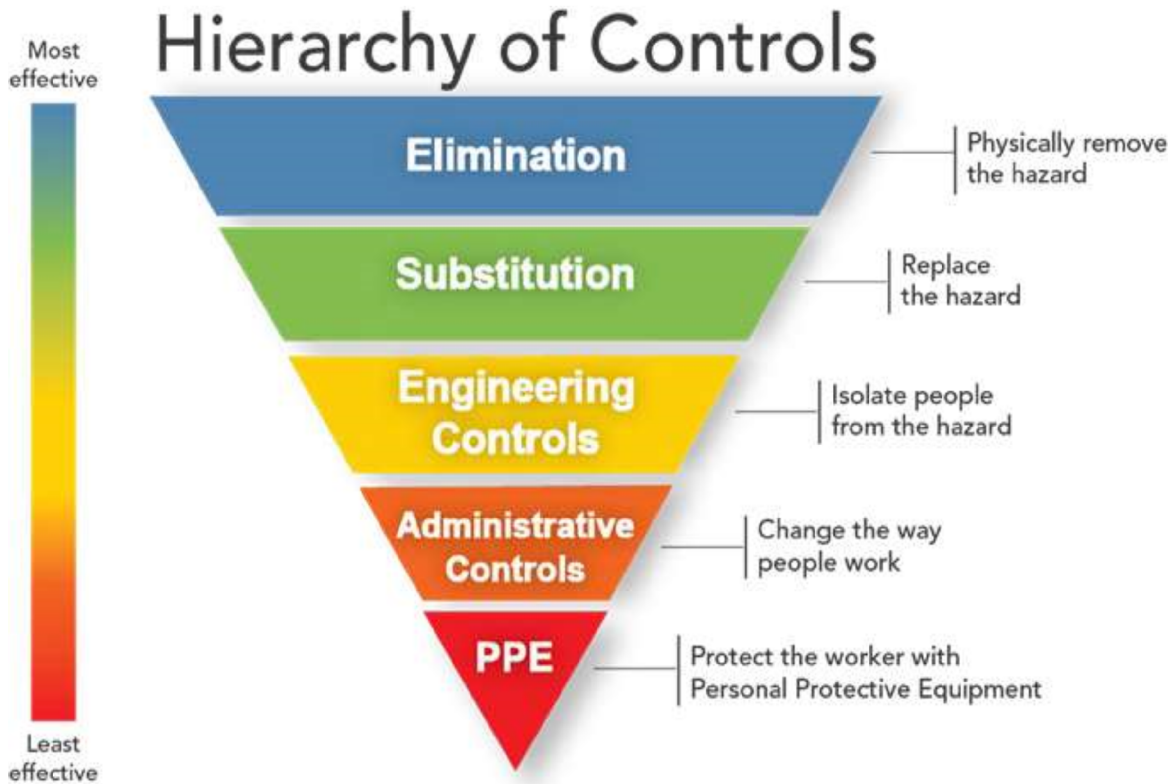


B. Hierarchy of Controls:

The Hierarchy of Controls guides the user through preventative and protective risk control methods that are used independently or in a combination and implemented in the following hierarchy (from most effective to least effective):

- e. **Elimination:** The most effective of the control strategies; eliminates the hazard.
Example: Stop, cancel or postpone work.
- f. **Substitution:** If elimination is not possible, substitute with work less hazardous.
Example: Schedule work in an area with an acceptable AQI and/or schedule indoor work.
- g. **Engineering:** The next most effective is isolating employees from the hazard. Example: Recirculate indoor air instead of circulating outdoor air.
- h. **Administrative:** Less effective controls but may still be used in a combination. Example: Reducing outdoor/indoor activity or work rotation, limiting time exposed to the hazard.
- i. **PPE:** The least effective of the controls and often requires training, testing and evaluation for employees in the respiratory protection program. Those not already in the program may use respiratory protection on a voluntary basis when certain conditions are met. See Respiratory Protection section below.



Organization NF		Title/Subject Wildfire Smoke Exposure Program	Unique ID 420-203	
Owner CSO	Approved by Jennifer Rehbein	Date 10/01/19	Version V1	Page 6

C. Stop Work Authority:

Maintaining a diligent, questioning attitude is vital to the safe execution of work. All workers have the responsibility and authority to immediately initiate a temporary stop for a work activity without fear of retaliation or reprisal. This is when the employee believes a situation exists that places them, their coworker(s), contracted personnel, or the public at risk or in imminent danger; could adversely affect the safety operation of, or cause damage to, a BPA facility.

This process will be initiated by immediately informing the workers involved or that could be affected by the perceived hazard(s) and the on-site person in charge of the project or work activity and seek to address the issue. All workers potentially impacted by the perceived hazard are required to immediately stand down and discuss the issue. If ***all*** Workers involved are in agreement that the issue has been resolved, work may resume.

Example: An employee notices an employee improperly standing on a chair to reach an object. Another employee observes and points out the hazard. Both agree that it wasn't a good idea and stop the work and correct the practice on the spot, there is no need for the formal resolution process.

D. Respiratory Protection:

The use of respiratory protection for employees not already part of the Respiratory Protection program is permissible only when exposed to wildfire smoke, if they are provided the information in Attachment 1 and they obtain the approved filtering face masks (dust masks) that meets the National Institute of Safety and Health (NIOSH) ratings (N95, P95 and R95). Center for Disease Control (CDC) frequently asked questions on the duration of use for respiratory protection is found in Attachment 2.

2.4 Information Governance

This document is under file code: MN-21

Retention Schedule: N1-305-07-1-5/c

Retain while Active + 7 years, and then dispose.

3. References

3.1 Standards

29 CFR 1910.134 – Appendix D – (Mandatory) information for Employees Using Respirators When Not Required under the Standard

3.2 Guidelines

CDC frequently asked questions (FAQ) Respiratory Protection – Respirator Reuse and Extended Use

Organization NF		Title/Subject Wildfire Smoke Exposure Program		Unique ID 420-203	
Owner CSO	Approved by Jennifer Rehbein	Date 10/01/19	Version V1	Page 7	

4. Review

4.1 Review Timeline

This program document will be reviewed and revised in accordance with the SMS.

5. Document Change Control

This chart contains a history of the revisions and reviews made to this document.

Version Number	Date of Issue	Author/Reviewer	Brief Description of Change/Review

Organization NF		Title/Subject Wildfire Smoke Exposure Program		Unique ID 420-203	
Owner CSO	Approved by Jennifer Rehbein	Date 10/01/19	Version V1	Page 8	

6. Appendix B: Safety Program Internal Audit Checklist

Standard:	Requirements	Standard Being Met By:	Complies? (Y/N) If No, explain.

Organization NF	Title/Subject Wildfire Smoke Exposure Program	Unique ID 420-203
Owner CSO	Approved by Jennifer Rehbein	Date 10/01/19
		Version V1 Page 9

7. Appendix D to Sec. 1910.134 (Mandatory) Information for Employees under Respirators When Not Required under the Standard

Respirators are an effective method of protection against designated hazards when properly selected and worn. Respirator use is encouraged, even when exposures are below the exposure limit, to provide an additional level of comfort and protection for workers. However, if a respirator is used improperly or not kept clean, the respirator itself can become a hazard to the worker. Sometimes, workers may wear respirators to avoid exposures to hazards, even if the amount of hazardous substance does not exceed the limits set by OSHA standards. If your employer provides respirators for your voluntary use, or if you provide your own respirator, you need to take certain precautions to be sure that the respirator itself does not present a hazard.

You should do the following:

1. Read and heed all instructions provided by the manufacturer on use, maintenance, cleaning and care, and warnings regarding the respirators limitations.

2. Choose respirators certified for use to protect against the contaminant of concern. NIOSH, the National Institute for Occupational Safety and Health of the U.S. Department of Health and Human Services, certifies respirators. A label or statement of certification should appear on the respirator or respirator packaging. It will tell you what the respirator is designed for and how much it will protect you.

3. Do not wear your respirator into atmospheres containing contaminants for which your respirator is not designed to protect against. For example, a respirator designed to filter dust particles will not protect you against gases, vapors, or very small solid particles of fumes or smoke.

4. Keep track of your respirator so that you do not mistakenly use someone else's respirator.

Organization NF		Title/Subject Wildfire Smoke Exposure Program	Unique ID 420-203	
Owner CSO	Approved by Jennifer Rehbein	Date 10/01/19	Version V1	Page 10

8. Center for Disease Control (CDC) Frequently Asked Questions

Filtering out Confusion: Frequently Asked Questions about Respiratory Protection

Respirator Reuse and Extended Use

Nationwide, approximately 1.3 million workplaces provide at least a portion of their employees with respiratory protection. One of the most common types of respiratory protection is the filtering facepiece respirator (FFR), which is designed to be discarded when it becomes unsuitable for further use due to considerations of hygiene, excessive resistance, or physical damage. However, due to the considerations of cost, convenience, and supply, respiratory protection program managers have great interest in the practices of reuse and extended use of National Institute for Occupational Safety and Health (NIOSH)-approved FFRs that are not damaged or soiled. The following are a few of the most frequently asked questions about respirator reuse.



Can Filtering Facepiece Respirators Safely be Reused?

Yes, in certain situations. *Reuse* refers to the practice of using the same respirator multiple times during a work shift. The respirator is stored between uses and put on (donned) again prior to the next potential exposure.

In most workplace situations, an FFR can be reused as part of an employer's respiratory protection program. Safe FFR reuse is affected by a number of variables that impact respirator function and contamination over time.^{1, 2} Unless the respirator manufacturer identifies a specified duration of use, for example "single use only", or the employer's respiratory protection program excludes reuse, users can wear an FFR until it is damaged, soiled, or causing noticeably increased breathing resistance.

FFRs should only be reused by the same wearer and should be stored in the following ways:

- According to manufacturer's recommendations;
- In a way that protects them from damage, dust, contamination, sunlight, extreme temperatures, excessive moisture, damaging chemicals, and;
- In a way that prevents deformation of the facepiece, straps, and exhalation valve, if present.

Regardless of the setting, the number of times an FFR is reused should be limited. There is no way of determining the maximum possible number of safe respirator reuses as a generic number to be applied in all cases.



When Should Employees not Reuse their Filtering Facepiece Respirators?

While limited FFR reuse is practiced safely in many workplaces, extra caution should be taken in workplaces where there are additional risks posed by handling a potentially contaminated respirator.



Organization NF		Title/Subject Wildfire Smoke Exposure Program		Unique ID 420-203	
Owner CSO	Approved by Jennifer Rehbein	Date 10/01/19	Version V1	Page 11	

For example, FFRs **should not** be reused in biosafety and animal biosafety levels 2 and 3 laboratories.³ Pathogens can remain on the respirator surface for extended periods of time and can potentially be transferred by touch to the wearer’s hands and thus risk causing infection through subsequent touching of the mucous membranes of the face (i.e., self-inoculation). Similar to other personal protective equipment (PPE) used in these environments, such as gloves, FFRs should be discarded after each use and disposed of with other contaminated laboratory waste. There are also additional considerations when implementing FFR reuse in a healthcare setting. To learn more, see the [Recommended Guidance for Extended Use and Limited Reuse of N95 Filtering Facepiece Respirators in Healthcare Settings](#) as well as the [Hospital Respiratory Protection Program Toolkit](#).

How Long can Employees Wear the Same Filtering Facepiece Respirator?

Extended use refers to the practice of wearing the same respirator for repeated exposures, without removing (doffing) the respirator. Continuous or extended FFR use of several hours or more is common in many industries. In general, an employee can safely wear the same FFR until it is damaged, soiled, or causing noticeably increased breathing resistance.

The maximum length of continuous use in non-dusty workplaces is typically dictated by hygienic concerns (e.g., the respirator was discarded because it became contaminated), or practical considerations that call for automatic removal and break in wearing the respirator (e.g., need to use the restroom, meal breaks, etc.), rather than a pre-determined number of hours.



However, for dusty workplaces that could result in high filter loading (e.g., 200 mg of material captured by the filter), service time for N-series filters (such as the commonly-used N95) should be limited to 8 hours of use (continuous or intermittent).⁴ Extensions should only be granted by performing an evaluation in specific workplace settings that: (a) demonstrates extended use will not degrade the filter efficiency below the efficiency level specified in [42 CFR Part 84](#), or (b) demonstrates the total mass loading of the filter(s) is less than 200 mg.

The key consideration for safe extended use is that the respirator **must** maintain its fit and function.

Where can I Find More Information?

This information and more is available on the [NIOSH Respirator Trusted-Source webpage](#).

References

1. Fisher EM, Noti JD, Lindsley WG, Blachere FM, Shaffer RE [2014]. Validation and application of models to predict facemask influenza contamination in healthcare settings. *Risk Anal.* 34(8):1423-1434.
2. Fisher EM, Shaffer RE [2014]. Considerations for recommending extended use and limited reuse of filtering facepiece respirators in healthcare settings. *J Occup Environ Hyg.* 11(8):D115-D128.
3. Brady TM, Struach AL, Almaguer CM, Niezgodka G, Shaffer RE, Yorio PL, Fisher EM, [2017]. Transfer of bacteriophage MS2 and fluorescein from N95 filtering facepiece respirators to hands measuring fomite potential. *J Occup and Environ Hyg.* 14(11):898-906.
4. NIOSH [1996]. Guide to the selection and use of particulate respirators. Cincinnati, OH: U.S. Department of Health and Human Services, Public Health Service, Centers for Disease Control and Prevention, National Institute for Occupational Safety and Health, DHHS (NIOSH) Publication No. 96-101, <https://www.cdc.gov/niosh/docs/96-101/default.html>

Photos courtesy of Shutterstock

This document is in the public domain and may be freely copied or reprinted.
DOI: <https://doi.org/10.26616/NIOSH/PUB2018128>
DHHS (NIOSH) Publication No. 2018-128

To receive NIOSH documents or more information about occupational safety and health topics, please contact NIOSH:
Telephone: 1-800-CDC-INFO (1-800-232-4636) TTY: 1-888-232-6348 CDC INFO: www.cdc.gov/info or visit the NIOSH Web site at www.cdc.gov/NIOSH.
For a monthly update on news at NIOSH, subscribe to NIOSH eNews by visiting www.cdc.gov/niosh/eNews.

Organization NF		Title/Subject Wildfire Smoke Exposure Program		Unique ID 420-203	
Owner CSO	Approved by Jennifer Rehbein	Date 10/01/19	Version V1	Page 12	

From: Operations Support - TOO

Sent: Fri Sep 11 17:45:42 2020

To: cewilliams@bpa.gov

Subject: Update Bulletin Board - N/A

Importance: Normal

[Operations Support - TOO](#)

N/A has been added

[Modify my alert settings](#)

| [View N/A](#)

| [View Update Bulletin Board](#)

| [Mobile View](#)

TOO Sub-Team: Operations Planning

Week Of: 9/14/2020

Update:

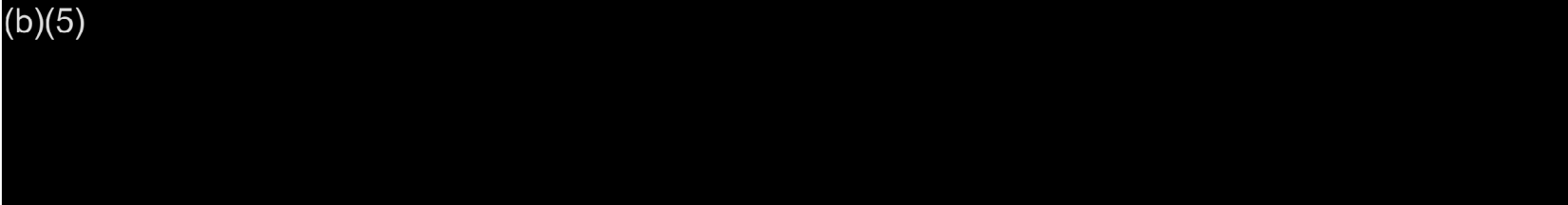
· The major focus for this week was the fires. I provided responses to questions and technical support as needed. An item that I paid particular attention to was the fiber break situation on the Chief Joe – Grand Coulee 230kV line which impacted the #DC fiber ring. A second break or electronic equipment failure on another portion of this ring would have resulted in significant reliability impacts, including:

- o The loss of gen drop at Coulee, Chief Joe, and Wells which, in turn, would have reduce NWACI and PDCI TTCs.
- o Loss of high-speed fault clearing on several major lines.
- o Loss of SCADA control to a number of substation, including Coulee and Chief Joe.
- o Loss of the ability to use Coulee and Chief Joe for AGC response.
- o Loss of telephone and voice communications in the area.

Another area of concern is the Santiam Fire which has the potential to knock out a number of the lines tied to Marion Sub. BPA and the other utilities in the Willamette Valley are putting into place a load shed procedure in the event Marion

Substation is lost. We continue to monitor all the various situations across the system.

(b)(5)



Title: N/A

Last Modified 9/11/2020 5:42 PM by Anasis,John G (TFE)(BPA) - TOOP-DITT-2

BPA Situation Report

Operations Section Chief Report

- Active fires still burning in the area
- 4 BPA lines or line sections currently OOS that we are responsible to restore.
- 2 BPA line out for proximity work for fire damage restoration
- Access issues keeping crews from completing assessments or repairs:
 - A Section of Jones Canyon - Santiam 230kv
- Electrical customers still impacted by BPA restoration:
 - EWEB – ETR TBD – EWEB is not ready to provide generation
 - Lane Electric – ETR 9-17-20
- Fiber customers still affected by BPA restoration:
 - Noanet – partially restored – full restoration of customer 9-18-20
- Mutual Assistance
 - Continue to asses damage to BPA system to determine the need for or to provide mutual assistance
- Working with Operations and Planning to determine long range strategy

This document may contain SOC-Restricted Information. Under FERC Standards of Conduct, SOC-Restricted Information may not be shared with Marketing Function Employees (MFEs) unless certain criteria have been met (e.g., voluntary consent by the customer, a public OASIS posting, system emergencies, or other exceptions). Please take care to remove or otherwise redact the SOC-Restricted Information before forwarding or otherwise sharing with Marketing Function Employees.

BPA Situation Report

Dispatch Priorities

Salem/Alvey

1. Jones Canyon-Tumble Creek section of Jones Canyon-Santiam #1 230kv line, (not be able to access for patrols due to active fire)
2. Cougar-Holden Creek #1 115 line.

** The fire threatening Marion substation remains the biggest concern**

Grand Coulee

1. Grand Coulee-Foster Creek #1 115kv line, (restore normal source to CHJ 500kv SS and investigate CHJ SS issues and Nespelem COOP normal source)
2. Grand Coulee-Chief Joseph #1 and #2 230kv lines
3. Goose Lake-Okanogan section of Grand Coulee-Okanogan #2 115kv line

Buckley remains on engine generators for Station Service power (SS is fed from Jones Canyon-Santiam #1 230kv line) . Fuel needs have been addressed

BPA Situation Report

POD Outages as of 08:00

- Cougar – Holden Creek (some TOP, some ours)
 - Forces out Cougar PH and **Carmen Smith generation (EWEB)**.
 - Blue River POD for **Lane Electric** is OOS on this line
- Nilles Corner- Chicken Creek Section Grand Coulee – Foster Creek No 1 115 kV line
 - Normal source to POD still out.
 - Nespelem POD Restored from Douglas. Customer restored.
 - Chief Joe SS other trouble.
- Jones Canyon – Santiam #1 230 KV line
 - Tumble Creek-Santiam section restored
 - Forces out Buckley Station Service
 - Wind Generation restricted to 50% name plate.
- Brewster – Foster Creek (TOP line for Okanogan, not a BPA line)
 - North Bar POD (Douglas Co.) OOS 0345 9/8 (not a BPA Customer)
 - Just listed here as they loop through our system
 - Still out. Eta unknown. 9/11 @ 1115 restored up to Foster Creek.

BPA Situation Report

South Region Activities

- **Salem: *Santiam Fire***
 - **Jones Canyon-Tumble Creek section of Jones Canyon-Santiam#1 230kV:**
 - Active fires impeding patrol, reevaluating daily
 - **Marion Sub:**
 - Normal operations
 - Preventive fire watch on site
 - Daily evaluation with Santiam fire IMT on risk to Marion Sub
- **Eugene: *Holiday Farm Fire***
 - **Cougar-Holden Creek #1 115kV:**
 - Cougar - Blue River Tap (6 miles)
 - TLM crews working with tree cutting crews to restore Cougar-Blue River Tap
 - Working with stakeholders to restore POD at Blue River Tap for Lane Electric on 9-17-20
 - Blue River Tap – Holden Creek (21 miles)
 - Assessment has begun to determine extent of damage
 - » ETR of assessment – 9-18-20

BPA Situation Report

North Region Activities

- **Grand Coulee**

- Making progress on the restoration activities on GCOU – CHJO #1 230kv
 - ETR – 9-17-20
- Completed restoration on the GCOU – FOST #1 115kv
 - Leaving OOS for proximity work
- Completed restoration on the GCOU – CHJO #2 230kv
 - Leaving OOS for proximity work
- Continue restoration on GCOU – OKAN #2 115kv
 - ETR – TBD
- Working with the customer on the final fiber break on the CHJO – SCLR
 - Customer fiber only - NOANET
 - ETR – 9-18-20

BPA Situation Report

Logistics & Planning

- **Logistics**

- AMS continues to standby at Columbia and Midway sub pending final restoration of the fiber. ETR – 9-18-20
- Cell Boosters approved and purchased
- Material and equipment needs being met
- Communication issues being mitigated

- **Planning**

- Assessment of work priorities based on TOT load studies
- Sequencing of crew days off to maintain rest day for all workers not to exceed 14 days
- IMT hours tracking
- Contingency plans for resources

From: Witbrodt,Alexandra L (CONTR) - TPCC-TPP-4

Sent: Thu Sep 17 10:20:22 2020

To: mwithbrodt@outlook.com

Subject: FW: Fire IMT Situation Brief 9-16-20

Importance: Normal

Attachments: image001.png; Fire IMT Executive Brief 9-16-20 PM.pdf

Alexandra (Murphy) Witbrodt
(ContR) cid:image001.png@01D5B0CC.26459910

Program Support Specialist

Customer Service Engineering, Contract Administration

Bonneville Power Administration
bpa.gov | P 360-418-2551

From: Johnson,Kelly G (BPA) - TPC-TPP-4 <kgjohnson@bpa.gov>

Sent: Thursday, September 17, 2020 08:32

To: ADL_TPC_ALL <ADL_TPC_ALL@BPASite1.bpa.gov>
Subject: FW: Fire IMT Situation Brief 9-16-20

FYI

From: Cantwell, Janean C (BPA) - NNC-1 <jccantwell@bpa.gov>
Sent: Wednesday, September 16, 2020 2:30 PM
To: Hairston, John L (BPA) - K-7 <jlhairston@bpa.gov>; Furrer, Robin R (BPA) - N-7 <rrfurrer@bpa.gov>; James, Daniel M (BPA) - D-7 <dmjames@bpa.gov>; McDonald, Thomas A (BPA) - C-7 <tamcdonald@bpa.gov>; Lahti, John A (BPA) - TFH-CSB-1W <jalahti@bpa.gov>; Shaheen, Richard L (BPA) - T-DITT-2 <rlshaheen@bpa.gov>; Cathcart, Michelle M (BPA) - TO-DITT-2 <mmcathcart@bpa.gov>; Miller, Mike P (BPA) - TF-DITT-2 <mpmiller@bpa.gov>; Cook, Joel D (BPA) - P-6 <jdcook@bpa.gov>; Laylo, Sarah M (BPA) - NN-1 <smlaylo@bpa.gov>; DiGenova, Jeffrey A (BPA) - TT-DITT-2 <jadigenova@bpa.gov>; Nguyen, John G (BPA) - NNC-1 <jnguyen@bpa.gov>; Johnson, G Douglas (BPA) - DK-7 <gdjohnson@bpa.gov>; Cook, Jeffrey W (BPA) - TP-DITT-2 <jwcook@bpa.gov>; Bea, Brad A (BPA) - NF-MODW <babea@bpa.gov>; ADL_TSE_ONLY <adtseonly@bpa.gov>; Klumpp, Elizabeth C (BPA) - DIR-WSGL <ecklumpp@bpa.gov>; Peacock Williamson, Julie (BPA) - DIR-7 <jxpeacockwilliamson@bpa.gov>; Baskerville, Sonya L (BPA) - DIN-WASH <slbaskerville@bpa.gov>; Ko, Tina G (BPA) - TS-DITT-2 <tgko@bpa.gov>; Scruggs, Joel L (BPA) - DK-7 <jlscruggs@bpa.gov>; Cogswell, Peter (BPA) - DI-7 <ptcogswell@bpa.gov>; PIO <pio@bpa.gov>
Cc: Shoemaker, Brandee R (BPA) - TFA-DOB-1 <brshoemaker@bpa.gov>; Hull, Michael J (BPA) - TE-DITT-2 <mjhull@bpa.gov>; Olesen, Greg L (BPA) - TF-TRI CITIES RMHQ <glolesen@bpa.gov>; McCracken, Michael A (BPA) - TFK-KALISPELL <mamccracken@bpa.gov>; Schildt, Stefan J (BPA) - TFC-COVINGTON <sjschildt@bpa.gov>; Robertsen, Robert K (BPA) - TFV-ROSS MHQA <rkrobertsen@bpa.gov>; Schoenberg, Rob D (TFE)(BPA) - TORD-DITT-1 <rdschoenberg@bpa.gov>; Felker, Steven D (TFE)(BPA) - TORM-MEAD <sdfelker@bpa.gov>; Kingsford, Brent E (TFE)(BPA) - TORD-DITT-1 <bekingsford@bpa.gov>; O'Leary, Marybeth S (BPA) - NNC-DOB-1 <msoleary@bpa.gov>; Beasley II, James W (BPA) - NFC-MODW <jwbeasley@bpa.gov>; Allen, Neva J (BPA) - TFAW-REDMOND <njallen@bpa.gov>; Kroon, Sharon L (CONTR) - TF-ROSS MHQA

<slkroon@bpa.gov>; DOCL <docl@bpa.gov>

Subject: Fire IMT Situation Brief 9-16-20

Good afternoon,

Please see the attachment for today's Situation Brief.

Respectfully,

Janean Cantwell

Emergency Management Specialist | Continuity of Operations and Emergency Management

Bonneville Power Administration

905 NE 11th Ave.

Portland, OR 97232

jccantwell@bpa.gov | P 503-230-3730 |

BPA Situation Report

South Region Activities

- **Salem: *Santiam Fire***
 - **Jones Canyon-Tumble Creek section of Jones Canyon-Santiam#1 230kV:**
 - Active fires impeding patrol, reevaluating daily
 - **Marion Sub:**
 - Normal operations
 - Preventive fire watch on site
 - Daily evaluation with Santiam fire IMT on risk to Marion Sub
- **Eugene: *Holiday Farm Fire***
 - **Cougar-Holden Creek #1 115kV:**
 - Cougar - Blue River Tap (6 miles)
 - TLM crews working with tree cutting crews to restore Cougar-Blue River Tap
 - Working with stakeholders to restore POD at Blue River Tap for Lane Electric on 9-21-20
 - Blue River Tap – Holden Creek (21 miles)
 - Assessment has begun to determine extent of damage
 - » ETR of assessment – 9-17-20 (seven miles left to patrol)
 - » Verifying availability of materials
 - » Actively increasing additional resources

From: Ko,Tina G (BPA) - TS-DITT-2

Sent: Sat Sep 12 10:29:35 2020

To: Johnson,G Douglas (BPA) - DK-7; Fire Info

Subject: FW: Communications

Importance: Normal

Attachments: image001.jpg; image002.jpg; image003.jpg; image004.jpg; image005.jpg; image006.jpg

Tina G. Ko

Vice President, Transmission Marketing & Sales

Bonneville Power Administration

bpa.gov | P 360.418.2601 | C (b)(6)

Facebook-Icon_31x31_v3Flickr-Icon_31x31Instagram-Icon_31x31LinkedIn-Icon_31x31[Twitter_31x31](#)YouTube_31x31

From: Nguyen,John G (BPA) - NNC-1 <jgnguyen@bpa.gov>

Sent: Friday, September 11, 2020 5:36 PM

To: Ross,Hope E (BPA) - PSE-MEAD-GOB <heross@bpa.gov>; Ko,Tina G (BPA) - TS-DITT-2 <tgko@bpa.gov>

Subject: RE: Communications

Thanks Hope,

I have added Tina and Marybeth to the email string to answer back to Rob and John Anasis.

Very respectfully,

John

John Nguyen, CEM

Manager, Continuity of Operations and Emergency Management (NNC)

BONNEVILLE POWER ADMINISTRATION

P 503-230-5054 | C (b)(6)

BPA Strong! Ready. Reliable. Resilient.

On Sep 11, 2020 16:56, "Ross,Hope E (BPA) - PSE-MEAD-GOB" <heross@bpa.gov> wrote:

John,

I think Tina Ko was added as a LOF for the fire IMT but I don't see her name on the list below. In case it's useful, the power and transmission AEs have been working with our utility customers to develop a list of customers affected by this week's events and I believe that Tina has the summary.

Hope

From: Nguyen,John G (BPA) - NNC-1 <jnguyen@bpa.gov>

Sent: Friday, September 11, 2020 4:14 PM

To: Weber,Tina M (BPA) - PSB-6 <tmweber@bpa.gov>; Hawkins,Robert E (BPA) - PGSP-5 <rehawkins@bpa.gov>; Loescher,Andrew D (BPA) - TAS-TPP-4 <adloescher@bpa.gov>; Ross,Hope E (BPA) - PSE-MEAD-GOB <heross@bpa.gov>; Wilson,Boyd D (BPA) - PEJB-TRI CITIES RMHQ <bwilson@bpa.gov>; O'Leary,Marybeth S (BPA) - NNC-DOB-1 <msoleary@bpa.gov>

Cc: Siewert,Christopher W (BPA) - TORD-DITT-1 <cwsiewert@bpa.gov>; Anasis,John G (TFE)(BPA) - TOOP-DITT-2 <jganasis@bpa.gov>

Subject: Communications

Thanks Rob,

I will defer to the Fire Liaison Officer, Marybeth O'Leary to provide appropriate response and info to our Federal

partners.

Very respectfully,

John

John Nguyen, CEM

Manager, Continuity of Operations and Emergency Management (NNC)

BONNEVILLE POWER ADMINISTRATION

P 503-230-5054 | C (b)(6)

BPA Strong! Ready. Reliable. Resilient.

On Sep 11, 2020 16:10, "Hawkins,Robert E (BPA) - PGSP-5" <rehawkins@bpa.gov> wrote:

Good afternoon,

Below is an email chain between RCC, myself and John filling communication gap existing in the current fire

situation. Is there a way we could have the IMT issue out a briefing to our federal partners so they are kept in the loop on what impacts BPA is having/expecting?

Thanks,

Rob

From: Anasis,John G (TFE)(BPA) - TOOP-DITT-2 <jganasis@bpa.gov>
Sent: Friday, September 11, 2020 10:50 AM
To: Hawkins,Robert E (BPA) - PGSP-5 <rehawkins@bpa.gov>
Subject: RE: Power Grid Questions

Rob,

You are very welcome. I am not sure how BPA is coordinating information with our federal partners during this event which is why limited the amount of detail that I included in my reply. If Julie needs additional information, then I think we may want to start coordinating that through the IMT.

John

From: Hawkins,Robert E (BPA) - PGSP-5 <rehawkins@bpa.gov>
Sent: Friday, September 11, 2020 10:47 AM
To: Anasis,John G (TFE)(BPA) - TOOP-DITT-2 <jganasis@bpa.gov>
Subject: RE: Power Grid Questions

Thank you John!!

From: Anasis,John G (TFE)(BPA) - TOOP-DITT-2 <jganasis@bpa.gov>
Sent: Friday, September 11, 2020 10:44 AM
To: Ammann, Juliet H CIV USARMY CENWD (USA) <Julie.H.Ammann@usace.army.mil>; Hawkins,Robert E (BPA) - PGSP-5 <rehawkins@bpa.gov>
Cc: Koski,Paul T (BPA) - PGSP-5 <ptkoski@bpa.gov>; Jackson II,Jerry L (TFE)(BPA) - TOOP-DITT-2 <jljacksonii@bpa.gov>; Albright,Margaret I (BPA) - TOO-DITT-2 <mialbright@bpa.gov>; Kingsford,Brent E (TFE) (BPA) - TORD-DITT-1 <bekingsford@bpa.gov>; Schoenberg,Rob D (TFE)(BPA) - TORD-DITT-1 <rdschoenberg@bpa.gov>

Subject: RE: Power Grid Questions
Importance: High

Julie and Rob,

Thank you for your notes on this. These fires have caused some situations that are causing complications for BPA on the transmission side of the house. The situation is very fluid. Hence, I will just mention a couple of the more critical items:

· The fire that damaged some of the transmission lines between Grand Coulee and Chief Joseph also damaged a fiber optic cable that is an important part of BPA's telecommunications network. Since we run our fiber system in loops, we are still able to maintain our communications traffic on this cable. However, if this cable experiences another problem (such as the failure of electronic gear at one of the stations along the loop or if the cable suffers a second break due to a fire), then we will have a disruption of communications traffic that will result in a number of impacts, including:

- o Loss of portions of our Remedial Action Schemes (RAS). This will impact our transfer capability to California.
- o Loss of high-speed fault clearing for several major transmission lines.
- o Loss of SCADA control to a number of our substations, including Chief Joe.
- o Potential loss of ability to use Chief Joe and Grand Coulee for AGC.
- o Loss of phone and radio communications ability in that area.

Repair of this fiber is one of the top priorities for BPA's field crews.

- The Santiam Fire east of Salem is close to one of our major 500kV substations. We have already experienced outages of several of the major lines coming into this station, but we have been able to restore them. However, if the fire were to continue to head westward and somehow cause this station to be de-energized, then there would need to be load shedding in western Oregon from Salem south to the California border and out to the coast.

- It is my understanding that the transmission line that provides station service to Chief Joe Dam is still out of service. This is another priority repair item for our crews.

In addition to all of this, there are a number of 115kV lines and points of delivery between BPA and our customers that have been impacted by these fires which have resulted in local load service problems.

Overall, we are managing pretty well, but there are still a number of damaged facilities and on-going risks that we are facing.

I hope that this is of some help. BPA has stood up an Incident Management Team for dealing with this event, so they may need to work through them if more detailed information is required. Also, the information I have included above should still be considered sensitive for right now and should not be sent out publicly without proper review.

Thank you and please stay safe!

John

John Anasis

Bonneville Power Administration

Operations Planning – TOOP-Ditt2

(360) 418-2263

jganasis@bpa.gov

-----Original Message-----

From: Ammann, Juliet H CIV USARMY CENWD (USA) <Julie.H.Ammann@usace.army.mil>

Sent: Friday, September 11, 2020 9:48 AM

To: Hawkins,Robert E (BPA) - PGSP-5 <rehawkins@bpa.gov>

Cc: Anasis,John G (TFE)(BPA) - TOOP-DITT-2 <jganasis@bpa.gov>; Koski,Paul T (BPA) - PGSP-5 <ptkoski@bpa.gov>

Subject: [EXTERNAL] RE: Power Grid Questions

Rob - thanks so much! This is very helpful as I try to pull together some high level summaries for our HQ folks in DC.

Appreciate the help - I'll keep an eye open for any additions from John or Paul...

Julie

Julie H Ammann, PE

Chief, Reservoir Control Center

Northwestern Division

w: 503-808-3945 bb: (b)(6)

julie.h.ammann@usace.army.mil

-----Original Message-----

From: Hawkins,Robert E (BPA) - PGSP-5 [<mailto:rehawkins@bpa.gov>]

Sent: Friday, September 11, 2020 9:42 AM

To: Ammann, Juliet H CIV USARMY CENWD (USA) <Julie.H.Ammann@usace.army.mil>

Cc: Anasis,John G (TFE)(BPA) - TOOP-DITT-2 <jganasis@bpa.gov>; Paul Koski <ptkoski@bpa.gov>

Subject: [Non-DoD Source] RE: Power Grid Questions

Good Morning Julie,

I hope you are doing ok during this completely crazy week. I'm doing alright all things considered. Very excited for the forecasted rain we are expecting Monday evening.

With respect to the larger grid, so far we are not seeing any dramatic impacts on our ability to deliver power to our customer and export outside the region.

We've had enough excess capacity on the Columbia to make up for the loss of the Willamette generation, so that problem is pretty localized.

There was some damage to the lines coming in/out of CHJ but currently that isn't impacting BPA from a power services perspective. I'll add John Anasis to this email in case there is something else to add here.

The biggest risk we see for the coming few days is the risk of losing the ability to communicate with GCL/CHJ due to some lines that have been damaged. Should this happen, the projects would need to be taken off of AGC response. This would require a large increase in AGC control needed from the rest of the system.

John and Paul, please feel free to add/correct anything I have stated if I mischaracterized anything.

Thanks,

Rob

-----Original Message-----

From: Ammann, Juliet H CIV USARMY CENWD (USA) <Julie.H.Ammann@usace.army.mil>

Sent: Friday, September 11, 2020 7:52 AM

To: Hawkins,Robert E (BPA) - PGSP-5 <rehawkins@bpa.gov>

Subject: [EXTERNAL] Power Grid Questions

Rob,

Our Emergency Management folks are getting a lot of questions at HQ about how the fires affecting Corps projects might be impacting the larger power grid.

Can you help me craft a couple high level talking points - maybe by helping me answer the following questions?

How are the downed transmission lines in the Willamette Valley affecting BPA's ability to meet and send power (is a local problem or is it affecting the entire system)? I assumed it was local, but wanted to check.

We've told them the lost power in the Willamette can be made up through generation on the Columbia but is there anything else to add?

Are the fires affecting BPA's ability to send power to Canada or California?

Thanks for any help you can provide on this, Julie

Julie H Ammann, PE

Chief, Reservoir Control Center

Northwestern Division

w: 503-808-3945 bb: (b)(6)

julie.h.ammann@usace.army.mil

From: Cantwell, Janean C (BPA) - NNC-1

Sent: Fri Sep 18 13:56:54 2020

To: Hairston, John L (BPA) - K-7; Furrer, Robin R (BPA) - N-7; James, Daniel M (BPA) - D-7; McDonald, Thomas A (BPA) - C-7; Lahti, John A (BPA) - TFH-CSB-1W; Shaheen, Richard L (BPA) - T-DITT-2; Cathcart, Michelle M (BPA) - TO-DITT-2; Miller, Mike P (BPA) - TF-DITT-2; Cook, Joel D (BPA) - P-6; Laylo, Sarah M (BPA) - NN-1; DiGenova, Jeffrey A (BPA) - TT-DITT-2; Nguyen, John G (BPA) - NNC-1; Johnson, G Douglas (BPA) - DK-7; Cook, Jeffrey W (BPA) - TP-DITT-2; Bea, Brad A (BPA) - NF-MODW; ADL_TSE_ONLY; Klumpp, Elizabeth C (BPA) - DIR-WSGL; Peacock Williamson, Julie (BPA) - DIR-7; Baskerville, Sonya L (BPA) - DIN-WASH; Ko, Tina G (BPA) - TS-DITT-2; Scruggs, Joel L (BPA) - DK-7; Cogswell, Peter (BPA) - DI-7; PIO; Schuch, Richard W (BPA) - NNT-1; Worstell, Kenneth N (BPA) - NNT-MODD; Nemeth, Cecily A (BPA) - NNT-MODD; Ellefson, Brent W (CONTR) - NNT-1; Clarke, Thomas W (BPA) - NNT-1; Rademacher, Craig F (BPA) - NNT-MODD; cahardin@bpa.gov; crsweeney@bpa.gov; kwingert@bpa.gov; enjensen@bpa.gov; ardeclerck@bpa.gov; alharris@bpa.gov; ragillman@bpa.gov; sggoodwin@bpa.gov; tdsimpson@bpa.gov; jrmiller@bpa.gov; ehcarter@bpa.gov; yslinn@bpa.gov; mmjackson@bpa.gov; mrrios@bpa.gov; cclockman@bpa.gov; bdaltman@bpa.gov; legreen@bpa.gov; kdgilliland@bpa.gov; mrhelms@bpa.gov

Cc: Shoemaker, Brandee R (BPA) - TFA-DOB-1; Hull, Michael J (BPA) - TE-DITT-2; Olesen, Greg L (BPA) - TF-TRI CITIES RMHQ; McCracken, Michael A (BPA) - TFK-KALISPELL; Schildt, Stefan J (BPA) - TFC-COVINGTON; Robertsen, Robert K (BPA) - TFV-ROSS MHQA; Schoenberg, Rob D (TFE)(BPA) - TORD-DITT-1; Felker, Steven D (TFE)(BPA) - TORM-MEAD; Kingsford, Brent E (TFE)(BPA) - TORD-DITT-1; O'Leary, Marybeth S (BPA) - NNC-DOB-1; Beasley II, James W (BPA) - NFC-MODW; Allen, Neva J (BPA) - TFAW-REDMOND; Kroon, Sharon L (CONTR) - TF-ROSS MHQA; DOCL; rmboursier@bpa.gov

Subject: Fire IMT Situation Brief 9-18-20

Importance: Normal

Attachments: Fire IMT Executive Brief 9-18-20 AM.pdf

Good afternoon,

Please see the attachment for today's Situation Brief.

Respectfully,

Janean Cantwell

Emergency Management Specialist | Continuity of Operations and Emergency Management

Bonneville Power Administration

905 NE 11th Ave.

Portland, OR 97232

jccantwell@bpa.gov | P 503-230-3730 |

Date	September 09, 2020	Phone Bridge/Call-In #	509-822-4485 Pass code: (b)(6)
Time	6:00pm -7:00pm	Team-meeting SharePoint	
Room	Conference Call	Meeting purpose	IMT 2020 Fire Wind Event
Note taker	Sharon Kroon	Meeting resources	
	IMT Commander- Garrett Rehbein		

Meeting Report-Out Summary

Presenter	Discussion
<i>Garrett Rehbein Safety Moment & 201 Document</i>	<p>Safety Fatigue Watch Hours, heavy smoke COVID. Hydrate and eating small meals throughout the day along with snacks helps keep the body hydrated.</p> <p>Reviewed fire map throughout the states, lot of them are ongoing and some are merging. It is ok to keep family safe first! Focus on Health and Safety Briefings. Timelines remain the same as today with more follow up later this evening. South Fork-Tillamook is fixed. Fire at Marion Sub continues to be a concern. North Bend Crews to return home to work & patrol there.</p> <p>Asked for one developed spreadsheet to include what has been completed & what needs to be done with items needed to complete the work.</p> <p>Thank you for work you all have been doing....current IMT team will transition into a bigger team and will be scaling up. What are the crew locations, poles needed, work needs to be done etc. On prior event tried to handle it ourselves. Will be rotating positions for backup and relief. It will change and will know more in the morning and will be working with the policy group. Remain doing what we are for now. Will meet again at 10:00 AM. Concern is keeping the good stuff already established going forward!</p>
<i>North Operational Section Chief: Stephan Schildt</i>	All poles have been spotted except for Grand Coulee. Station Service should be up and in serve by noon tomorrow. Self-loader on site and crews are knocking it out. Building a spreadsheet with a rough estimate of time needed and will send it out to team.
<i>South Operational Section Chief: Rob Robertsen</i>	South Fork-Tillamook is holding... Releasing crew back to district. The Dalles is patrolling helping Salem and then going back to The Dalles. Chemawa to continue patrol. May need heavy equipment. Found source of mis-information was incorrect Santiam Fire 6 miles north of BPA lines started Aug 6 th . Marion Sub is under fire watch with rotating shifts. Was able to fly Eugene. 0/1 for 14mile, going west was turn back due to smoke & visibility. Alvey Crew on standby with access issues due to fire report. N. Bend crew to return home and go on Bandon-Rouge & Fairview-Rouge patrols. Small fire un Reedsport-Fairview may need inspections.
<i>East Operational Section Chief: Mike McCracken</i>	Items of concern already addressed.
<i>Planning Section Chief: Greg Olesen</i>	Working with Work Planning on needs
<i>Logistics Section Chief: Brandee Shoemaker</i>	<p>Work Order issued for poles going to Ryan and will check with Ryan for any needs.</p> <p>What is the list of heavy equipment needs for the South Region crews?</p>

<i>Public Relations Chief: Mike Hull</i>	Attended the OR Gov office call. One of the concerns is BPA's 500 line. Doug Johnson stated that BPA was accused of causing a small fire but worked to get that info retracted/removed from news reporting agencies records as it was in error. He is also working with other OR news agencies to right the record.
<i>Fiber Restoration/PSC Coordinator: Fred Bryant</i>	Comm. alarms outside of McNary turned out to be nothing. 16 places with damaged fibre & are trying to secure photos. All fibre has been tested and is ready to go.
<i>Dispatch Coordination: Steve Felker or Senior TBD</i>	Priorities remain the same as today as yesterday. Dispatch appreciates the communication when crews move or return home to duty stations.
<i>Safety Coordination-Brad Bea or designee James B.</i>	Info covered in Garrett's opening statement.
<i>WP&E: Neva Allen</i>	Keep her informed on the changes so her info is current. Send a meeting notice to work with Greg to cover at 09/10, 1:00 pm meeting.
<i>Continuity Liaison: MaryBeth O'Leary</i>	
<i>Sharon Kroon</i>	Started a Hot Wash / What would be helpful for future IMT events. Send her items to add.
<i>Jenean Cantwell</i>	She is looking at fires in relation to the BPA lines. May be able to provide a view of how close is close for fire in relationship to structures/lines/corridors. Can measure fire boulder to a certain location?

Next :

Crews to meet with Dispatch for days marching orders	09/11/2020	5:30 AM
Next IMT AM Call	09/11/2020	10:00 AM
Next IMT PM Call	09/11/2020	6:00 PM

BPA Situation Report

Operations Section Chief Report

- 7 Districts have suffered some sort of damage.
- Multiple crews working the restoration.
- 5 BPA lines or line sections currently OOS that we are responsible to restore.
 - 1 BPA line out for proximity work for fire damage restoration
- Active fires still burning keeping crews from completing assessments or repairs:
 - Sections of Cougar – Thurston 115kv
 - Section of Jone Canyon - Santiam 230kv
- Electrical customers still impacted by BPA restoration:
 - EWEB – ETR TBD – EWEB is not ready to take service
 - Lane Electric – ETR 9-17-20
- Fiber customers still affected by BPA restoration:
 - Noanet – partially restored – full restoration TBD

BPA Situation Report

North Region Activities

- Stefan Schildt, North Branch Director
 - Line crews restored the fiber break on SHUL – SCLR
 - Restored ZAYO
 - Restored Pro Watch
 - Made progress on GCOU – CHJO #1 230kv
 - Made progress on GCOU – FOST #1 115kv
 - Currently assessing the final fiber break on the CHJO – SCLR
 - Customer fiber only - NOANET
 - ETR – TBD
 - Continue to work on:
 - GCOU – CHJO #1 230kv
 - » ETR – 9-17-20
 - GCOU – Foster Creek #1 115kv
 - » ETR – 9-17-20
 - GCOU – OKAN #2 115kv
 - » ETR - TBD

BPA Situation Report

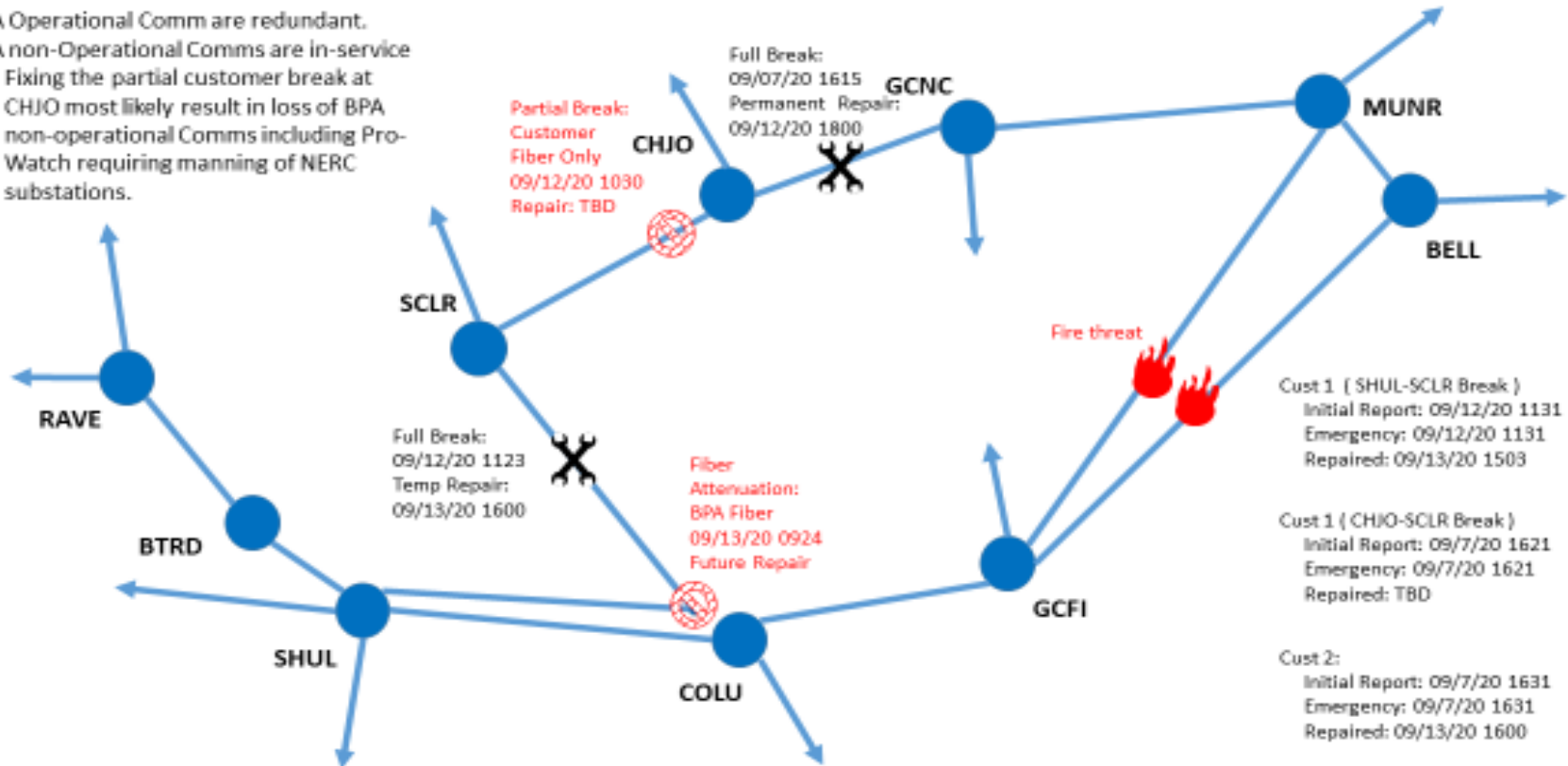
Fiber Activities

Fred Bryant, Fiber Branch Director

Executive Summary: Fiber Breaks starting on 09-07-2020 plus restorations

BPA Operational Comms are redundant.
 BPA non-Operational Comms are in-service

- Fixing the partial customer break at CHJO most likely result in loss of BPA non-operational Comms including Pro-Watch requiring manning of NERC substations.



BPA Situation Report

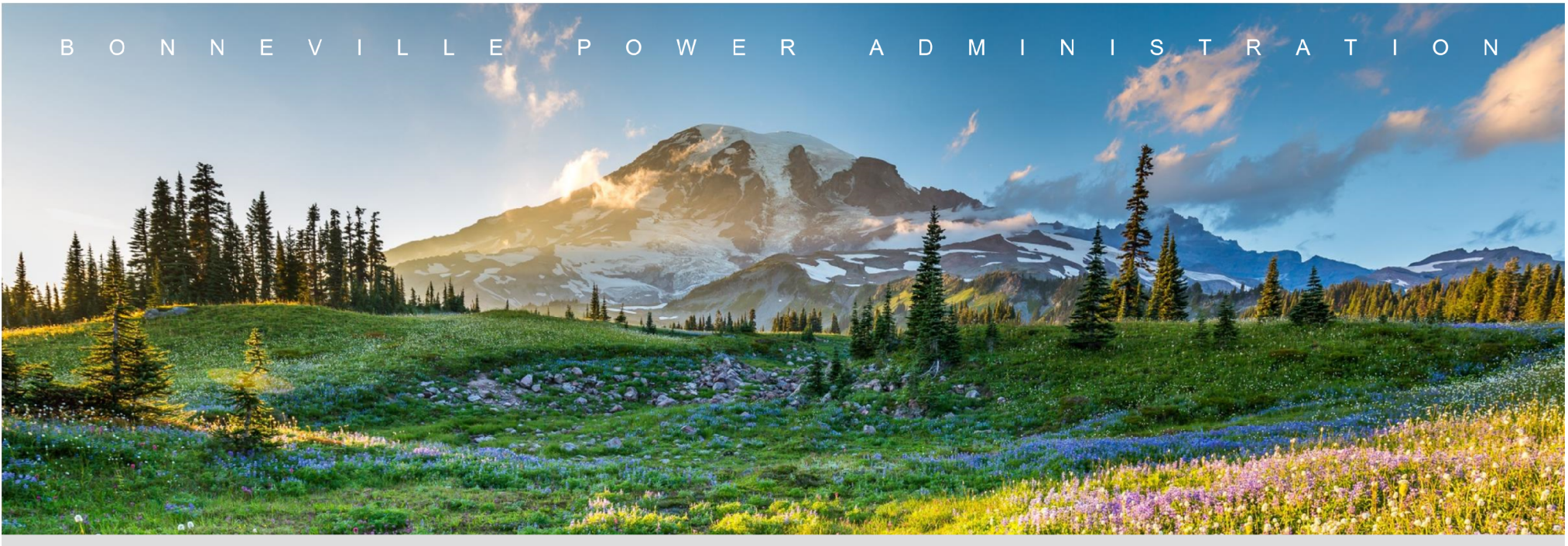
South Region Activities

- Rob Robertsen, South Branch Director
- **Salem:** *Santiam Fire (Riverside Fire may merge with Santiam fire)*
 - **Jones Canyon-Tumble Creek section of Jones Canyon-Santiam#1 230kV:**
 - Active fires impeding patrol, reevaluating 9-14-20
- **Marion Sub:**
 - No change, fire watches on site
- **Eugene:** *Holiday Farm Fire*
 - **Cougar-Holden Creek #1 115kV:** Cougar Powerhouse-Blue River Tap (6 miles)
 - Active fires impeding patrol, progress has been made
 - TLM crews working with tree cutting crews to restore Cougar-Blue River Tap
 - Working with stakeholders to restore POD at Blue River Tap for Lane Electric on 9-17-20

BPA Situation Report

Planning and Logistics Section

- Logistics
 - AMS continues to standby at Columbia and Midway sub pending final restoration plan on the fiber.
 - Materials requests
 - Equipment operators dispatched to assist the crews in the North
 - Cell boosters for responding crews
- Planning
 - Safety observations of conditions on the ground
 - Sequencing of crews for long term (beyond 14 days) restoration
 - Contingency plans for resources



BPA Situation Brief

September 14, 2020

Fire IMT Meeting 10:00 AM



BPA Situation Report

Safety Update

Beasley II, James

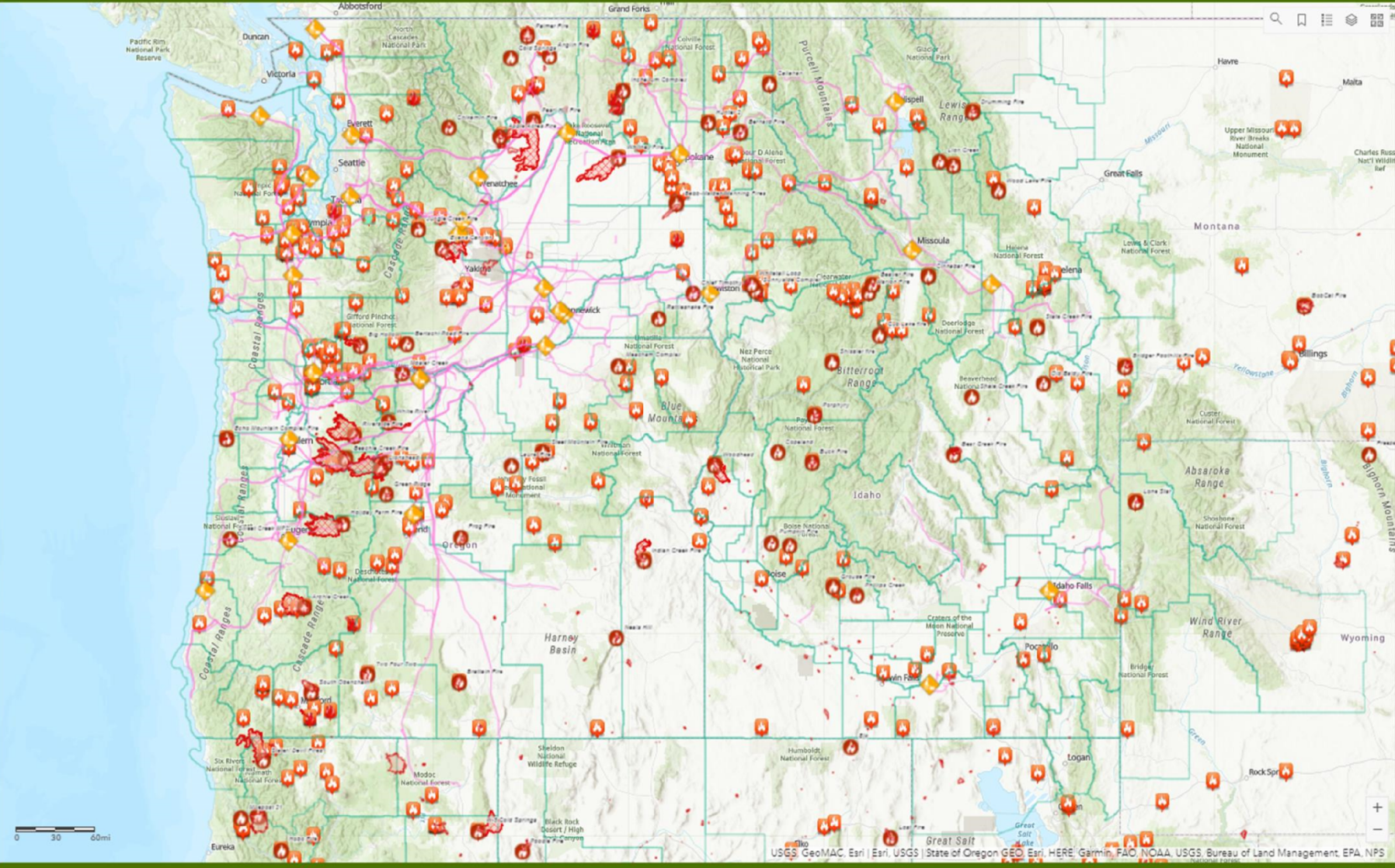


BPA Situation Report

Weather Update

BPA Situation Report

Bonneville Power Administration
Fire Activity Common Operating Picture (COP)



Field Crews

- Alvey TLM - TFEF
- Bell TLM - TFSF
- Chehalis TLM - TFOK
- Chemawa TLM - TFLF
- Covington TLM - TFCF
- Ellensburg TLM - TFWF
- Grand Coulee TLM - TFWK
- Idaho Falls TLM - TFI
- Kalispell TLM - TFKF
- North Bend TLM - TFEF
- Olympia TLM - TFOF
- Pasco TLM - TFPF
- Redmond TLM - TFRF
- Ross TLM - TFKV
- Snohomish TLM - TFFN
- The Dalles TLM - TDFD

USGS, GeoMAC, Esri | Esri, USGS | State of Oregon GEO, Esri, HERE, Garmin, FAO, NOAA, USGS, Bureau of Land Management, EPA, NPS

continuity@bpa.gov 503-230-4660

BPA Situation Report

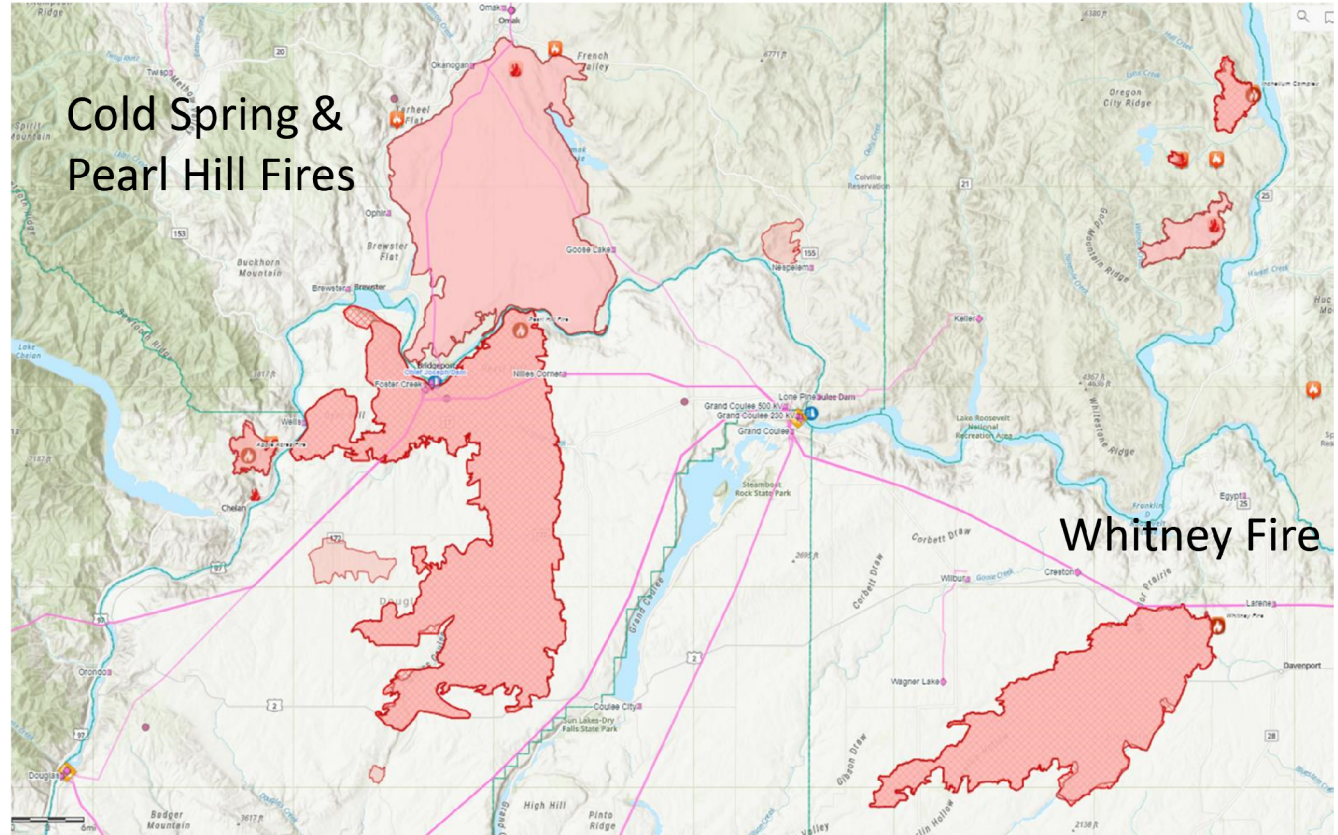
BPA Washington Fires

Cold Spring & Pearl Hill Fires

- Acres Burned: 411,407+
- Counties impacted:
 - Douglas
 - Chelan
 - Okanogan
- Substations
 - Chief Joseph CHJO
 - Okanogan OKAN
 - Nilles Corner NICO
 - East Omak EOMK
 - Brewster BREW
 - Goose Lake GOLK
 - Nespelem NESP

Whitney Fire

- Acres Burned: 125,196+
- Counties impacted:
 - Lincoln
- Substations
 - Wagner Lake WAGL
 - Creston CRES
 - Larene LREN

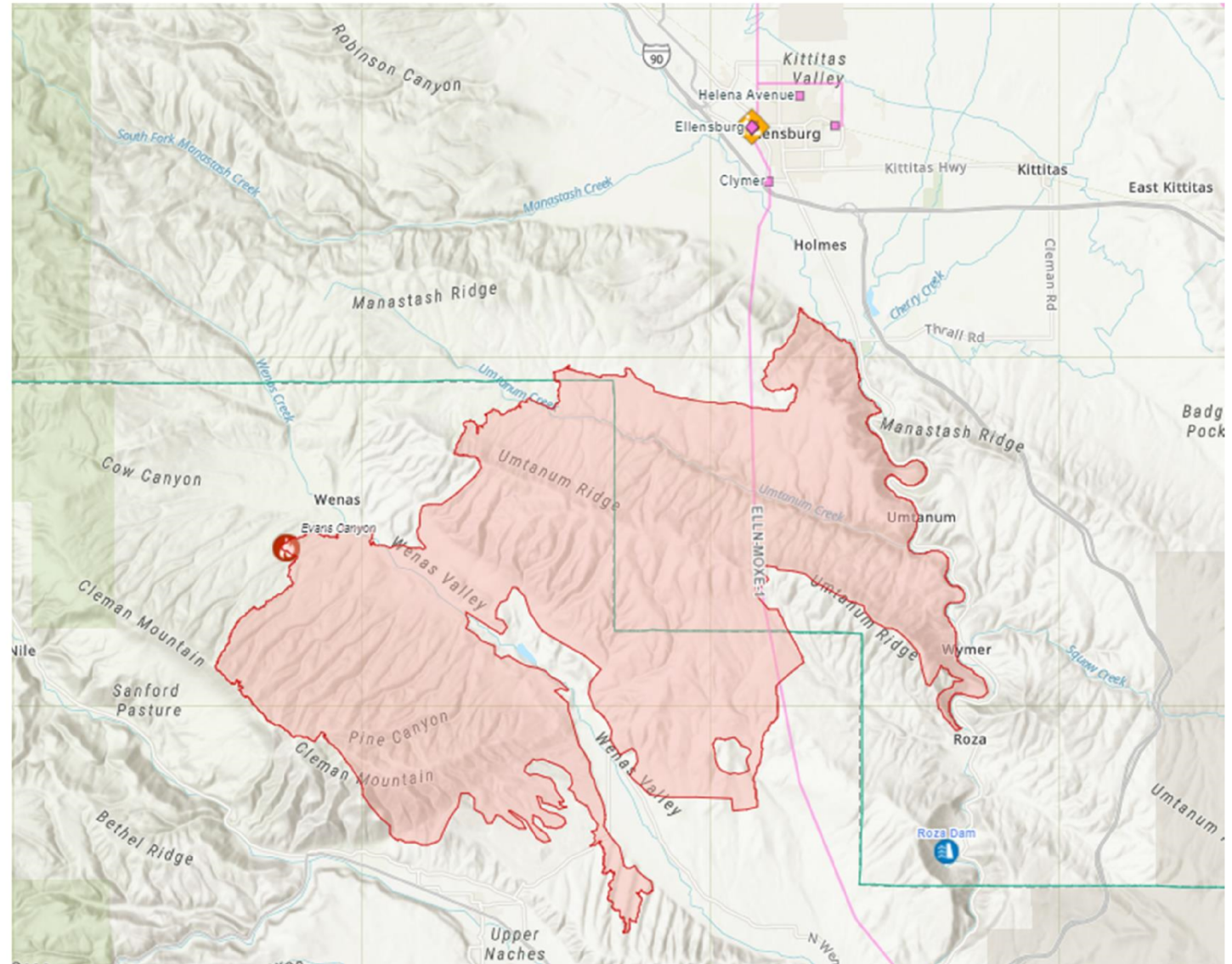


BPA Situation Report

BPA Washington Fires

Watching: Evans Canyon Fire

- Acres Burned: 75,692+
- Counties impacted:
 - Kittitas
 - Yakima
- Substations
 - Clymer CLYM
 - Ellensburg ELDO
 - Dolarway DOLR



BPA Situation Report

BPA Oregon Fires

Riverside Fire

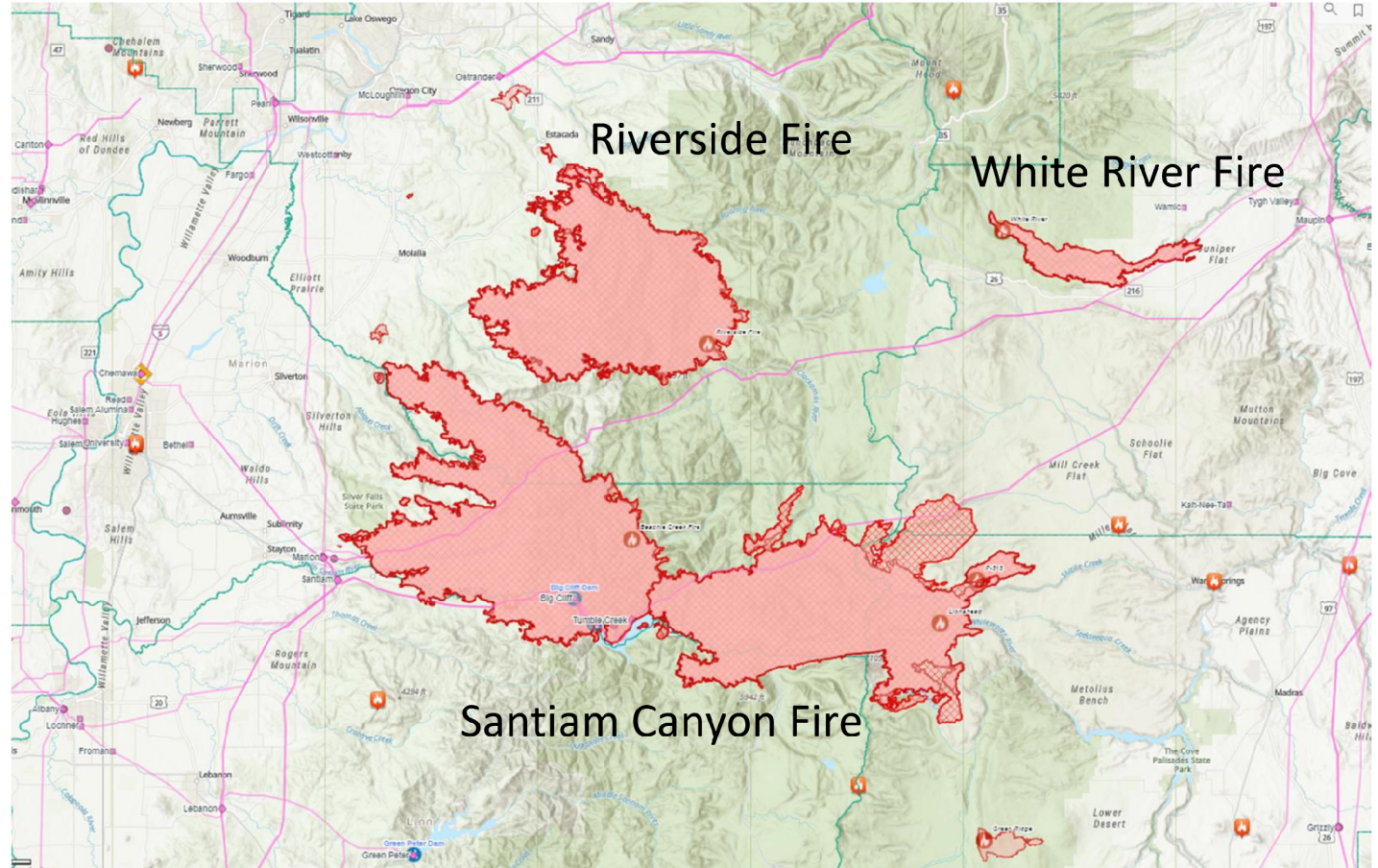
- Acres Burned: 133,50+
- Counties Impacted:
 - Clackamas

White River Fire

- Acres Burned: 17,412+
- Counties Impacted:
 - Wasco

Santiam Canyon Fire

- Acres Burned: 357,106+
- Counties Impacted:
 - Clackamas
 - Marion
 - Linn
- Substations
 - Marion
 - Santiam
 - Detroit DETR
 - Tumble Creek TUMB

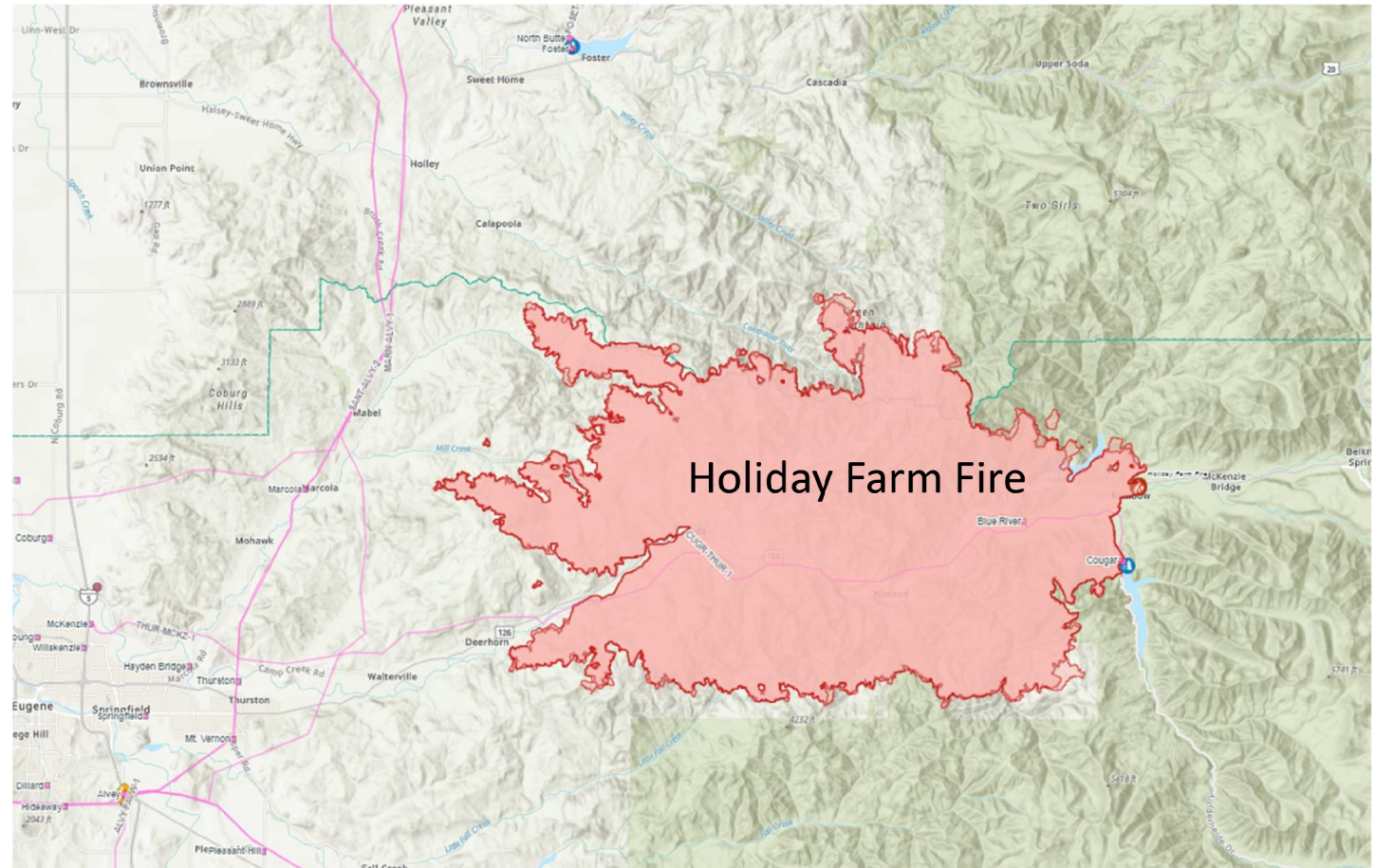


BPA Situation Report

BPA Oregon Fires

Holiday Farm Fire

- Acres Burned:
161,947+
- Counties Impacted:
Lane
- Linn
- Substations
 - Cougar CUGR
 - Blue River BLRI
 - Marcola MRCL
 - Thurston THUR

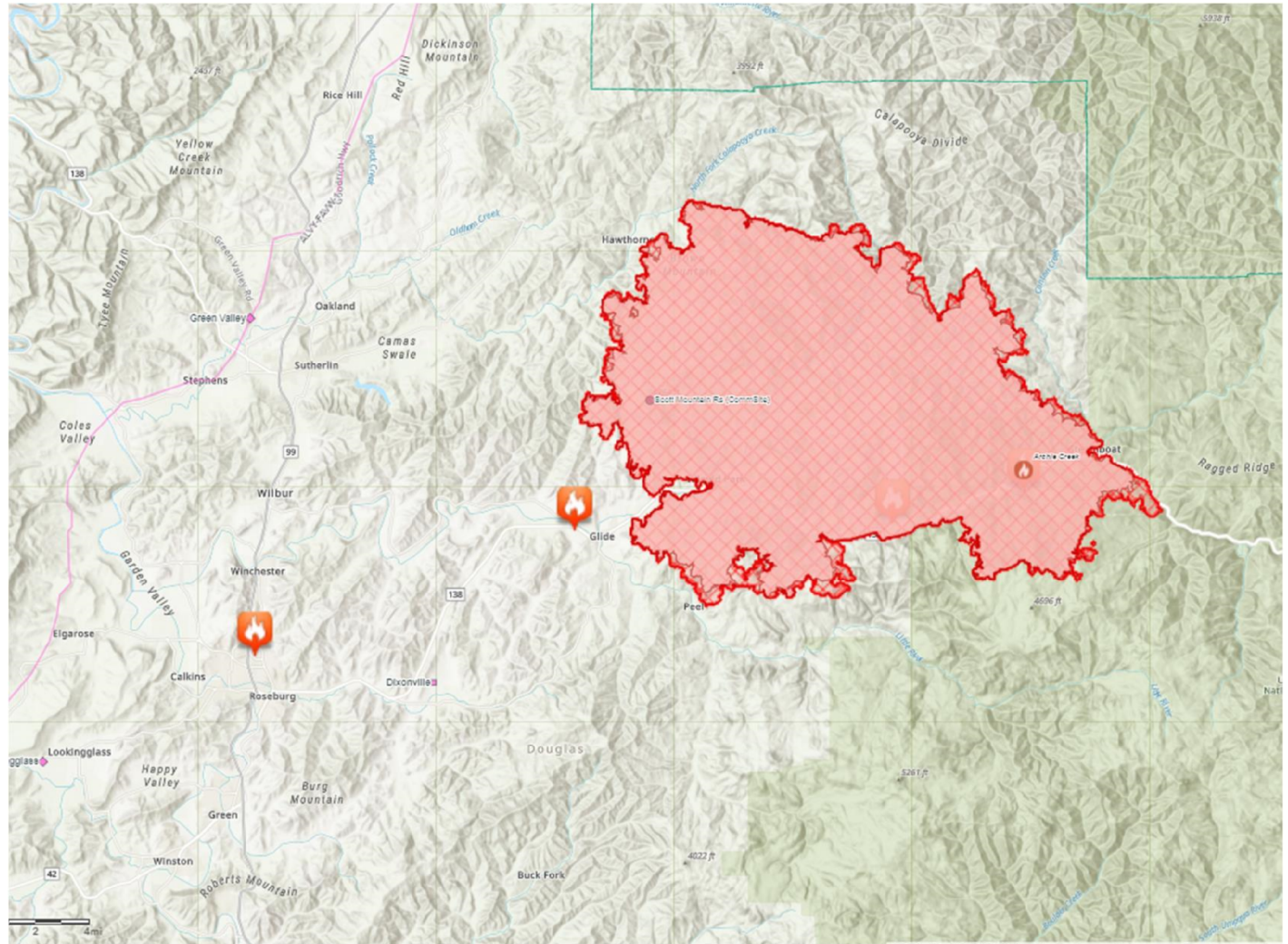


BPA Situation Report

BPA Oregon Fires

Watching: Archie Creek Fire

- Acres Burned: 121,475+
- Counties Impacted: Douglas
- Substations
 - Green Valley GRNV

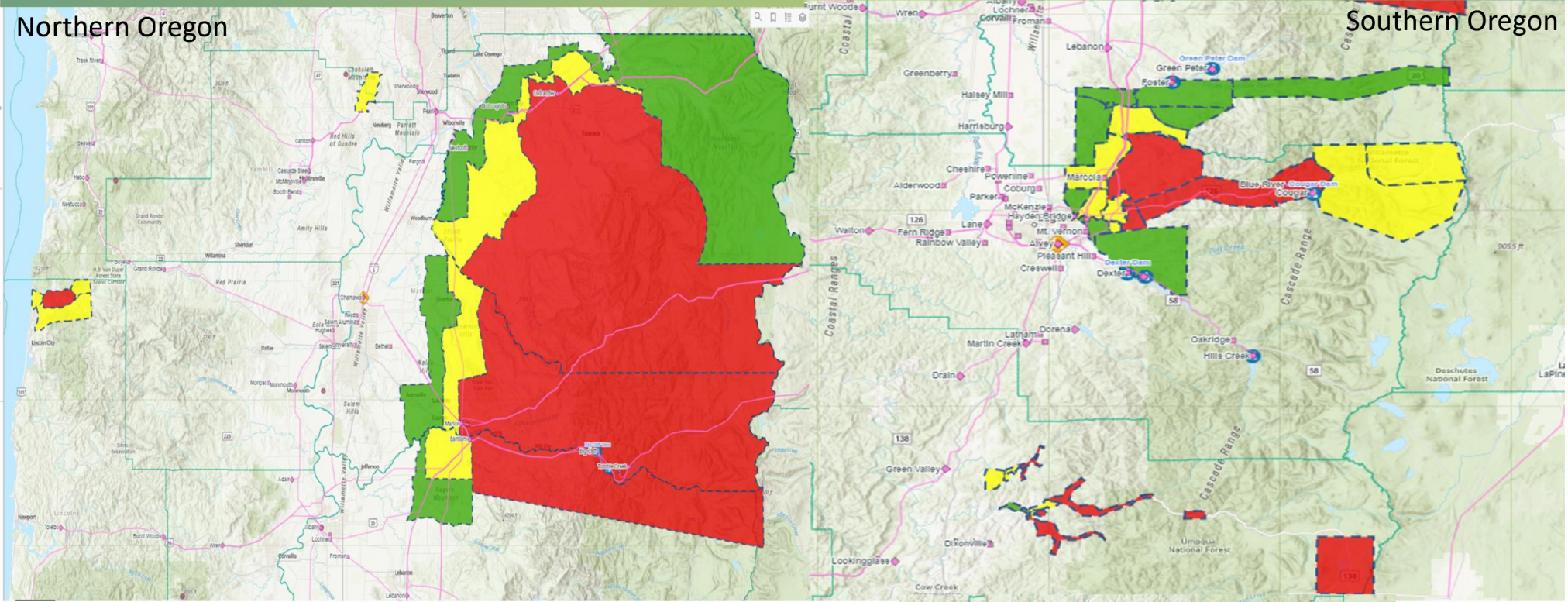


BPA Situation Report

Oregon Evacuation Zones

Northern Oregon

Southern Oregon



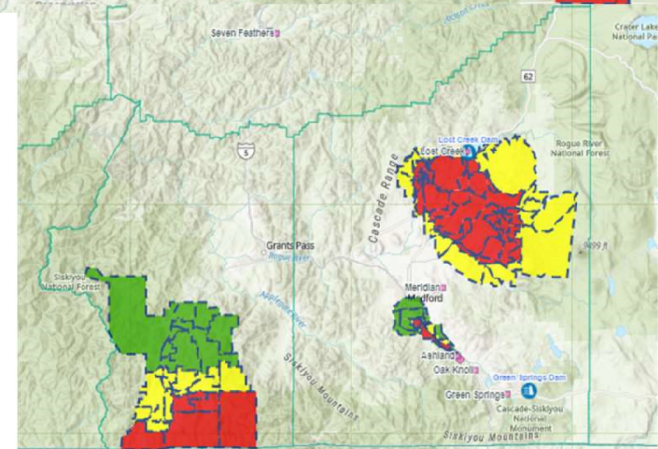
Level 1: BE READY



Level 2: BE SET



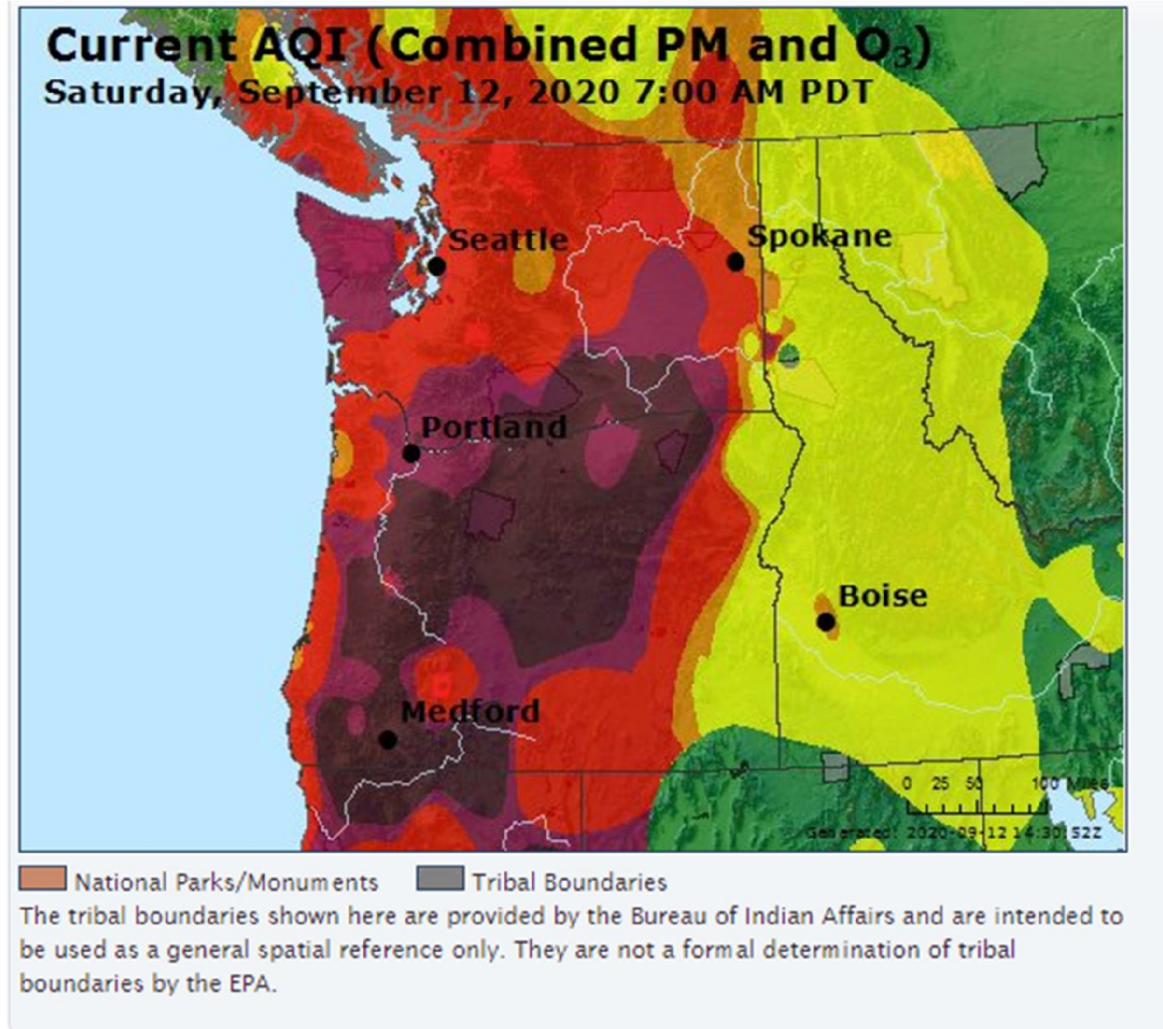
Level 3: GO!



BPA Situation Report

Service Territory Air Quality Report

www.airnow.gov



BPA Situation Report

Operations Section Chief Report

- 7 Districts have suffered some sort of damage.
- Multiple crews working the restoration.
- 5 BPA lines or line sections currently OOS that we are responsible to restore.
- 1 BPA line out for proximity work for fire damage restoration
- Active fires still burning keeping crews from completing assessments or repairs:
 - Sections of Cougar – Thurston 115kv
 - Section of Jone Canyon - Santiam 230kv
- Electrical customers still impacted by BPA restoration:
 - EWEB – ETR TBD – EWEB is not ready to take service
 - Lane Electric – ETR 9-17-20
- Fiber customers still affected by BPA restoration:
 - Noanet – partially restored – full restoration TBD

This document may contain SOC-Restricted Information. Under FERC Standards of Conduct, SOC-Restricted Information may not be shared with Marketing Function Employees (MFEs) unless certain criteria have been met (e.g., voluntary consent by the customer, a public OASIS posting, system emergencies, or other exceptions). Please take care to remove or otherwise redact the SOC-Restricted Information before forwarding or otherwise sharing with Marketing Function Employees.

BPA Situation Report

Dispatch Priorities

Salem/Alvey

1. Jones Canyon-Tumble Creek section of Jones Canyon-Santiam #1 230kv line, (may not be able to access for patrols due to active fire)
2. Cougar-Holden Creek #1 115 line.

** The fire threatening Marion substation remains the biggest concern**

Grand Coulee

1. Grand Coulee-Foster Creek #1 115kv line, (restore normal source to CHJ 500kv SS and investigate CHJ SS issues and Nespelem COOP normal source)
2. Grand Coulee-Chief Joseph #1 and #2 230kv lines
3. Goose Lake-Okanogan section of Grand Coulee-Okanogan #2 115kv line

Buckley remains on engine generators for Station Service power (SS is fed from Jones Canyon-Santiam #1 230kv line) . Fuel needs have been addressed

BPA Situation Report

POD Outages as of 08:00

- Cougar – Holden Creek (some TOP, some ours)
 - Forces out Cougar PH and Carmen Smith generation.
 - Blue River POD for Lane Electric is OOS on this line
- Nilles Corner- Chicken Creek Section Grand Coulee – Foster Creek No 1 115 kV line
 - Normal source to POD still out.
 - Nespelem POD Restored from Douglas. Customer restored.
 - Chief Joe SS other trouble.
- Jones Canyon – Santiam #1 230 KV line
 - Tumble Creek-Santiam section restored
 - Forces out Buckley Station Service
 - Tumble Creek Restored. CPI to restore load, estimate for CPI to pick up load 9/16.
 - Wind Generation restricted to 50% name plate.
- Brewster – Foster Creek (TOP line for Okanogan, not a BPA line)
 - North Bar POD (Douglas Co.) OOS 0345 9/8 (not a BPA Customer)
 - Just listed here as they loop through our system
 - Still out. Eta unknown. 9/11 @ 1115 restored up to Foster Creek.

BPA Situation Report

South Region Activities

Rob Robertsen, South Branch Director

- **Salem:** *Santiam Fire (Riverside Fire may merge with Santiam fire)*
 - **Jones Canyon-Tumble Creek section of Jones Canyon-Santiam#1 230kV:**
 - Active fires impeding patrol, reevaluating 9-14-20
- **Marion Sub:**
 - No change, fire watches on site
- **Eugene:** *Holiday Farm Fire*
 - **Cougar-Holden Creek #1 115kV:** Cougar Powerhouse-Blue River Tap (6 miles)
 - Active fires impeding patrol, progress has been made
 - TLM crews working with tree cutting crews to restore Cougar-Blue River Tap
 - Working with stakeholders to restore POD at Blue River Tap for Lane Electric on 9-17-20

BPA Situation Report

North Region Activities

- **Stefan Schildt, North Branch Director**
 - Line crews restored the fiber break on SHUL – SCLR
 - Restored ZAYO
 - Restored Pro Watch
 - Made progress on GCOU – CHJO #1 230kv
 - Made progress on GCOU – FOST #1 115kv
 - Currently assessing the final fiber break on the CHJO – SCLR
 - Customer fiber only - NOANET
 - ETR – TBD
 - Continue to work on:
 - GCOU – CHJO #1 230kv
 - » ETR – 9-17-20
 - GCOU – Foster Creek #1 115kv
 - » ETR – 9-17-20
 - GCOU – OKAN #2 115kv
 - » ETR - TBD

BPA Situation Report

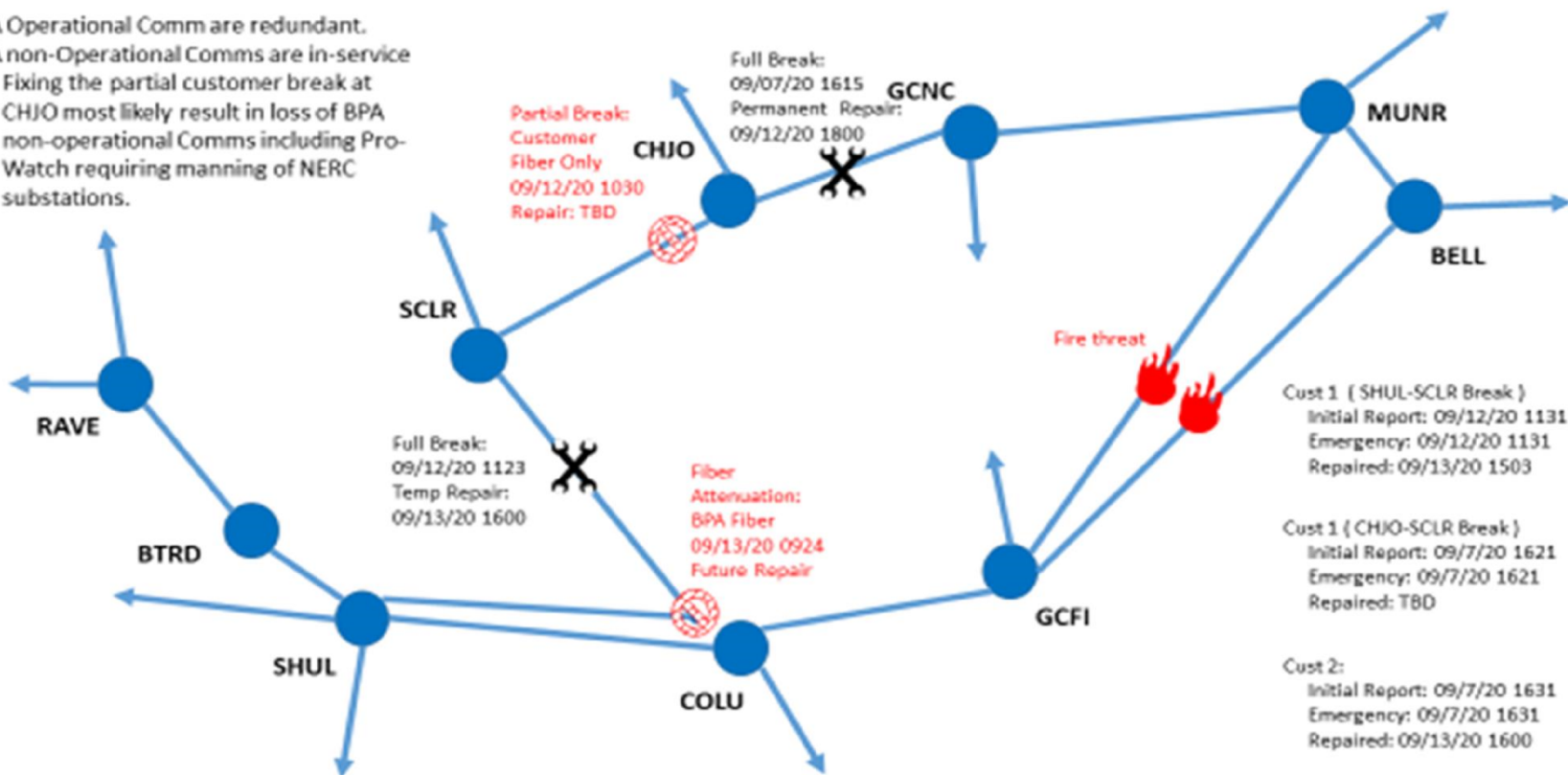
Fiber Activities

Fred Bryant, Fiber Branch Director

Executive Summary: Fiber Breaks starting on 09-07-2020 plus restorations

BPA Operational Comms are redundant.
 BPA non-Operational Comms are in-service

- Fixing the partial customer break at CHJO most likely result in loss of BPA non-operational Comms including Pro-Watch requiring manning of NERC substations.



BPA Situation Report

Logistics & Planning

- Logistics

- AMS continues to standby at Columbia and Midway sub pending final restoration plan on the fiber.
- Materials requests
 - Equipment operators dispatched to assist the crews in the North
 - Cell boosters for responding crews

- Planning

- Safety observations of conditions on the ground
- Sequencing of crews for long term (beyond 14 days) restoration
- Contingency plans for resources

BPA Situation Report

Media Analysis

WASHINGTON FIRES

- Cold Spring Fire
 - No new news.
- Pearl Fire
 - No new news.

OREGON FIRES

- Riverside Fire
 - No new news.
- White River Fire
 - No new news.
- Santiam Canyon Fire
 - No new news.
- Holiday Farm Fire
 - <https://www.registerguard.com/story/news/2020/09/13/oregon-wildfires-holiday-farm-fire-reported-5-contained/5785720002/>
 - Article includes no mention of power lines being involved in starting or helping spread the fire.

BPA Situation Report

Media Analysis Cont.

GENERAL WILDFIRE STORIES OF INTEREST

- <https://www.cnn.com/2020/09/13/us/us-west-fires-sunday/index.html>
- This story mentions several of the Northwest wildfires – but includes no information about power lines or other potential causes of the fires.
- <https://www.cnn.com/2020/09/14/us/oregon-wildfires-monday/index.html>
- This story focuses on the fire near Eugene/Salem – no mention of powers lines or other potential causes.
- <https://komonews.com/news/local/inslee-washington-battling-climate-fires-not-wildfires>
- Governors Inslee and Newsom have begun to highlight the role climate change is playing in the increased severity of wildfires. The Administration believes that is due to forest management. We have a short blurb in our existing Wildfire Mitigation Plan that talks about climate change and good weather information in there. If reporters start to pursue this angle once things calm down on the fire front, I suggest we direct them to the information already available in that document.
- Questions? Please reach out to pio@bpa.gov or fireinfo@bpa.gov.

BPA Situation Report

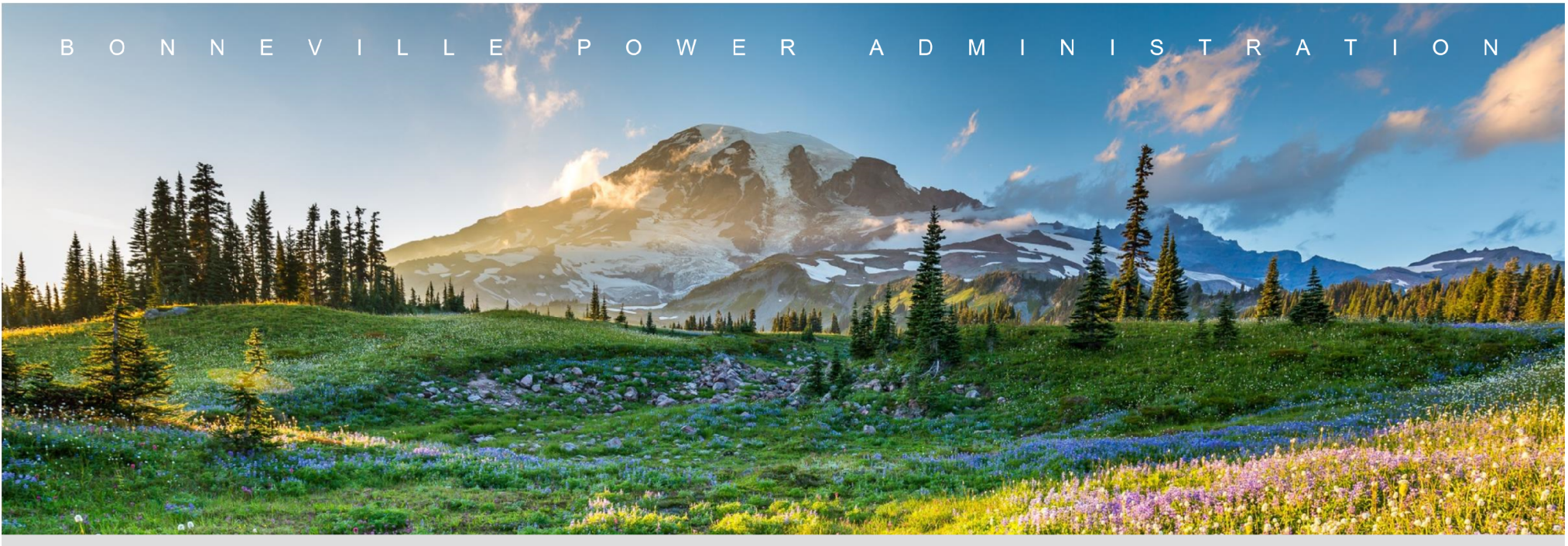
Additional Report Outs

- Liaison Officer- Marybeth O’Leary
- Customer Liaison – Tina Ko

BPA Situation Report

Fire IMT Recording Time

- Please remember to use ABM code **TWAI** for all work performed related to the Fire-Wind incident.



BPA Situation Brief

September 15, 2020

Fire IMT Meeting 10:00 AM

