

## BPA Situation Report

### North Region Activities

- Stefan Schildt, North Branch Director
  - 7 line crews working on fiber and restoration of the line
  - Fiber is currently being spliced with ETR of 9-12-2020
  - Upon completion of fiber:
    - Crews will be split to facilitate restoration on next high priority lines.

## BPA Situation Report

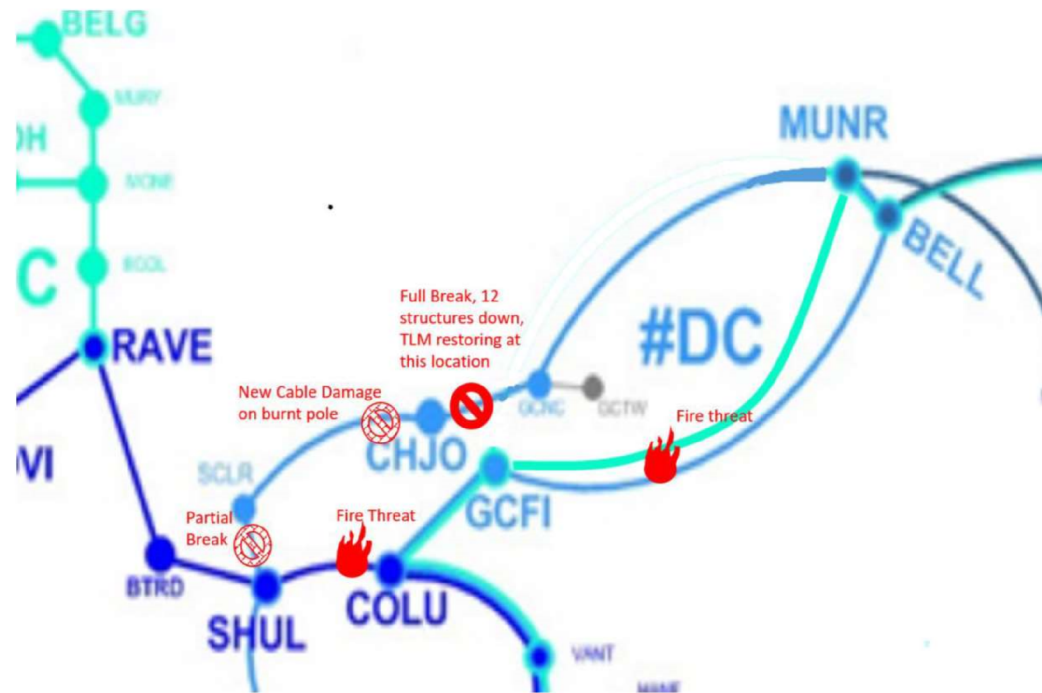
### South Region Activities

- Rob Robertsen, South Branch Director
- **Salem:** *Santiam Fire (Riverside Fire is close)*
  - **Jones Canyon-Tumble Creek section of Jones Canyon-Santiam#1 230kV:**
    - Active fires impeding patrol, reevaluate as conditions change
- **Marion Sub:**
  - No change, fire watches on site
- **Eugene:** *Holiday Farm Fire*
  - **Cougar-Holden Creek #1 115kV:** Cougar Powerhouse-Blue River Tap (6 miles)
    - Active fires impeding patrol, progress has been made
    - Alvey TLM working with tree cutting crews
    - Working with stakeholders to restore POD at Blue River Tap for Lane Electric

# BPA Situation Report

## Fiber Activities

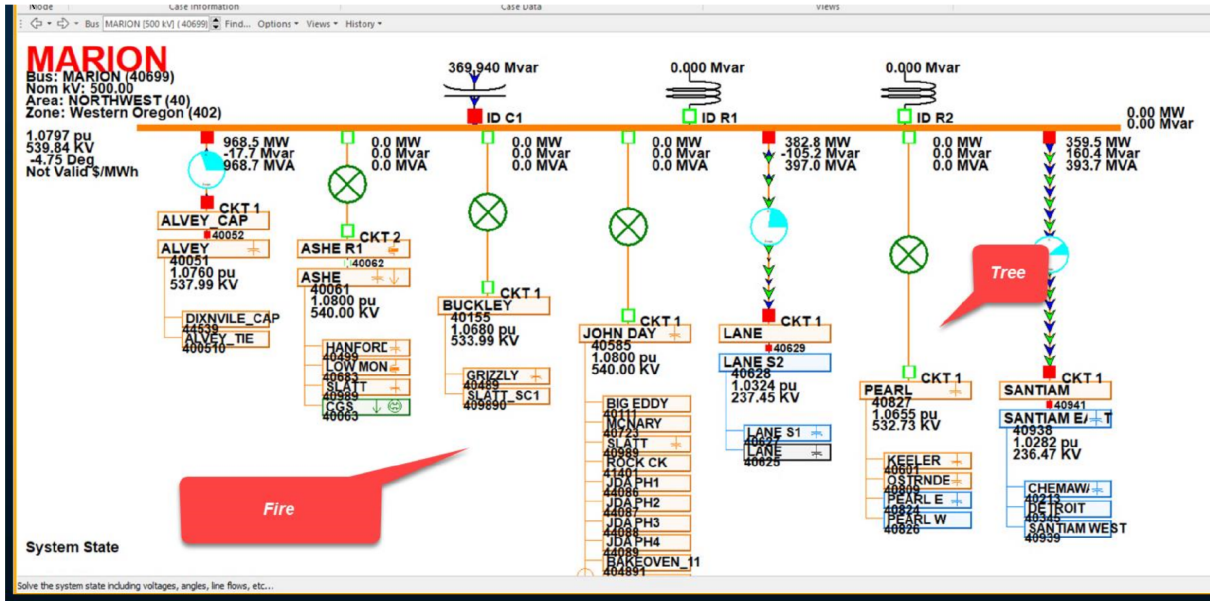
Fred Bryant, Fiber Branch Director



# Meeting Notes

## Outages and Mitigation Plans for Marion due to Wildfires – Nick Haggerty

1. Beachie Fire → Renamed Santiam Fire
    - ~2to3 miles away from station.
  1. Lost 3 lines into Marion...lost Pearl-Marion line also due to tree
  2. Lost all northern sources into Marion.
  3. Load Area ctgs started causing problems with the lines
  4. K-Falls-Meridian ctg plus lines out → voltage collapse due to all flow going thru the 230kV lines (mostly thru sno-goose).
  5. Reclosing attempting Ashe-Marion → failed.
  6. Tried next Marion-John Day → Success. Relieved post ctg issues.
  7. Decision was made with RC coordination. Prectg load shed if lose 4 lines into Marion or Marion station. Mostly in Eugene area and some in Toledo. (Salem/Albany/Eugene and coast).
    - PGE, PAC, BPA impacted utilities
    - 52% PAC (200MW), 42% BPA (~100-150MW), 6% PGE (70-80MW).
      - 450MW Load
    - Manual Load Shed page was used to help determine what BPA to drop.
    - PAC load to shed in Meridian. They had enough load to shed.
- Several possible approaches
- Pre-ctg load shed (about a 25/50% of total load) or prove that load loss wouldn't cascade out of the area (Jerry mentioned a possibly of almost 2000MW of load loss during peak load that could have happened).
- DSO 332 was used by dispatch.
- Concern from John about a new fire and losing Knight, Ostrander. Studies by Khai/Matt with SE case could transfer about 3500MW on the (WOCS?) path before issues arose. Depends on the gen levels.
- Additional Lines out
- Round Butte – Bethel line out
  - Detroit-Santiam Line (carries gens).
  - Jones Canyon –Santiam Line is out



## Issues due to Fiber Break Between Coulee and Chief Joe – John Anasis

- Chief Jo-G Coulee 2 230kV impacted (wood pole line)
- If a second break occurred in the loops we could have lost communication to Schultz/Sickler
- DSO 354 will have more updates in the next coming months to cover more scenarios.

**Situation:** The #DC ring runs on the Grand Coulee-Chief Joseph #2 (wood poles). Twelve structures burnt down, taking down the transmission line and fiber.

The initial break caused no impacts to communications, the communications redirected on the healthy side of the ring. Now, a fire threatens the southern portion of the #DC ring. If the #DC ring is broken at the worst case possible location, expect severe impacts to the power system.

**Summary:** power system impacts for the circuits traveling over the #DC ring shown below.

### RAS:

**Significant impact to generation dropping availability – NWACI and HVDC curtailments likely:**  
Curtail the NWACI and HVDC Intertie to levels supported by remaining RAS gen drop availability.

The following gen drop resources will be unavailable to the RAS A and B controllers.

- Grand Coulee 230 – RAS AC, WS, DC
- Grand Coulee 500 – RAS AC, WS, DC
- Chief Joseph – RAS AC, WS, DC
- Wells PH – RAS AC

**RAS DC B will fail.** One data stream circuit (7E68) simultaneous with the backup Power Rate Relay circuit (7D98), will cause RAS DCB to fail.

**Chief Joseph Brake Local Scheme** – severely impacted – may not function

**AC RAS** – North of Hanford Algorithms will only have single end sensing for both the RAS ACA and ACB.

**Control of RAS** – the WM RAS will have to be controlled from Munro Control Center.

**Relaying (due to loss of relaying)**

TOOP must evaluate the loss of transfer trip on sub 500 kV lines

Remove Grand Coulee – Schultz #1 and #2 lines from service

I

---

Run transformer terminated lines without the transformer: Rocky Reach-Maple Valley and Chief Joseph – Snohomish 3 & 4, and Olympia-Grand Coulee 287 kV line – all at 230 kV.

**IPS Impacts:** will result in Dispatch manually filling in numbers. Too many impacts to resolve without significant effort.

**DATS phone circuits and VHF** – many will be down.

**Gen ICCP** – The fallback is to go to base load status.

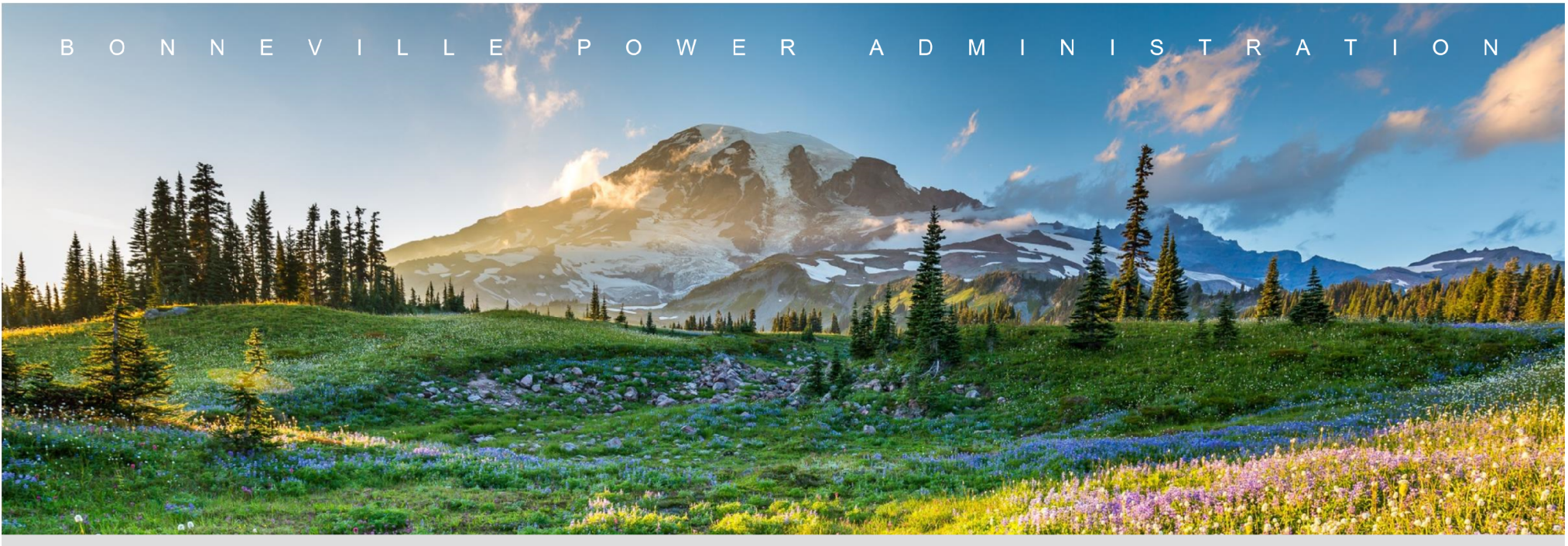
- Chief Joseph
- Grand Coulee 500

**Substation SCADA control we'll lose:**

- Chief Joseph Substation
- Creston
- Ellensburg
- East Omak
- Grand Coulee 230
- Grand Coulee 500
- Grandview
- Moxee
- Okanogan
- Brewster
- Twisp
- Potholes
- Sickler
- Wine Country







# BPA Situation Brief

September 17, 2020

Fire IMT Meeting 10:00 AM



# BPA Situation Report

## Safety Update



- No news is good news.
- Safety is working with Occupational Health & Safety to ensure proper mask filtration. Our IH has identified a better PAPR filter and we are currently looking for a source to procure them from.

### PPE Updates:

- Looks like 400 N-95s went out yesterday and 700 eyewash bottles going out today to Grand Coulee. We have an additional 960 arriving sometime today and another 960 arriving sometime Friday.
- 1,000 additional N95 masks will arrive Monday

Arc Rated face masks are not a substitute for N-95's. N95 are considered a respirator per OSHA. The arc rated face masks are made out of Arc Rated shirt material.

### Injury updates:

- The South has nothing to report
- The North has nothing to report

### Near Hits Safety Concern:

- Nothing to report

# BPA Situation Report

## Weather Update

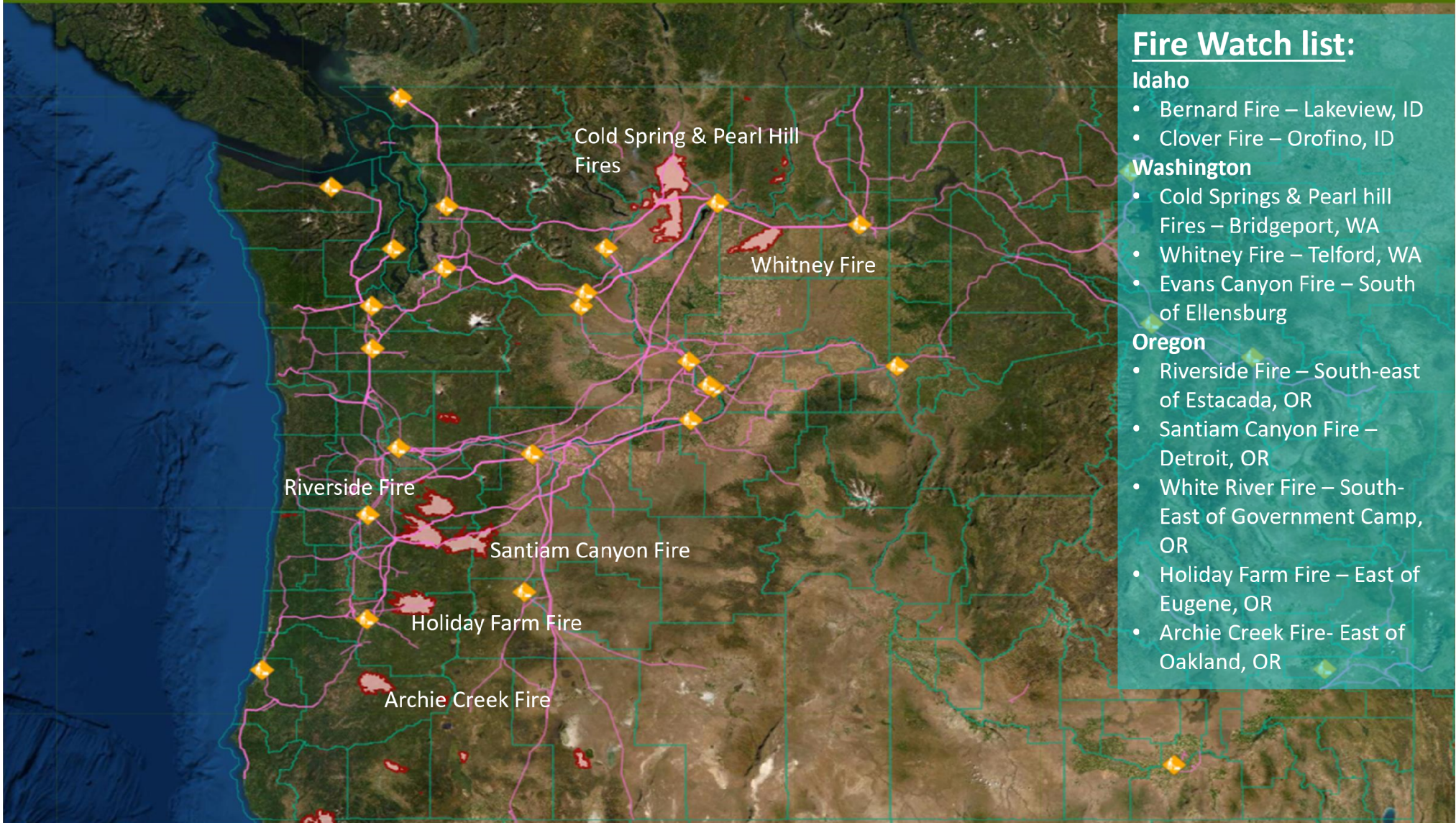
- The weather pattern continues to transition, mostly as expected
- First fall storm system arrives late this afternoon through Friday
  - **Red Flag Warning for SE Oregon and southern ID today for gusty winds and low humidity.** Relative humidity in this area has been slow to recover in this area. Much higher humidity expected tomorrow for this area.
  - Elsewhere, humidity levels continue to climb, and will be high for the next several days.
  - **Risk of landslides and flash flooding is increasing near burn areas, prompting a Flash Flood Watch for the Oregon Cascades and foothills.**
  - Lightning is now likely along and west of the Cascades late this afternoon and tonight, and east of the Cascades on Friday. PGPW will issue a new Transmission Weather Alert for this threat later this morning.
  - Widespread wetting rains expected. Some of it could be heavy with thunderstorms.
- The smoke has cleared out entirely from the coast, and slow improvement is spreading up the Willamette Valley. Significant air quality improvement on track for the entire region on Friday.

# BPA Situation Report



Bonneville Power Administration

## Fire Activity Common Operating Picture (COP)



### Fire Watch list:

#### Idaho

- Bernard Fire – Lakeview, ID
- Clover Fire – Orofino, ID

#### Washington

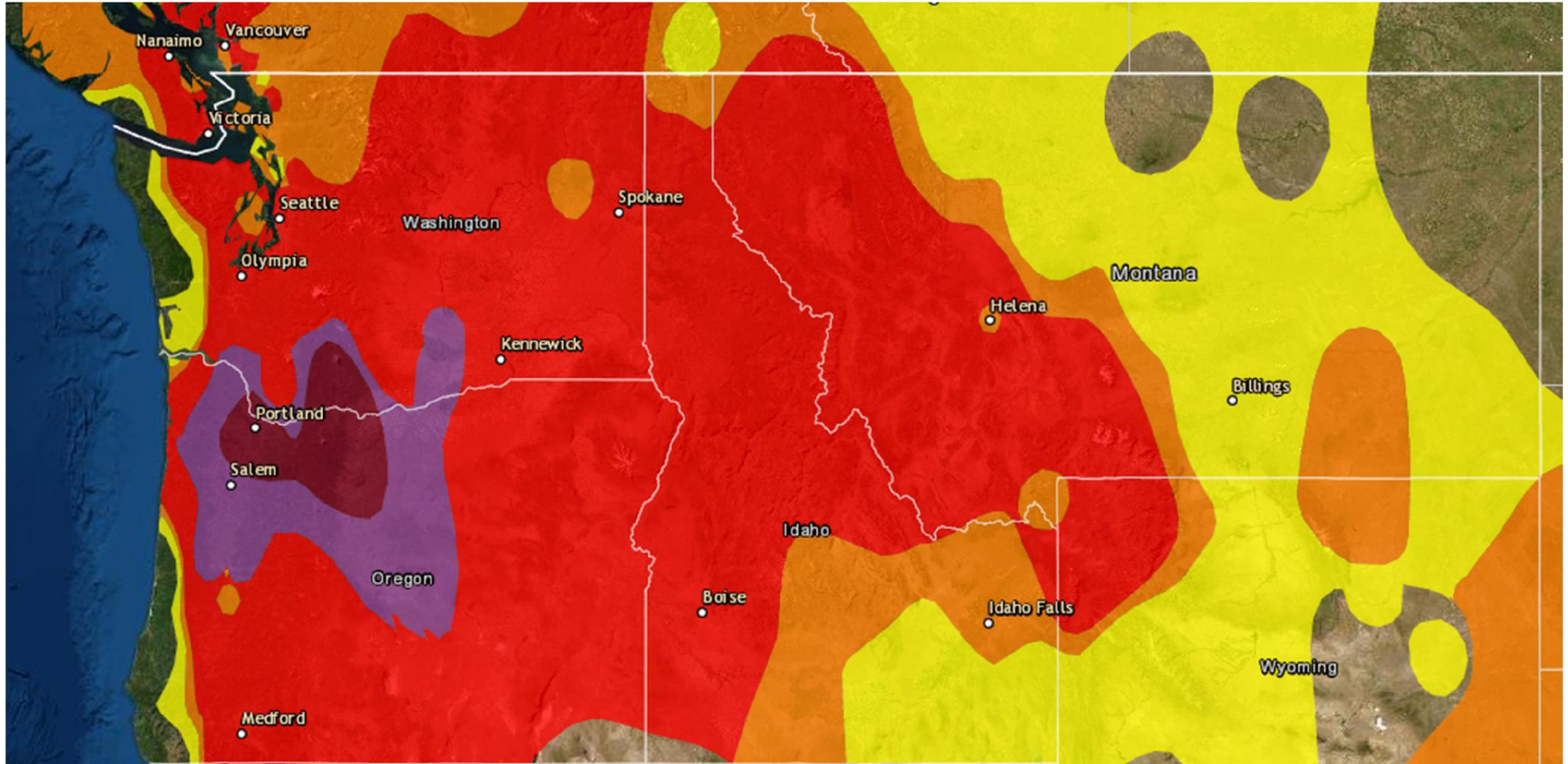
- Cold Springs & Pearl hill Fires – Bridgeport, WA
- Whitney Fire – Telford, WA
- Evans Canyon Fire – South of Ellensburg

#### Oregon

- Riverside Fire – South-east of Estacada, OR
- Santiam Canyon Fire – Detroit, OR
- White River Fire – South-East of Government Camp, OR
- Holiday Farm Fire – East of Eugene, OR
- Archie Creek Fire- East of Oakland, OR

# BPA Situation Report

## Service Territory Air Quality Report



[www.airnow.gov](http://www.airnow.gov)

As of 9/17/20 @ 08:28



# BPA Situation Report

## Oregon Evacuation Zones

Northern Oregon



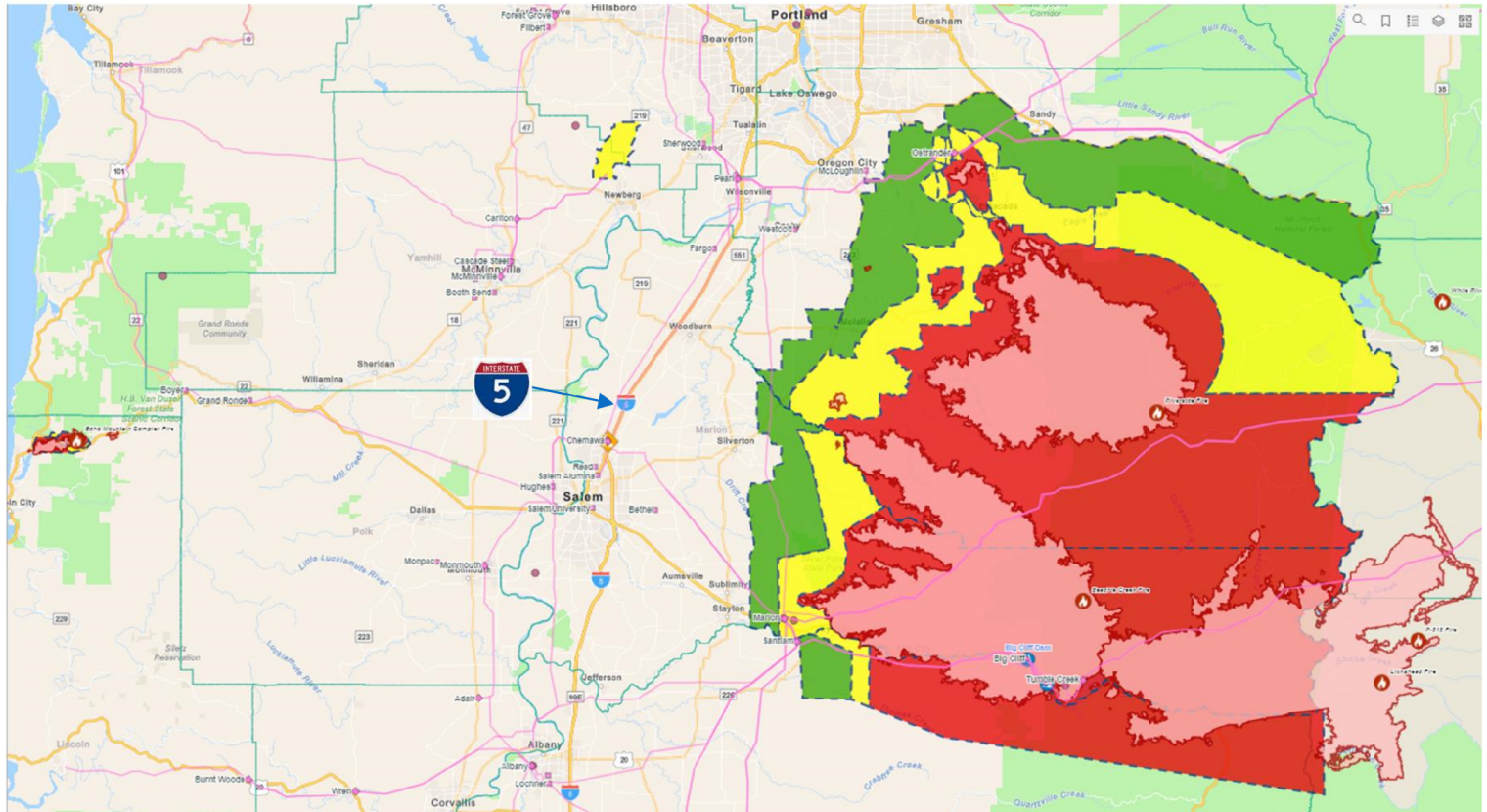
**Level 1: BE READY**



**Level 2: BE SET**



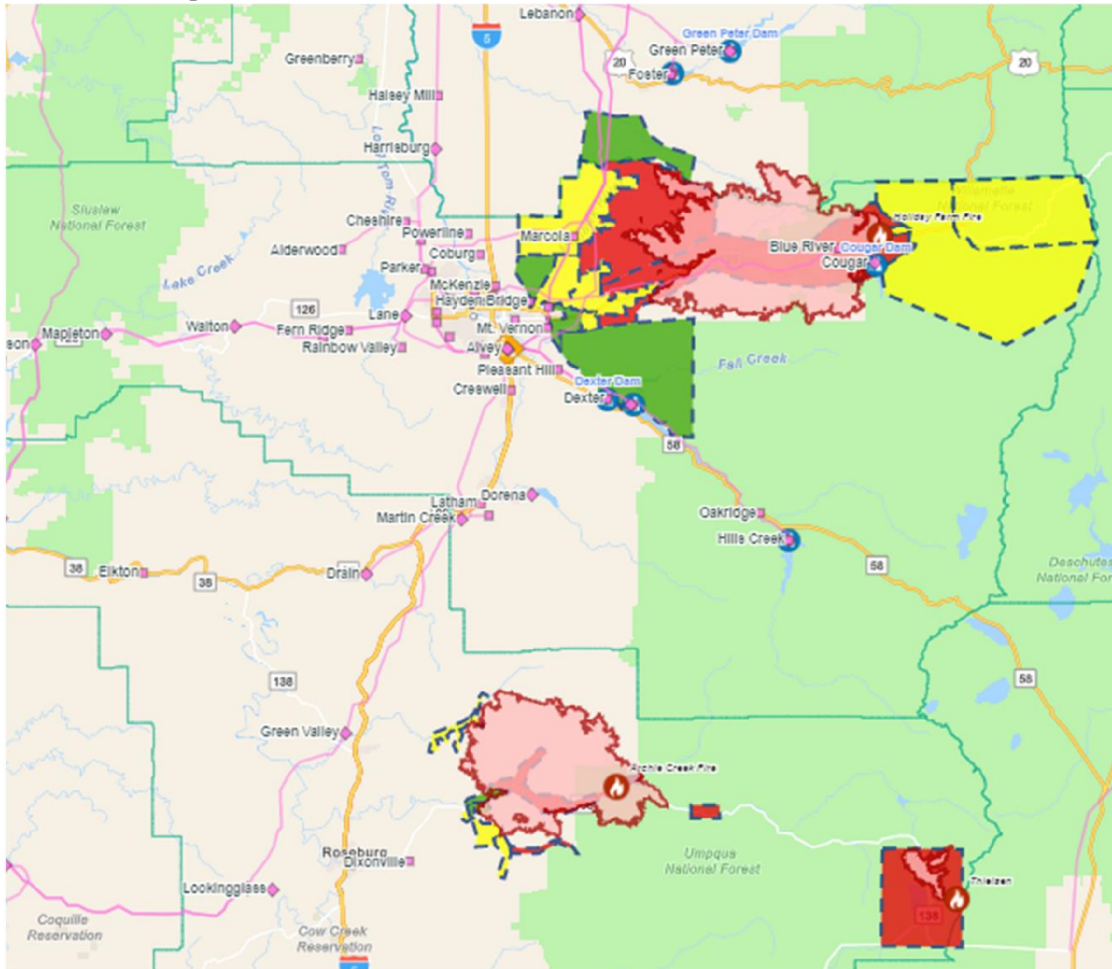
**Level 3: GO!**



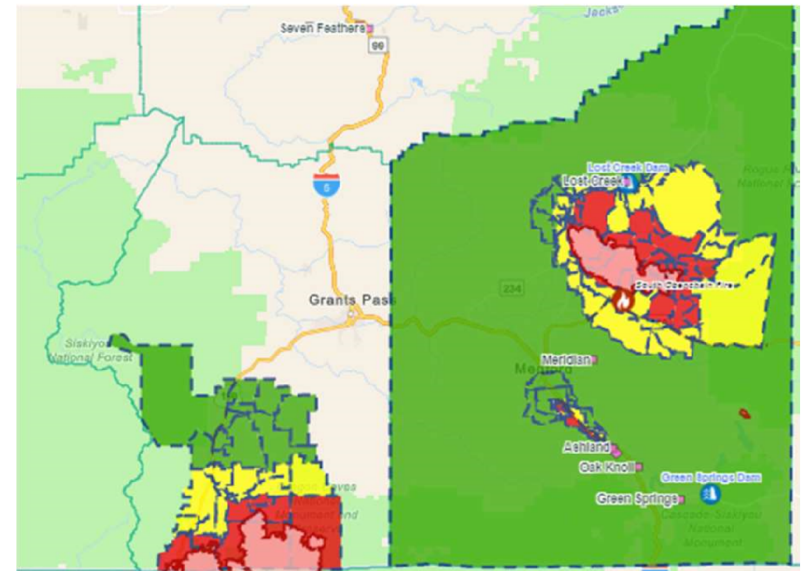
# BPA Situation Report

## Oregon Evacuation Zones

### Central Oregon



### Southern Oregon



**Level 1: BE READY**



**Level 2: BE SET**



**Level 3: GO!**

# BPA Situation Report

## Operations Section Chief Report

- Active fires still burning in the area
- Fire investigations being conducted by outside Agencies and BPA
- 4 BPA lines or line sections currently OOS that we are responsible to restore.
- 2 BPA line out for proximity work for fire damage restoration
- Electrical customers still impacted by BPA restoration:
  - EWEB – ETR TBD – EWEB is not ready to provide generation
  - Lane Electric – ETR 9-21-20
- Fiber customers still affected by BPA restoration:
  - Noanet – partially restored – full restoration of customer 9-18-20
- Mutual Assistance
  - Continue to asses damage to BPA system to determine the need for or to provide mutual assistance
- Working with Operations and Planning to determine long range strategy

This document may contain SOC-Restricted Information. Under FERC Standards of Conduct, SOC-Restricted Information may not be shared with Marketing Function Employees (MFEs) unless certain criteria have been met (e.g., voluntary consent by the customer, a public OASIS posting, system emergencies, or other exceptions). Please take care to remove or otherwise redact the SOC-Restricted Information before forwarding or otherwise sharing with Marketing Function Employees.



# BPA Situation Report

## Dispatch Priorities

- At this point in the restoration efforts the priorities have shifted from North and South priorities to BPA System priorities. At this point in the restoration these are TO, TF, IMT and agency priorities.
- BPA System Priorities for 9/17
  - Assessment of Blue River-Holden Creek section of Cougar-Holden Creek #1 115kv line
  - Assessment of Jones Canyon-Tumble Creek section of Jones Canyon-Santiam #1 230kv line
  - Restoration of Grand Coulee-Chief Joseph #1 230kv line
  - Restoration of Cougar-Holden Creek #1 115kv line
  - Restoration of Jones Canyon-Tumble Creek section of Jones Canyon-Santiam #1 230kv line
  - Restoration of Goose Lake-Okanogan section of Grand Coulee-Okanogan #2 115kv line
- Buckley remains on engine generators for Station Service power (SS is fed from Jones Canyon-Santiam #1 230kv line) . Fuel needs have been addressed

# BPA Situation Report

## POD Outages as of 08:00

- **Cougar – Holden Creek** (some TOP, some ours)
  - Forces out Cougar PH and **Carmen Smith generation (EWEB)**.
  - Blue River POD for **Lane Electric** is OOS on this line
- **Nilles Corner- Chicken Creek Section Grand Coulee – Foster Creek No 1 115 kV line**
  - Normal source to POD still out.
  - Nespelem POD Restored from Douglas. Customer restored.
  - Chief Joe SS other trouble.
- **Jones Canyon – Santiam #1 230 KV line**
  - Tumble Creek-Santiam section restored
  - Forces out Buckley Station Service
  - Wind Generation restricted to 50% name plate.
- **Brewster – Foster Creek** (TOP line for Okanogan, not a BPA line)
  - North Bar POD (Douglas Co.) OOS 0345 9/8 (not a BPA Customer)
  - Just listed here as they loop through our system
  - Still out. ETR 9-22-20. 9/11 @ 1115 restored up to Foster Creek.

# BPA Situation Report

## South Region Activities

- **Salem: *Santiam Fire***
  - **Jones Canyon-Tumble Creek section of Jones Canyon-Santiam#1 230kV:**
    - Patrol starting this morning
  - **Marion Sub:**
    - Normal operations
    - Fire watch ended based on information from Santiam Fire IMT and an onsite assessment
    - Continue daily evaluation and coordination
- **Eugene: *Holiday Farm Fire***
  - **Cougar-Holden Creek #1 115kV:**
    - Cougar - Blue River Tap (6 miles)
      - Restoration work complete
      - Tree Crews continue to cut danger trees ETR - TBD
      - Working with stakeholders to restore POD at Blue River Tap for Lane Electric on 9-21-20
      - Lane Electric energized EG to serve their load upriver
    - Blue River Tap – Holden Creek (21 miles)
      - Patrol was completed yesterday
      - Assessment and work plan EOD 9-17-20
        - » Verifying availability of materials
        - » Actively increasing additional resources

# BPA Situation Report

## North Region Activities

- **Grand Coulee**

- Making progress on the restoration activities on GCOU – CHJO #1 230kv
  - ETR – 9-17-20
- Completed restoration on the GCOU – FOST #1 115kv
  - Leaving OOS for proximity work
- Completed restoration on the GCOU – CHJO #2 230kv
  - Leaving OOS for proximity work
- Continue restoration on GCOU – OKAN #2 115kv
  - ETR – 10-2-20
- Working with the customer on the final fiber break on the CHJO – SCLR
  - Customer fiber only - NOANET
  - ETR – 9-18-20
- Actively reducing resources

# BPA Situation Report

## Logistics & Planning

- Logistics
  - AMS continues to standby at Columbia and Midway sub pending final restoration of the fiber. ETR – 9-18-20
  - Satellite Phones reallocated to response crews
  - Material and equipment needs being met including shipments of masks to response crews
  - Communication issues being mitigated
- Planning
  - Assessment of work priorities based on TOOP load studies show that shifting of resources from North to South Regions will happen next week
  - Sequencing of crew days off to maintain rest day for all workers not to exceed 14 days
  - Tracking of all work cleared from the TLM work schedule and system impacts

# BPA Situation Report

## Media Analysis

### WASHINGTON FIRES

- No new news.

### OREGON FIRES

- **Riverside Fire**

- KOIN TV - Article does not mention utilities.

<https://www.koin.com/news/wildfires/clackamas-county-wildfire-oregon-riverside-fire-evacuations-09162020/>

- **White River Fire**

No new news.

- **Santiam Canyon Fire**

- WILLAMETTE WEEK - Short article detailing the fire. This is the origin of the KATU story included below.

<https://www.wweek.com/news/state/2020/09/15/at-least-13-of-the-oregon-blazes-that-fed-the-beachie-creek-fire-were-started-by-downed-power-lines/>

- KTVZ TV – Eugene, Ore. - Story does not mention utilities.

<https://ktvz.com/news/fire-alert/2020/09/16/gov-brown-visits-fire-hit-santiam-canyon-towns-thanks-first-responders/>

- **Holiday Farm Fire**

- OREGONIAN

<https://www.oregonlive.com/wildfires/2020/09/explosion-sparks-from-power-line-preceded-oregons-holiday-farm-fire-area-residents-say.html>

*"I would have guessed it was a transformer exploding but I can't confirm," he said, later adding that he thinks power should have been cut earlier because of high winds and dry conditions.*

*Lane, like other public utilities in Oregon, buys its power from Bonneville Power Administration, which markets power from 31 hydroelectric dams and a nuclear plant in the region and operates three quarters of its high voltage transmission system.*

*BPA's transmission lines deliver electricity to Lane Electric at a substation just east of Blue River. On its social media account, Lane Electric said that substation was essentially spared except for a tree that fell into a surrounding fence and damaged some minor equipment.*

*Doug Johnson, a spokesman for BPA, said Wednesday that "we don't have any evidence that that our equipment was associated with starting any fires. It's still early, but we don't have any evidence."*

- KVAL TV – Eugene, Ore.

<https://kval.com/news/local/500-structures-destroyed-by-holiday-farm-fire-stands-at-170k-acres-8-contained>

Story mentions EWEB's Leaburg Dam.

*Leaburg Dam is back on, and the reservoir has been refilled, they added - "It is now available as a strategic dip site for heavy helicopters as soon as conditions allow aircraft to fly safely."*

# BPA Situation Report

## Media Analysis

### GENERAL WILDFIRE STORIES OF INTEREST

- <https://katu.com/news/local/bonneville-power-administration-says-it-has-not-been-linked-to-starting-any-wildfires>
- PIO was interviewed by KATU – segment aired on KATU’s 11 p.m. broadcast. Still searching for the video. Excerpt below pulled from information delivered during the interview is on the print story on the KATU website.
  - *Bonneville Power Administration said so far, their power lines have not been linked to the start of any wildfires. The utility company said they only had to shut down one line this year as a prevention method. "We've really ramped up our vegetation management efforts. We trim our trees around the power line corridors. We trim a lot of the vegetation below. That's become a major role. If you reduce the fuel that can catch fire, you're in much better shape when you enter wildfire season," said Doug Johnson from the Bonneville Dam Administration. Johnson said they do most of their prevention in the spring, in addition to cutting back vegetation. They also check equipment and look for things that could potentially spark wildfires.*
- **PIO activities**
  - BPA Connection Need to Know article on Air Quality – reminds managers of existing Safety Air Quality guidance and expands on information about dealing with the potential impact of poor or hazardous air quality. Will post today.
  - PIO is coordinating a response to a media request from the Salem Reporter (newspaper) – request for information about BPA’s assets, damage and response in the Santiam Canyon. Kevin Wingert is coordinating the response.

If you have questions or would like more information about these news clips or our media monitoring efforts, please email [pio@bpa.gov](mailto:pio@bpa.gov) or contact me directly by responding to this email or call me at 503-713-7658.

# BPA Situation Report

## Additional Report Outs

- Liaison Officer (Inter. Gov. Affairs) – Dan James
- Liaison Officer - Marybeth O’Leary
- Customer Liaison – Tina Ko



# BPA Situation Report

## Operations Section Chief Report

- 7 Districts have suffered some sort of damage.
- Multiple crews working the restoration.
- 5 BPA lines or line sections currently OOS that we are responsible to restore.
- 1 BPA line out for proximity work for fire damage restoration
- Active fires still burning keeping crews from completing assessments or repairs:
  - Sections of Cougar – Thurston 115kv
  - A Section of Jones Canyon - Santiam 230kv
- Electrical customers still impacted by BPA restoration:
  - EWEB – ETR TBD – EWEB is not ready to take service
  - Lane Electric – ETR 9-17-20
- Fiber customers still affected by BPA restoration:
  - Noanet – partially restored – full restoration TBD
- Mutual Assistance
  - Continue to asses damage to BPA system to determine the need for or to provide mutual assistance.

This document may contain SOC-Restricted Information. Under FERC Standards of Conduct, SOC-Restricted Information may not be shared with Marketing Function Employees (MFEs) unless certain criteria have been met (e.g., voluntary consent by the customer, a public OASIS posting, system emergencies, or other exceptions). Please take care to remove or otherwise redact the SOC-Restricted Information before forwarding or otherwise sharing with Marketing Function Employees.

# BPA Situation Report

## Management Objectives

- North Region
  - Chief Joe- Sickler Fiber optic cable splice prep
  - Continued progress on access roads and line repair on Grand Coulee-Chief Joe #1 and #2 230 KV, and Grand Coulee-Foster Creek #1 115kv lines
- South Region
  - Effecting repairs to the Cougar Blue River Tap
  - Clearing trees on the Cougar Blue River Tap
  - Maintaining fire watch at Marion

# BPA Situation Report

## Dispatch Priorities

### Salem/Alvey

1. Jones Canyon-Tumble Creek section of Jones Canyon-Santiam #1 230kv line, (may not be able to access for patrols due to active fire)
2. Cougar-Holden Creek #1 115 line.

\*\* The fire threatening Marion substation remains the biggest concern\*\*

### Grand Coulee

1. Grand Coulee-Foster Creek #1 115kv line, (restore normal source to CHJ 500kv SS and investigate CHJ SS issues and Nespelem COOP normal source)
2. Grand Coulee-Chief Joseph #1 and #2 230kv lines
3. Goose Lake-Okanogan section of Grand Coulee-Okanogan #2 115kv line

Buckley remains on engine generators for Station Service power (SS is fed from Jones Canyon-Santiam #1 230kv line) . Fuel needs have been addressed

# BPA Situation Report

## POD Outages as of 08:00

- Cougar – Holden Creek (some TOP, some ours)
  - Forces out Cougar PH and **Carmen Smith generation (EWEB)**.
  - Blue River POD for **Lane Electric** is OOS on this line
- Nilles Corner- Chicken Creek Section Grand Coulee – Foster Creek No 1 115 kV line
  - Normal source to POD still out.
  - Nespelem POD Restored from Douglas. Customer restored.
  - Chief Joe SS other trouble.
- Jones Canyon – Santiam #1 230 KV line
  - Tumble Creek-Santiam section restored
  - Forces out Buckley Station Service
  - Tumble Creek Restored. CPI to restore load, estimate for CPI to pick up load 9/16.
  - Wind Generation restricted to 50% name plate.
- Brewster – Foster Creek (TOP line for Okanogan, not a BPA line)
  - North Bar POD (Douglas Co.) OOS 0345 9/8 (not a BPA Customer)
  - Just listed here as they loop through our system
  - Still out. Eta unknown. 9/11 @ 1115 restored up to Foster Creek.

# BPA Situation Report

## South Region Activities

- **Salem:** *Santiam Fire (Riverside Fire may merge with Santiam fire)*
  - **Jones Canyon-Tumble Creek section of Jones Canyon-Santiam#1 230kV:**
    - Active fires impeding patrol, reevaluating 9-14-20
  - **Marion Sub:**
    - Normal operations
    - Preventive fire watch on site
- **Eugene:** *Holiday Farm Fire*
  - **Cougar-Holden Creek #1 115kV:** Cougar Powerhouse-Blue River Tap (6 miles)
    - Active fires impeding patrol, progress has been made
    - TLM crews working with tree cutting crews to restore Cougar-Blue River Tap
    - Working with stakeholders to restore POD at Blue River Tap for Lane Electric on 9-17-20

# BPA Situation Report

## North Region Activities

- **Grand Coulee**

- Line crews restored the fiber break on SHUL – SCLR
  - Restored ZAYO
  - Restored Pro Watch
- Making progress on the restoration activities on GCOU – CHJO #1 230kv
  - ETR – 9-17-20
- Making progress on the restoration activities on GCOU – FOST #1 115kv
  - ETR – 9-17-20
- Started restoration on GCOU – OKAN #2 115kv
  - ETR – TBD
- Currently assessing the final fiber break on the CHJO – SCLR
  - Customer fiber only - NOANET
  - ETR – TBD

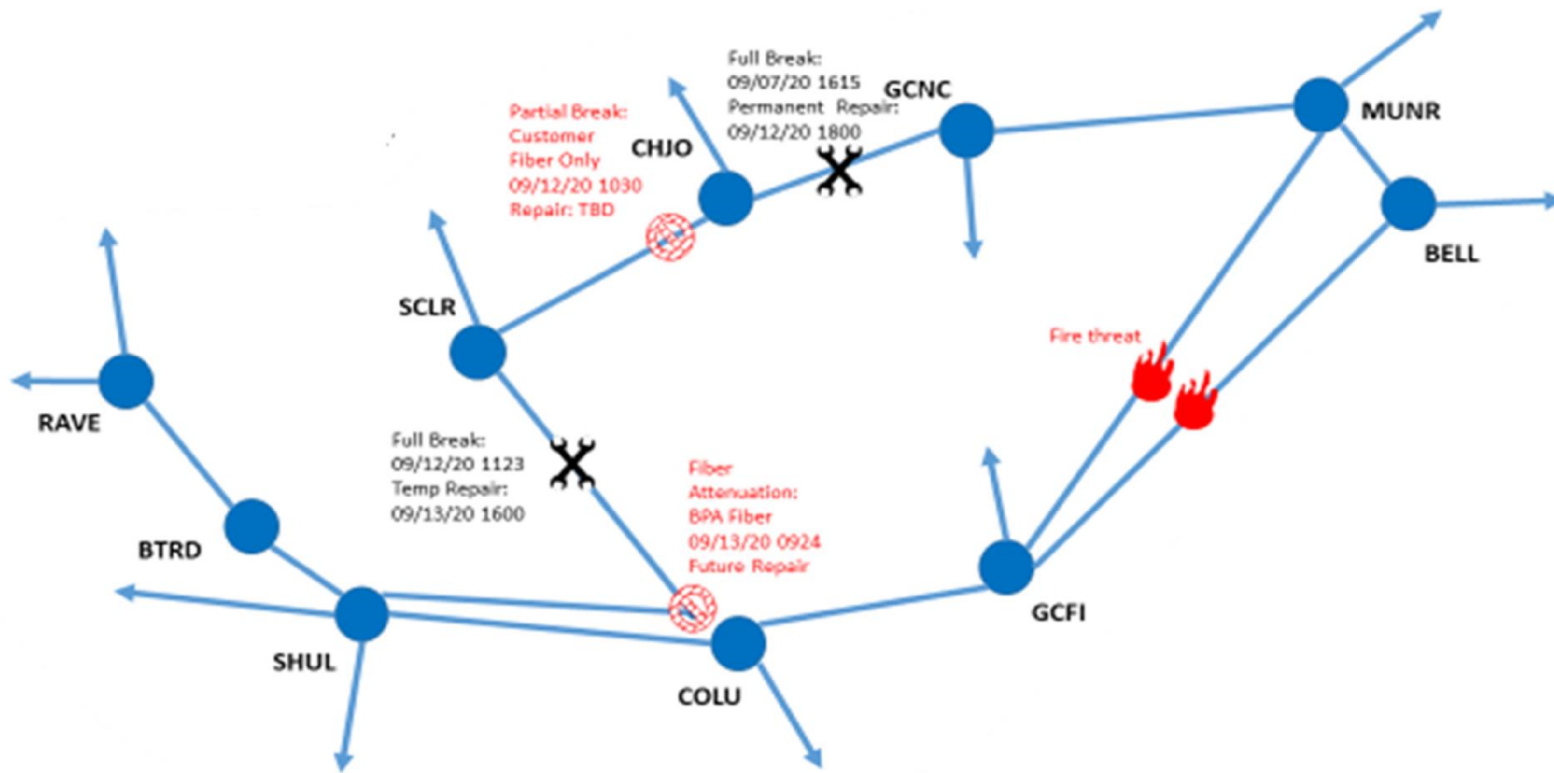
# BPA Situation Report

## Logistics & Planning

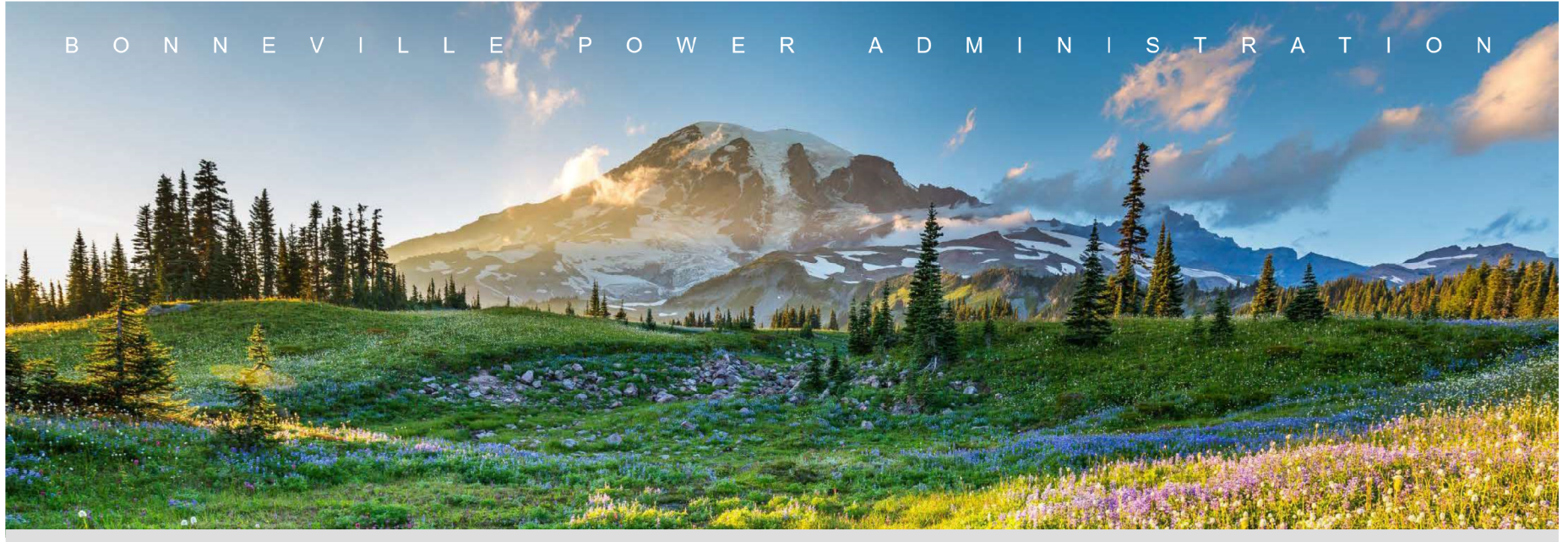
- **Logistics**
  - AMS continues to standby at Columbia and Midway sub pending final restoration plan on the fiber.
  - Material needs are being met
- **Planning**
  - Safety observations of conditions on the ground
  - Sequencing of crews for long term (beyond 14 days) restoration
  - Contingency plans for resources

# BPA Situation Report

## Fiber Activities Appendix







# BPA Executive Brief

September 15, 2020

Fire IMT Meeting 1:00 PM



# BPA Situation Report

## Safety Update








- **Change in structure**
  - Lead – Primary Safety POC:
    - IMT Safety officer – Ryan Brady
  - Supporting Ryan behind the scenes:
    - Field Safety support North – James Beasley
    - Field Safety support South – Rob Reid
    - IH support – Linda La
- **Safety is working with Occupational Health & Safety to ensure proper mask filtration.**
- **PPE Updates:**
  - 1,900 N95 masks & 1,900 bottles of eye wash solution arriving today
  - 1,000 additional N95 masks will arrive Monday
- **Injury updates**
  - Life Changing leg injury
  - Grounding issue with line crew removing tree from line
  - Electrical Contact Incident
- **The TF Seniors are meeting about a stand down for tomorrow.**

# BPA Situation Report



## Weather Update

- Weather situation is virtually unchanged from yesterday. Humidity remains high west of the Cascades, and moderate east of the Cascades. Winds remain light.
- We notice from the GACCs that all fires in the region either no longer spreading, or gradually coming under better containment as of this morning.
- The weather will change very little through Thursday: Moderate temperatures, higher humidity, little wind and poor air quality.
- Widespread rain is expected on the west side on Thursday, then spreading east Friday.
- We will continue to monitor the potential for flash flooding near burn scars, which will be a growing concern as the fall rainy season begins within the next 2 weeks.

SEATTLE PORTLAND SPOKANE TRI-CITIES

Tue 9/15	Wed 9/16	Thu 9/17	Fri 9/18	Sat 9/19	Sun 9/20	Mon 9/21
 Smoke	 Smoke	 Rain	 Rain	 Rain	 Partly Cloudy	 Mostly Sunny
61 / 68	60 / 69	61 / 71	59 / 67	57 / 68	55 / 70	53 / 69








SEATTLE PORTLAND SPOKANE TRI-CITIES

Tue 9/15	Wed 9/16	Thu 9/17	Fri 9/18	Sat 9/19	Sun 9/20	Mon 9/21
 Smoke	 Smoke	 Smoke	 Rain	 Rain	 Mostly Sunny	 Sunny
52 / 75	54 / 77	53 / 74	55 / 72	52 / 69	52 / 72	49 / 75

SEATTLE PORTLAND SPOKANE TRI-CITIES

Tue 9/15	Wed 9/16	Thu 9/17	Fri 9/18	Sat 9/19	Sun 9/20	Mon 9/21
 Smoke	 Smoke	 Rain	 Rain	 Rain	 Partly Cloudy	 Mostly Sunny
61 / 68	60 / 69	61 / 71	59 / 67	57 / 68	55 / 70	53 / 69

SEATTLE PORTLAND SPOKANE TRI-CITIES

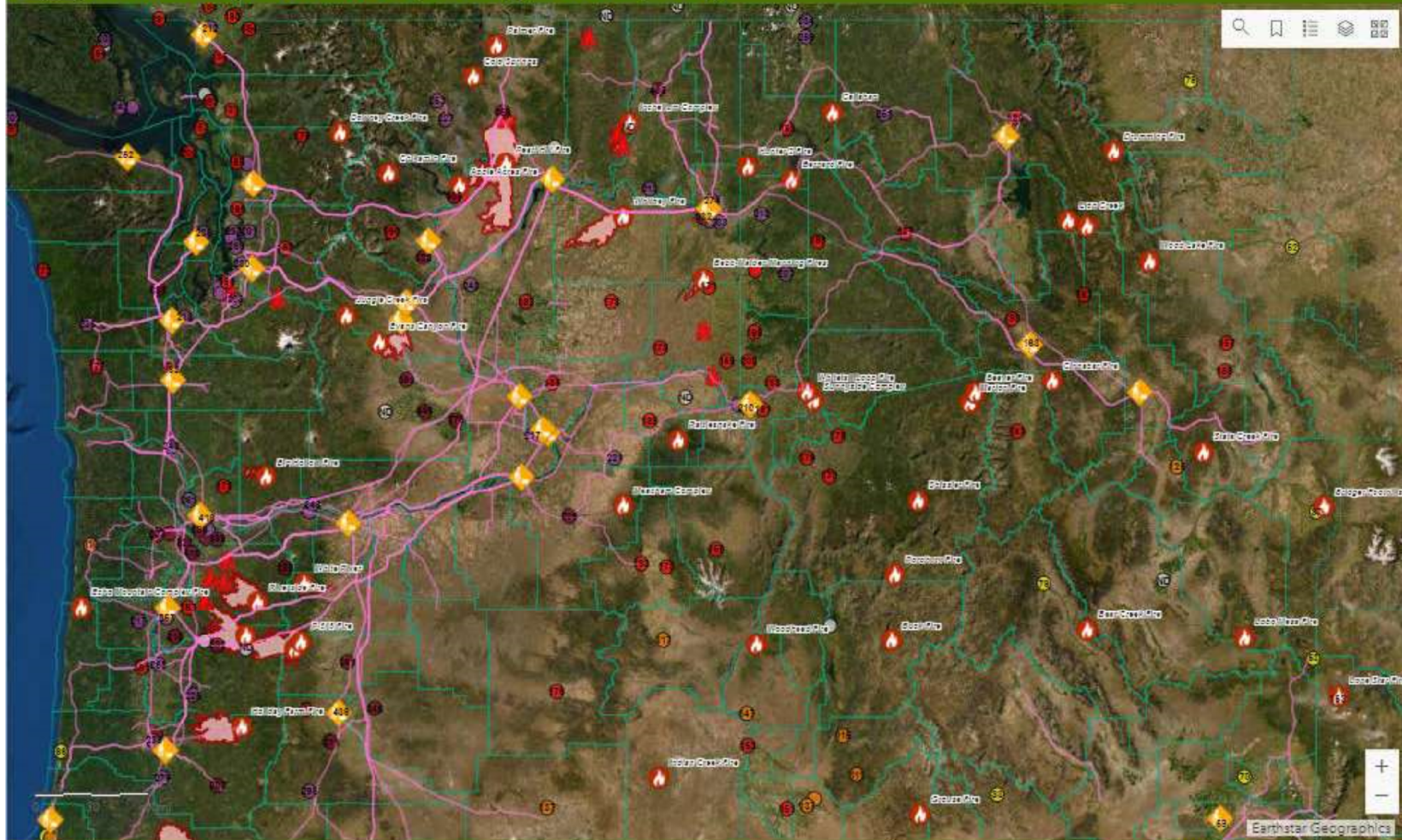
Tue 9/15	Wed 9/16	Thu 9/17	Fri 9/18	Sat 9/19	Sun 9/20	Mon 9/21
 Smoke	 Smoke	 Rain	 Rain	 Rain	 Partly Cloudy	 Mostly Sunny
60 / 72	61 / 76	63 / 73	61 / 69	58 / 69	55 / 72	54 / 72

# BPA Situation Report



Bonneville Power Administration

## Fire Activity Common Operating Picture (COP)



### Field Crews

- Alvey TLM - TFEF
- Bell TLM - TFSF
- Chehalis TLM - TFOK
- Chemawa TLM - TFLF
- Covington TLM - TFCF
- Ellensburg TLM - TFWF
- Grand Coulee TLM - TFWK
- Idaho Falls TLM - TFIF
- Kalispell TLM - TFKF
- North Bend TLM - TFEP
- Olympia TLM - TFOF
- Pasco TLM - TFPF
- Redmond TLM - TFRF
- Ross TLM - TFKV
- Snohomish TLM - TFNF
- The Dalles TLM - TFDF

[continuity@bps.gov](mailto:continuity@bps.gov) 503-230-4660

# BPA Situation Report

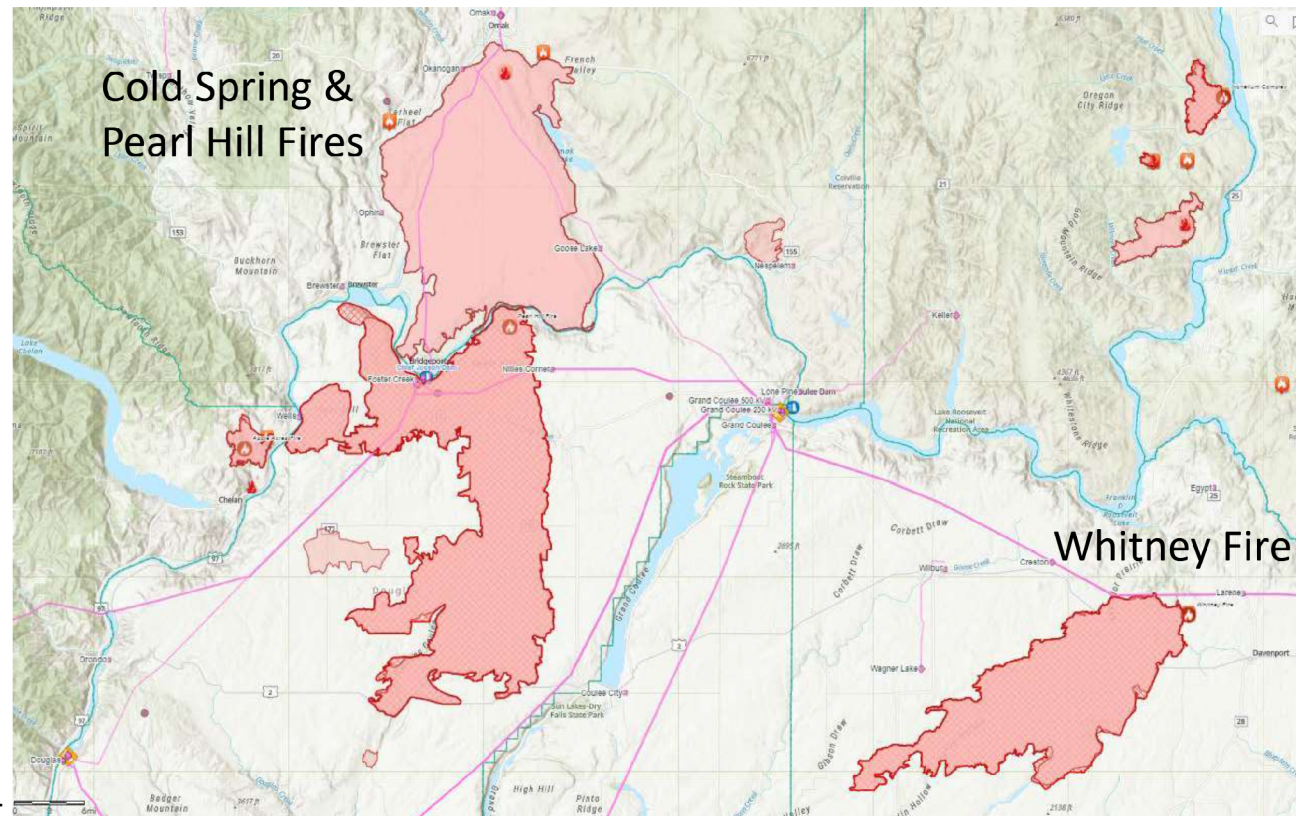
## BPA Washington Fires

### Cold Spring & Pearl Hill Fires

- Acres Burned: 412,570+
- Counties impacted:
  - Douglas
  - Chelan
  - Okanogan
- Substations
  - Chief Joseph CHJO
  - Okanogan OKAN
  - Nilles Corner NICO
  - East Omak EOMK
  - Brewster BREW
  - Goose Lake GOLK
  - Nespelem NESP

### Whitney Fire

- Acres Burned: 125,196+
- Counties impacted:
  - Lincoln
- Substations
  - Wagner Lake WAGL
  - Creston CRES
  - Larene LREN

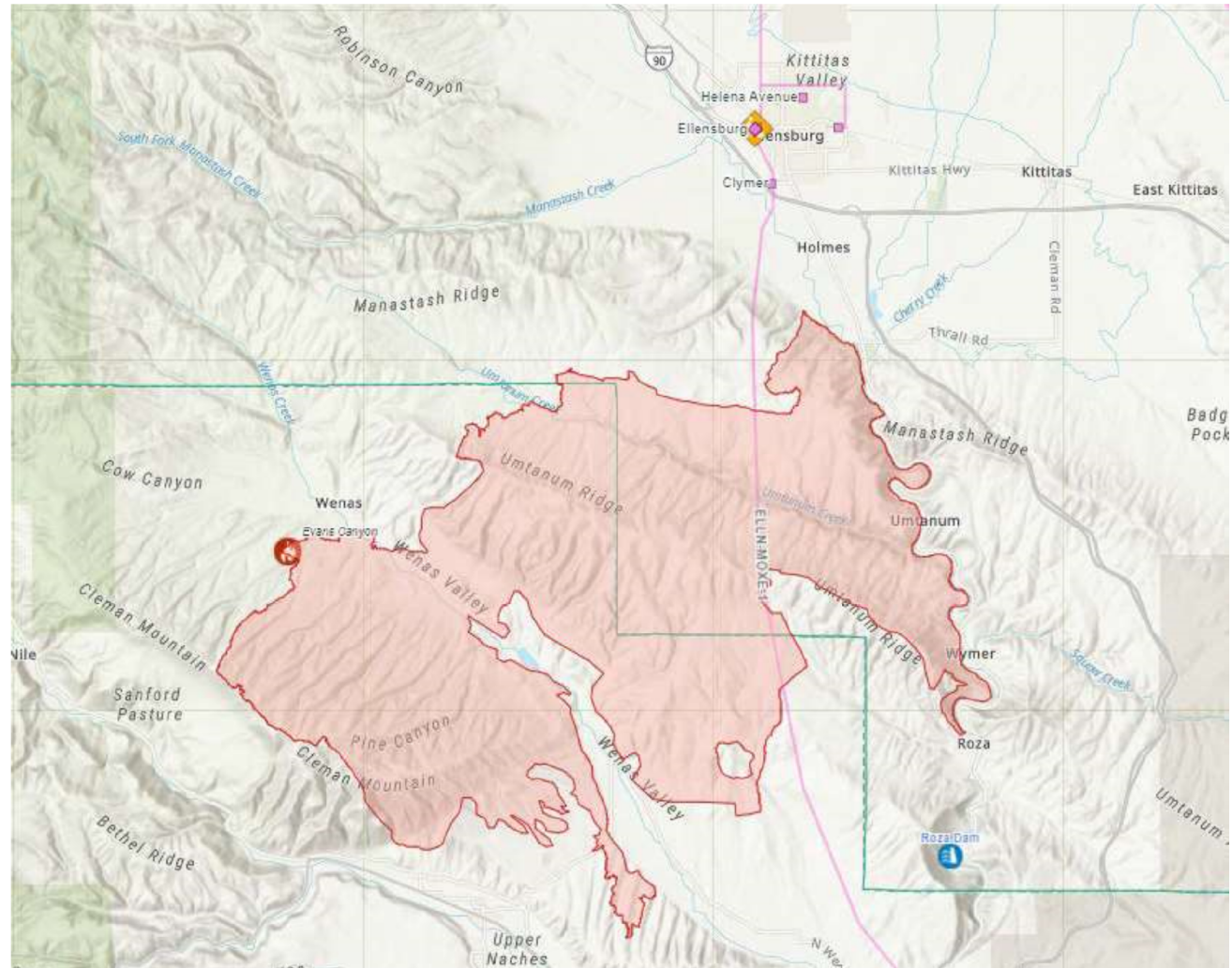


# BPA Situation Report

## BPA Washington Fires

### Watching: Evans Canyon Fire

- Acres Burned: 75,795+
- Counties impacted:
  - Kittitas
  - Yakima
- Substations
  - Clymer CLYM
  - Ellensburg ELDO
  - Dolarway DOLR



# BPA Situation Report

## BPA Oregon Fires

### Riverside Fire

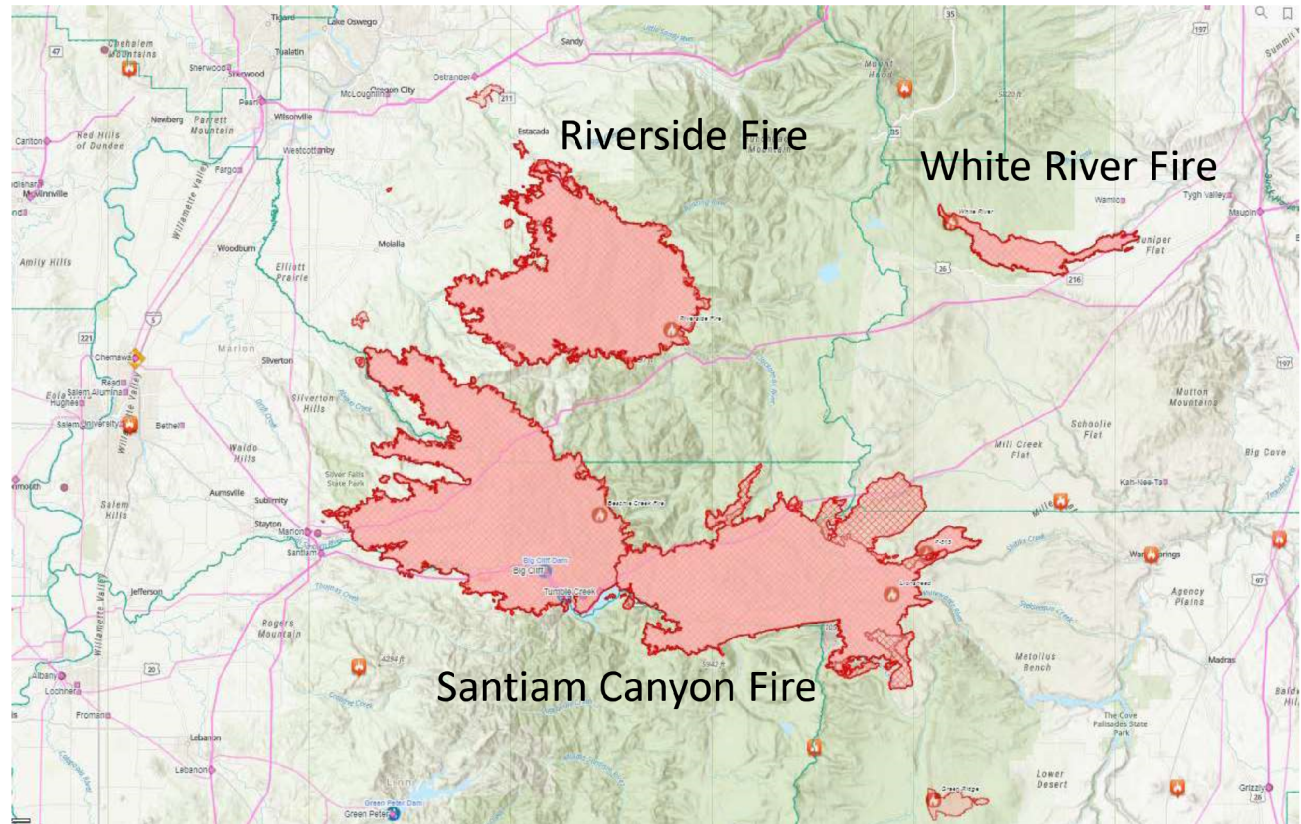
- Acres Burned: 133,508+
- Counties Impacted:
  - Clackamas

### White River Fire

- Acres Burned: 17,412+
- Counties Impacted:
  - Wasco

### Santiam Canyon Fire

- Acres Burned: 357,106+
- Counties Impacted:
  - Clackamas
  - Marion
  - Linn
- Substations
  - Marion
  - Santiam
  - Detroit DETR
  - Tumble Creek TUMB



# BPA Situation Report

## Idaho

### Watching: Bernard Fire

- Acres Burned: 876+
- Counties Impacted:
  - Kootenai
  - Bonner
- Line: Lancaster-Noxon No 1 (230 kV)





# BPA Situation Report

## Idaho

### Clover Fire

- Acres Burned: 4,708+
- Counties Impacted:
  - Clearwater
- Substations:
  - Dworshak DWOK

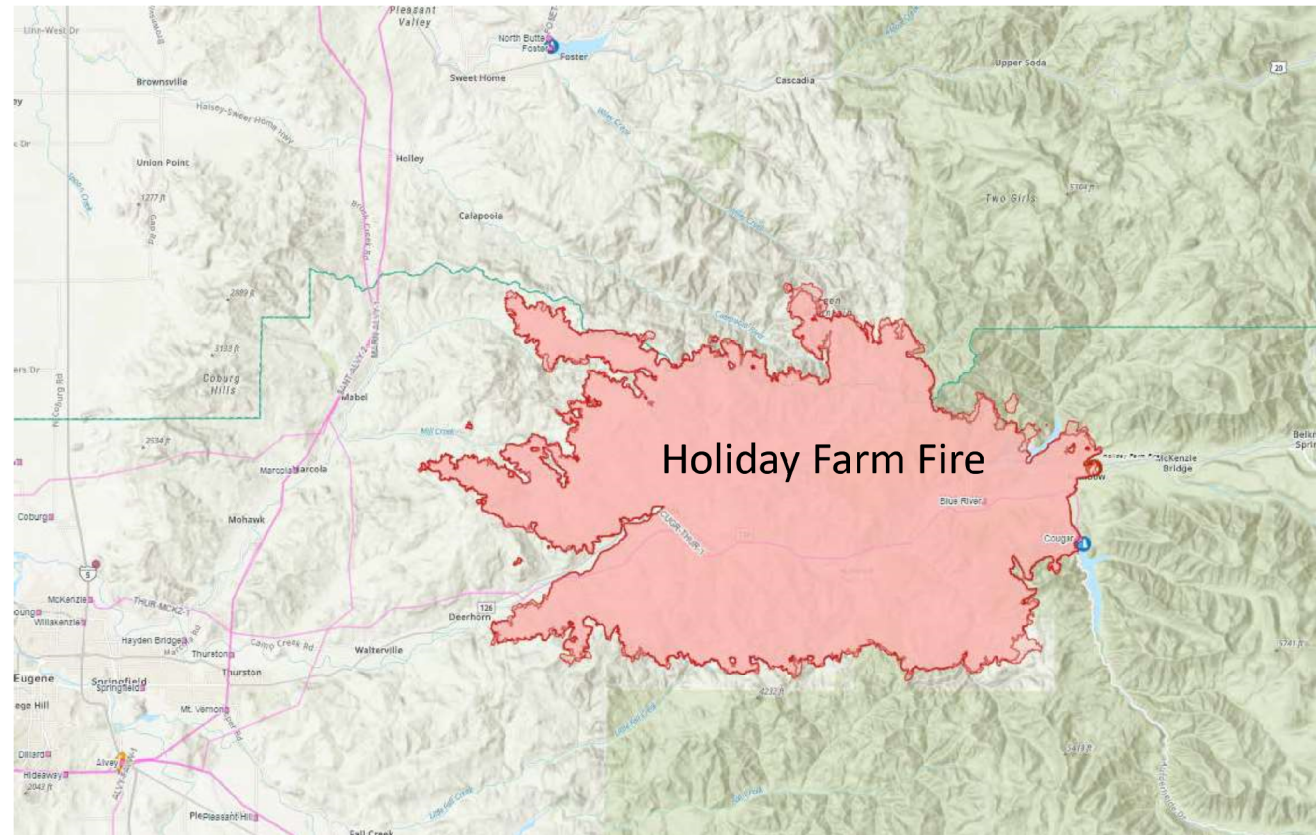


# BPA Situation Report

## BPA Oregon Fires

### Holiday Farm Fire

- Acres Burned:  
161,948+
- Counties Impacted:  
Lane
- Linn
- Substations
  - Cougar CUGR
  - Blue River BLRI
  - Marcola MRCL
  - Thurston THUR

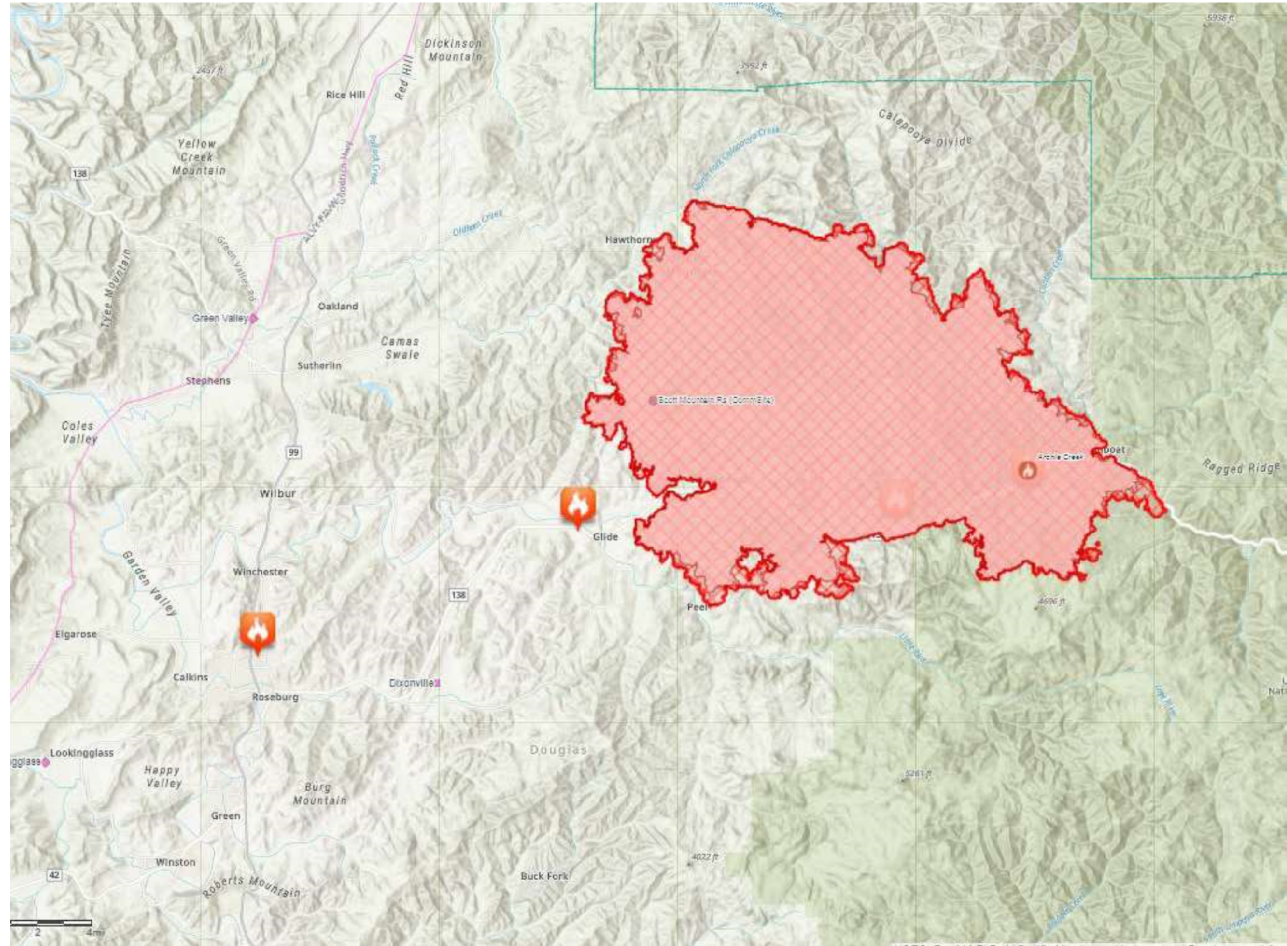


# BPA Situation Report

## BPA Oregon Fires

### Watching: Archie Creek Fire

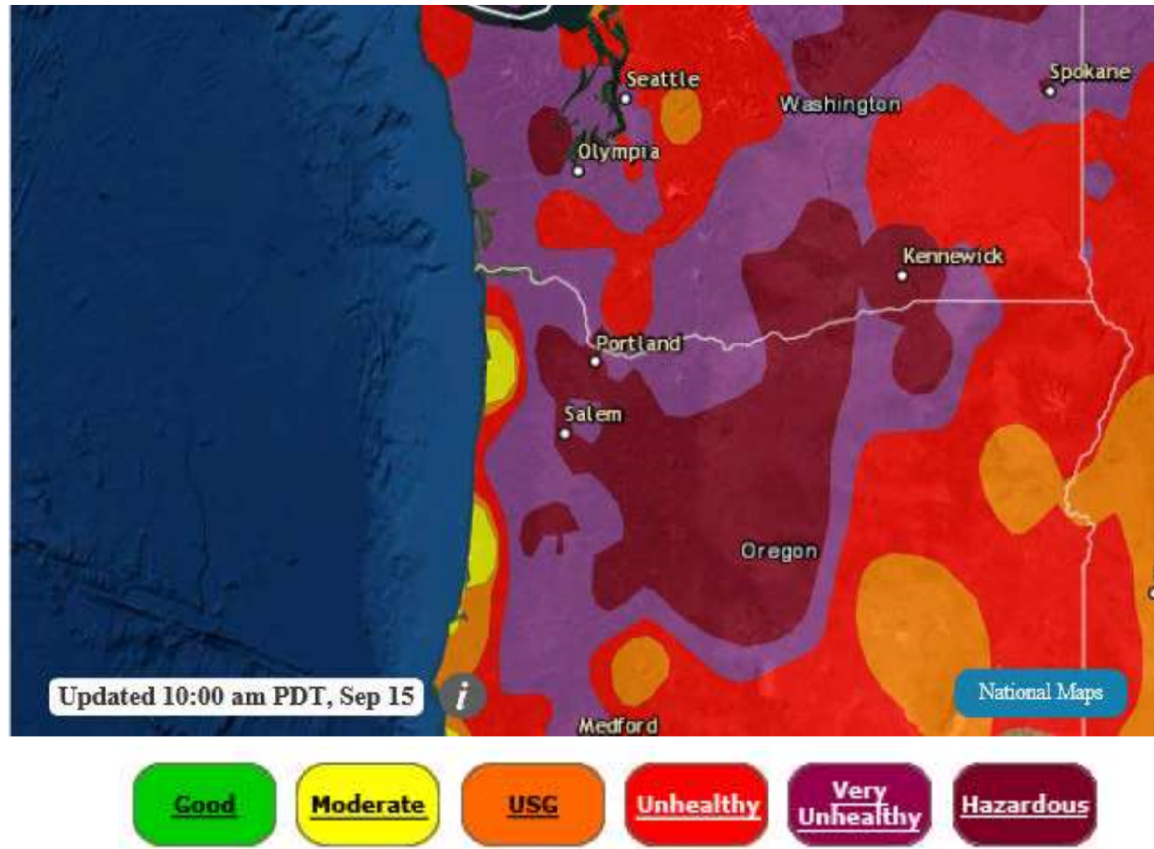
- Acres Burned: 121,475+
- Counties Impacted: Douglas
- Substations
  - Green Valley GRNV



# BPA Situation Report

## Service Territory Air Quality Report

[www.airnow.gov](http://www.airnow.gov)



# BPA Situation Report

## Oregon Evacuation Zones

Northern Oregon



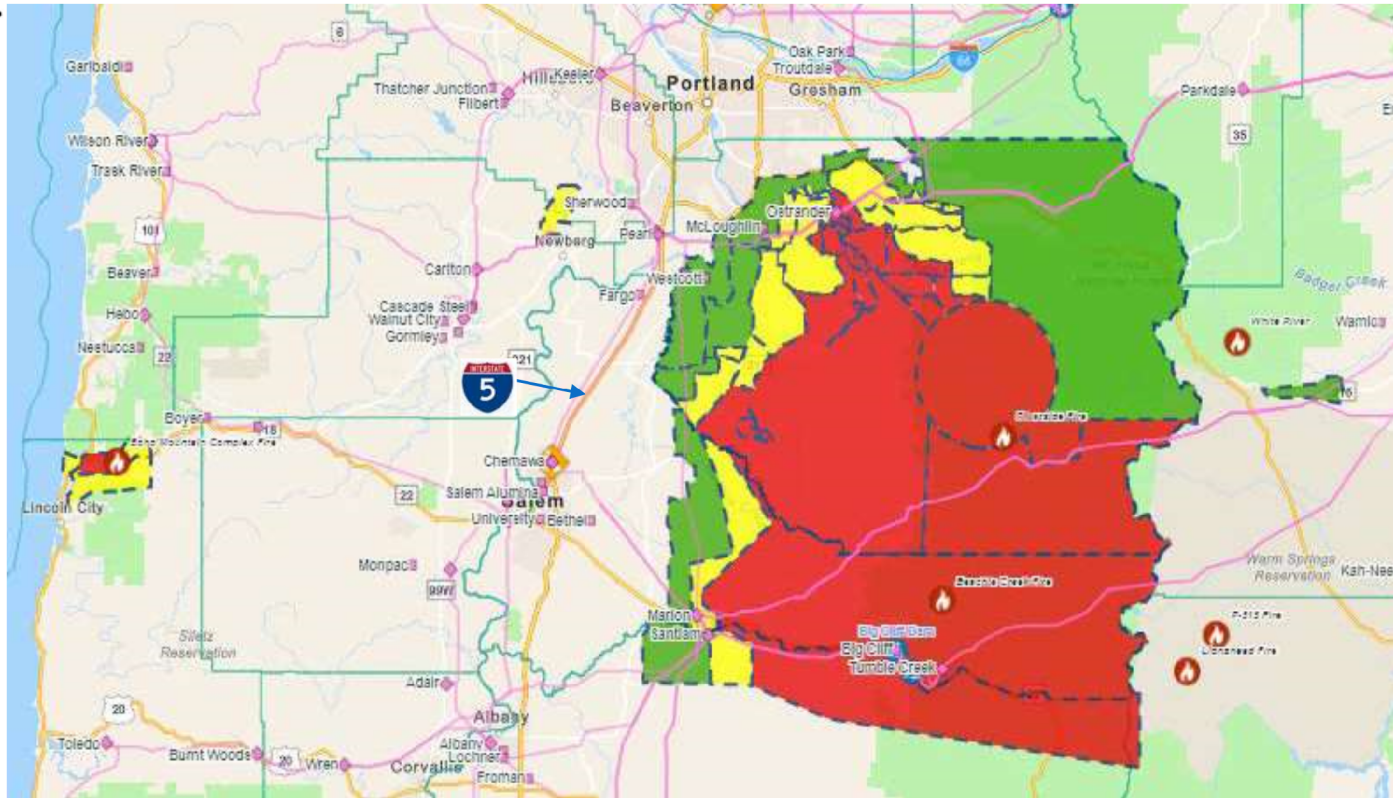
**Level 1: BE READY**



**Level 2: BE SET**



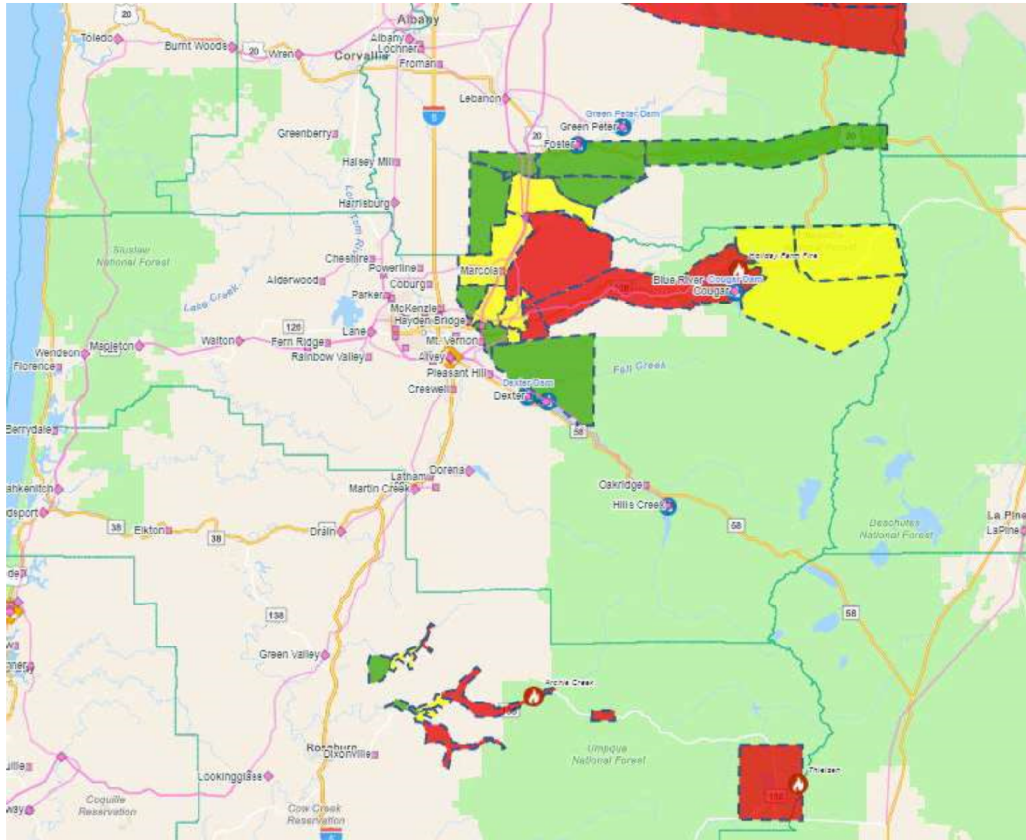
**Level 3: GO!**



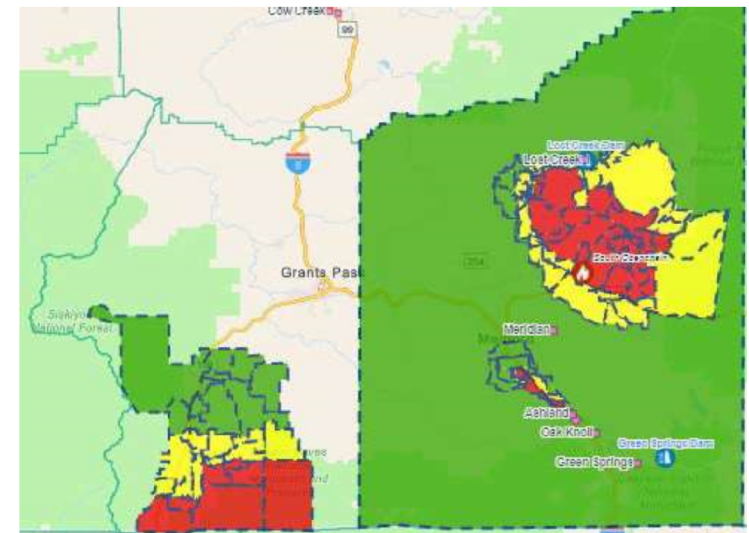
# BPA Situation Report

## Oregon Evacuation Zones

### Central Oregon



### Southern Oregon



-  **Level 1: BE READY**
-  **Level 2: BE SET**
-  **Level 3: GO!**

# BPA Situation Report

## Operations Section Chief Report

- Active fires still burning in the area
- 4 BPA lines or line sections currently OOS that we are responsible to restore.
- 2 BPA lines out for proximity work for fire damage restoration
- Access issues keeping crews from completing assessments or repairs:
  - A Section of Jones Canyon - Santiam 230kv
- Electrical customers still impacted by BPA restoration:
  - EWEB – ETR TBD – EWEB is not ready to take service
  - Lane Electric – ETR 9-17-20
- Fiber customers still affected by BPA restoration:
  - Noanet – partially restored – full restoration TBD
- Mutual Assistance
  - Continue to asses damage to BPA system to determine the need for or to provide mutual assistance
- Working with Operations and Planning to determine long range strategy

This document may contain SOC-Restricted Information. Under FERC Standards of Conduct, SOC-Restricted Information may not be shared with Marketing Function Employees (MFEs) unless certain criteria have been met (e.g., voluntary consent by the customer, a public OASIS posting, system emergencies, or other exceptions). Please take care to remove or otherwise redact the SOC-Restricted Information before forwarding or otherwise sharing with Marketing Function Employees.

# BPA Situation Report

## Dispatch Priorities

### Salem/Alvey

1. Jones Canyon-Tumble Creek section of Jones Canyon-Santiam #1 230kv line, (may not be able to access for patrols due to active fire)
2. Cougar-Holden Creek #1 115 line.

\*\* The fire threatening Marion substation remains the biggest concern\*\*

### Grand Coulee

1. Grand Coulee-Foster Creek #1 115kv line, (restore normal source to CHJ 500kv SS and investigate CHJ SS issues and Nespelem COOP normal source)
2. Grand Coulee-Chief Joseph #1 and #2 230kv lines
3. Goose Lake-Okanogan section of Grand Coulee-Okanogan #2 115kv line

Buckley remains on engine generators for Station Service power (SS is fed from Jones Canyon-Santiam #1 230kv line) . Fuel needs have been addressed



# BPA Situation Report

## POD Outages as of 08:00

- Cougar – Holden Creek (some TOP, some ours)
  - Forces out Cougar PH and **Carmen Smith generation (EWEB)**.
  - Blue River POD for **Lane Electric** is OOS on this line
- Nilles Corner- Chicken Creek Section Grand Coulee – Foster Creek No 1 115 kV line
  - Normal source to POD still out.
  - Nespelem POD Restored from Douglas. Customer restored.
  - Chief Joe SS other trouble.
- Jones Canyon – Santiam #1 230 KV line
  - Tumble Creek-Santiam section restored
  - Forces out Buckley Station Service
  - Wind Generation restricted to 50% name plate.
- Brewster – Foster Creek (TOP line for Okanogan, not a BPA line)
  - North Bar POD (Douglas Co.) OOS 0345 9/8 (not a BPA Customer)
  - Just listed here as they loop through our system
  - Still out. Eta unknown. 9/11 @ 1115 restored up to Foster Creek.

# BPA Situation Report

## South Region Activities

- **Salem:** *Santiam Fire*
  - **Jones Canyon-Tumble Creek section of Jones Canyon-Santiam#1 230kV:**
    - Active fires impeding patrol, reevaluating daily
  - **Marion Sub:**
    - Normal operations
    - Preventive fire watch on site
    - Daily evaluation with Santiam Fire IMT on risk to Marion
- **Eugene:** *Holiday Farm Fire*
  - **Cougar-Holden Creek #1 115kV:**
    - Cougar-Blue River Tap (6 miles)
      - TLM crews working with tree cutting crews to restore Cougar-Blue River Tap
      - Working with stakeholders to restore POD at Blue River Tap for Lane Electric on 9-17-20
      - Cougar-Blue River Tap (6 miles)
    - Blue River Tap – Holden Creek #1 (21 miles)
      - Started assessment to identify damage.
      - Assessment ETR 9/18

# BPA Situation Report

## North Region Activities

- **Grand Coulee**

- Making progress on the restoration activities on GCOU – CHJO #1 230kv
  - ETR – 9-17-20
- Completed restoration on the GCOU – FOST #1 115kv
  - Leaving OOS for proximity work
- Completed restoration on the GCOU – CHJO #2 230kv
  - Leaving OOS for proximity work
- Continue restoration on GCOU – OKAN #2 115kv
  - ETR – TBD
- Working with the customer on the final fiber break on the CHJO – SCLR
  - Customer fiber only - NOANET
  - ETR – 9-18-20

# BPA Situation Report

## Logistics & Planning

- **Logistics**
  - AMS continues to standby at Columbia and Midway sub pending final restoration of the fiber. ETR – 9-18-20
  - Cell Boosters approved and purchased
  - Material and equipment needs being met
  - Communication issues being mitigated
- **Planning**
  - Assessment of work priorities based on TOT load studies
  - Sequencing of crew days off to maintain rest day for all workers not to exceed 14 days
  - IMT hours tracking
  - Contingency plans for resources

# BPA Situation Report

## Media Analysis Cont.

### No new news on fires from a utility perspective.

### MEDIA INQUIRIES AND RESPONSES

- Extension of Air Quality building closure message through Thursday, Sept. 17
- BPA Connection/BPA.gov story summarizing work to date and wildfire impact being drafted
- **Wall Street Journal**
  - PIO conducted an interview with WSJ reporter Rebecca Smith on 9/14/20. Most of our conversation revolved around the outage report available through BPA.gov on the Transmission section of the website and two outages listed below.
  - Ms. Smith's focus was mostly on two BPA lines listed on the report: The on the Sept. 8 Slatt to Ashe Marion 500 kV 500 kV line outage and the Sept. 7 Santiam: 69 kV CPI Feeder Line #1 outage. PIO explained the circumstances surrounding both outages and provided general information about BPA's wildfire response consistent with the approved statement and talking points. We worked with Dispatch personnel assigned to the IMT to provide details about the Slatt to Ashe – Marion 500 kV line. We confirmed that BPA does not own the 69 kV CPI Feeder Line #1.
- **Salem Statesman Journal**
  - PIO spoke with Statesman Journal reporter Claire Withycombe, who asked if BPA has voluntarily removed any of its lines out of service in the Santiam Canyon area last week. We responded BPA did not. We also provided Withycombe John Hairston's statement and told her at this time we have no evidence that any BPA equipment was associated with ignition of any of the wildfires burning in the area.
  - *As the fires recede and become more contained, PIO expects the media to start to focus on the origins the fires and potential power line involvement in ignition or spread. If you receive a call from the media, please refer that call to [pio@bpa.gov](mailto:pio@bpa.gov). If it is after hours, call Doug Johnson at 503-713-7658*

# BPA Situation Report


## Additional Report Outs


- Liaison Officer (Inter. Gov. Affairs) – Dan James
- Liaison Officer - Marybeth O’Leary
- Customer Liaison – Tina Ko

# Recommendations

- Extension of Air Quality advisory through Friday, adding info for All BPA
- Accountability Process: continue through this week, then end this requirement

## Please Standby as we move into our COVID Situation Brief


 PUBLIC HEALTH DIVISION



### Know the difference between symptoms of smoke exposure and COVID-19


**Symptoms that can be caused by both wildfire smoke and COVID-19:**

- Cough, difficulty breathing, runny nose, headache, and fatigue



**Symptoms not related to wildfire smoke exposure:**

- Fever, chills, muscle and body aches, vomiting, diarrhea, and loss of taste or smell



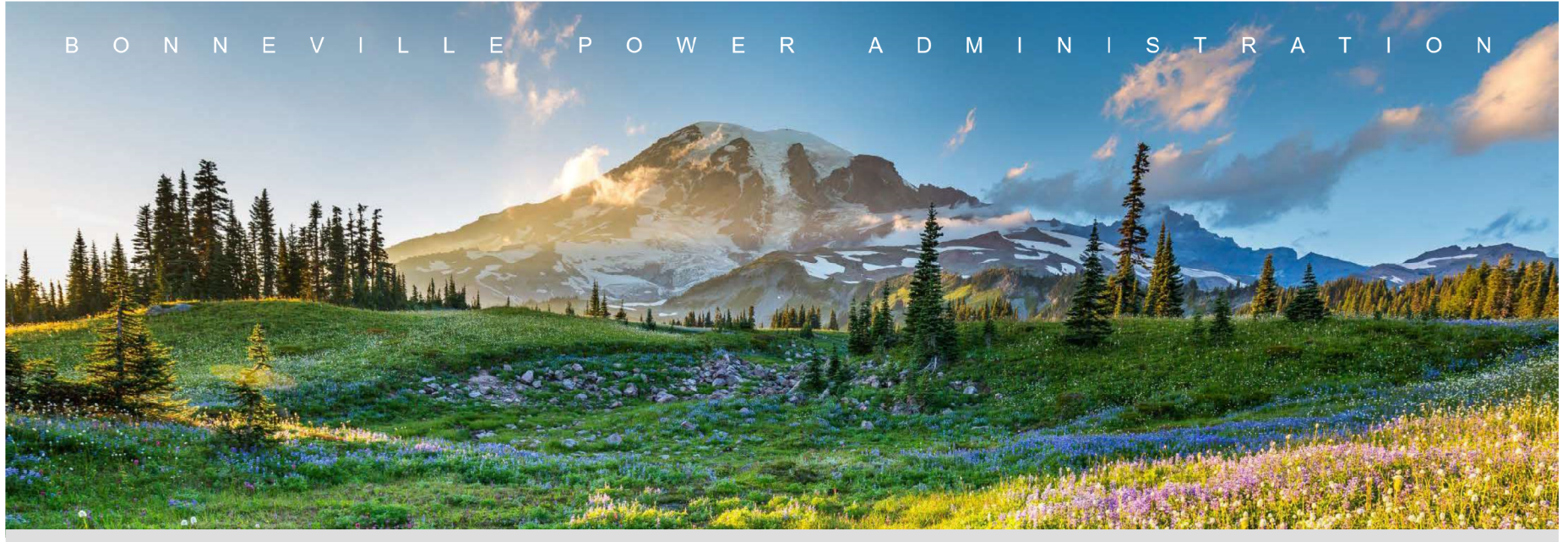
If you have any of these symptoms, the Centers for Disease Control (CDC) [COVID-19 Self-Checker](#) can help you determine whether you need to contact a health care provider.

If you have [severe symptoms](#), like difficulty breathing or chest pain, immediately call 911 or the nearest emergency facility.

**Document accessibility:** For individuals with disabilities or individuals who speak a language other than English, OHA can provide information in alternate formats such as translations, large print, or braille. Contact Mavel Morales at 1-844-882-7889, 711 TTY or [OHA.ADAModifications@dhsosha.state.or.us](mailto:OHA.ADAModifications@dhsosha.state.or.us).

OHA 3277 (9/14/2020) 1





# BPA Situation Brief

September 15, 2020



# BPA COVID-19 Case Report 9/15

- Currently Tracking **8** Active Reports
  - Primary Exposures: **4**
  - Symptomatic: **2**
  - Tested Positive: **2**

# BPA Situation Report

## BPA

### BRING THE WORKFORCE BACK DASHBOARD

28-Day View

STATE	Influenza-like Illnesses (ILI)	COVID-like Syndromic Cases (CLI)	COVID-19 Confirmed Cases		Positive COVID-19 Tests	
CLICK BELOW TO SEE SOURCE DATA						
IDAHO	-0.2 <small>PERCENTAGE CHANGE IN ER VISITS OVER 28 DAYS</small>	-1.50 <small>PERCENTAGE CHANGE IN ER VISITS OVER 28 DAYS</small>	-1 <small>28-DAY ROLLING AVG - CHANGE IN DAILY CASES</small>	271 <small>28-DAY ROLLING AVG - DAILY NEW CASES</small>	0.01% <small>28-DAY ROLLING AVG - CHANGE IN % POSITIVE</small>	12.6% <small>28-DAY ROLLING AVG - TOTAL % POSITIVE</small>
MONTANA	-0.2 <small>PERCENTAGE CHANGE IN ER VISITS OVER 28 DAYS</small>	-1.50 <small>PERCENTAGE CHANGE IN ER VISITS OVER 28 DAYS</small>	2 <small>28-DAY ROLLING AVG - CHANGE IN DAILY CASES</small>	118 <small>28-DAY ROLLING AVG - DAILY NEW CASES</small>	0.01% <small>28-DAY ROLLING AVG - CHANGE IN % POSITIVE</small>	3.0% <small>28-DAY ROLLING AVG - TOTAL % POSITIVE</small>
OREGON	-0.2 <small>PERCENTAGE CHANGE IN ER VISITS OVER 28 DAYS</small>	-1.50 <small>PERCENTAGE CHANGE IN ER VISITS OVER 28 DAYS</small>	-7 <small>28-DAY ROLLING AVG - CHANGE IN DAILY CASES</small>	210 <small>28-DAY ROLLING AVG - DAILY NEW CASES</small>	0.00% <small>28-DAY ROLLING AVG - CHANGE IN % POSITIVE</small>	4.8% <small>28-DAY ROLLING AVG - TOTAL % POSITIVE</small>
WASHINGTON	-0.2 <small>PERCENTAGE CHANGE IN ER VISITS OVER 28 DAYS</small>	-1.50 <small>PERCENTAGE CHANGE IN ER VISITS OVER 28 DAYS</small>	2 <small>28-DAY ROLLING AVG - CHANGE IN DAILY CASES</small>	443 <small>28-DAY ROLLING AVG - DAILY NEW CASES</small>	-0.0... <small>28-DAY ROLLING AVG - CHANGE IN % POSITIVE</small>	5.1% <small>28-DAY ROLLING AVG - TOTAL % POSITIVE</small>
MEASUREMENT	<small>GREEN</small> TWO-WEEK DECREASE <small>YELLOW</small> ONE-WEEK DECREASE <small>RED</small> INCREASE FROM PREVIOUS WEEK	<small>GREEN</small> TWO-WEEK DECREASE <small>YELLOW</small> ONE-WEEK DECREASE <small>RED</small> INCREASE FROM PREVIOUS WEEK	<small>GREEN</small> NEGATIVE <small>YELLOW</small> EVEN <small>RED</small> POSITIVE	<small>GREEN</small> NEGATIVE TRAJECTORY <small>YELLOW</small> WEAK/PLATEAU <small>RED</small> POSITIVE TRAJECTORY	<small>GREEN</small> NEGATIVE <small>YELLOW</small> EVEN <small>RED</small> POSITIVE	<small>GREEN</small> NEGATIVE TRAJECTORY <small>YELLOW</small> WEAK/PLATEAU <small>RED</small> POSITIVE TRAJECTORY

# BPA Situation Report

## Pacific Northwest

### COVID-19 Epidemiological Curves

Data valid as of:  
9/14/2020

State

All

County, State

All

District

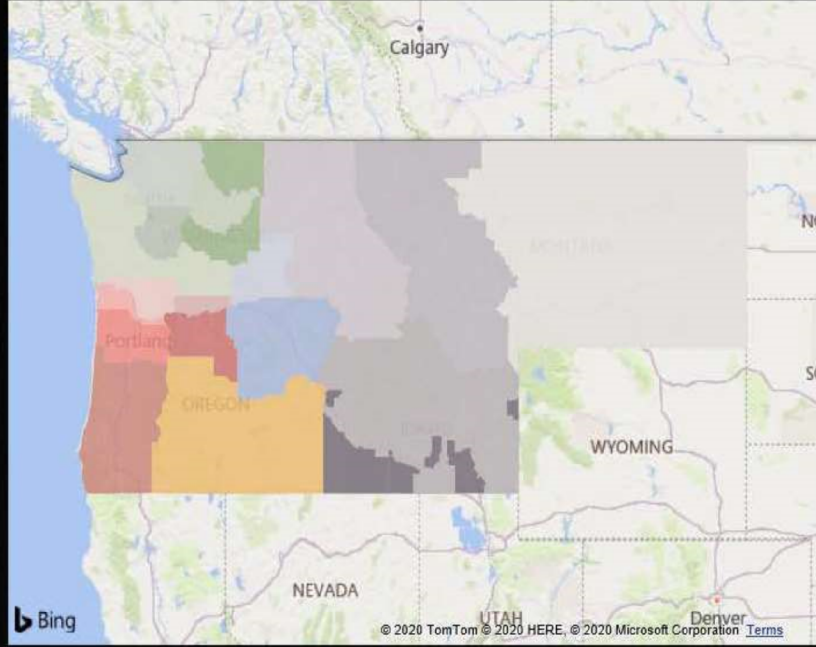
All

BACK



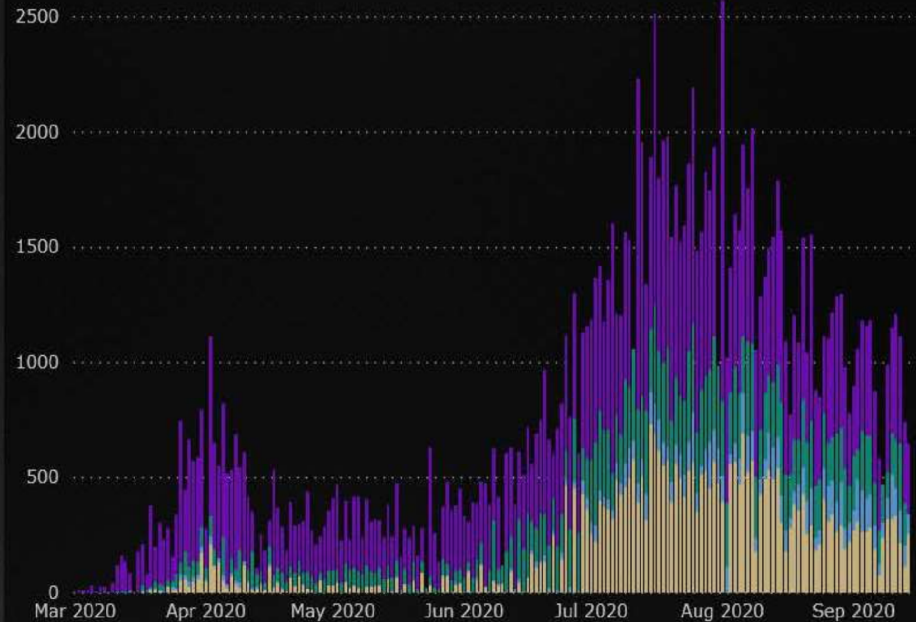
#### Districts by State

● (Blank) ● Covingt... ● Eugene ● Idaho F... ● Kalispell ● Longview ● Olympia ● Redmond



#### Confirmed COVID-19 Cases by Day & County

State ● Idaho ● Montana ● Oregon ● Washington



154,114	147,789	6,325	140,850	13,264	124,901	29,213	103,984	50,130
Current Cases	Total Cases (7 days ago)	7-day Change	Total Cases (14 days ago)	14-day Change	Total Cases (28 days ago)	28-day Change	Total Cases (42 days ago)	42-day Change

# BPA Situation Report

## Pacific Northwest

COVID-19 Case Data by State:  
28-day View

14-DAY

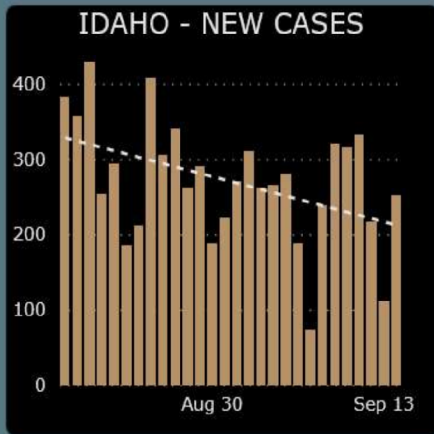
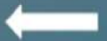
28-DAY

42-DAY

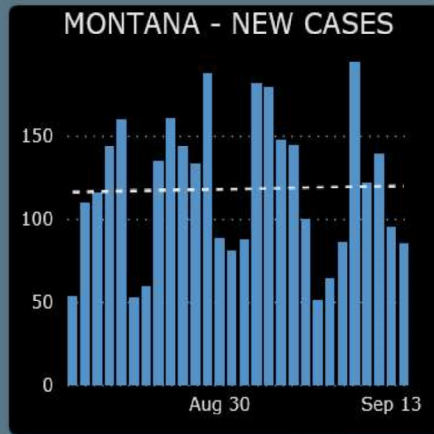
9/14/2020

Date Last Updated

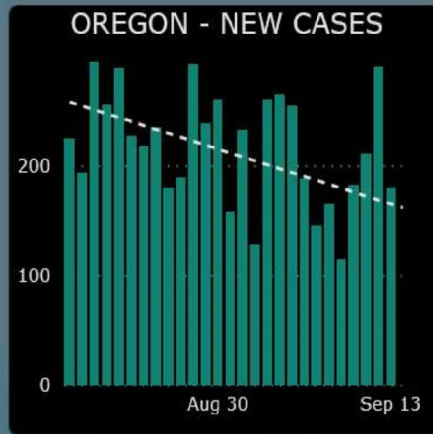
BACK



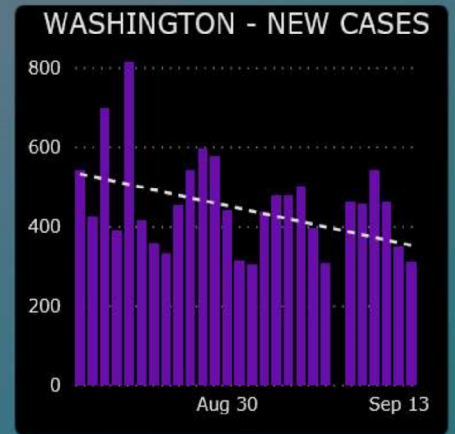
Average Cases	Correlation of Cases
271	-0.44



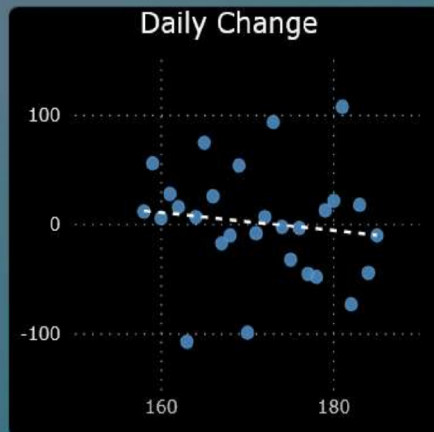
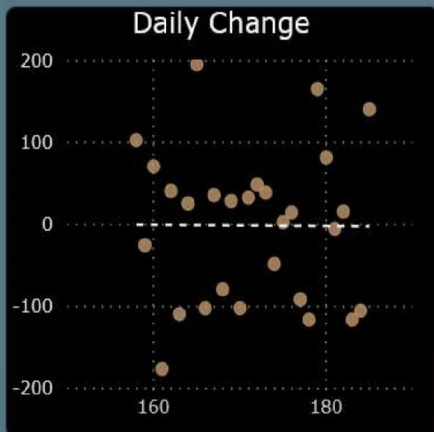
Average Cases	Correlation of Cases
118	0.0



Average Cases	Correlation of Cases
210	-0.5



Average Cases	Correlation of Cases
443	-0.4



# BPA Situation Report

## Pacific Northwest

COVID-19 Test Data by State:  
28-day View

14-DAY

28-DAY

42-DAY

9/14/2020

Date Last Updated

BACK

