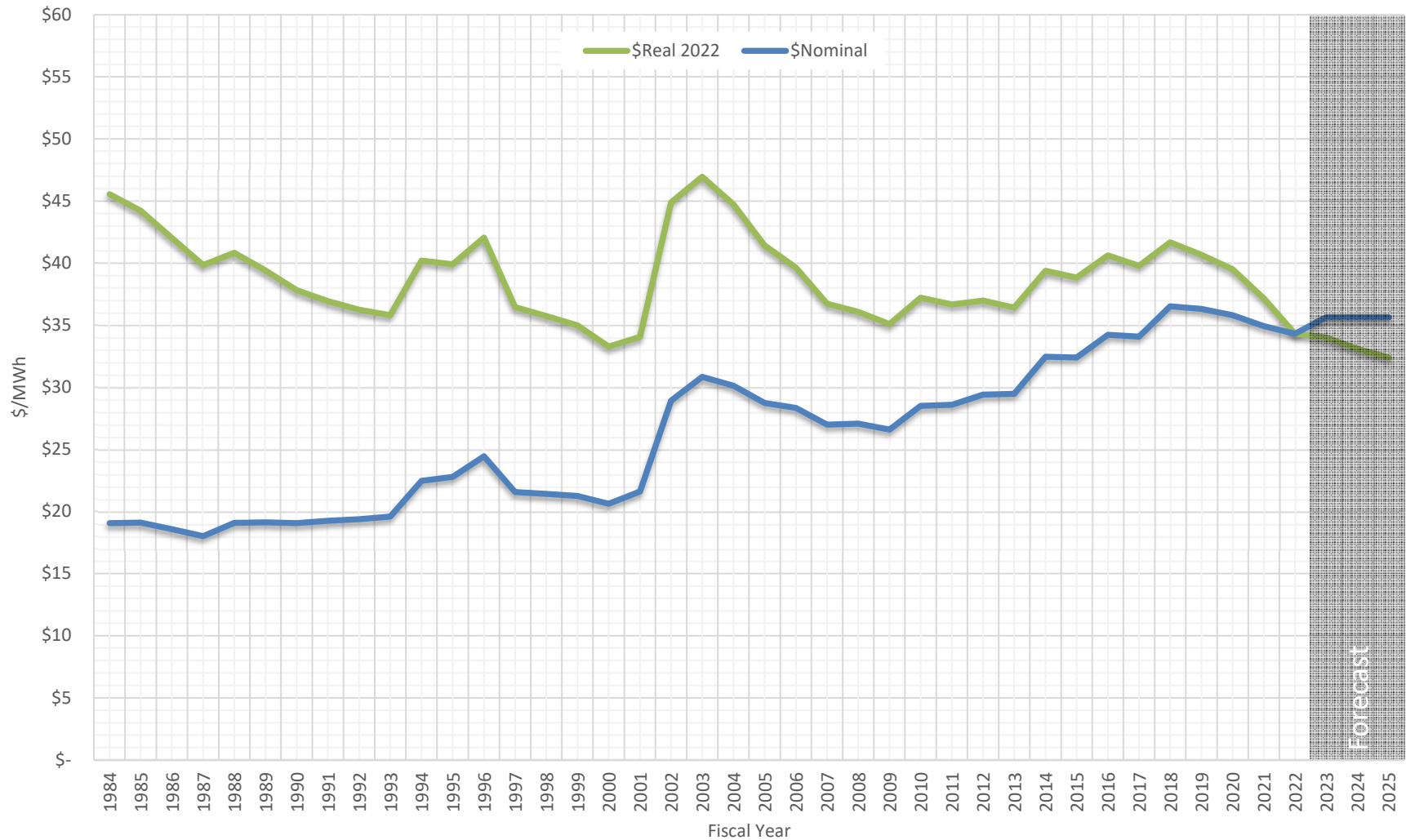


Historical Priority Firm Power Rates - No Transmission FY 1984-2025



(1) Deflators are calculated using BEA's Chained GDP Price-Index (2) Priority Firm power rates are based on **Tier 1** power sold to **Non-Slice PF Public** loads (3) **2023-2025** rates are **forecast** (4) **1984-2022** rates are **actuals** (5) Actuals do not reflect refunds of overcharges due to the REP Settlement Agreement (6) **2022 actuals does include** the 2022 Reserves Distribution Clause (RDC) (7) **2023 forecast does not** include the 2023 RDC.