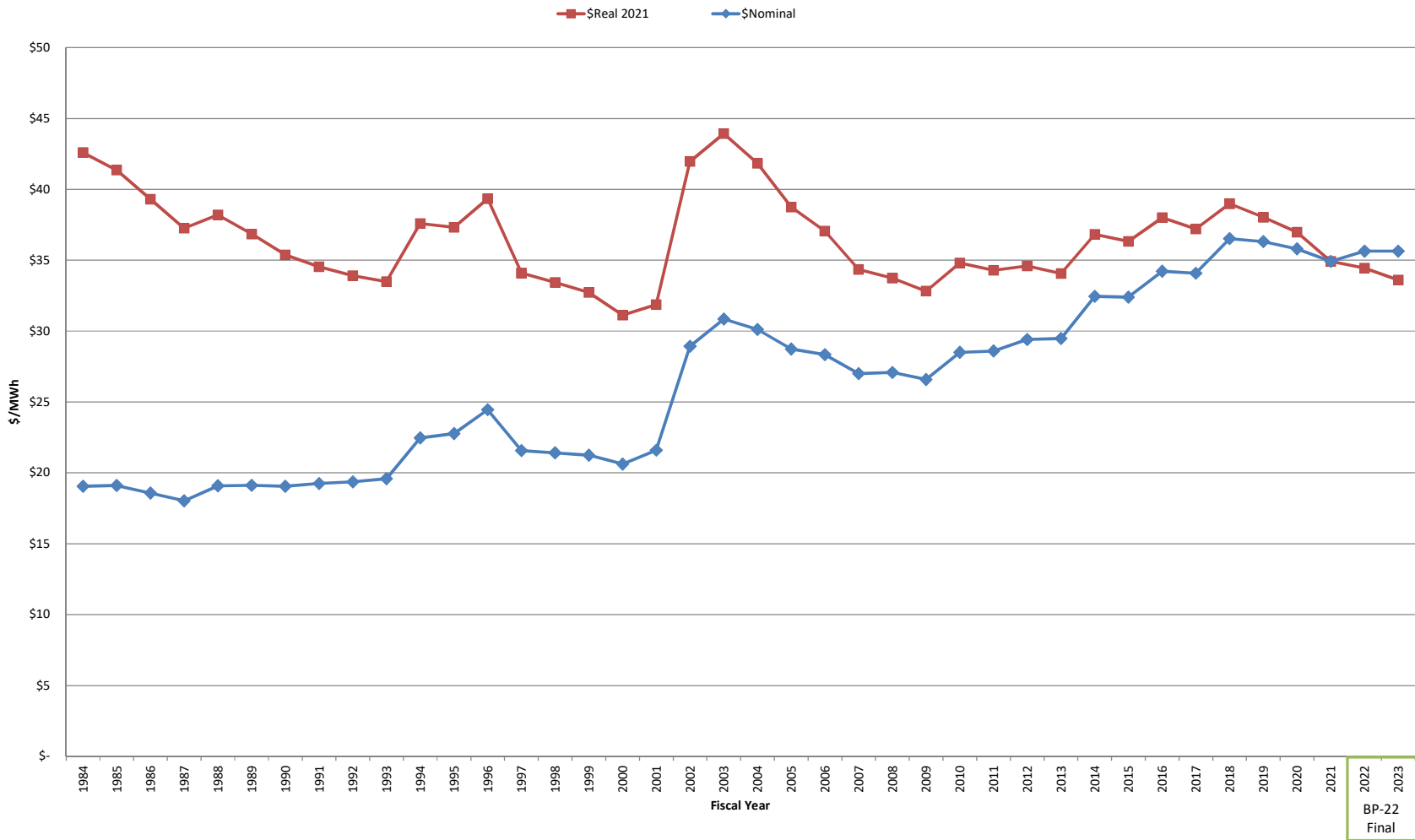


## Historical Priority Firm Power Rates - No Transmission FY 1984-2023



(1) Deflators for 1984-2023 are from table 9 of the "BPA interest rate and inflation forecast for the period FY 2020 through 2049" published in the BP-22 Final Proposal. (2) 2022 and 2023 PF Power Rates are BP-22 Final Proposal effective rates for Tier 1 power sold to Non-Slice PF Public loads. (3) 1984-2021 PF Power Rates are based on actual sales. (4) 1997-2021 Mid-C prices are actual ICE day-ahead flat average prices at Mid-C. 2022 and 2023 prices are forecast average Mid-C prices from the BP-22 Final Proposal.