
BPA FACTS

The information contained in
BPA Facts is for fiscal year 2016,
unless otherwise noted.



BPA PRIORITIES

BPA achieved its mission and improved operational excellence by focusing on the following five priorities:



**OUR
PEOPLE**

We provide a safe, positive and inclusive work environment that attracts and retains a diverse, highly skilled workforce with a deeply embedded commitment to delivering regional value and customer service.



**PHYSICAL
ASSETS**

We execute sustainable and affordable investment strategies to maintain and modernize clean and renewable power and transmission system infrastructure.



**SUSTAINABLE
FINANCES &
RATES**

We ensure long-term financial strength by balancing reliability, low rates, cost-effective access to capital, responsible cost management and our other public purpose objectives.



**RELIABLE,
EFFICIENT
& FLEXIBLE
OPERATIONS**

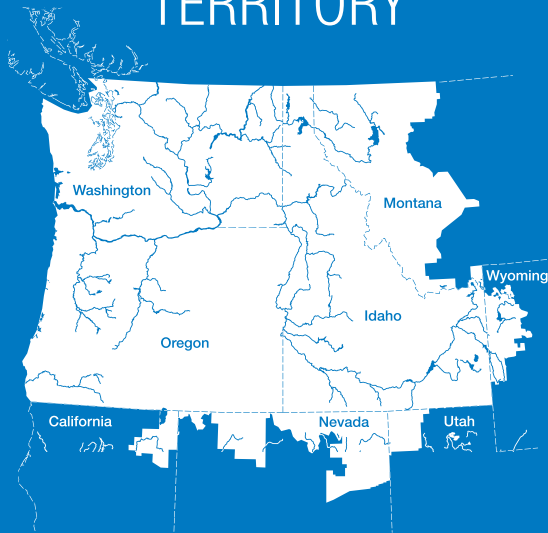
We reliably operate the power and transmission assets and other business operations through highly efficient and effective systems and processes. We enhance our flexibility and interoperability to adapt to changes in supply mix and market design.



**THE NATURAL
ENVIRONMENT**

We protect and enhance the environment, fish and wildlife with a focus on good science, fiscal efficiency and on-the-ground results.

300K
SQ. MILES
OF SERVICE
TERRITORY



General Information

| | |
|-----------------------------------|---------------------|
| BPA established | 1937 |
| Service area size (square miles) | 300,000 |
| Pacific Northwest population | 13,505,582 |
| Transmission line (circuit miles) | 15,238 |
| BPA substations | 260 |
| Employees (FTE) | 3,100 ^{1/} |

1/ FTE for fiscal year 2017 from the FY 2017 Congressional Budget.

Customers

| | |
|--|-----|
| Cooperatives | 54 |
| Municipalities | 42 |
| Public utility districts | 28 |
| Federal agencies | 7 |
| Investor-owned utilities | 6 |
| Direct-service industries | 2 |
| Port districts | 1 |
| Tribal utilities | 2 |
| Total | 142 |
| Marketers (power and transmission) ^{2/} | 218 |
| Transmission customers | 511 |

2/ As of February 2017.

Wholesale power rates^{3/}

(fiscal years 2016–2017)

Priority Firm Tier 1 3.38 cents/kWh
(average^{4/}, undelivered)

Priority Firm Avg. Tier 1 + Tier 2 . . 3.51 cents/kWh
(undelivered)

Priority Firm Exchange 5.87 cents/kWh
(average, undelivered)

Industrial Firm 4.19 cents/kWh
(average, undelivered)

New Resources 7.38 cents/kWh
(average, undelivered)

3/ The rates shown do not include the cost of transmission. They also do not include the application of the conservation rate credit.

4/ The actual rate paid by an individual customer will vary according to the shape of the load and the products and services purchased.

Transmission rates^{5/}

(fiscal years 2016–2017)

Network rates

Long-Term Firm \$1.489/kW/mo

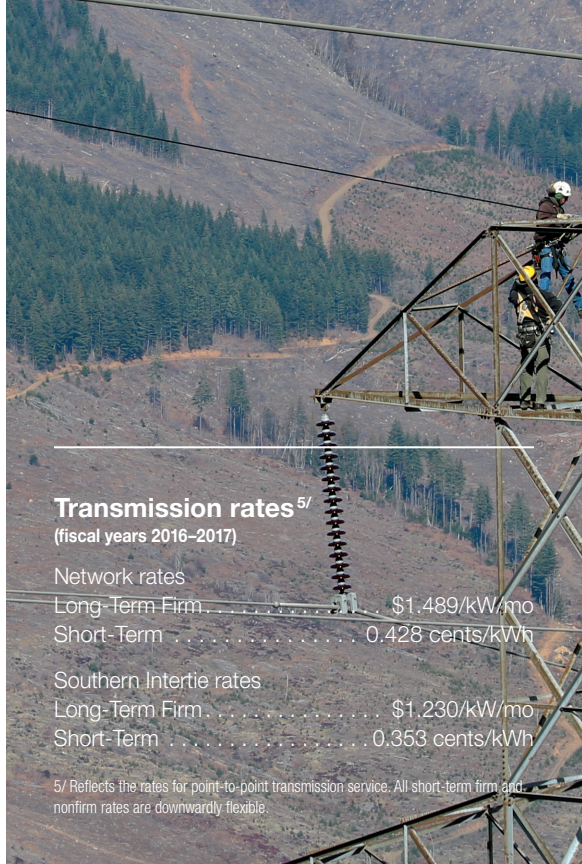
Short-Term 0.428 cents/kWh

Southern Intertie rates

Long-Term Firm \$1,230/kW/mo

Short-Term 0.353 cents/kWh

5/ Reflects the rates for point-to-point transmission service. All short-term firm and nonfirm rates are downwardly flexible.



U.S. Treasury payment
\$1.9 billion

While this year saw a return to near-normal hydrological conditions, lingering effects of the 2015 dry year along with persistently low natural gas prices and lower customer loads were the primary contributors to BPA's lower-than-expected adjusted net revenues.

2016 Financial Highlights*

For the Federal Columbia River Power System

(\$ in millions)

| | |
|--|-----------------|
| Total operating revenues ^{6/} | \$3,432.6 |
| Total operating expenses | <u>2,857.3</u> |
| Net operating revenues | 575.3 |
| Net interest expense | <u>298.1</u> |
| Net revenues | <u>\$ 277.2</u> |

6/ Includes both power and transmission revenues.

*This information is consistent with BPA's 2016 Annual Report.

Sources of revenue^{7/} (\$ in thousands)

| | |
|-----------------------------|-------------|
| Publicly owned utilities | \$2,070,017 |
| Wheeling and other sales | \$903,208 |
| Sales outside the Northwest | \$237,628 |
| U.S. Treasury credits | \$77,228 |
| Direct-service industries | \$18,660 |
| Investor-owned utilities | \$76,060 |
| Miscellaneous revenues | \$71,912 |

Disposition of revenue^{7/} (\$ in thousands)

| | |
|-------------------------------|-------------|
| Operations and maintenance | \$2,025,304 |
| Federal projects depreciation | \$471,118 |
| Net interest expense | \$289,169 |
| Nonfederal projects | \$249,246 |
| Purchased power | \$133,714 |

7/ Does not reflect bookouts of -\$22,064.

15K+
CIRCUIT
MILES



846 MILES

Transmission System

| Operating voltage | Circuit miles |
|---------------------|-------------------|
| 1,100 kV | 1 |
| 1,000 kV | 264 ^{8/} |
| 500 kV | 4,869 |
| 345 kV | 570 |
| 287 kV | 229 |
| 230 kV | 5,238 |
| 161 kV | 119 |
| 138 kV | 56 |
| 115 kV | 3,520 |
| below 115 kV | 282 |
| Total ^{9/} | 15,238 |

8/ BPA's portion of the PNW/PSW direct-current intertie. The total length of this line from The Dalles, Ore., to Los Angeles is 846 miles.

9/ Total circuit miles as of Feb. 2, 2017.

total generation
9,000⁺ aMW

31 FEDERAL DAMS

U.S. Army Corps of Engineers



Bureau of Reclamation



Federal Hydro Projects

31 federal dams (max. capacity) 22,458 MW

Projects owned and operated by:

U.S. Army Corps of Engineers (**14,651 MW**) 21 dams

Bureau of Reclamation (**7,807 MW**) 10 dams

Federal Generation

Hydro generation. 7,919 aMW

Total generation. 9,089 aMW

60-min. hydro peak generation 13,599 MW

60-min. total peak generation 14,840 MW

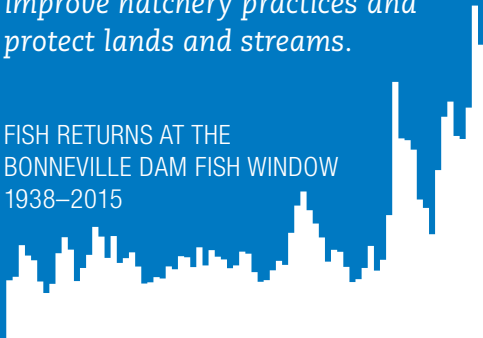
All-time 60-min. total peak
generation record (June 2002). 18,139 MW

**HYDRO
POWER
FLOWS HERE**

WWW.BPA.GOV/HYDROFLOWSHERE

Each year, BPA invests hundreds of millions of dollars to make dams safer for fish. We partner with states and tribes, conservation agencies and others to restore damaged habitat, improve hatchery practices and protect lands and streams.

FISH RETURNS AT THE
BONNEVILLE DAM FISH WINDOW
1938–2015

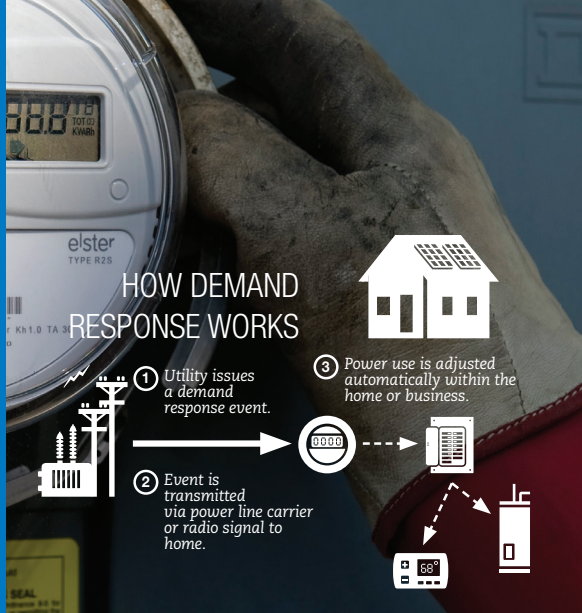


Fish and Wildlife (\$ in millions)

Total F&W costs for FY 2016^{10/} \$621.5

BPA has committed nearly \$15.9 billion since 1978 to support Northwest fish and wildlife recovery.

10/ Program expenses include integrated program and action plan/high priority.



Energy Efficiency

In FY 2015, based on preliminary figures, BPA acquired more than 138 average megawatts of new energy efficiency savings. That brings the cumulative total savings to 2,153 aMW since 1982.

VISION

BPA will be an engine of the Northwest's economic prosperity and environmental sustainability.

BPA's actions advance a Northwest power system that is a national leader in providing:

- High reliability;
- Low rates consistent with sound business principles;
- Responsible environmental stewardship; and
- Accountability to the region.

We deliver on these public responsibilities through a commercially successful business.