

factsheet

October 2008

Proposed McNary-John Day Transmission Line Project

In 2002, the Bonneville Power Administration decided to build a new 79-mile high-voltage transmission line. The line would have provided additional transmission capacity on BPA's West-of-McNary transmission path. However, the project was put on hold due to uncertainties about the viability of proposed generation projects that had planned to use the line.

BPA recently received many new requests for transmission service that may lead BPA to decide to take the project off hold and build it soon. In the next few months, we will be considering whether to move forward with the project.

Background

BPA completed an environmental impact statement in 2002 that analyzed the potential impacts of constructing, maintaining and operating a new 79-mile, 500-kV McNary-John Day transmission line. The line route starts at BPA's McNary Substation in Umatilla, Ore., and crosses the Columbia River just north of the substation into Washington. The route then proceeds west for about 70 miles along the Columbia River through Benton and Klickitat counties, Wash., The route again crosses the Columbia River into Oregon at the John Day Dam and then terminates at BPA's John Day Substation in Sherman County.

BPA proposed the project to address the increased need for transmission capacity between McNary Substation and John Day Substation for expected generation in southeast Washington and northeast Oregon.

At the time of the EIS, construction of a number of gas-fired and wind-powered generation facilities were planned in the area. But, in October 2002, many of

these facilities were put on hold due to market conditions and the need to secure financing.

BPA signed a record of decision at that time stating the line would be built once funding was available. BPA proceeded with a few preliminary construction activities, such as purchasing easements in a few specific sections of the line and constructing the transmission tower pads at the Columbia River crossing.

Next steps

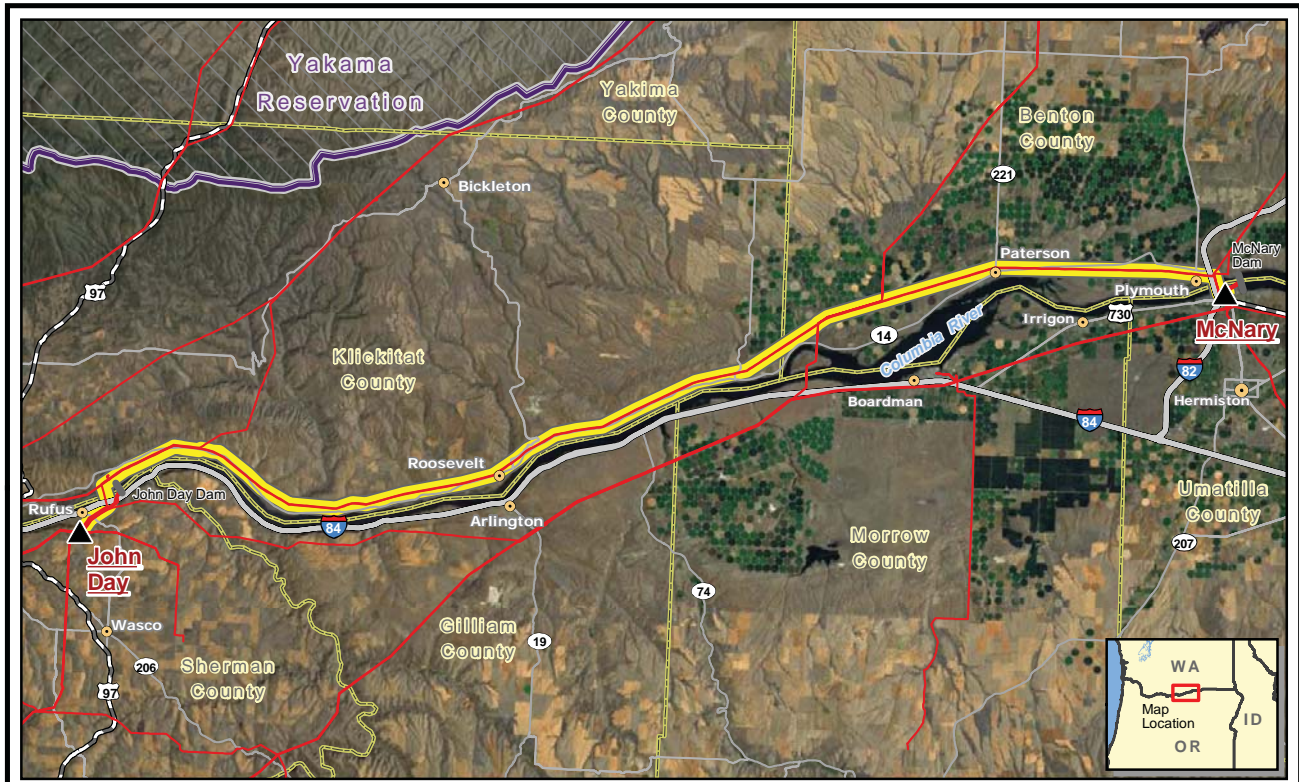
BPA will begin public outreach this month to re-engage with property owners and interested parties about the McNary-John Day Transmission Line Project. BPA also will prepare a supplement analysis to review our 2002 EIS and determine whether this EIS remains valid, or whether there are significant new circumstances or information relevant to environmental impacts that would require the preparation of further NEPA documentation. We expect to complete the supplement analysis for the project by February 2009. We also expect to complete an analysis of the financial viability of the project by this time.

If the financial analysis determines that this project is worth pursuing and the supplement analysis finds that no further NEPA documentation is required, BPA likely will proceed with the project construction in summer 2009, with an estimated completion date of 2012.

For more information

If you would like more information or have questions about the project, you may contact BPA toll free by calling (800)622-4519 or by sending an e-mail to comment@bpa.gov. Thank you for your interest in the project.





McNary-John Day Transmission Line Project

- Legend**
- Project Route
 - Indian Reservation Boundary
 - Existing BPA Transmission Lines
 - County Boundary
 - BPA Substation

