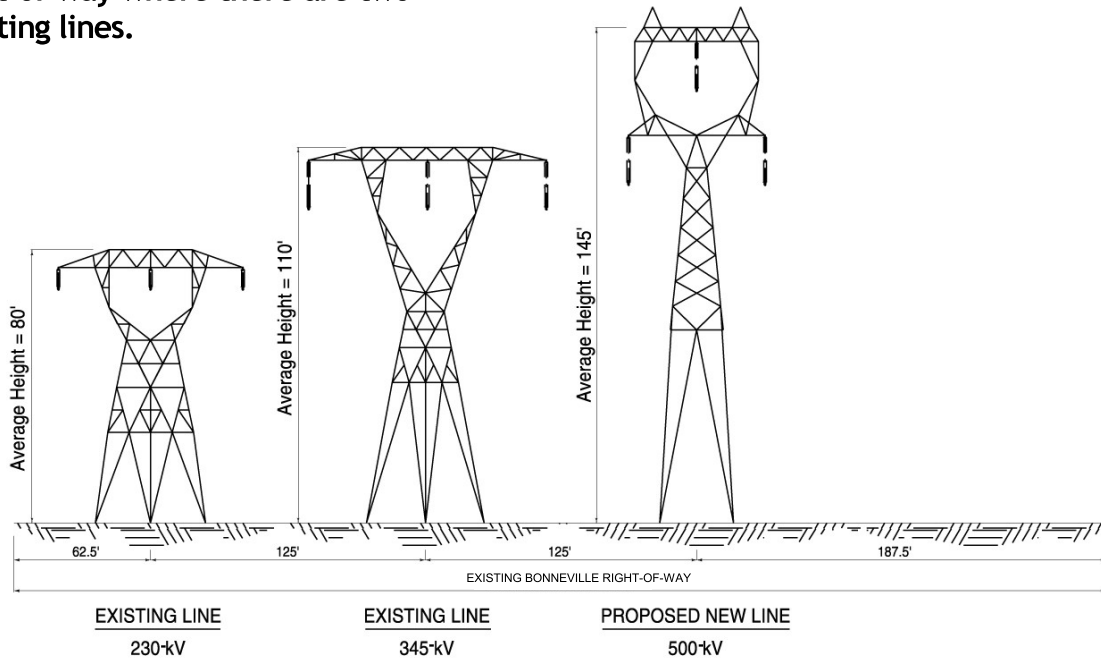
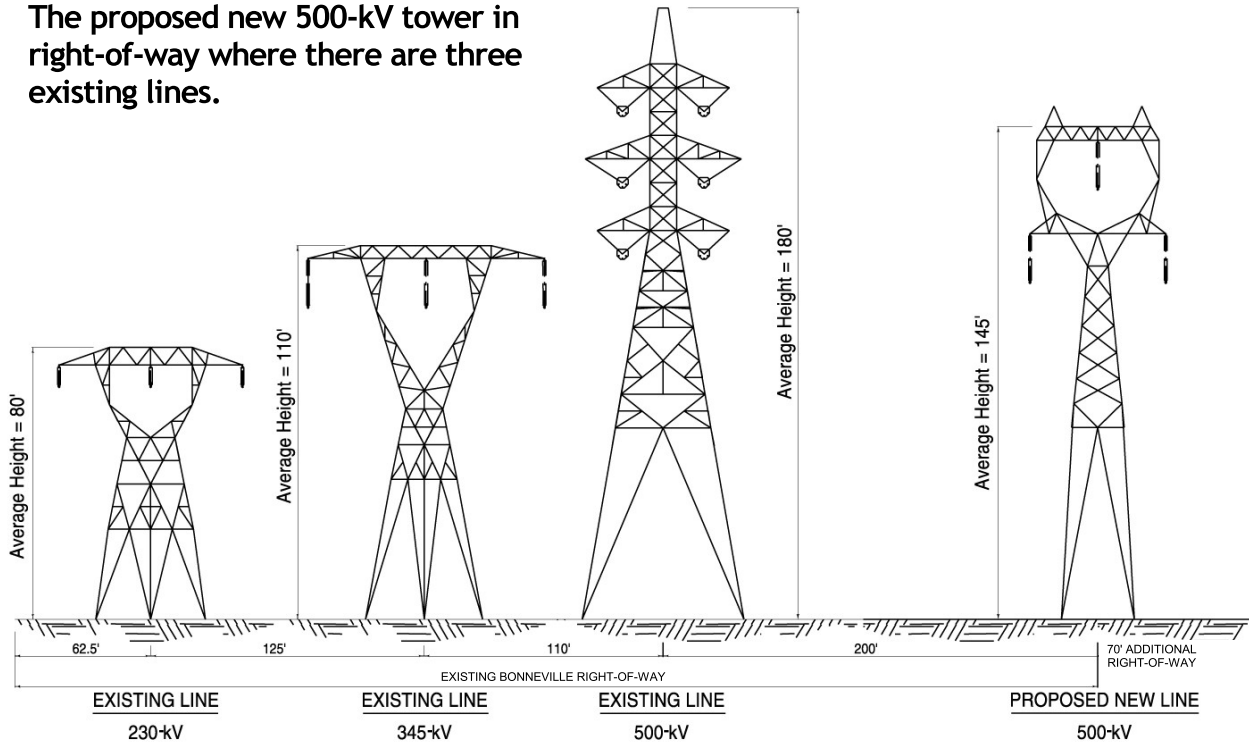


The proposed new 500-kV tower in right-of-way where there are two existing lines.



The proposed new 500-kV tower in right-of-way where there are three existing lines.



D:\GIS_Projects\BPA-JohnDay\McNary\Projects\DEIS_Report\Projects\Graphics_1_09_SRs.apr (2/13/2002)

Source: Bonneville Power Administration, 2001.

Figure 2-2
Tower Configurations in Right-of-Way